

**FOR SUBLEASE**

# 4650 LAKE FOREST

BLUE ASH, OH 45242



**DISTRIBUTION SPACE**

**FOR SUBLEASE**



## PROPERTY HIGHLIGHTS

- Suite 400:
  - » 33,711 SF
  - » 2,800 SF Office
  - » (4) Dock Doors w/ Mechanical pit levelers
- Rail Served
- 20 Minutes to Downtown Cincinnati
- Nearby Amenities include Hotels, Restaurants & Retail
- Zoning is M-1
- Just minutes to I-71 and I-275

For more information, contact:

**Seattle Stein**  
Director  
+1 513 763 3027  
seattle.stein@cushwake.com

**Jeffrey R. Bender, SIOR, CCIM**  
Executive Vice Chair  
+1 513 763 3046  
jeff.bender@cushwake.com

201 E. Fourth Street, Suite 1800  
Cincinnati, OH 45202  
P: +1 513 421 4884  
cushmanwakefield.com

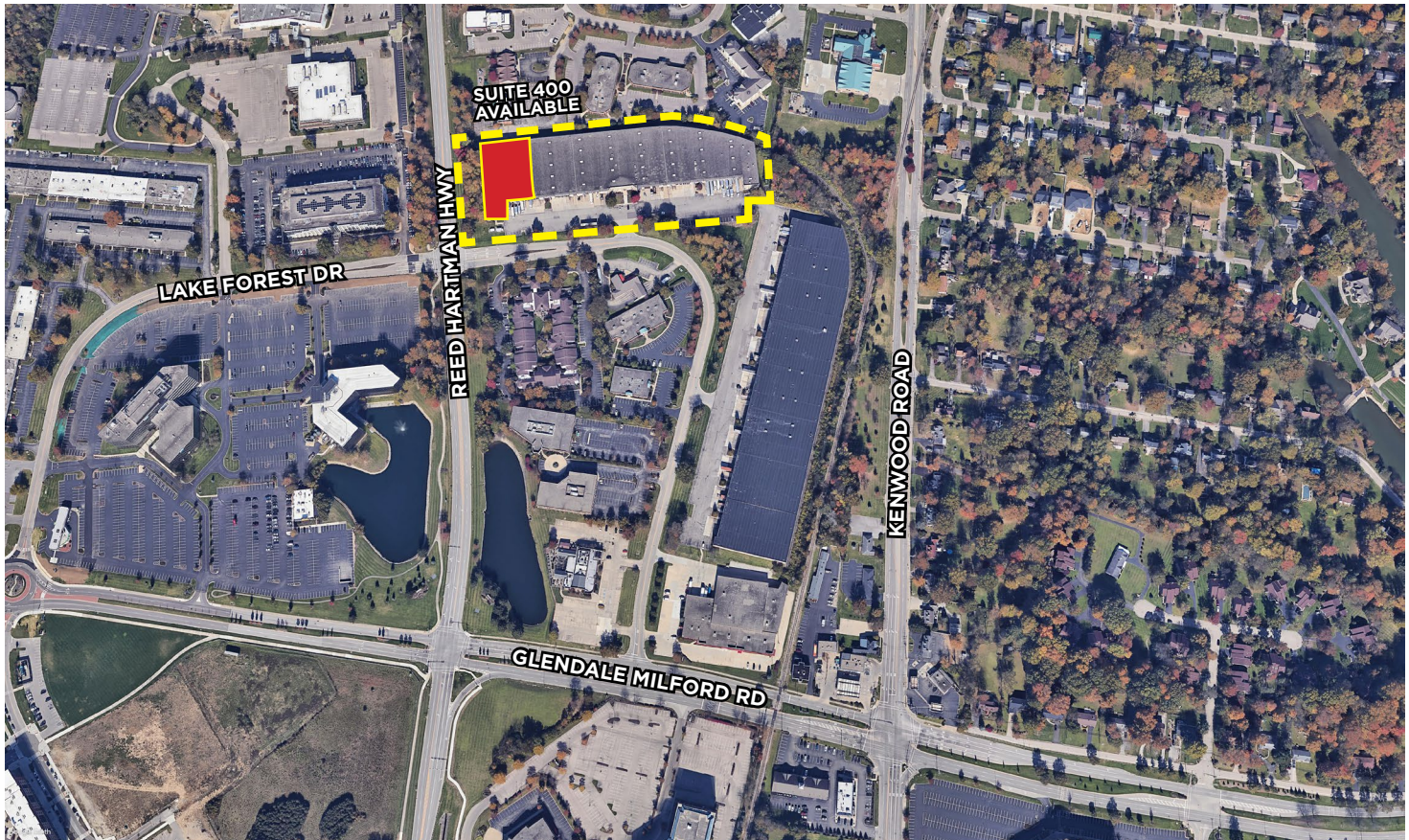
FOR SUBLEASE

# 4650 LAKE FOREST

BLUE ASH, OH 45242

## BUILDING SPECIFICATIONS

LOCATION	Blue Ash, OH (Hamilton County)	FIRE SUPPRESSION	Wet System
BUILDING SIZE	177,436 SF	LIGHTING	LED's with motion sensors
AVAILABLE SIZE	33,711 SF	TRUCK DOORS	(4) Docks with levelers
OFFICE SIZE	2,800 SF	TRUCK COURT	70' Asphalt
YEAR BUILT	1981	ELECTRIC	400 amp, 120/208 volt, 3 phase
CONSTRUCTION	Concrete Block/Metal	HVAC	Gas Forced Unit Heaters
CLEAR HEIGHT	23' - 26'	ELECTRIC/GAS	<a href="http://www.duke-energy.com">www.duke-energy.com</a>
COLUMN SPACING	40' x 50'	WATER/SEWER	<a href="http://www.cincinnati-oh.gov/water">www.cincinnati-oh.gov/water</a>
ROOF	Standing Seam Metal Panel	TELEPHONE	<a href="http://www.altafiber.com">www.altafiber.com</a>
PARKING	Shared Parking	DATA	<a href="http://www.spectrum.com">www.spectrum.com</a>

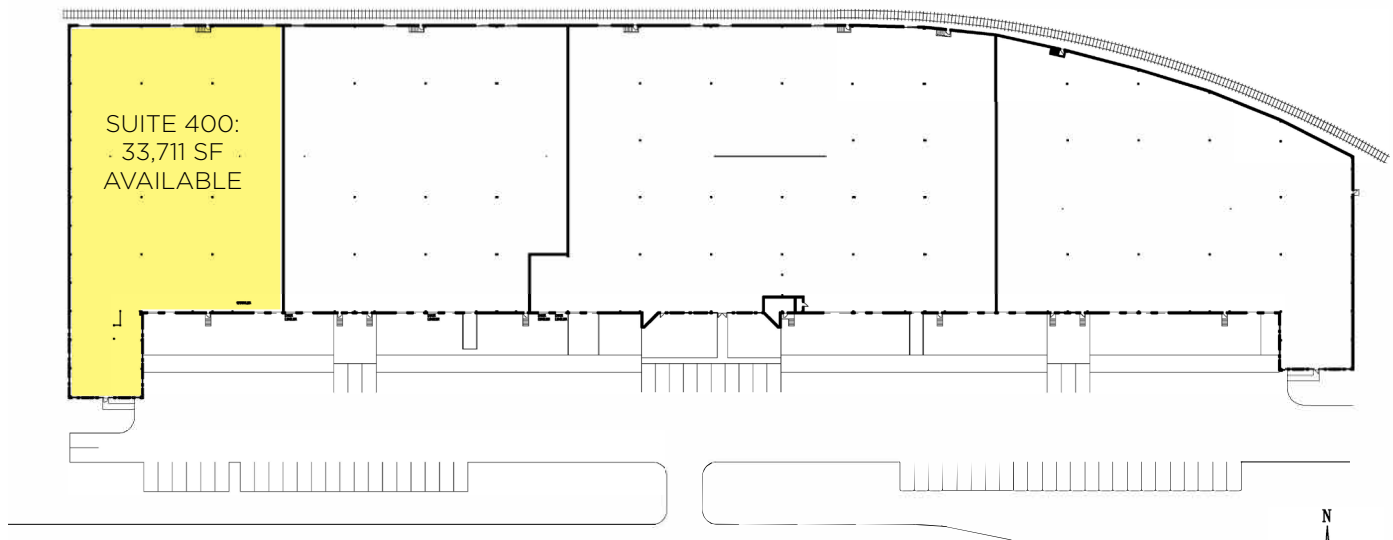


FOR SUBLEASE

# 4650 LAKE FOREST

BLUE ASH, OH 45242

## FLOOR PLAN

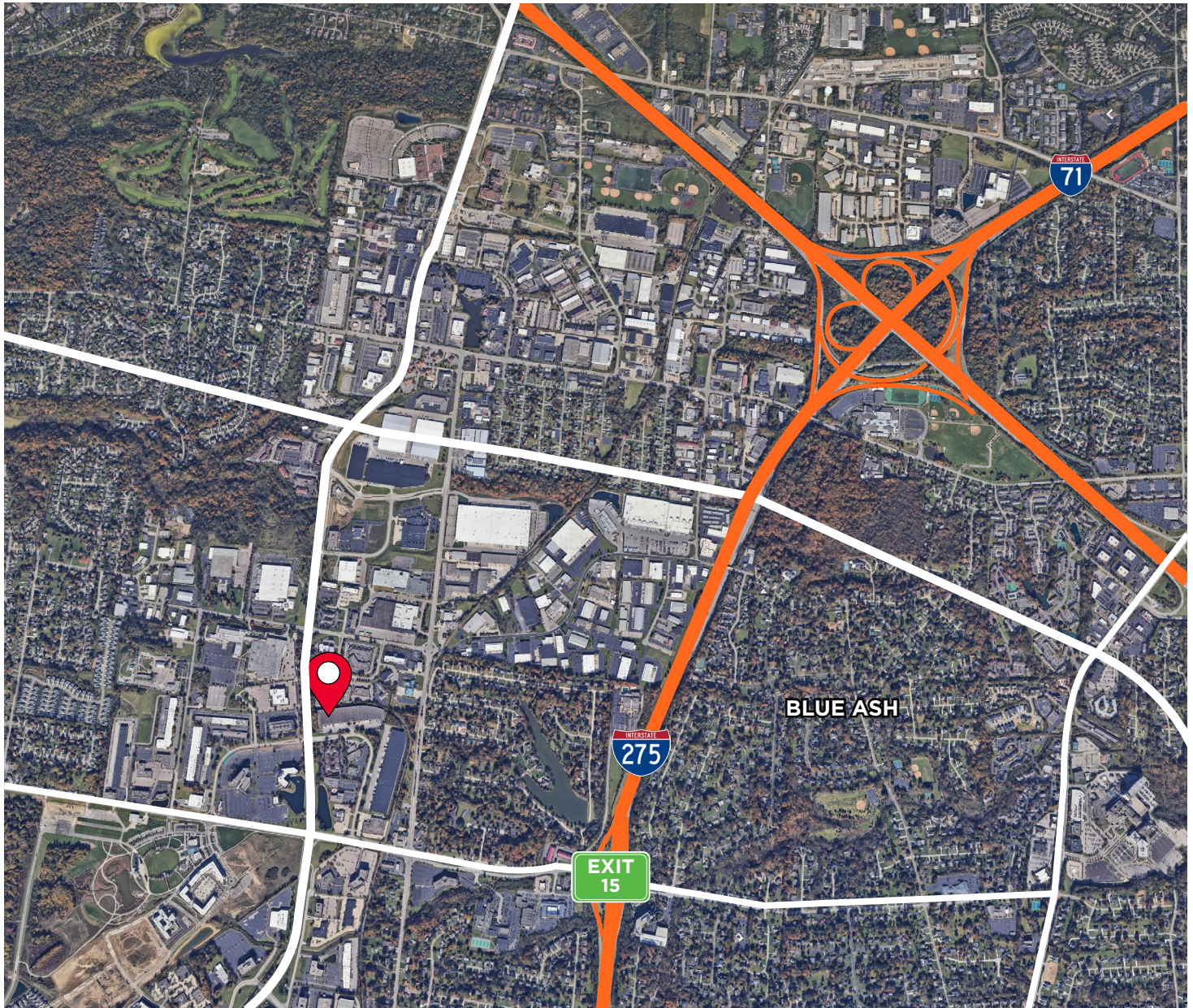


FOR SUBLEASE

# 4650 LAKE FOREST

BLUE ASH, OH 45242

## AERIAL LOCATION



For more information, contact:

**Seattle Stein**

Director

+1 513 763 3027

[seattle.stein@cushwake.com](mailto:seattle.stein@cushwake.com)

**Jeffrey R. Bender, SIOR, CCIM**

Executive Vice Chair

+1 513 763 3046

[jeff.bender@cushwake.com](mailto:jeff.bender@cushwake.com)

201 E. Fourth Street, Suite 1800

Cincinnati, OH 45202

P: +1 513 421 4884

[cushmanwakefield.com](http://cushmanwakefield.com)

©2022 Cushman & Wakefield. All rights reserved. The information contained in this communication is strictly confidential. This information has been obtained from sources believed to be reliable but has not been verified. NO WARRANTY OR REPRESENTATION, EXPRESS OR IMPLIED, IS MADE AS TO THE CONDITION OF THE PROPERTY (OR PROPERTIES) REFERENCED HEREIN OR AS TO THE ACCURACY OR COMPLETENESS OF THE INFORMATION CONTAINED HEREIN, AND SAME IS SUBMITTED SUBJECT TO ERRORS, OMISSIONS, CHANGE OF PRICE, RENTAL OR OTHER CONDITIONS, WITHDRAWAL WITHOUT NOTICE, AND TO ANY SPECIAL LISTING CONDITIONS IMPOSED BY THE PROPERTY OWNER(S). ANY PROJECTIONS, OPINIONS OR ESTIMATES ARE SUBJECT TO UNCERTAINTY AND DO NOT SIGNIFY CURRENT OR FUTURE PROPERTY PERFORMANCE.