

AVAILABLE FOR SALE OR LEASE

67 PUBLIC 69 SQUARE WILKES BARRE, PA

13MW INTERCONNECTION
/ DATA CENTER OPPORTUNITY

AVISON
YOUNG



BUILDING SPECS

BUILDING SPECIFICATIONS

- 15-story building
- Total space: 100,000 sq ft
- 13 mega watts of available power
- Diverse fiber POEs

USABLE SPACE

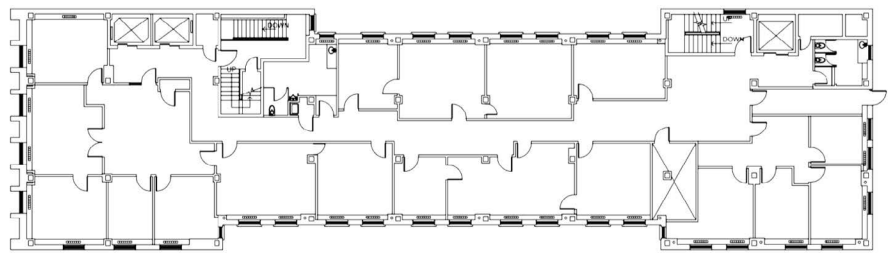
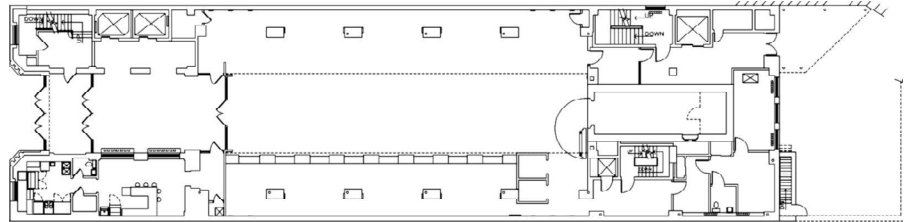
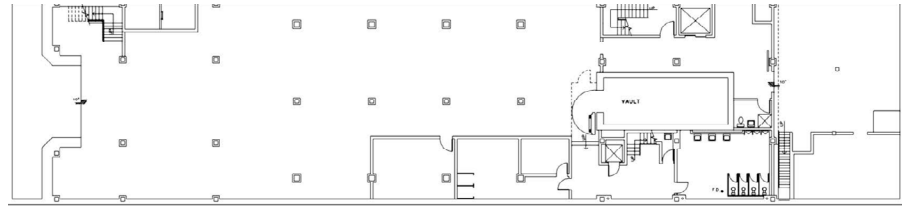
- 6,200 sq ft per floor
- Applicable to floors 5-14
- Basement is 7,500 sq ft
- Back lot of 13,000 sq ft supports generators, cooling towers etc

STRUCTURAL LOAD CAPACITY

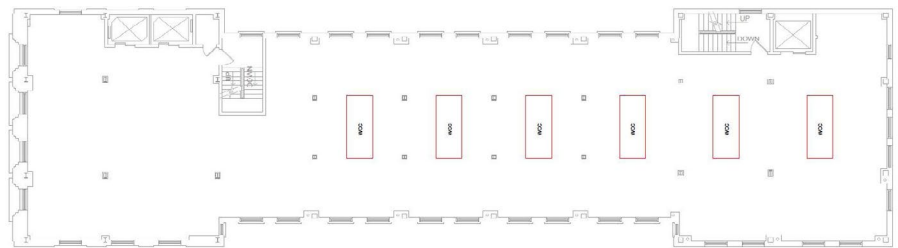
- 310,000 lbs per floor
- Minor upgrades identified



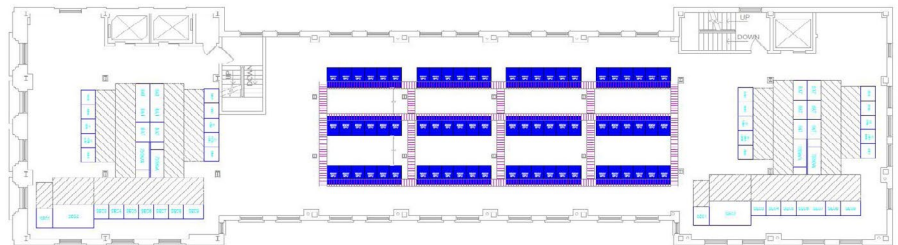
AS BUILT FLOOR PLANS



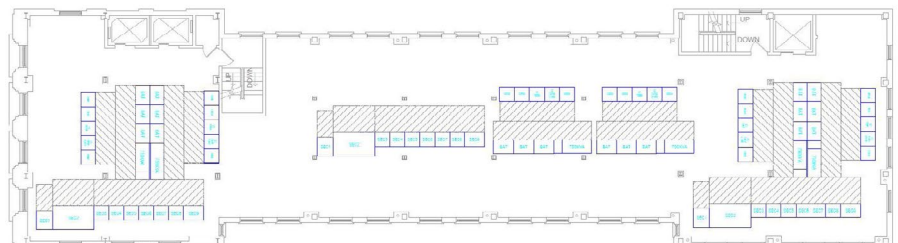
TEST FIT FLOOR PLANS



Typical Cooling Floor
Scale: 1/8" = 1'-0"



Typical Data Center Floor
Scale: 1/8" = 1'-0"



Typical Infrastructure Floor
Scale: 1/8" = 1'-0"



FOR MORE INFORMATION, PLEASE CONTACT:

BRENDAN KELLEY

Principal

215.820.3828

brendan.kelley@avisonyoung.com

JONATHAN VACCA

Vice President

617.575.2829

jonathan.vacca@avisonyoung.com

CHRIS WINNICK

Associate

610.715.8085

chris.winnick@avisonyoung.com