

RED ROCK PLAZA | FOUNTAIN HILLS, AZ 85268

1,464 - 3,473 SF AVAILABLE FOR LEASE

Leasing Incentive -

For any qualified tenants on a 36-month Lease Term, the landlord will offer the Base Rent Incentive.

- Year 1 - \$13.00/NNN
- Year 2 - \$14.00/NNN
- Year 3 - \$15.00/NNN



LEASE RATE:

\$13.00 PSF/NNN WITH INCENTIVES

16425 E. PALISADES BLVD.

FOUNTAIN HILLS, ARIZONA 85268

Matt Harper, CCIM

Senior Vice President

623.692.9435

matt@citywidecre.com

Leah Motsinger

Senior Associate

602.423.3619

leah@citywidecre.com

2122 East Highland Avenue, Suite 225

Phoenix, Arizona 85016

602.313.1000 • citywidecre.com

citywide
COMMERCIAL REAL ESTATE

PROPERTY DETAILS

\$13.00 PSF + NNN (With Incentives)

End-Cap Available

Second Generation Cafe

Anchored by Anytime Fitness

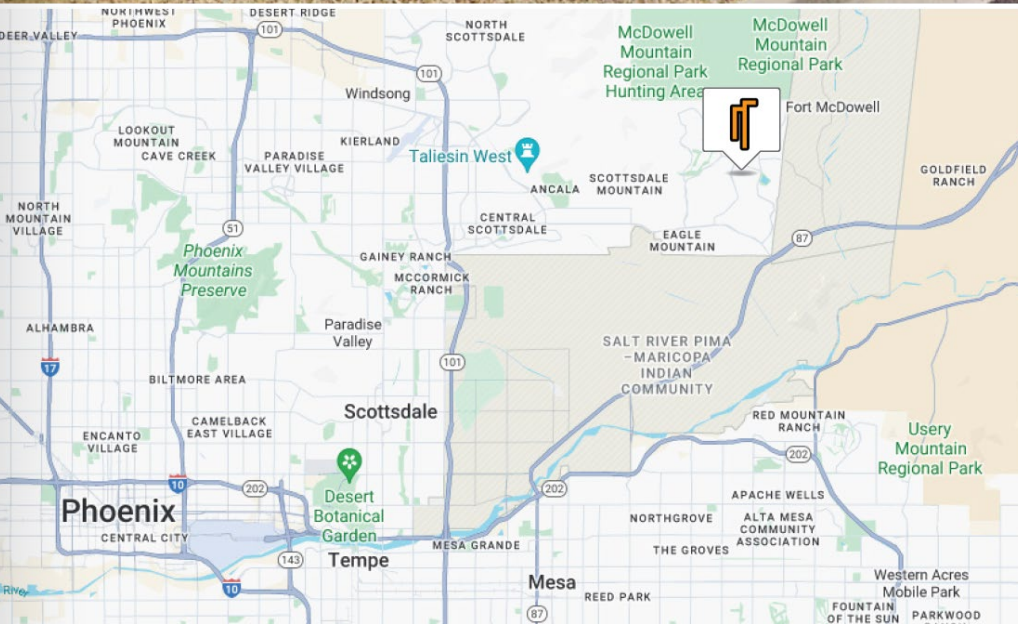
Ample Parking

Monument Signage

Affordable Rates

Easy Access to Beeline Highway

Located in the Heart of Fountain Hills



DEMOGRAPHICS	1 MILE	3 MILE	5 MILES
AVERAGE AGE:	60.5	60.0	58.2
POPULATION:	9,457	11,966	31,696
AVERAGE HH INCOME:	\$112,465	\$146,236	\$165,379
YEAR BUILT	1998		
ZONING	C-2		
APN	176-24-563		

Matt Harper, CCIM

Senior Vice President
623.692.9435
matt@citywidecre.com

Leah Motsinger

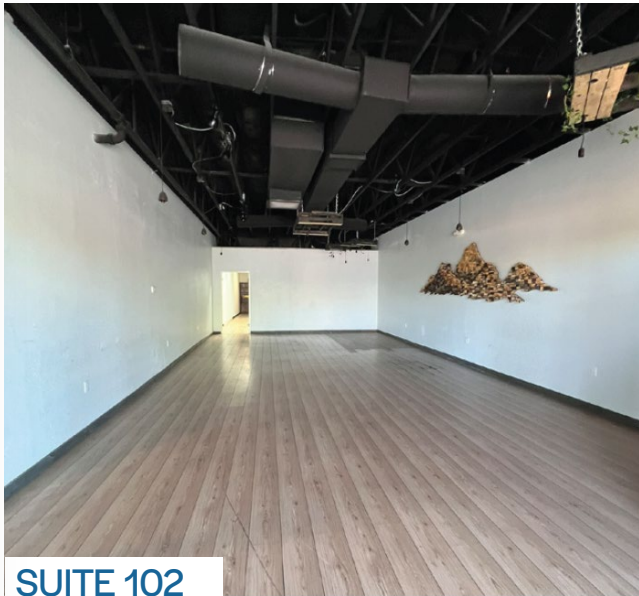
Senior Associate
602.423.3619
leah@citywidecre.com

All information furnished is from sources deemed reliable. No representation is made as to the accuracy thereof and it is submitted subject to errors, omissions, changes, or withdrawal without notice and to any special listings conditions, including the rate and manner of payment of commissions for particular offerings imposed by principals or agreed to by the company, the terms of which are available to interested principals or brokers. All dimensions are approximate. Owner and/or Broker make no representations expressed or implied as to the accuracy of floor plan/site plan dimensions.

PROPERTY PHOTOS

RED ROCK PLAZA | FOR LEASE

1,464 - 3,473 SF AVAILABLE



SUITE 102



SUITE 107



All information furnished is from sources deemed reliable. No representation is made as to the accuracy thereof and it is submitted subject to errors, omissions, changes, or withdrawal without notice and to any special listings conditions, including the rate and manner of payment of commissions for particular offerings imposed by principals or agreed to by the company, the terms of which are available to interested principals or brokers. All dimensions are approximate. Owner and/or Broker make no representations expressed or implied as to the accuracy of floor plan/site plan dimensions.

PROPERTY PHOTOS

SUITE 105



SUITE 103



All information furnished is from sources deemed reliable. No representation is made as to the accuracy thereof and it is submitted subject to errors, omissions, changes, or withdrawal without notice and to any special listings conditions, including the rate and manner of payment of commissions for particular offerings imposed by principals or agreed to by the company, the terms of which are available to interested principals or brokers. All dimensions are approximate. Owner and/or Broker make no representations expressed or implied as to the accuracy of floor plan/site plan dimensions.

SITE PLAN

RED ROCK PLAZA | FOR LEASE

1,464 - 3,473 SF AVAILABLE



All information furnished is from sources deemed reliable. No representation is made as to the accuracy thereof and it is submitted subject to errors, omissions, changes, or withdrawal without notice and to any special listings conditions, including the rate and manner of payment of commissions for particular offerings imposed by principals or agreed to by the company, the terms of which are available to interested principals or brokers. All dimensions are approximate. Owner and/or Broker make no representations expressed or implied as to the accuracy of floor plan/site plan dimensions.

AREA MAP

RED ROCK PLAZA | FOR LEASE

1,464 - 3,473 SF AVAILABLE



-
-
-
-
-
-

-
-
-
-
-
-

SUBJECT

- Hill Cleaning Service
- AZ Stone & Crystal
- Wise Agent
- Emerson Art School
- Bachelor's Pad BBQ
- Leslie's Pool
- Cox Retailer
- Palisades Veterinary

- Tidy Guys Cleaning
- Sun Baked Food
- Parkview Tap House
- Calvary Chapel
- Le Baron Dry Cleaner
- Atwood Insurance
- Phil's Filling Station

- John's Tailor Shop
- Que Bueno Mexican
- Russo Salon & Spa
- El Dorado Animal Hospital
- Sami Fine Jewelry

- American legion
- Alexander's Greek
- All American Grill
- Fine Art & Wine
- Sofritas

Matt Harper, CCIM
 Senior Vice President
 623.692.9435
 matt@citywidecre.com

Leah Motsinger
 Senior Associate
 602.423.3619
 leah@citywidecre.com

Fountain Hills

All information furnished is from sources deemed reliable. No representation is made as to the accuracy thereof and it is submitted subject to errors, omissions, changes, or withdrawal without notice and to any special listings conditions, including the rate and manner of payment of commissions for particular offerings imposed by principals or agreed to by the company, the terms of which are available to interested principals or brokers. All dimensions are approximate. Owner and/or Broker make no representations expressed or implied as to the accuracy of floor plan/site plan dimensions.

