

Davie Park of Commerce

SW 70th Avenue, Davie, Florida



Facility Overview

Located in Davie with close proximity to 1-595, 1-75 and the Florida Turnpike, Davie Park of Commerce is a great choice!

- Total Park Area: 187,012 SF
- Dock and grade level loading
- Multi tenant park
- Small bays
- Private Restroom

For more information, or to schedule a tour, please contact:

Dominick Ficarra

(954) 321-6464 Ofc OR (954) 478-3918 Cell

dominickf@montalbanorealty.com



Davie Park of Commerce

Current Availabilities

2230 SW 70th Avenue, Suite 3

2,700 SF 300 SF Office/2,400 SF Warehouse

Dock and Grade level doors; 18' clear; one restroom

2240 SW 70th Avenue, Suite J:

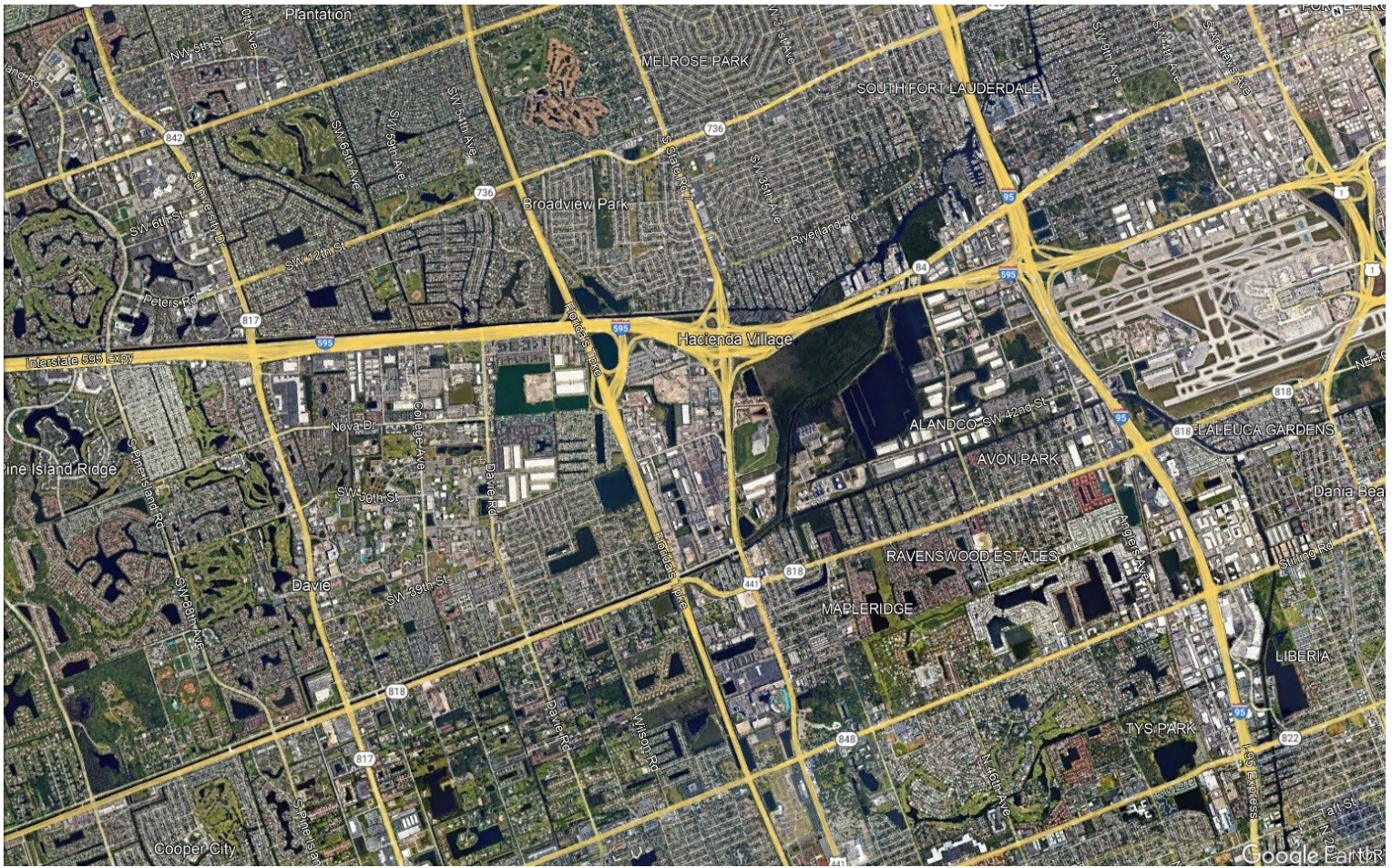
2,000 SF 50 SF Office/1,500 SF Warehouse

Grade level door; one restroom.

6851 SW 21st Court, Suite 13

2,046 SF 670 SF Office/1,736 SF Warehouse

Grade level door; one restroom



For more information, or to schedule a tour, please contact:

Dominick Ficarra

(954) 321-6464 Office OR (954) 478-3918 Cell

dominickf@montalbanorealty.com

