



SCALE YOUR BUSINESS AT STETSON INDUSTRIAL

2337 Doreen Street, Grand Prairie, Texas

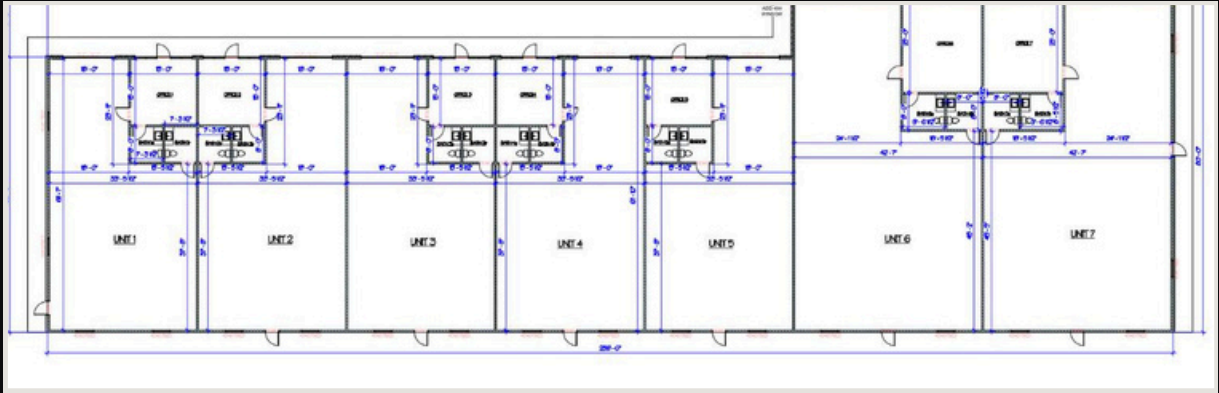


Industrial, Commercial, Office & Flex Spaces

- (5 units) 2,058 SF
- (2 units) 3,431 SF
- Located 5 minutes from Highway 180, 360, I-30 & Bush 161
- 18 ft ceilings
- Floor grade garage door for easy access.
- NNN terms
- FIRST MONTH FREE, if signed in 2025!

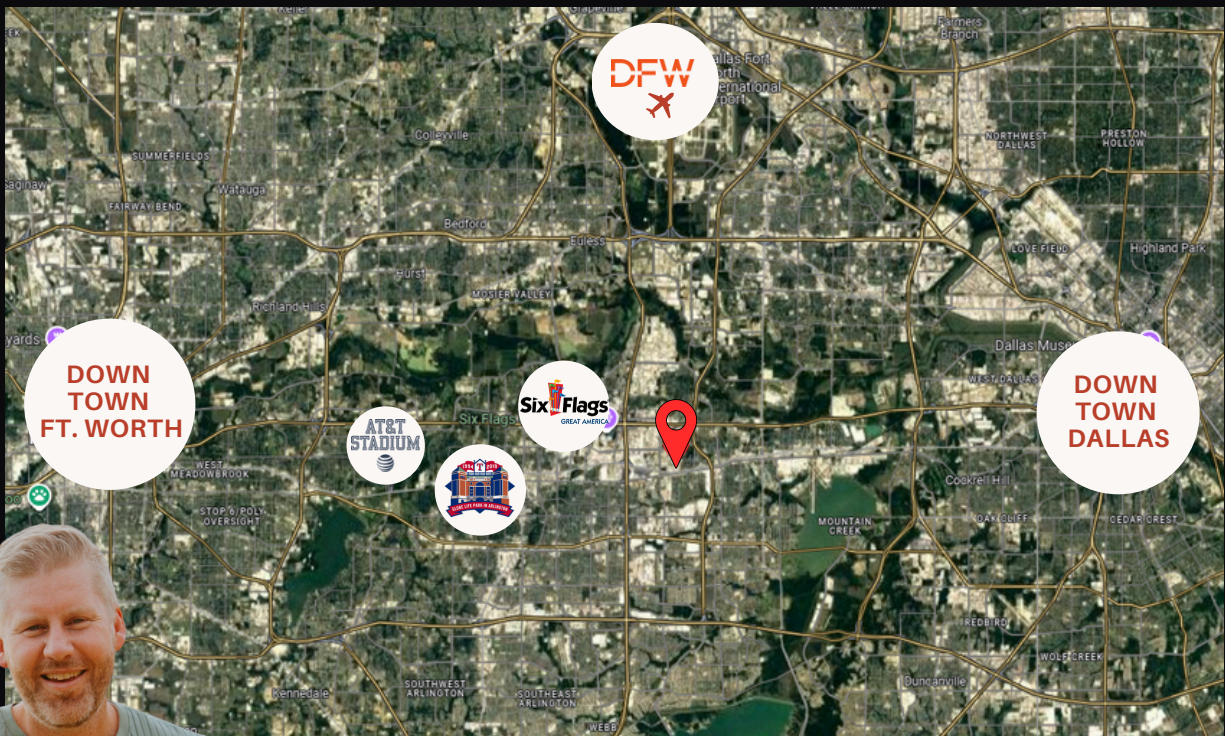
STETSONFLEXPARK.COM | RYAN CLARK, 435-512-9771

FLOORPLANS



- All spaces include heating/AC systems.
- R30 insulation in the ceilings and R26 insulation in the walls.
- Each unit includes one office and bathroom. Additional office can be added via tenant improvement.
- Leases signed in 2025 will have the option to select design specs.

PRIME LOCATION BETWEEN DFW & FT. WORTH



RYAN CLARK

ryan@kairosrealestate.com

435-512-9771

