

138 EAST 50TH STREET

BETWEEN LEXINGTON & THIRD AVENUES | MIDTOWN EAST



RESTAURANT OPPORTUNITY



138 EAST 50TH STREET

SPACE DETAILS

SIZE Ground Floor: 4,175 SF
Mezzanine: 1,200 SF
Selling Lower: 3,500 SF

FRONTAGE 41'

CEILING HEIGHT Ground: 21'-36'
Selling Lower: 11'

POSSESSION Immediate

PROPERTY HIGHLIGHTS

- Fully vented with gas
- Dedicated elevator servicing the ground and lower level
- Service entrance for deliveries and garbage removal with direct access to lower level
- Situated at the base of The Centrale, a 124 unit luxury condo building
- Surrounded by a mix of dense residential, commercial, and hotels
- Steps from the 6, E, and M trains, which see over 12 million riders annually

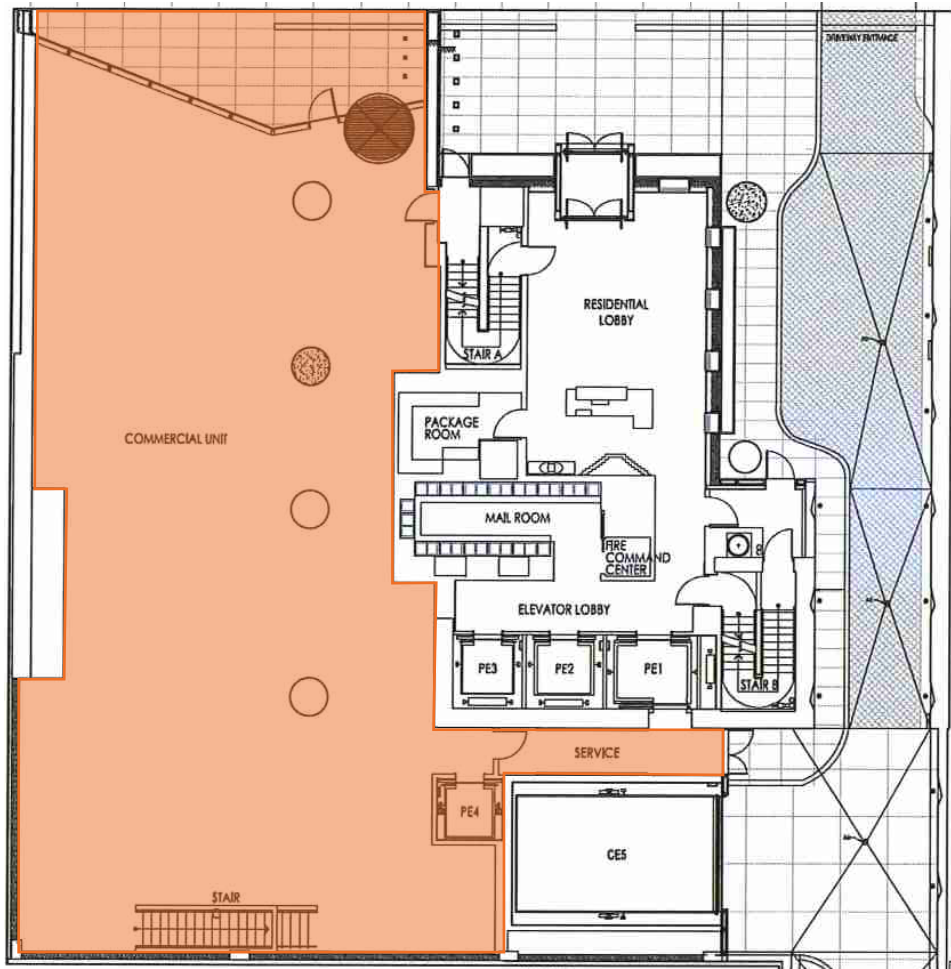
NEIGHBORING TENANTS



138 EAST 50TH STREET

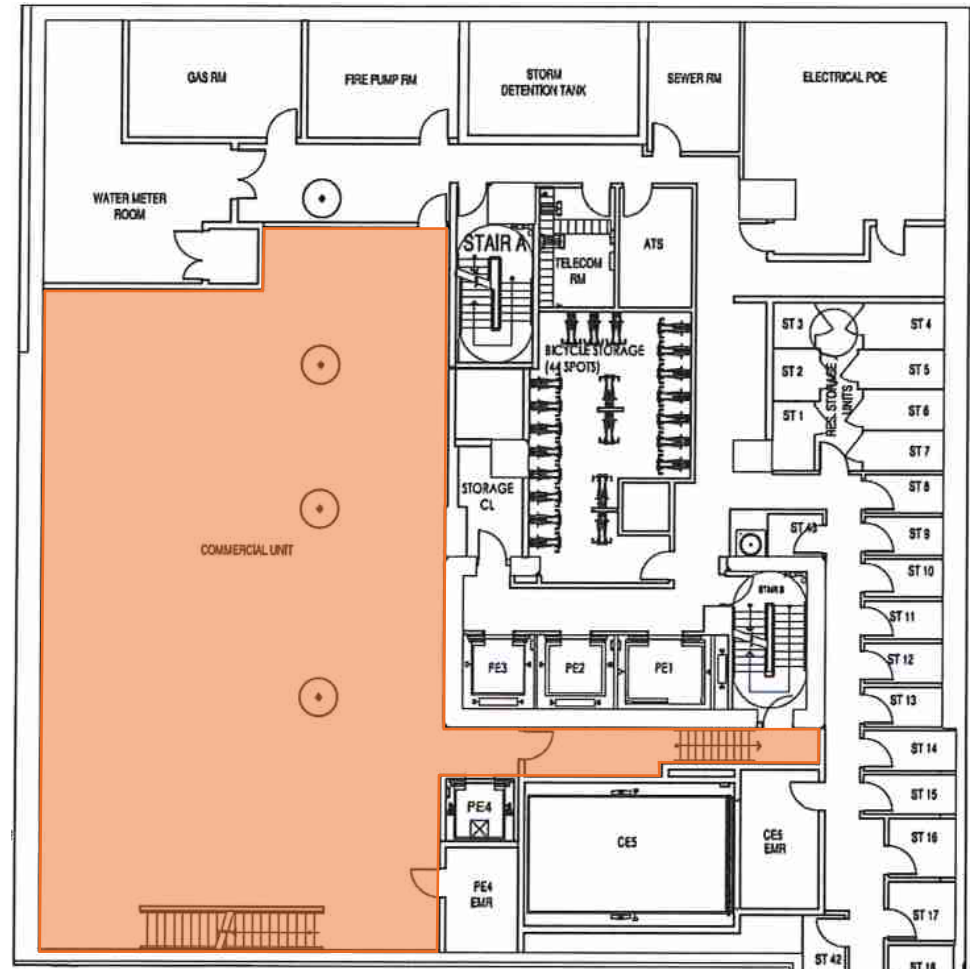
GROUND FLOOR - 4,175 SF

50TH STREET



SELLING LOWER LEVEL - 3,500 SF

50TH STREET



138 EAST 50TH STREET

BETWEEN LEXINGTON & THIRD AVENUES | MIDTOWN EAST

FOR MORE INFORMATION,
PLEASE CONTACT:

ZACH NATHAN

240.731.8333 | ZNathan@ksrny.com

MAYER GHONOJA

212.548.3945 | MG@ksrny.com

