



For Lease

Professional Office Space

Doug Martin
Vice President
+1 603 493 8784
doug.martin@colliers.com



175 Canal Street, Suite 401
Manchester, NH 03101
+1 603 623 0100
colliersnh.com

848 Elm Street Manchester, NH

Property Highlights

- 2,000± to 7,198± SF of office space available for lease in a well-maintained and professionally managed building situated in the heart of vibrant downtown Manchester
- Flexible floor plans allow single users or growing teams; ideal for legal, financial, tech, or creative users
- Excellent visibility and branding presence on Manchester's main corridor within walking distance to a variety of shops, restaurants, businesses, hotels, municipal buildings, and court houses
- Public parking on-street and in nearby parking garages
- Neighbors include The Palace Theatre, The Hanover Street Chop House, Citizens Bank, Manchester Chamber of Commerce, SNHU Arena, The DoubleTree by Hilton Convention Center, and more

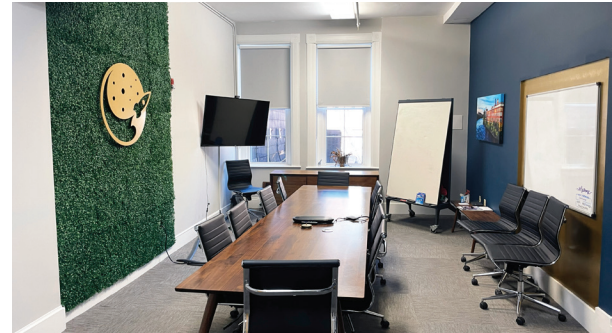
Information herein has been obtained from sources deemed reliable, however its accuracy cannot be guaranteed by Colliers International | New Hampshire & Maine. The user is required to conduct their own due diligence and verification. Colliers International | New Hampshire & Maine is independently owned and operated.

For Lease



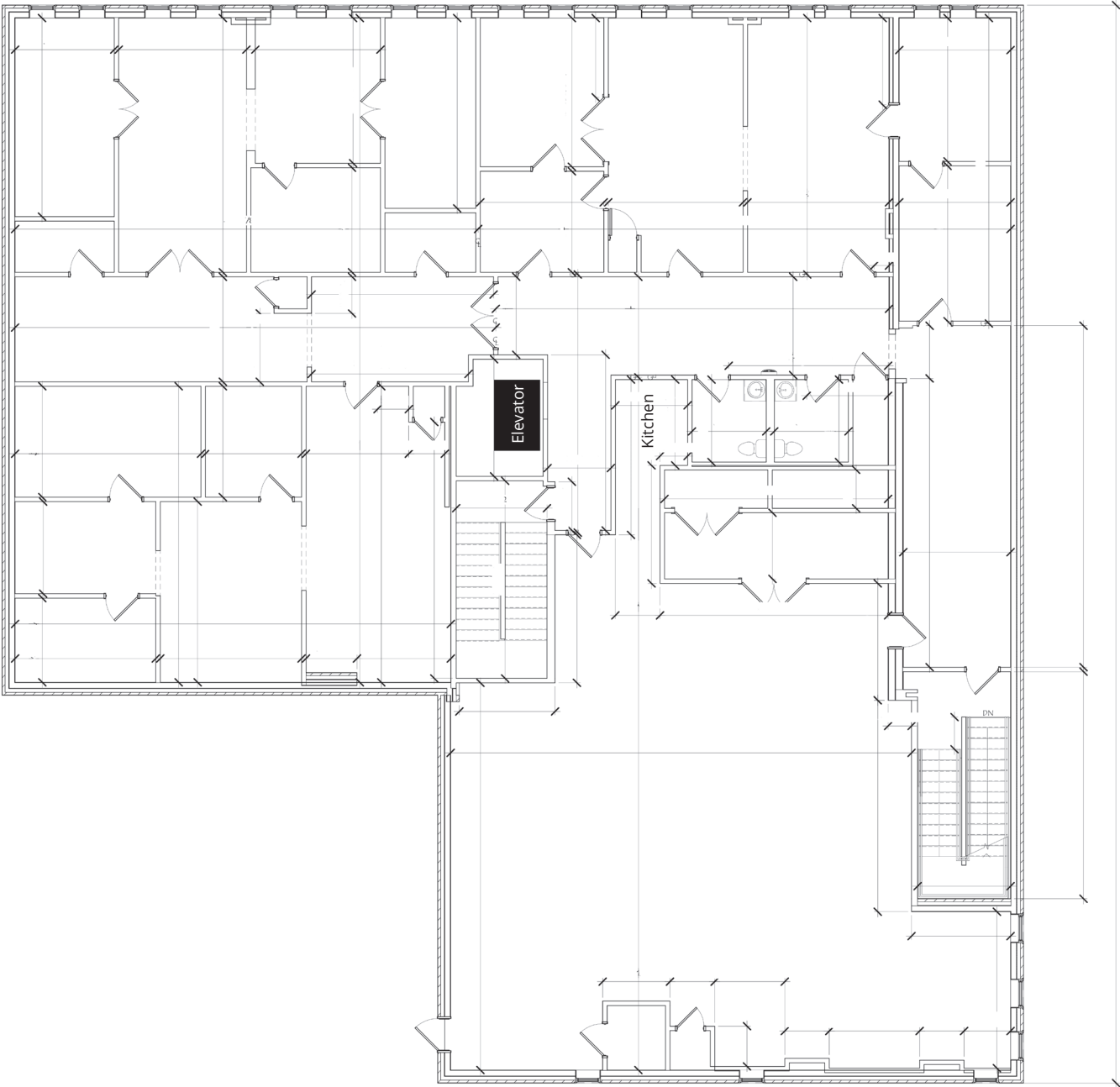
Specifications

Address:	848 Elm Street
Location:	Manchester, NH 03101
Building Type:	Mixed-use
Year Built:	1890
Year Renovated:	2025
Total Building SF:	23,976±
Available SF:	2,000± to 7,198±
Floors:	3
Elevator:	Yes
Utilities:	Municipal water & sewer Natural gas
Zoning:	Central Business District
Accessibility:	Easy access to Exit 5, I-293, and just 10 minutes from Manchester-Boston Regional Airport
Lease Rate:	\$15.00 to \$16.95 modified gross



Colliers | 175 Canal Street, Suite 401, Manchester, NH 03101
+1 603 623 0100 | colliersnh.com

2nd Floor Plan



Title:
EXISTING SECOND
FLOOR PLAN

AE1.02

Scale: 3/16" = 1'-0"
Drawn By: CJP/MAB
Checked By: ALW
Project No.: 2019007
Date: 05/15/19

Revisions:		
#	Description	Date

844 ELM STREET

844 ELM STREET
MANCHESTER, NH 03101

**MARKET
SQUARE**

ARCHITECTS
104 Congress St., STE 203
Portsmouth, NH 03801
PH: 603.501.0202