

FOR LEASE

OFFICE BUILDING

100 South 500 West | Bountiful, Utah 84010



Property Highlights

- 1,350 SF (Suite 210)
- Lease Rate: \$22 PSF Full Service
- Tenant Improvements Negotiable
- Pylon Signage Available
- Cleaning is for common areas only. Tenant would be responsible for cleaning their space.

ARTIE LUCERO
801.608.4909
alucero@legendcommercial.com

TAYLOR RIECK
801.897.5731
trieck@legendcommercial.com

801.930.6750
www.legendcommercial.com
2180 S 1300 E, Suite 240 | Salt Lake City, UT 84106

PARTNER **XTEAM**
RETAIL ADVISORS



OFFICE BUILDING

100 South 500 West | Bountiful, Utah 84010

DEMOGRAPHICS

	1 MILE	3 MILE	5 MILE
2025 POPULATION	12,073	77,582	105,787
2030 PROJECTED POPULATION	11,930	76,329	105,841
2025 HOUSEHOLDS	4,825	27,199	36,543
2025 AVG HH INCOME	\$109,741	\$135,416	\$143,573
2025 BUSINESSES	1,016	3,576	4,530
2025 DAYTIME POPULATION	9,066	29,965	40,283



ARTIE LUCERO
801.608.4909
 alucero@legendcommercial.com

TAYLOR RIECK
801.897.5731
 trieck@legendcommercial.com

801.930.6750
www.legendcommercial.com
 2180 S 1300 E, Suite 240 | Salt Lake City, UT 84106

PARTNER **XTEAM**
 RETAIL ADVISORS



OFFICE BUILDING

100 South 500 West | Bountiful, Utah 84010



ARTIE LUCERO
801.608.4909
alucero@legendcommercial.com

TAYLOR RIECK
801.897.5731
trieck@legendcommercial.com

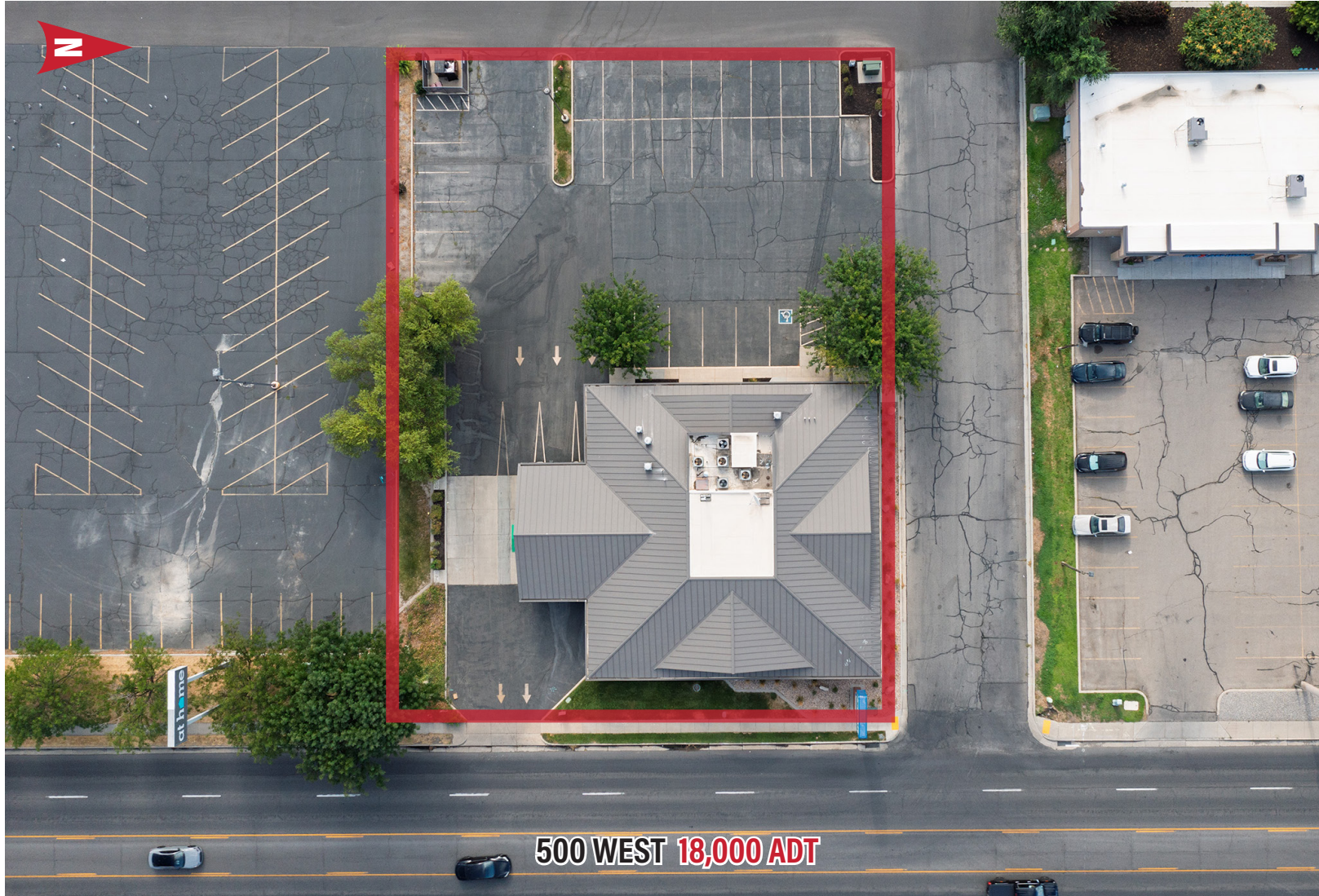
801.930.6750
www.legendcommercial.com
2180 S 1300 E, Suite 240 | Salt Lake City, UT 84106

PARTNER **XTEAM**
RETAIL ADVISORS



OFFICE BUILDING

100 South 500 West | Bountiful, Utah 84010



ARTIE LUCERO
801.608.4909
alucero@legendcommercial.com

TAYLOR RIECK
801.897.5731
trieck@legendcommercial.com

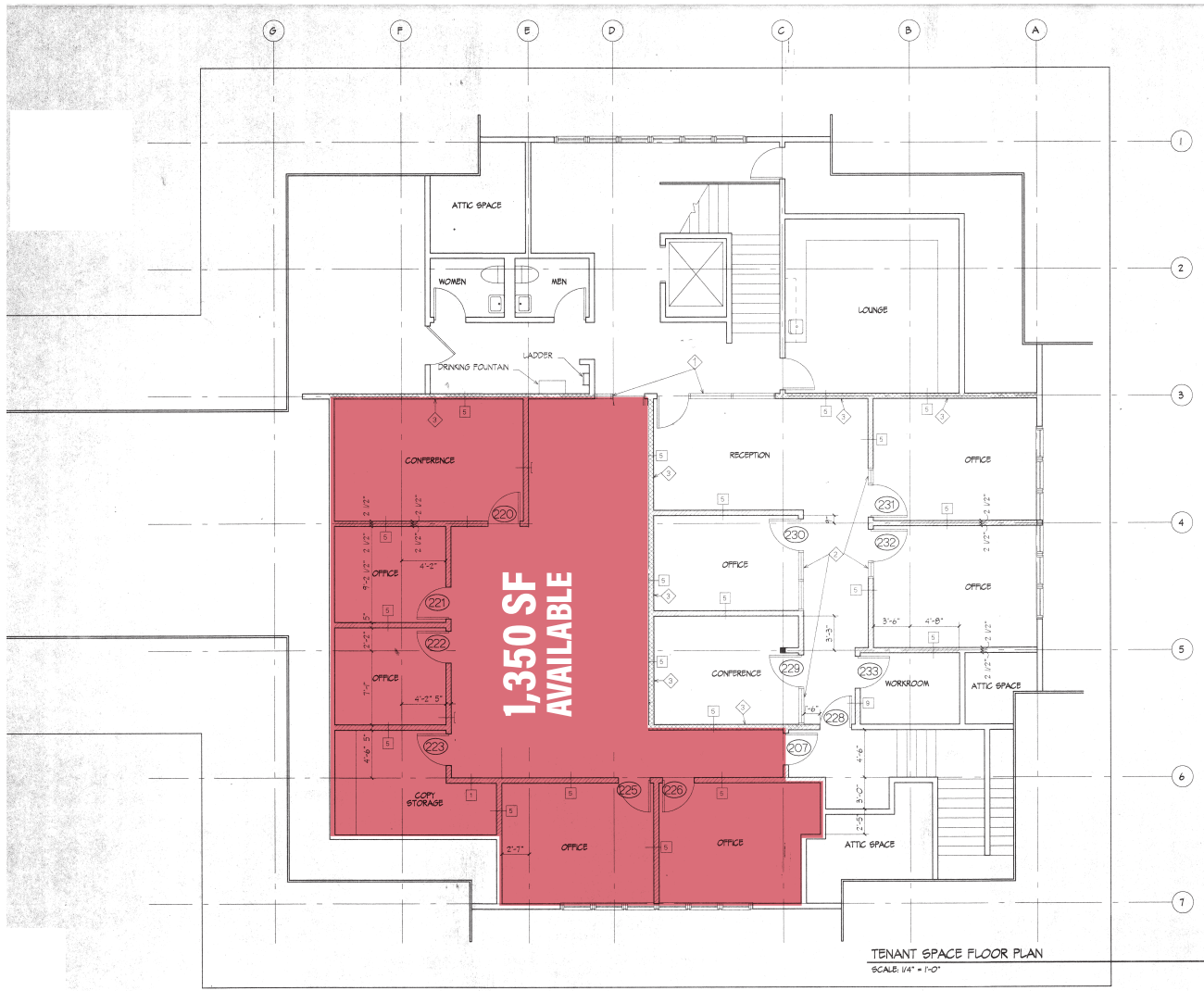
801.930.6750
www.legendcommercial.com
2180 S 1300 E, Suite 240 | Salt Lake City, UT 84106

PARTNER **XTEAM**
RETAIL ADVISORS



OFFICE BUILDING

100 South 500 West | Bountiful, Utah 84010



ARTIE LUCERO
801.608.4909
alucero@legendcommercial.com

TAYLOR RIECK
801.897.5731
trieck@legendcommercial.com

801.930.6750
www.legendcommercial.com
2180 S 1300 E, Suite 240 | Salt Lake City, UT 84106

