



OFFICE FOR LEASE

241A S. SAN MATEO DRIVE
SAN MATEO, CA 94401



- Prime downtown office space
- 3,045 Rentable SF at \$2.00/SF/Modified Gross
- Open floor plan
- Four private offices
- Located on the 2nd floor
- Full Kitchen
- **AVAILABLE NOW!**

ANNE WILBUR
BROKER AND PARTNER

DRE# 00823559

415.559.5557

a@wilburproperties.com

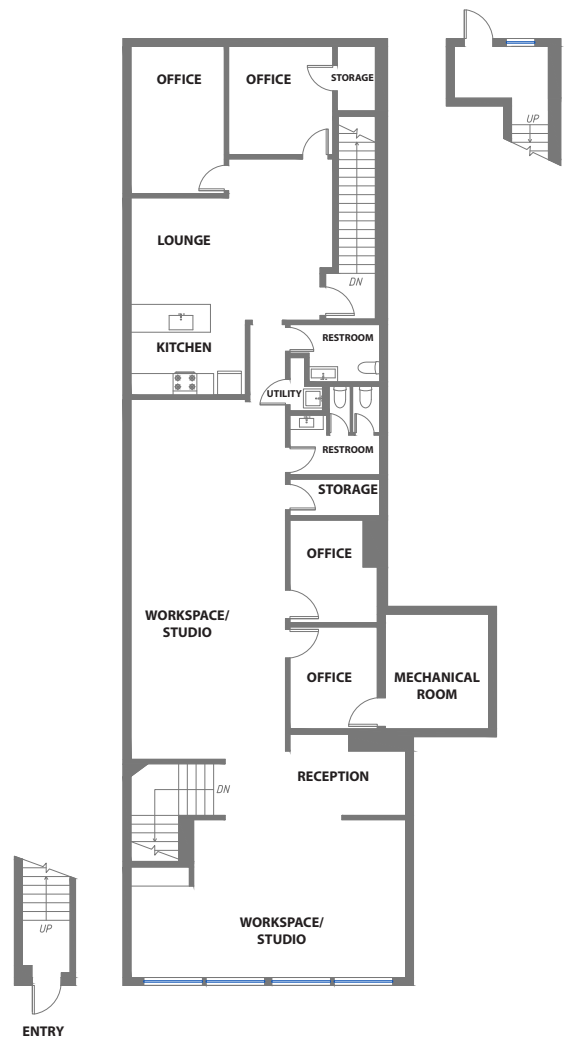


OFFICE FOR LEASE

241A S. SAN MATEO DRIVE
SAN MATEO, CA 94401



FLOOR PLAN



Rendering by Open Homes Photography. All measurements area approximate while deemed reliable, no information on these floor plans should be relied upon without independent verification.

ANNE WILBUR

BROKER AND PARTNER

DRE# 00823559

415.559.5557

a@wilburproperties.com



OFFICE FOR LEASE

241A S. SAN MATEO DRIVE
SAN MATEO, CA 94401



Located in central downtown San Mateo at the corner of San Mateo Drive and E. 3rd Avenue.

Conveniently located 5 blocks from the San Mateo CalTrain Station. Easy access to highways 101, 92, and El Camino Real.

Ample restaurant and eatery choices within walking distance.

ANNE WILBUR

BROKER AND PARTNER

DRE# 00823559

415.559.5557

a@wilburproperties.com