



CBRE

ZILKA-KOTAB

± 30,720 RSF Commercial Building

1155 North First St
San Jose, CA

±900 - ±21,266 RSF Office for Lease



Property Highlights

- ▷ North First Street Frontage
- ▷ Freeway Visible
- ▷ Potential Building Signage
- ▷ Elevator Served
- ▷ Well-Maintained Building
- ▷ Nearby Amenities
- ▷ CP Zoned-Medical and General Office Among Permitted Uses

Suite 100	2,000 SF	Now
Suite 105*	5,354 SF	Now
Suite 106A	190 SF	Now
Suite 109*	900 SF	Now
Suite 111	935 SF	Now
Suite 201**	3,540 SF	Now
Suite 210	1,532 SF	Now
Suite 214**	2,756 SF	Now
Suite 218	3,360 SF	Now

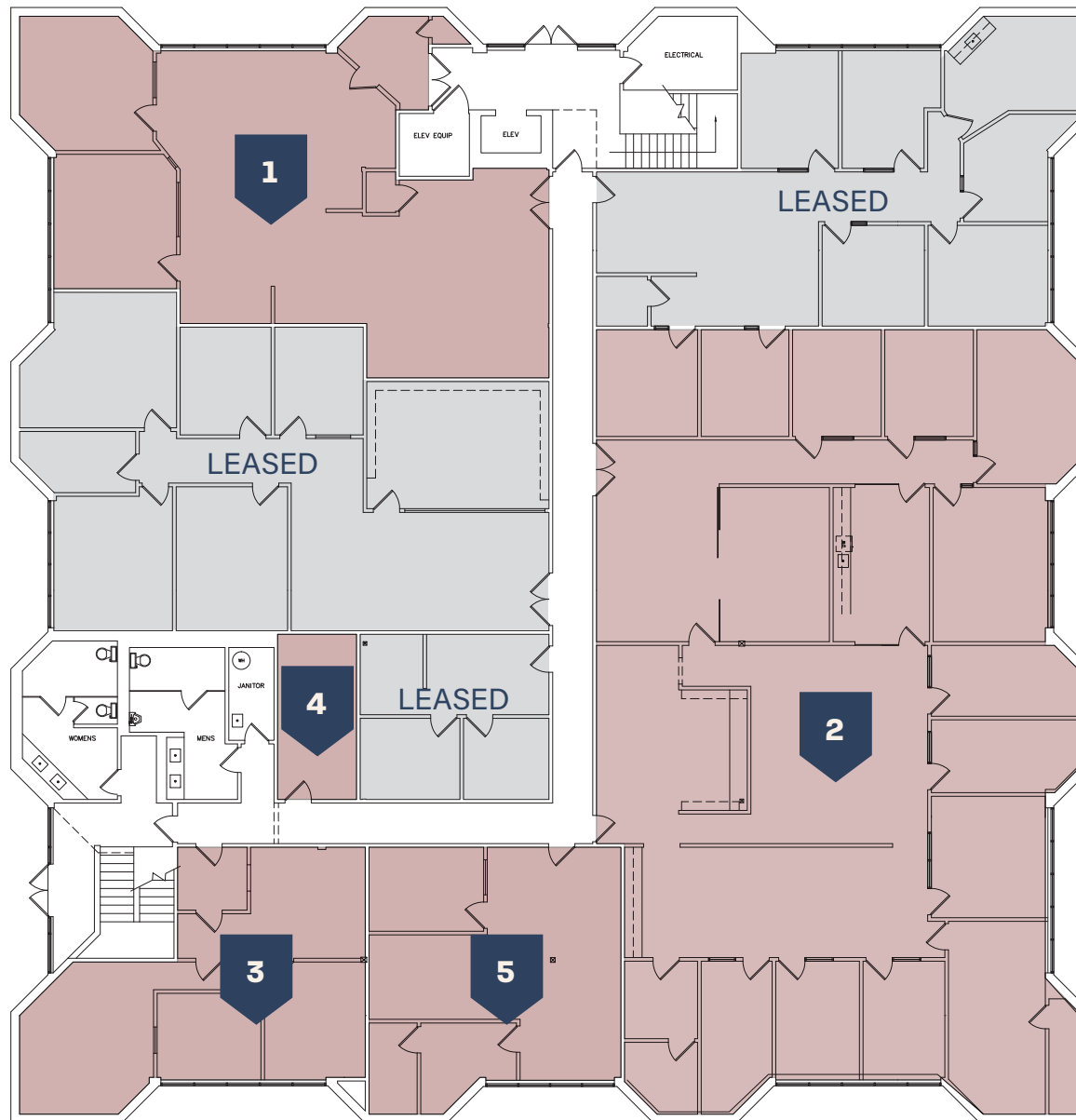
* Suites 105 & 109 may be combined for 6,245 SF

** Suites 201 & 214 may be combined for 6,296 SF



First Floor

±900 - ±9,189 RSF



1

Suite 100
±2,000 SF

2

Suite 105
±5,354 SF

3

Suite 111
±935 SF

4

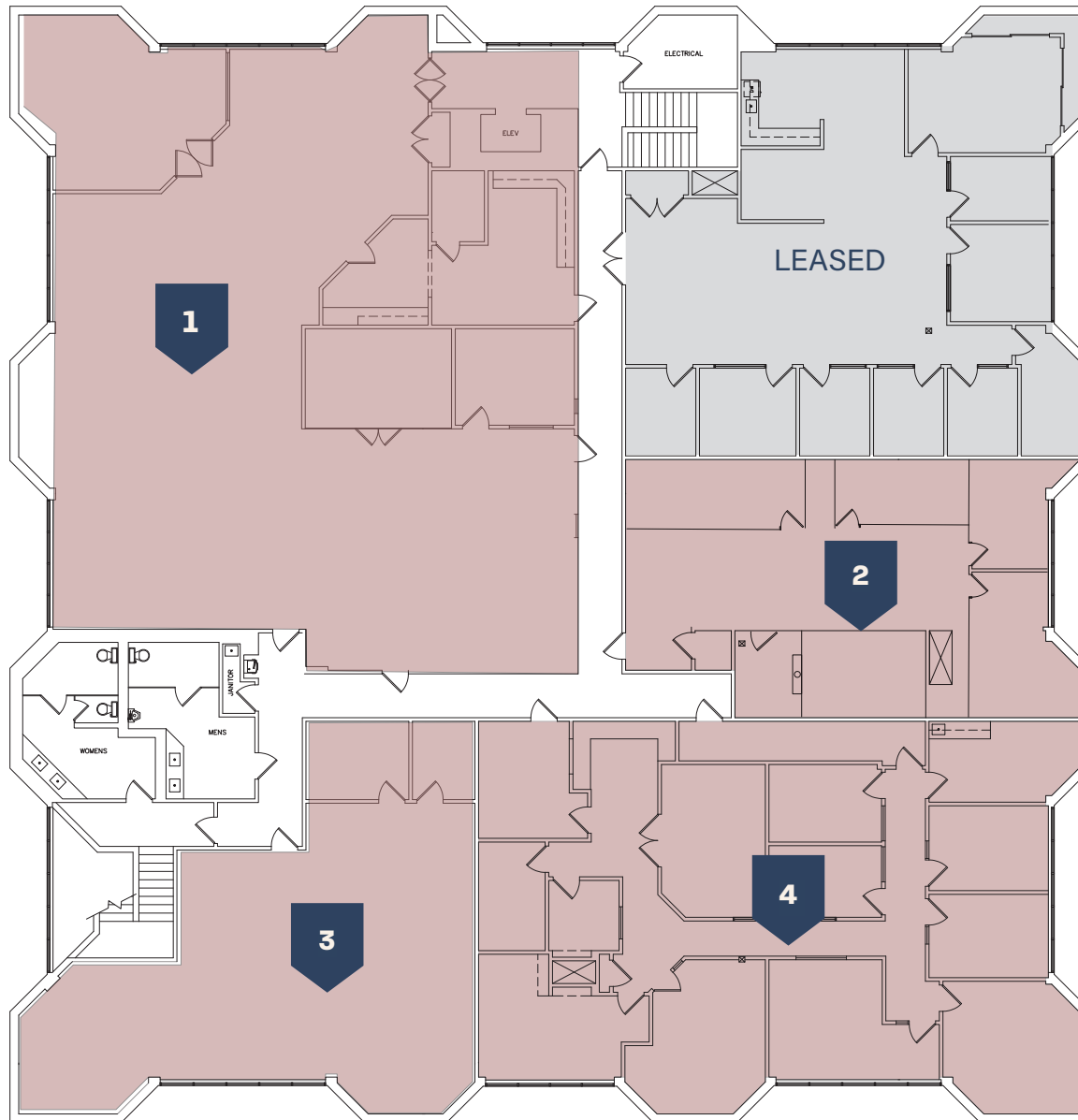
Suite 106 A
±190 SF

5

Suite 109
±900 SF

Second Floor

±1,532 - ±11,792 RSF



1

Suite 201
±3,540 SF

2

Suite 214
±3,360 SF

3

Suite 210
±1,532 SF

4

Suite 218
±3,360 SF

Amenities Map



San Jose

1155 North First St San Jose, CA



CONTACTS

Paul Lyles
First Vice President
+1 408 453 7443
paul.lyles@cbre.com
Lic. 01236021

Thor Wiles
Vice President
+1 408 453 7478
thor.wiles@cbre.com
Lic. 01237980

CBRE

© 2025 CBRE, Inc. All rights reserved. This information has been obtained from sources believed reliable but has not been verified for accuracy or completeness. CBRE, Inc. makes no guarantee, representation or warranty and accepts no responsibility or liability as to the accuracy, completeness, or reliability of the information contained herein. You should conduct a careful, independent investigation of the property and verify all information. Any reliance on this information is solely at your own risk. CBRE and the CBRE logo are service marks of CBRE, Inc. All other marks displayed on this document are the property of their respective owners, and the use of such marks does not imply any affiliation with or endorsement of CBRE. Photos herein are the property of their respective owners. Use of these images without the express written consent of the owner is prohibited.