

# POMONA MULTI-TENANT COMMERCIAL BUILDING

## FOR SALE



## Features

- ± 6,700 SF Building (Lot Size 28,000+ SF)
- Parking Ratio 8.5:1,000
- Great On-Site Corner Location
- Potential for Medical Owner/Occupant
- Potential for MFR Development Site
- Easy Access to 57/10 Freeways
- Nearby Pomona Civic Center/ Historic District
- Daily Traffic Count 23,800 CPD (as per City of Pomona)

For further information, please contact:



**Paul Kott Realtors, Inc.**  
RESIDENTIAL · COMMERCIAL · INDUSTRIAL · INVESTMENT

**PAUL KOTT / JOEL KOTT**

1225 W. Lincoln Avenue  
Anaheim, CA 92805  
714.772.7000 / 714.772.3372 Fax  
paulkott@paulkottrealtors.com  
www.paulkottrealtors.com  
DRE #00637576

## 416 N. Garey Avenue Pomona • California



# 416 N. GAREY AVENUE • POMONA, CA



**Paul Kott Realtors, Inc.**  
RESIDENTIAL • COMMERCIAL • INDUSTRIAL • INVESTMENT



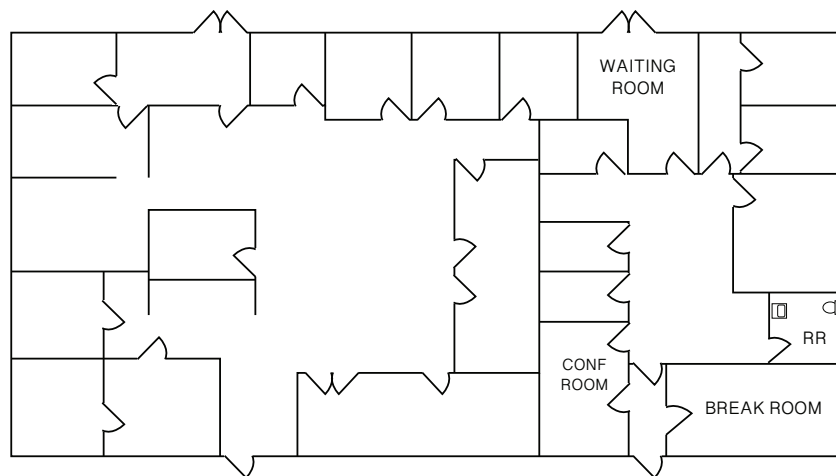
### PAUL KOTT

1225 W. Lincoln Avenue  
Anaheim, CA 92805  
714.772.7000 / 714.772.3372 Fax  
paulkott@paulkottrealtors.com  
www.paulkottrealtors.com  
DRE #00637576



### JOEL KOTT

1225 W. Lincoln Avenue  
Anaheim, CA 92805  
714.932.7727 / 714.772.3372 Fax  
joel@joelkott.com  
www.paulkottrealtors.com  
DRE #01842644



Partial Floorplan

No warranty or representation, express or implied, is made as to the accuracy of the information contained herein, and same is submitted subject to errors, omissions, change of price, rental or other conditions, withdrawal without notice, and to any special listing conditions, imposed by our principals.