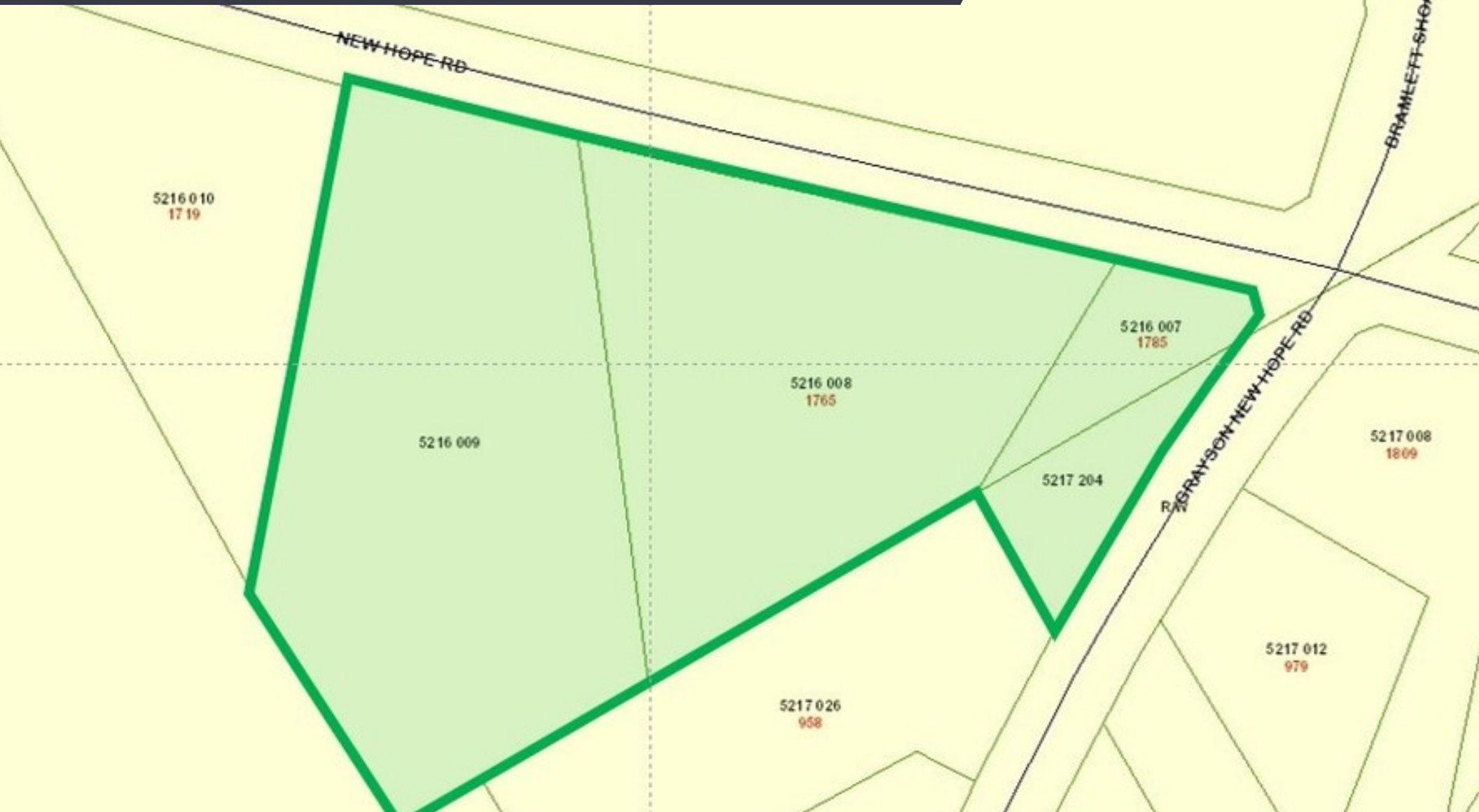


# ANCHORED RETAIL/MOB DEVELOPMENT SITE



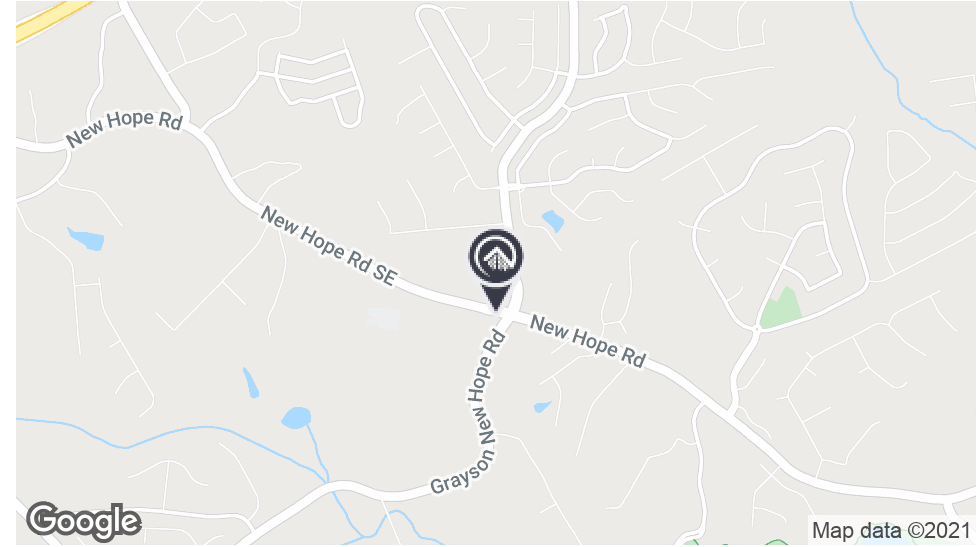
DEVELOPMENT SITE FOR SALE



**PERIMETER**  
COMMERCIAL REAL ESTATE

1785 NEW HOPE RD  
LAWRENCEVILLE, GA 30045

# EXECUTIVE SUMMARY



## OFFERING SUMMARY

Sale Price:	\$2,100,000
Available SF:	
Lot Size:	8.1 Acres
Price / Acre:	\$259,259
Zoning:	Commercial & Residential

## PROPERTY OVERVIEW

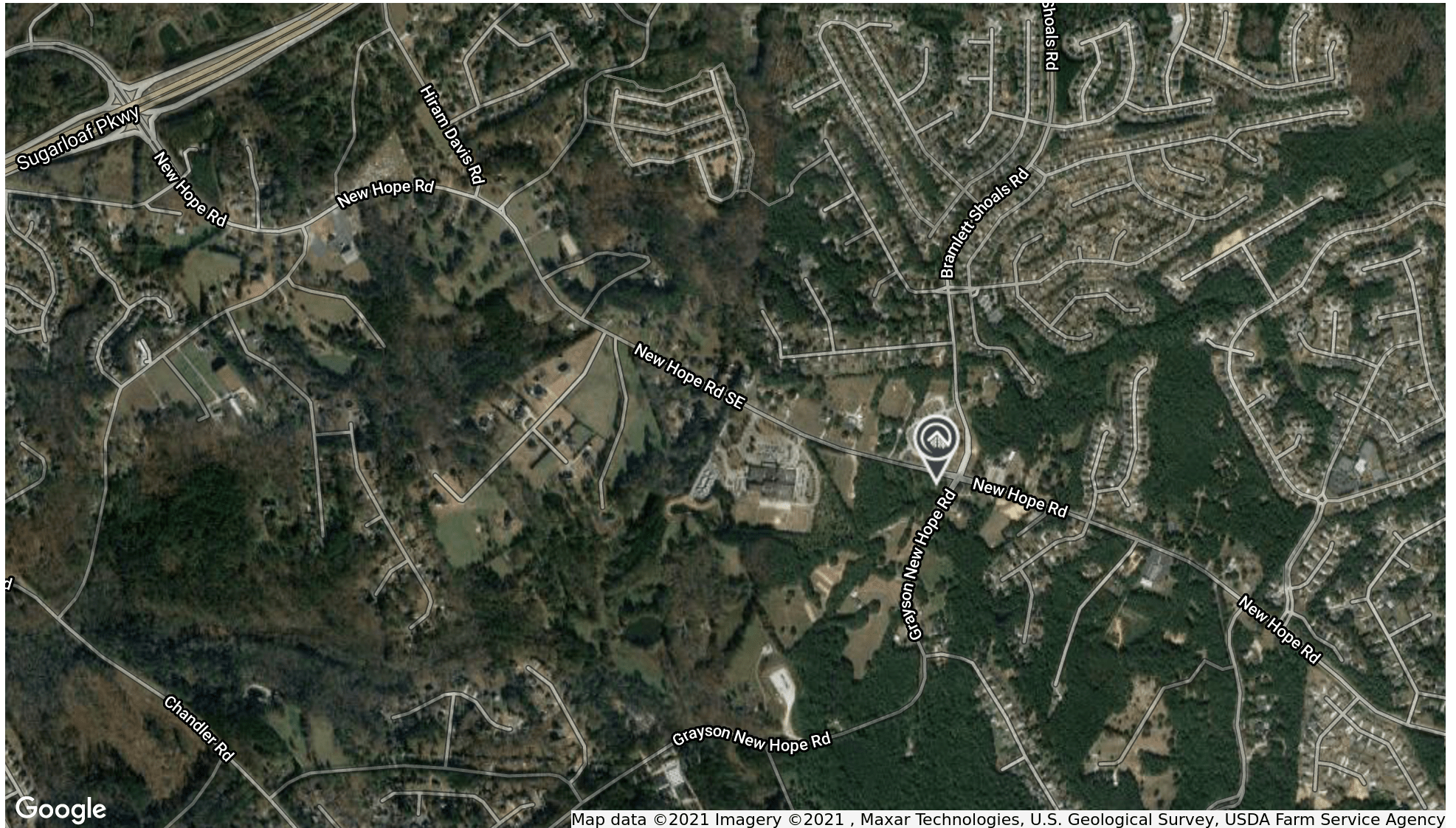
\$2.1M  
8.1 Acres  
Retail, grocery anchored or medical office development site  
All utilities available  
Adjacent to new DaVita Dialysis center  
Corner of New Hope Road and Grayson New Hope Road

FOR SALE  
1785 NEW HOPE RD

ROBERT POND  
678.277.5106  
rpond@perimetercre.com



# MAP

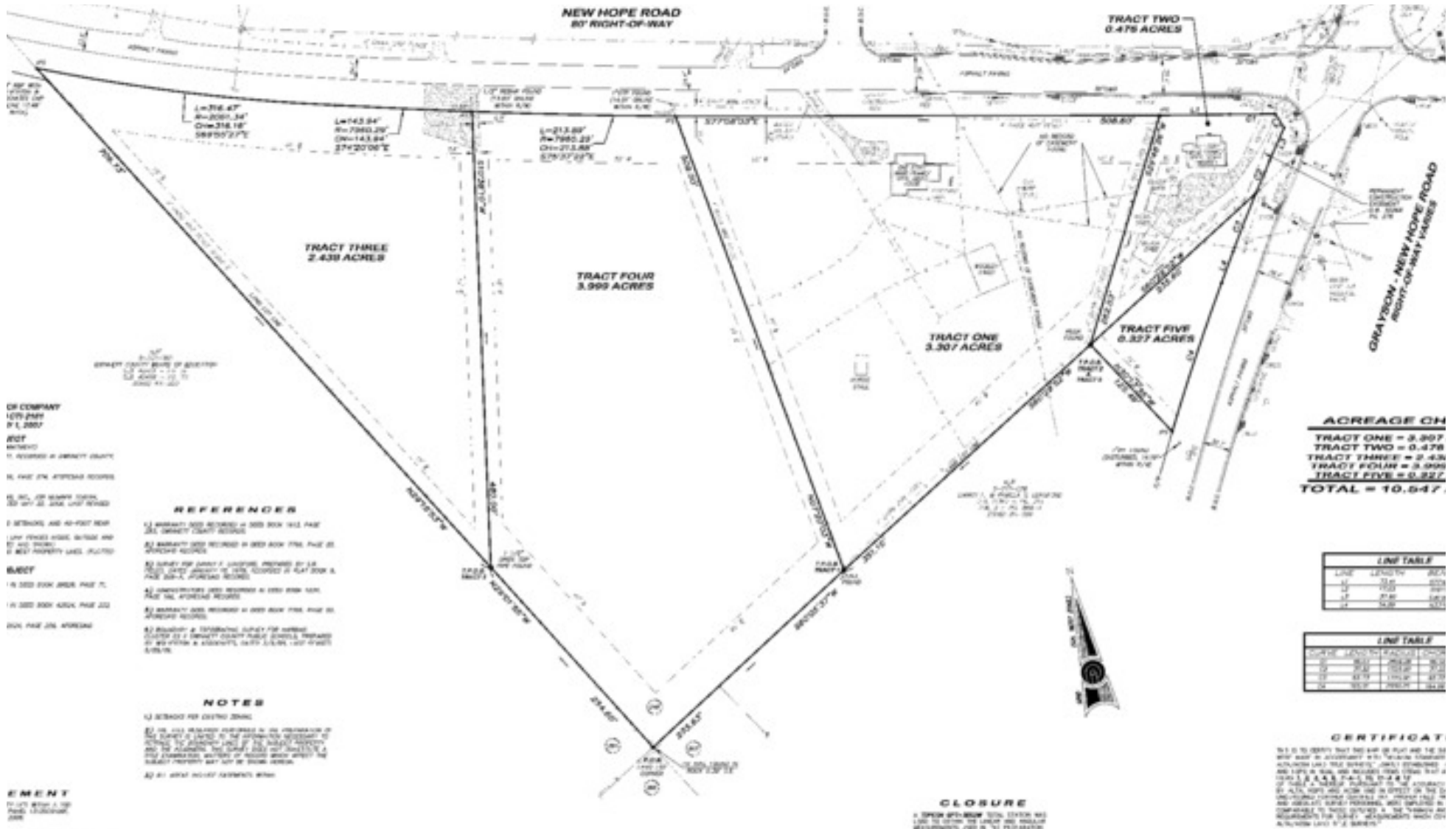


FOR SALE  
1785 NEW HOPE RD

ROBERT POND  
678.277.5106  
rpond@perimetercre.com



# SURVEY



FOR SALE  
1785 NEW HOPE RD

ROBERT POND  
678.277.5106  
rpound@perimetercre.com