



SPECIAL PURPOSE PROPERTY FOR SALE

Tennis & Racquetball Courts & Two Buildings On +/- 4.3 Acres

3050 Satterfield Rd Titusville, FL 32780

FOR SALE | \$950,000

presented by:

BRIAN L. LIGHTLE, CCIM, SIOR, CRE

Founder | Broker Associate

321.863.3228

brian@teamlbr.com

EXECUTIVE SUMMARY

• 3050 Satterfield Rd Titusville, FL 32780



OFFERING SUMMARY

Sale Price:	\$950,000
Price / SF:	\$97.27
Lot Size:	4.2 Acres
Year Built:	1982
Building Size:	9,767 SF
Zoning:	PUD
APN#:	22-35-17-00-00500.0-0000.00

PROPERTY OVERVIEW

Immense Potential for Forward Thinking Investors or End User, With Unique Vision & Requirements for A Special Purpose Property
Suited for a Variety of Recreational Opportunities with an Adaptable Layout for Innovative and Specialized Ventures
Future Land Use Recreational Zoning
Improved property with (6) Clay Tennis Courts, Lighted, and Two Buildings Constructed in 1982 on +/- 4.3 Acres
Building One -Two Story Office Building, with Screened Porch, Second Floor Balcony, Storage Areas and Locker Rooms, Restrooms
Building Two - Two Story Recreational Building, Four Racquetball Courts, Office, Supply Room and Open Area. Spiral Staircase leading to Second-Floor Open Space Overlooking the Racquetball Courts.
Exterior Lighting, Concrete Walkways, Covered Seating, Maintenance Shed, Ample Parking

LOCATION OVERVIEW

Located in North Brevard County, Florida known for its history, space innovation, and natural beauty. Surrounded by single-family homes and townhomes, the recreational center is located in suburban southwest Titusville.
Approximately 2.5 Miles off of State Road 405
Easy Access to Interstate 95, North and South

BRIAN L. LIGHTLE, CCIM, SIOR, CRE

Founder | Broker Associate
321.863.3228
brian@teamlbr.com

Lightle Beckner Robison, Inc.

321.722.0707 • teamlbr.com
70 W. Hibiscus Blvd.,
Melbourne, FL 32901

Information contained herein has been obtained through sources deemed reliable but cannot be guaranteed as to its accuracy. A purchaser or lessee is expected to verify all information to his/her own satisfaction. Zoning information subject to change and not warranted. Always confirm current requirements with local governing agencies.

ADDITIONAL PHOTOS

• 3050 Satterfield Rd Titusville, FL 32780



BRIAN L. LIGHTLE, CCIM, SIOR, CRE

Founder | Broker Associate
321.863.3228
brian@teamlbr.com

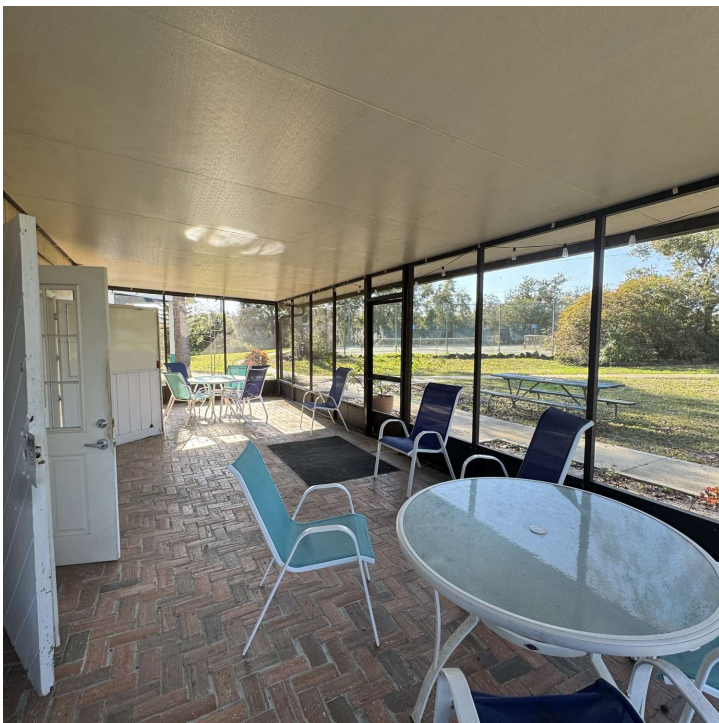
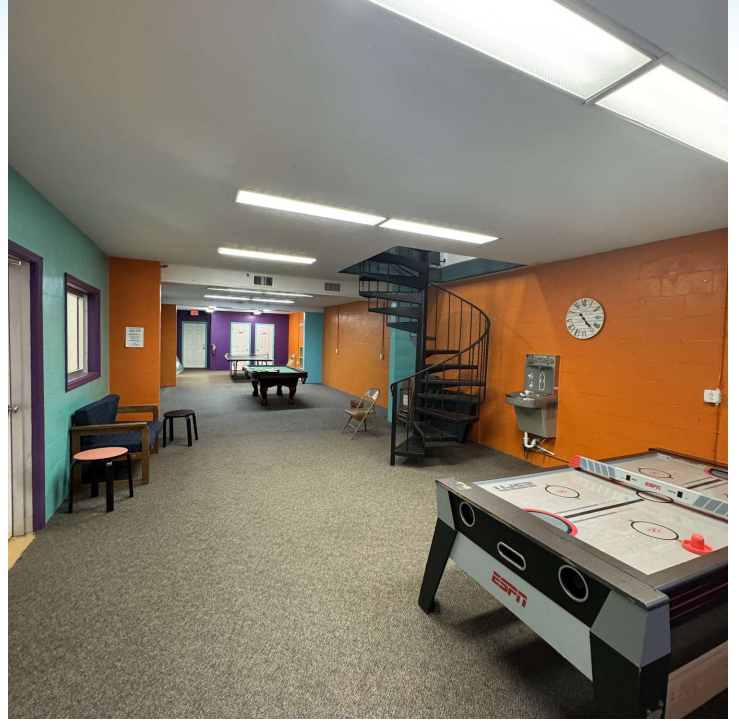
Lightle Beckner Robison, Inc.

321.722.0707 • teamlbr.com
70 W. Hibiscus Blvd.,
Melbourne, FL 32901

Information contained herein has been obtained through sources deemed reliable but cannot be guaranteed as to its accuracy. A purchaser or lessee is expected to verify all information to his/her own satisfaction. Zoning information subject to change and not warranted. Always confirm current requirements with local governing agencies.

ADDITIONAL PHOTOS

• 3050 Satterfield Rd Titusville, FL 32780



BRIAN L. LIGHTLE, CCIM, SIOR, CRE

Founder | Broker Associate
321.863.3228
brian@teamlbr.com

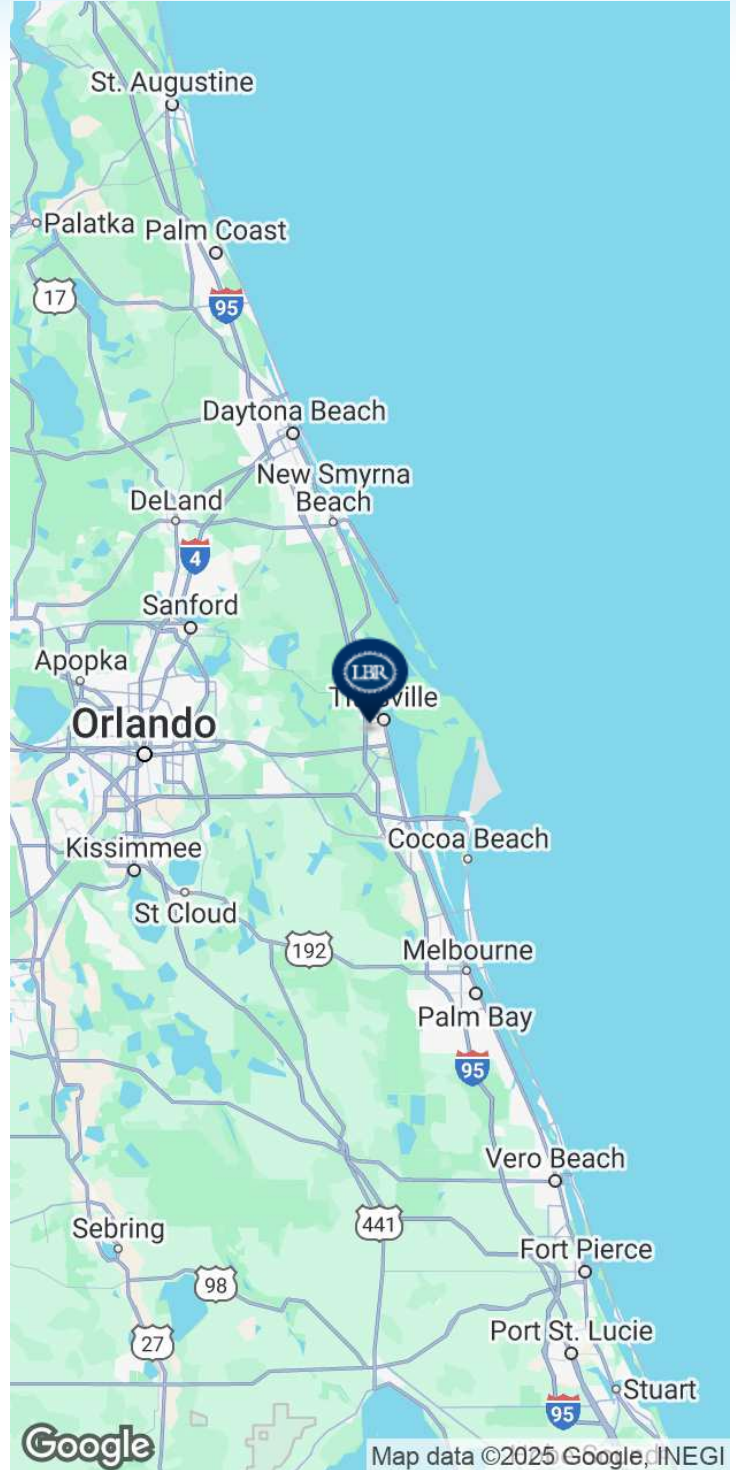
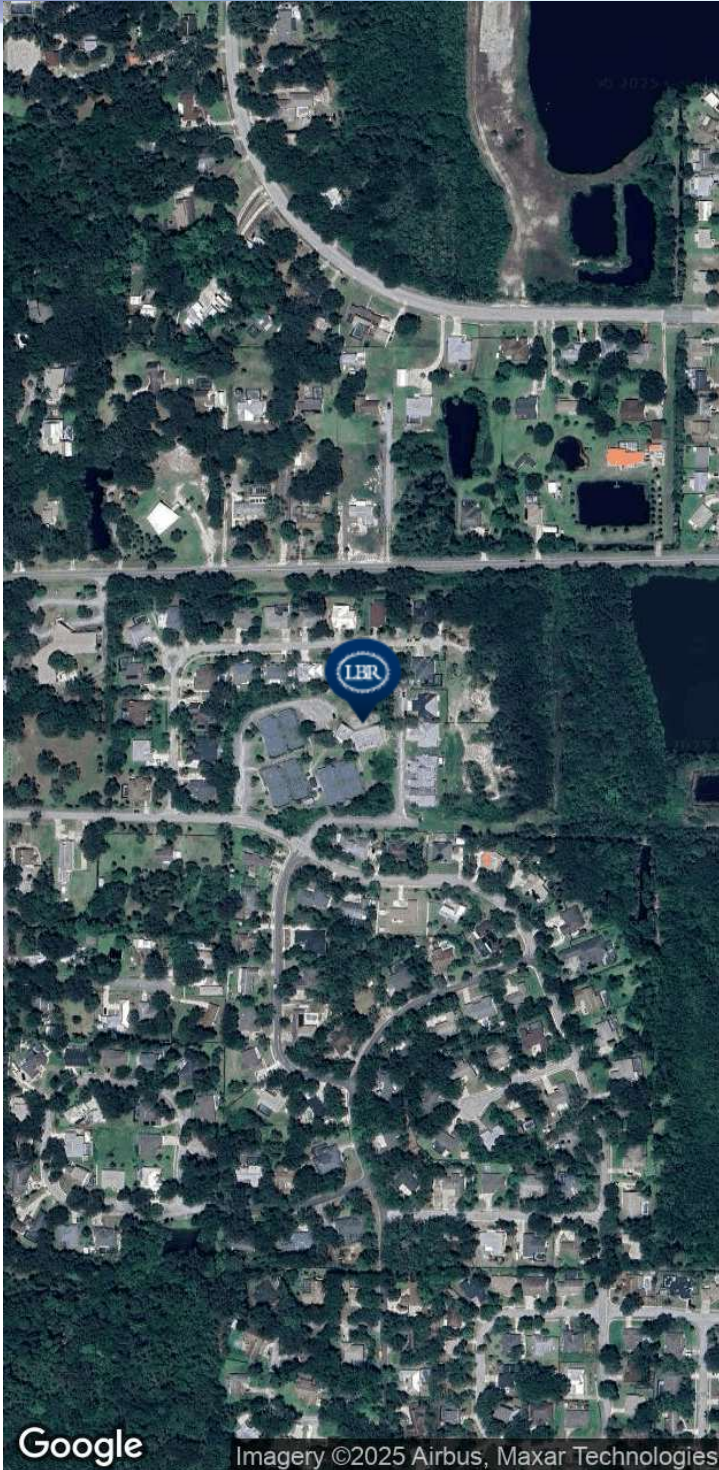
Lightle Beckner Robison, Inc.

321.722.0707 • teamlbr.com
70 W. Hibiscus Blvd.,
Melbourne, FL 32901

Information contained herein has been obtained through sources deemed reliable but cannot be guaranteed as to its accuracy. A purchaser or lessee is expected to verify all information to his/her own satisfaction. Zoning information subject to change and not warranted. Always confirm current requirements with local governing agencies.

LOCATION MAP

• 3050 Satterfield Rd Titusville, FL 32780



BRIAN L. LIGHTLE, CCIM, SIOR, CRE

Founder | Broker Associate
321.863.3228
brian@teamlbr.com

Lightle Beckner Robison, Inc.

321.722.0707 • teamlbr.com
70 W. Hibiscus Blvd.,
Melbourne, FL 32901

Information contained herein has been obtained through sources deemed reliable but cannot be guaranteed as to its accuracy. A purchaser or lessee is expected to verify all information to his/her own satisfaction. Zoning information subject to change and not warranted. Always confirm current requirements with local governing agencies.