

STARPOINTE BUSINESS PARK



Pine Street / RPS

200, 255, 280 Business Park Circle, St. Augustine, FL, 32095 150, 155 St. Johns Business Place, St Augustine, FL, 32095



18,900± SF AVAILABLE FOR LEASE UNITS RANGING 1,100 - 4,400± SF

Starpointe Business Park offers a collection of five modern flex and office buildings totaling nearly 78,000± SF in St. Johns County.

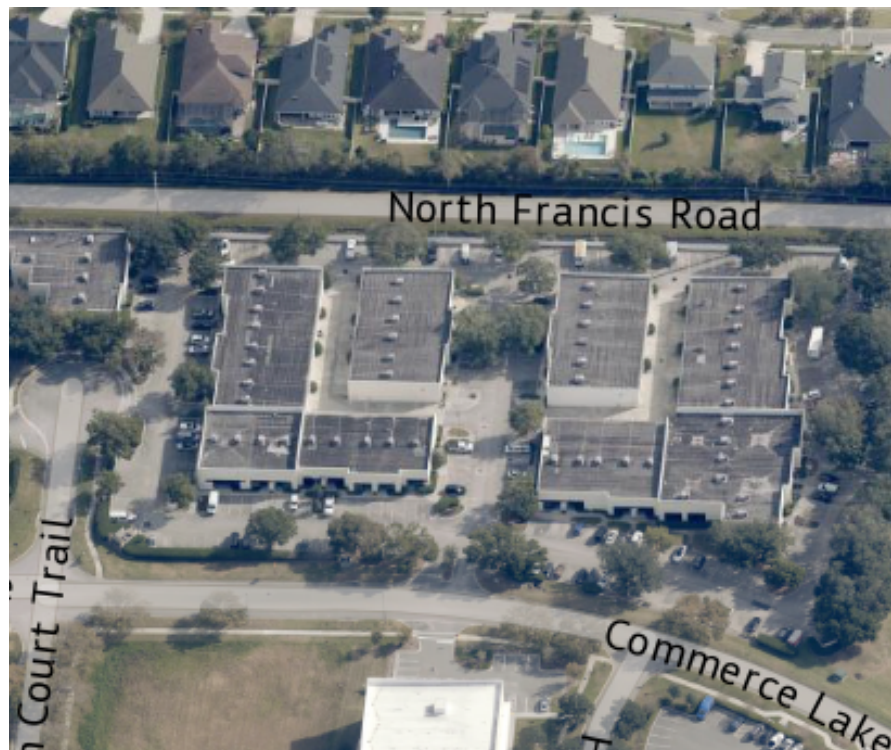
Conveniently located at I-95 and International Golf Parkway, the park provides excellent access to Jacksonville, St. Augustine, and major transportation routes across Northeast Florida. Each building features efficient layouts, multiple drive-in doors, and ample parking, making it well-suited for light industrial, distribution, and professional users. Tenants benefit from nearby amenities, including World Golf Village, restaurants, hotels, and retail centers — creating an ideal environment for businesses seeking both convenience and quality space

Leasing Contacts

Mark Wainwright
(904) 728-1085
Mark@psrps.com

Summer Wainwright
(904) 377-4949
Summer@psrps.com

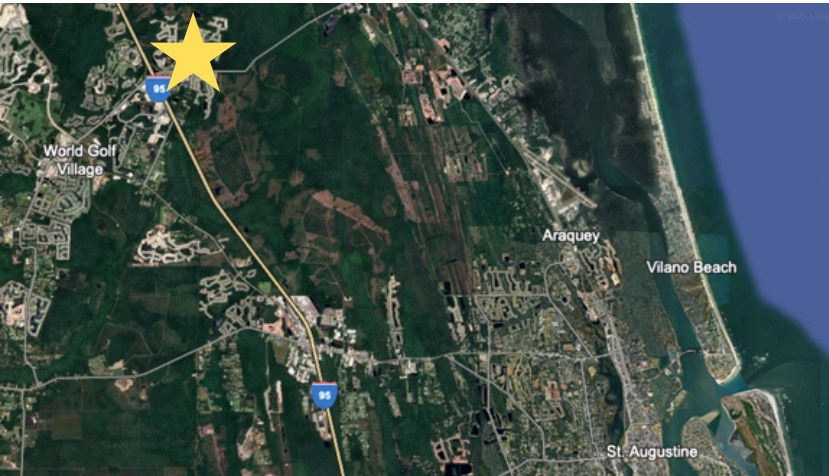
All information is deemed accurate but subject to errors / omissions



Starpointe Business Park | For Lease

Building Address	Use	Zoning	Loading	Ceiling Height
200 Business Park Circle	Flex / Distribution	PUD	11 Drive-ins 10' x 12'	14'-15±
255 Business Park Circle	Office	PUD	-	14'-15±
280 Business Park Circle	Flex / Distribution	DRI	11 Drive-ins 10' x 12'	14'-15±
150 St. Johns Business Place	Flex / Distribution	PUD	6 Drive-ins 10' x 12'	14'-15±
155 St. Johns Business Place	Flex / Distribution	PUD	1 Drive-in 10' x 12'	14'-15±

Available Units	Size (SF)	Loading	Lease Rate
200 Business Park Circle			
103-104	4,452	Grade-level (2)	\$14.00 PSF, NNN
108	1,855	Grade-level (1)	\$14.00 PSF, NNN
109	1,966	Grade-level (1)	\$14.00 PSF, NNN
280 Business Park Circle			
401-403	4,044	Grade-level (3)	\$14.00 PSF, NNN
406	1,340	Grade-level (1)	\$14.00 PSF, NNN
407	1,278	-	\$14.00 PSF, NNN
409	1,107	-	\$14.00 PSF, NNN
411	1,420	Grade-level (1)	\$14.00 PSF, NNN
150 St. Johns Business Place			
301	1,440	Grade-level (1)	\$14.00 PSF, NNN
305-306	3,096	Grade-level (2)	\$14.00 PSF, NNN
155 St. Johns Business Place			
206	1,608	Grade-level (1)	\$14.00 PSF, NNN



Location Highlights (Miles)	
I-95	.05±
US 1	4.6±
Downtown St. Augustine	13.1±
Downtown Jacksonville	28.9±

200 Business Park Circle



255 Business Park Circle



280 Business Park Circle



150 St Johns Business Place



155 St Johns Business Place



Mark Wainwright: (904) 728-1085 | Mark@psrps.com

Summer Wainwright: (904) 377-4949 | Summer@psrps.com

Pine Street / RPS, LLC | (904) 398-1044 | 2650-2 Rosselle Street, Jacksonville, FL 32204 | pinestreetrps.com

All information is deemed accurate but subject to errors and/or omissions.