



RETAIL PROPERTY FOR LEASE

# HARMON RANCH

SWC Ray Rd & Rural Rd | Chandler, AZ 85226

**KATIE WEEKS**

602.368.1372

kweeks@w-retail.com

**BRYAN LEDBETTER**

602.795.8670

bledbetter@w-retail.com

**WESTERN RETAIL ADVISORS**

2555 E Camelback Rd, Suite 200

Phoenix, AZ 85016

602.778.3747 | w-retail.com

# HARMON RANCH

SWC Ray Rd & Rural Rd | Chandler, AZ



## LOCATION DESCRIPTION

SWC Rural Rd & Ray Rd - Chandler

## PROPERTY HIGHLIGHTS

- 1,200 SF (Medical) Space Available along Ray Rd
- Located 2 miles from Loop 101 & I-10 freeways
- Limited retail availability in area
- Dense affluent residential area
- Average Household Income nearly \$163,000 within 1-mile

## AREA COTENANTS



The information contained within this brochure has been obtained from sources other than Western Retail Advisors, LLC. Western Retail Advisors have not verified such information and make no guarantee, warranty, or representation about such information. It is your responsibility to independently confirm its accuracy and completeness. Any dimensions, specifications, floor plans, and information may not be accurate and should be verified by you prior to the lease or purchase of the property.

# HARMON RANCH

SWC Ray Rd & Rural Rd | Chandler, AZ



## LEGEND

Available

Unavailable

The information contained within this brochure has been obtained from sources other than Western Retail Advisors, LLC. Western Retail Advisors have not verified such information and make no guarantee, warranty, or representation about such information. It is your responsibility to independently confirm its accuracy and completeness. Any dimensions, specifications, floor plans, and information may not be accurate and should be verified by you prior to the lease or purchase of the property.

# HARMON RANCH

SWC Ray Rd &amp; Rural Rd | Chandler, AZ

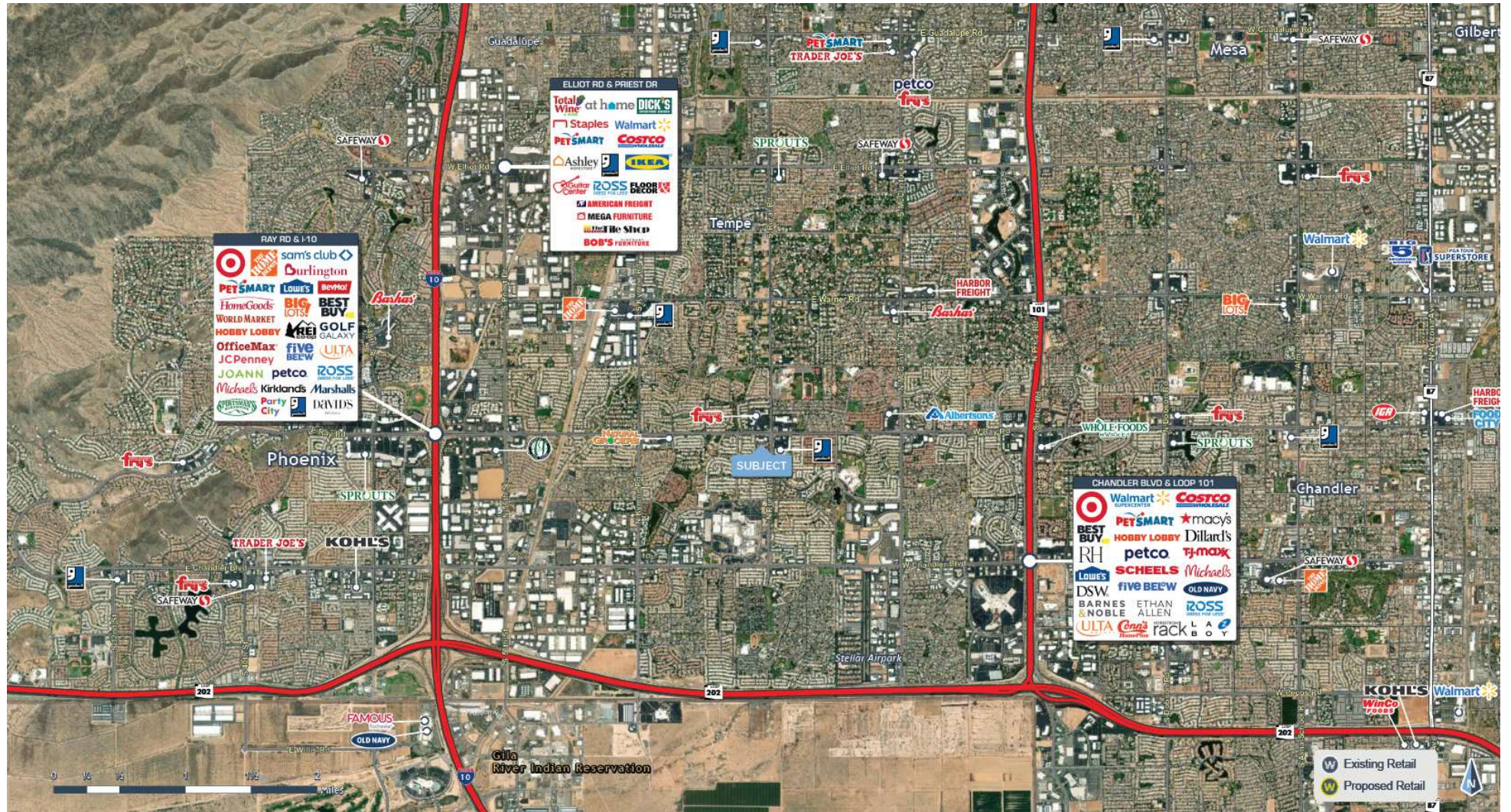
## AVAILABLE SPACES

SUITE	TENANT	SIZE	DESCRIPTION	PLANS/PHOTOS
1	SZECHUAN GARDEN	2,000 SF	-	-
2	HOP CENTRAL	1,971 SF	-	-
3/4	RUBIO'S MEXICAN GRILL	2,200 SF	-	-
5	MYRANDA'S FINE JEWELRY	900 SF	-	-
6	PIZZA HUT	1,400 SF	-	-
7	SUMO SNOW	1,200 SF	-	-
8	SWADDEE THAI	2,280 SF	-	-
9/10	CLOTHESMENTOR	3,362 SF	-	-
11	H&R BLOCK	1,500 SF	-	-
12	JERSEY MIKE'S	1,500 SF	-	-
13/14	PINK POLISH DAY SPA	3,000 SF	-	-
17	DENTAL	1,923 SF	-	-
18/19	MATHNASIUM	1,923 SF	-	-
20	DATA DOCTORS	1,180 SF	-	-
<b>21</b>	<b>Available</b>	<b>1,200 SF</b>	<b>MEDICAL BUILDOUT</b>	<a href="#">View Here</a>
22	STATE FARM	1,200 SF	-	-

*The information contained within this brochure has been obtained from sources other than Western Retail Advisors, LLC. Western Retail Advisors have not verified such information and make no guarantee, warranty, or representation about such information. It is your responsibility to independently confirm its accuracy and completeness. Any dimensions, specifications, floor plans, and information may not be accurate and should be verified by you prior to the lease or purchase of the property.*

# HARMON RANCH

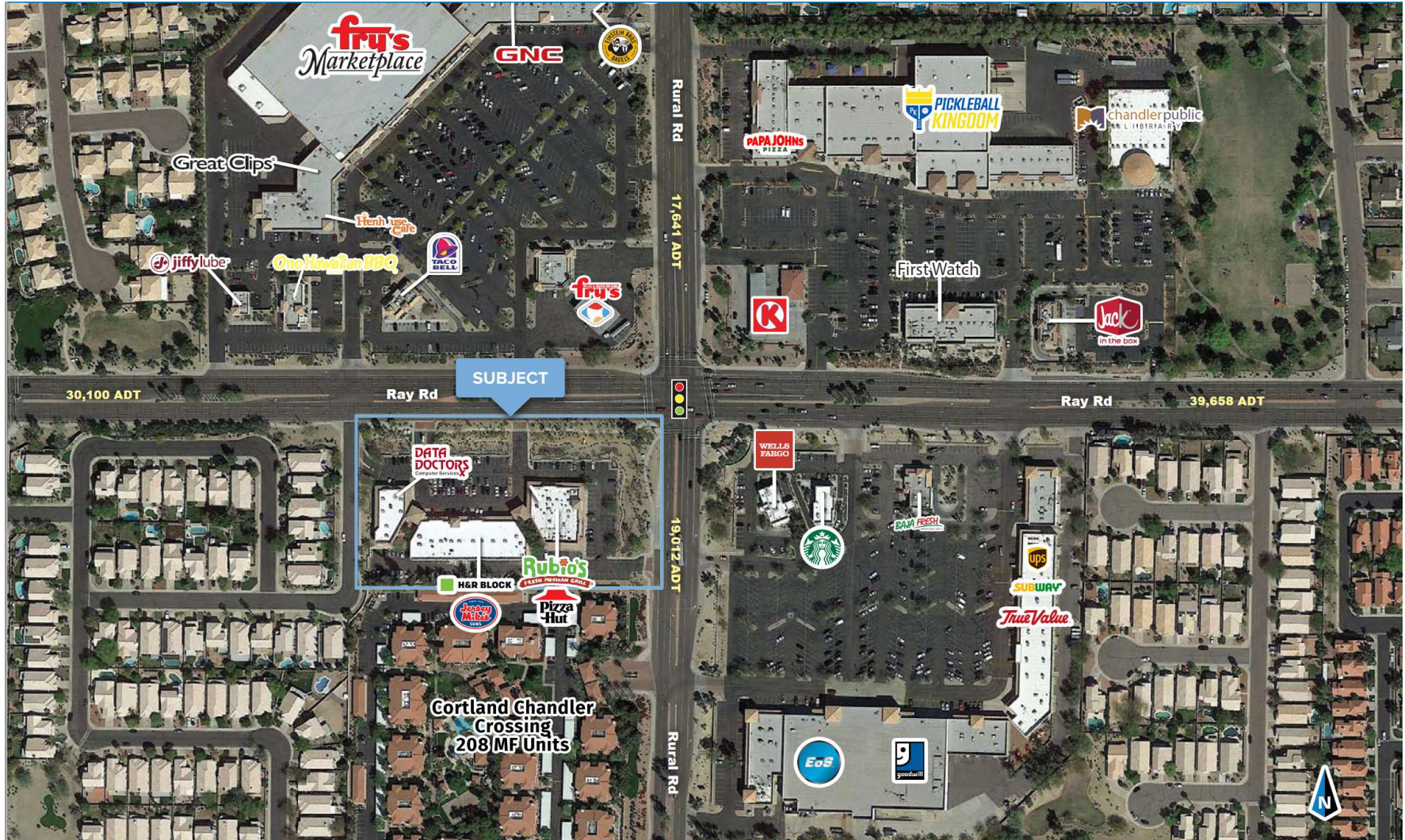
SWC Ray Rd & Rural Rd | Chandler, AZ



The information contained within this brochure has been obtained from sources other than Western Retail Advisors, LLC. Western Retail Advisors have not verified such information and make no guarantee, warranty, or representation about such information. It is your responsibility to independently confirm its accuracy and completeness. Any dimensions, specifications, floor plans, and information may not be accurate and should be verified by you prior to the lease or purchase of the property.

# HARMON RANCH

SWC Ray Rd & Rural Rd | Chandler, AZ



The information contained within this brochure has been obtained from sources other than Western Retail Advisors, LLC. Western Retail Advisors have not verified such information and make no guarantee, warranty, or representation about such information. It is your responsibility to independently confirm its accuracy and completeness. Any dimensions, specifications, floor plans, and information may not be accurate and should be verified by you prior to the lease or purchase of the property.

# HARMON RANCH

SWC Ray Rd & Rural Rd | Chandler, AZ



## POPULATION

	1 MILE	3 MILES	5 MILES
Area Total	13,989	90,306	269,131
Median Age	41.3	37.9	37.2



## HOUSEHOLD INCOME

	1 MILE	3 MILES	5 MILES
Median	\$120,199	\$101,224	\$89,811
Average	\$162,618	\$135,920	\$120,601



## DAYTIME WORKFORCE

	1 MILE	3 MILES	5 MILES
Total Businesses	370	4,305	9,978
Employees	3,589	71,087	145,789
Daytime Population	11,288	122,943	291,858



## EDUCATION

	1 MILE	3 MILES	5 MILES
Percentage with Degrees	35.3%	32.5%	29.5%



## EMPLOYMENT

	1 MILE	3 MILES	5 MILES
White Collar Occupation	78.7%	77.1%	74.4%
Services	10.2%	10.3%	11.7%
Blue Collar	11.1%	12.6%	13.8%



## HOUSEHOLD STATISTICS

	1 MILE	3 MILES	5 MILES
Households	5,344	37,313	109,861
Median Home Value	\$444,024	\$420,241	\$385,990

\* 2023 Demographic data derived from ESRI

The information contained within this brochure has been obtained from sources other than Western Retail Advisors, LLC. Western Retail Advisors have not verified such information and make no guarantee, warranty, or representation about such information. It is your responsibility to independently confirm its accuracy and completeness. Any dimensions, specifications, floor plans, and information may not be accurate and should be verified by you prior to the lease or purchase of the property.