

FOR LEASE

**505 E Grant Street
Minneapolis, MN**



EAST TOWN

Office Downtown Minneapolis

Building Size:	19,815 SF
Min SF:	1,195 SF
Max Contig:	19,815 SF
Available Space:	19,815 SF

Suite 100 -	1,195	- 6,925 SF
Suite 2A -	1,223	- 6,968 SF
Suite 300 -		- 6,887 SF
Total -		19,815 SF

John Higgins
612-702-3104
John@Guidedcre.com

2216 Central Ave NE
Minneapolis, MN 55418



Site Plan

- Building Type: Office
- Availability: Immediately
- Lease Rate: \$5 PSF Net
- Available Space:

Suite 100 -	1,195	- 6,925 SF
Suite 2A -	1,223	- 6,968 SF
<u>Suite 300 -</u>		<u>- 6,887 SF</u>
Total -		19,815 SF



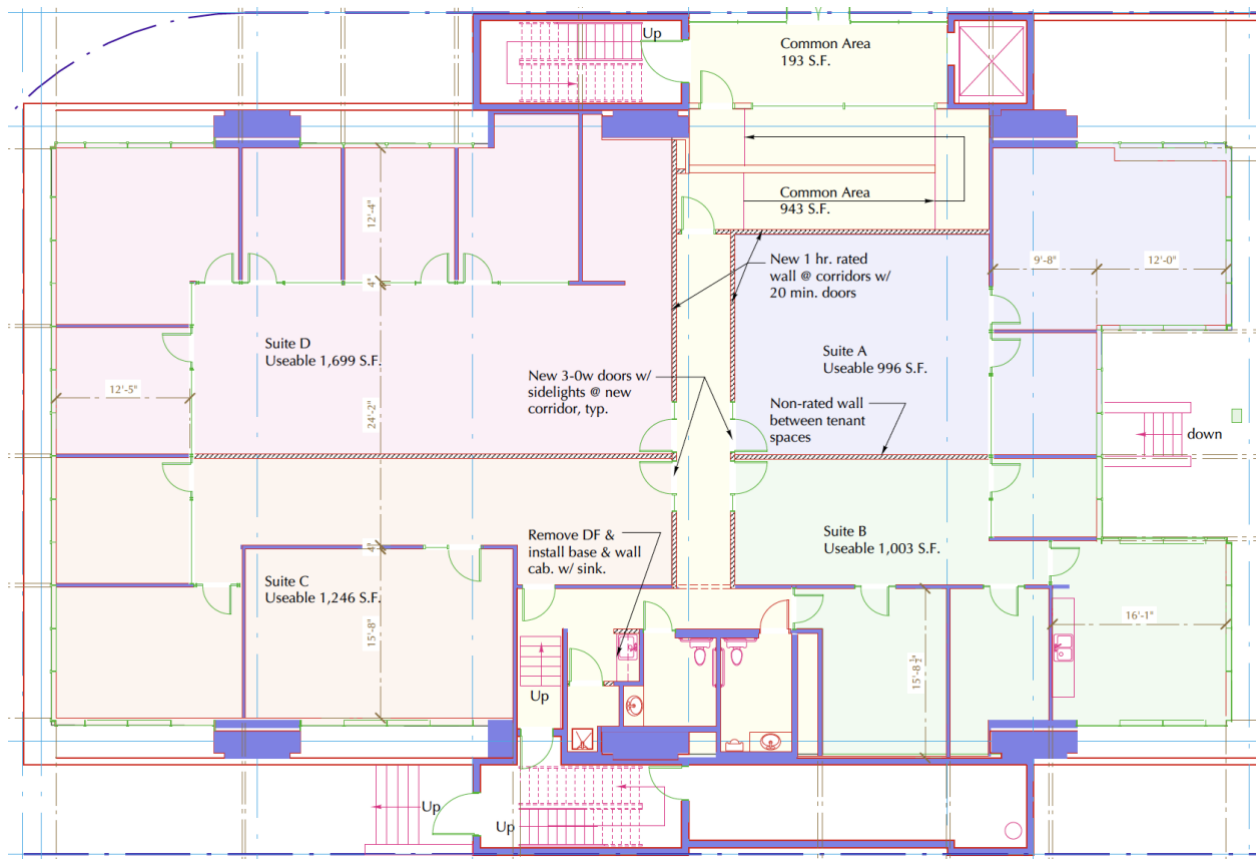
***15 Parking Stalls available outside of office lease.**

Floor 1



Available – 6,925 SF

Divisible to 1,195 RSF



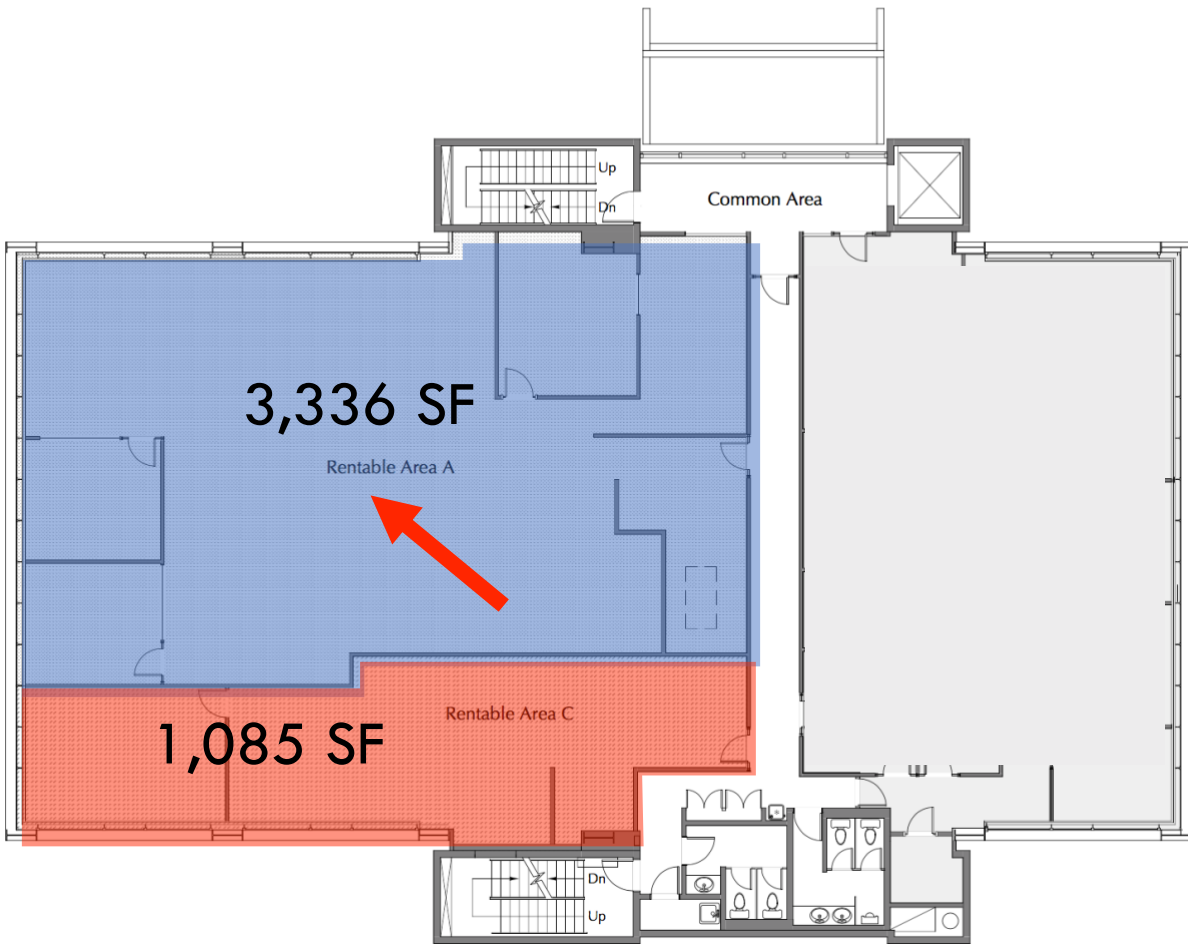
John Higgins
612-702-3104
John@Guidedcre.com

2216 Central Ave NE
Minneapolis, MN 55418



Floor 2

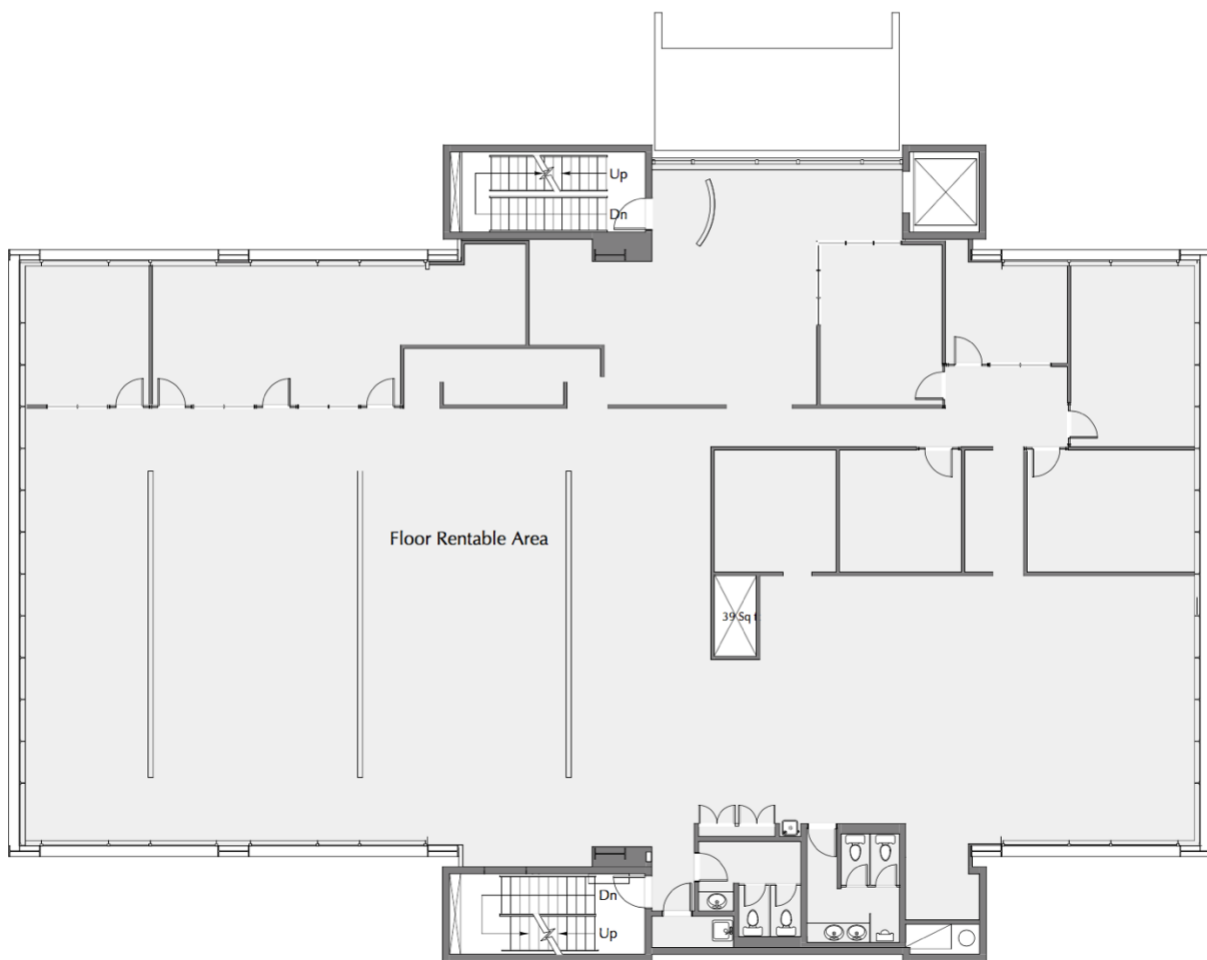
Max Contiguous – 19,815 SF



Floor 3

3rd Floor – 6,877 SF

Max Contiguous – Full Building - 19,815 SF



Transit/ Parking

Bus Routes

- 39 – [Schedule/ Map](#) – Hopkins – DT Mpls – 46th/ Hiawatha LR
- 9 – [Schedule/ Map](#) – Target Center – Abbott Hospital (S. Mpls)

Parking

1. Onsite - 15 Parking Stalls available outside of main lease
2. 1000 Park – 3 min walk, 0.2 miles, \$123 per month
3. Central Lutheran Ramp – 5-minute walk, 0.2 miles
4. Lemington Ramp – 7-minute walk, 0.3 miles
5. Century Plaza (2096) - \$110 per month

