

116 Jefferson Street

116 Jefferson Street, Huntsville, AL 35801

322-1,700 sq Ft
Office Spaces - For Lease



Location



Property Highlights

- Individual office suites available.
- Common areas include conference room, break area, restrooms, elevator.
- Convenient parking.
- Easy access to Memorial Parkway and I-565.

Area Demographics

	Population	Total Households	Average HH Income
1 Mile	7,582	2,888	\$73,152
3 Mile	62,668	26,491	\$55,610
5 Mile	129,815	53,898	\$57,364

NAI Chase Commercial

Commercial Real Estate Services, Worldwide.

P.O. Box 18153, Huntsville, AL 35804
www.chasecommercial.com

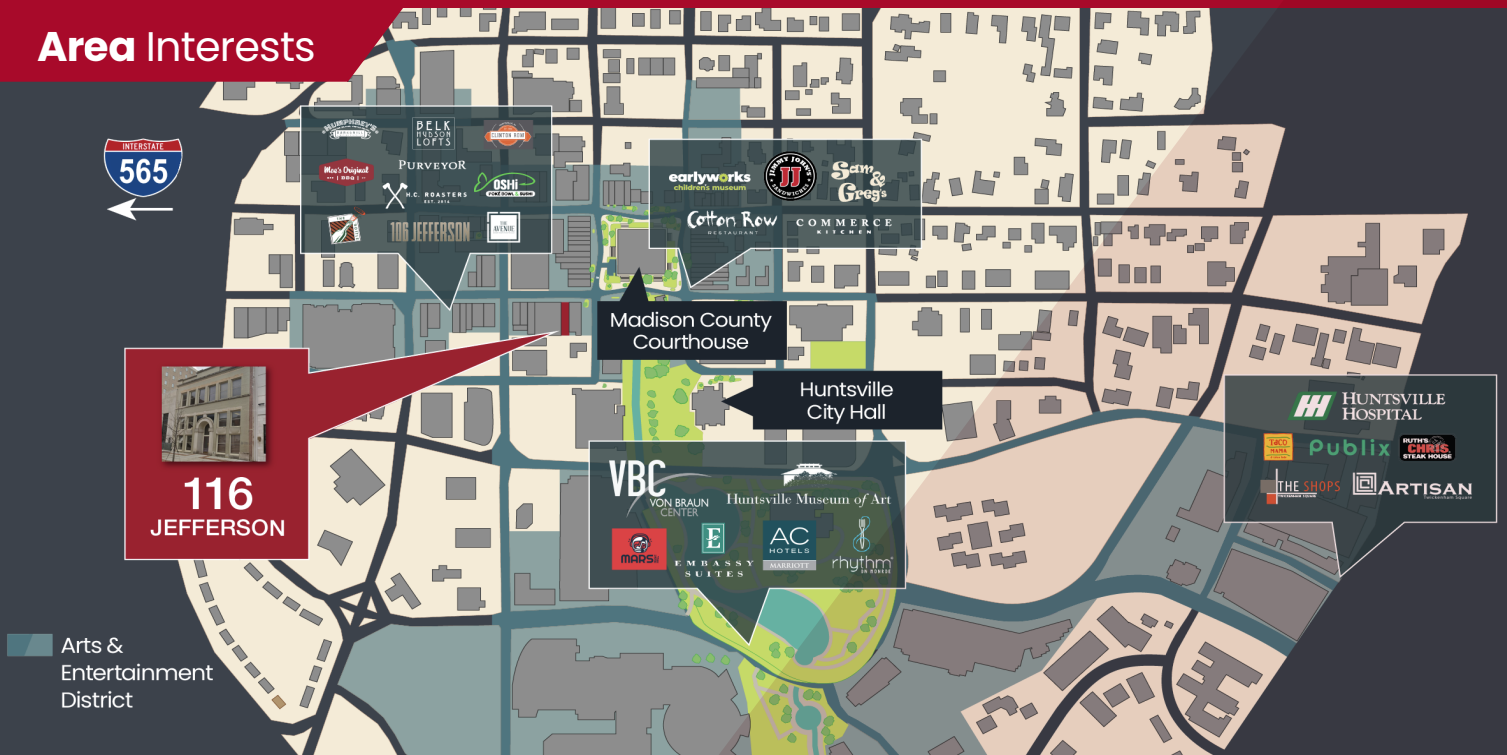
Gregg Hess
hessg@chasecommercial.com
C 256 655-8483

Charlie Grelier, Jr.
cgj@chasecommercial.com
C 256 783-4160

116 Jefferson Street

116 Jefferson Street, Huntsville, AL 35801

Area Interests

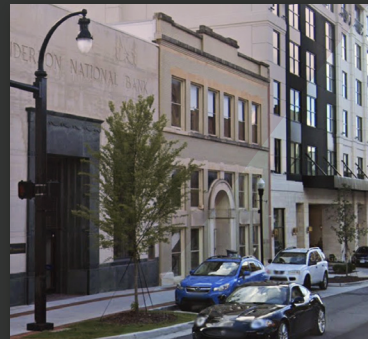


More Information

Four story historic office building, located in Downtown Central Business District providing easy access to I-565 and minutes from Memorial Parkway. Private individual office suites available. community conference room, break area, common restrooms, elevator and on site storage. Parking is located across the street. Convenient to City of Huntsville downtown parking garages and metered parking curbside.



For more information and to see other available properties, check out this listing at chasecommercial.com or scan the QR code on your mobile device.



NAI Chase Commercial

Commercial Real Estate Services, Worldwide.

P.O. Box 18153, Huntsville, AL 35804

www.chasecommercial.com



INDIVIDUAL MEMBERSHIPS

NO WARRANTY OR REPRESENTATION, EXPRESS OR IMPLIED, IS MADE AS TO THE ACCURACY OF THE INFORMATION CONTAINED HEREIN, AND THE SAME IS SUBMITTED SUBJECT TO ERRORS, OMISSIONS, CHANGE OF PRICE, RENTAL OR OTHER CONDITIONS, PRIOR SALE, LEASE OR FINANCING, OR WITHDRAWAL WITHOUT NOTICE, AND OF ANY SPECIAL LISTING CONDITIONS IMPOSED BY OUR PRINCIPAL. NO WARRANTIES OR REPRESENTATIONS ARE PROPERTY OR HAZARDS CONTAINED THEREIN.