



Approximate plot lines, subject to verification of survey

FOR LEASE

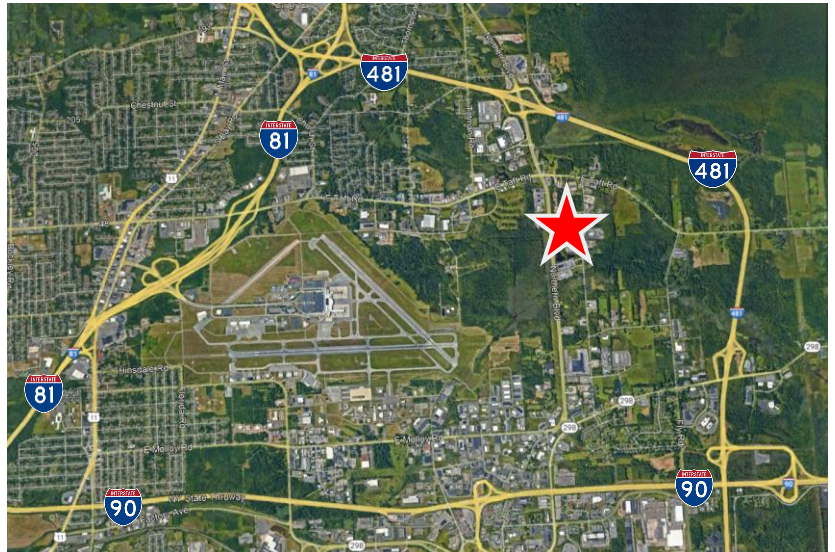
6.0± ACRES OF INDUSTRIAL ZONED LAND

Property Highlights

- Easily accessible to I-481, I-90 (NYS Thruway), I-690 and I-81
- Zoned Industrial (Town of Cicero)
- Surface is hard pack stone
- Fully fenced secure yard
- Ideal for trailer parking or laydown yard

Drive Time / Distance

I-481 (Northern Blvd)	4 Minutes / 1.5 Miles
I-90 (Carrier Circle)	6 Minutes / 3.3 Miles
I-690 (via I-481)	15 Minutes / 6.4 Miles
I-81 (Taft Road)	7 Minutes / 3.1 Miles



EXCLUSIVE CONTACT

Mark Austin
Real Estate Salesperson
+1 315 445 8538
maustin@pyramidbrokerage.com

Gary G. Cottet
Associate Real Estate Broker
+1 315 445 8529
gcottet@pyramidbrokerage.com

5845 Widewaters Parkway, Suite 200
East Syracuse, New York 13057
+1 315 445 1030
pyramidbrokerage.com



