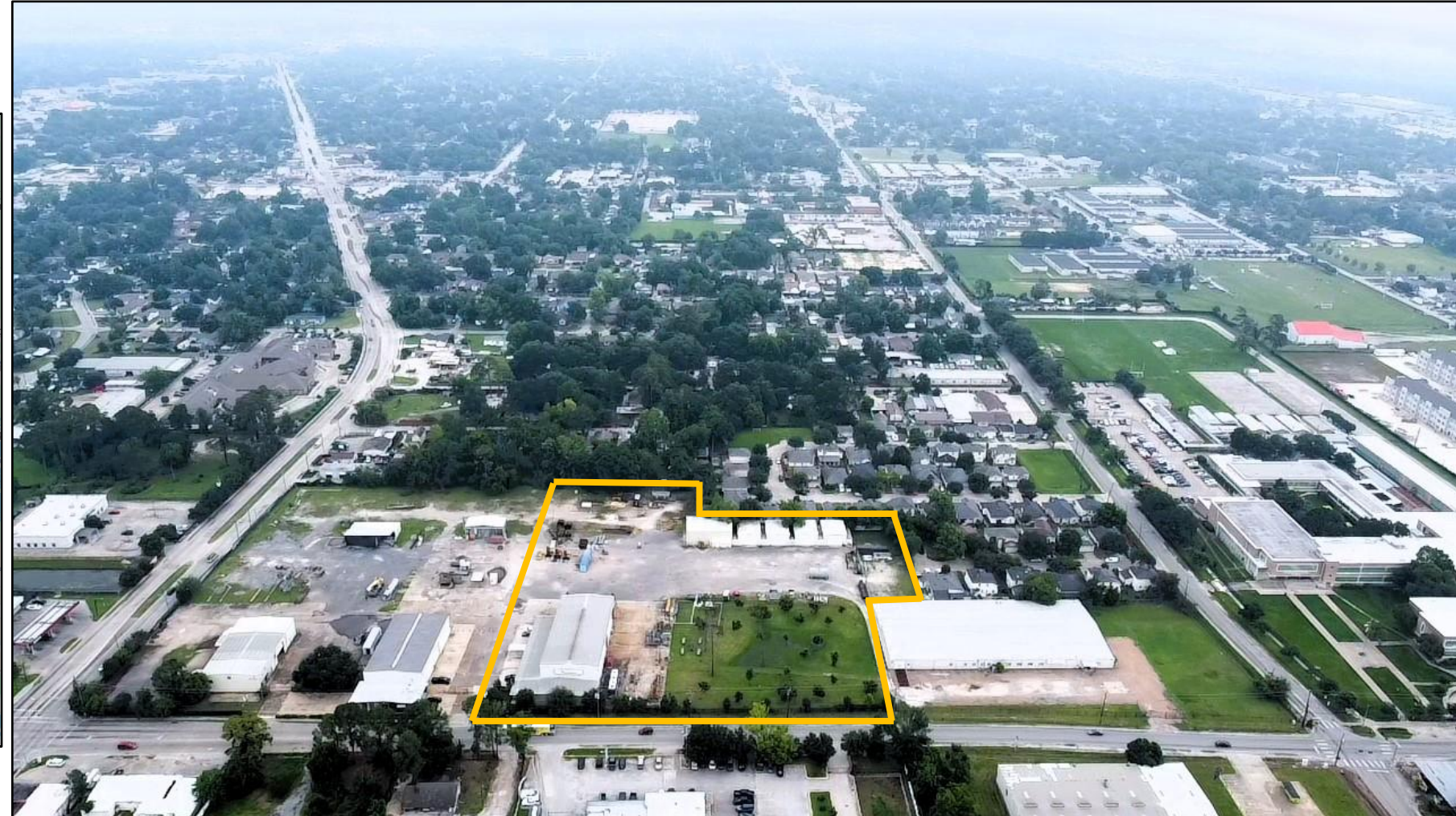
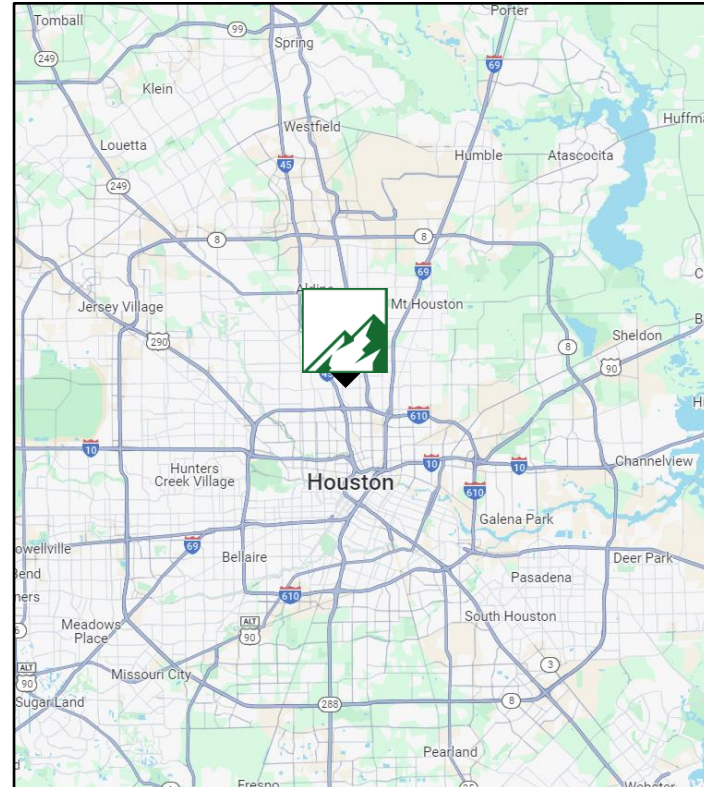


# For Lease | Industrial/IOS | 19,115 SF, 2.57 acres of IOS

111 Berry Rd – Building 3 & Buildings 7-11, Houston, TX 77022



**Exclusively Listed By Alpine:**

**Matthew Franques**

Partner

(936) 689-2558

[mattf@alpinecre.net](mailto:mattf@alpinecre.net)

**Kyle Fischer**

Managing Partner

(281) 627-0834

[kylef@alpinecre.net](mailto:kylef@alpinecre.net)



The information contained herein was obtained from sources believed reliable; however, Alpine Partners, LLC., makes no guarantees, warranties or representations as to the completeness or accuracy thereof. The presentation on this property is submitted subject to errors, omission, changes of price, or conditions, prior to sale or lease or withdrawal without notice.



# For Lease | Industrial/IOS | 19,115 SF, 2.57 acres of IOS

111 Berry Rd – Building 3 & Buildings 7-11, Houston, TX 77022

BUILDINGS CONFIGURATIONS									
Building #	Type	YOC	Size (SF)	Warehouse		Office		% AC	Clear Height (Ft)
				Space	% Warehouse	Space	% Office		
1	Structural Steel Fabrication	1987	6,783	6,409	94.5%	374	5.5%	5.5%	22.8
2	Mid Shop/Main Office	1974	11,274	3,960	35.1%	7,314	64.9%	64.9%	26.7
3	Main Shop	2006	11,467	5,262	45.9%	6,205	54.1%	54.1%	30.6
4	Main Warehouse	1974	30,051	26,581	88.5%	3,470	11.5%	100.0%	17.4
5	Sand Blast Booth	1987	2,300	2,300	100.0%	0	0.0%	0.0%	14
6	Paint Booth Canopy	2006	1,247	1,247	100.0%	0	0.0%	0.0%	24.3
7	Piping/Vessel Ship	2006	2,848	2,848	100.0%	0	0.0%	0.0%	23
8	Flex Warehouse	2006	1,200	1,200	100.0%	0	0.0%	0.0%	18
9	Flex Warehouse	2006	1,200	1,200	100.0%	0	0.0%	0.0%	18
10	Flex Warehouse	2006	1,200	1,200	100.0%	0	0.0%	0.0%	18
11	Flex Warehouse	2006	1,200	1,200	100.0%	0	0.0%	0.0%	18
Total			70,770	53,407	75.5%	17,363	24.5%	62.1%	

Exclusively Listed By Alpine:

**Matthew Franques**

Partner

(936) 689-2558

[mattf@alpinecre.net](mailto:mattf@alpinecre.net)

**Kyle Fischer**

Managing Partner

(281) 627-0834

[kylef@alpinecre.net](mailto:kylef@alpinecre.net)



The information contained herein was obtained from sources believed reliable; however, Alpine Partners, LLC., makes no guarantees, warranties or representations as to the completeness or accuracy thereof. The presentation on this property is submitted subject to errors, omission, changes of price, or conditions, prior to sale or lease or withdrawal without notice.

# For Lease | Industrial/IOS | 19,115 SF, 2.57 acres of IOS

111 Berry Rd – Building 3 & Buildings 7-11, Houston, TX 77022



Exclusively Listed By Alpine:

**Matthew Franques**

Partner

(936) 689-2558

[mattf@alpinecre.net](mailto:mattf@alpinecre.net)

**Kyle Fischer**

Managing Partner

(281) 627-0834

[kylef@alpinecre.net](mailto:kylef@alpinecre.net)

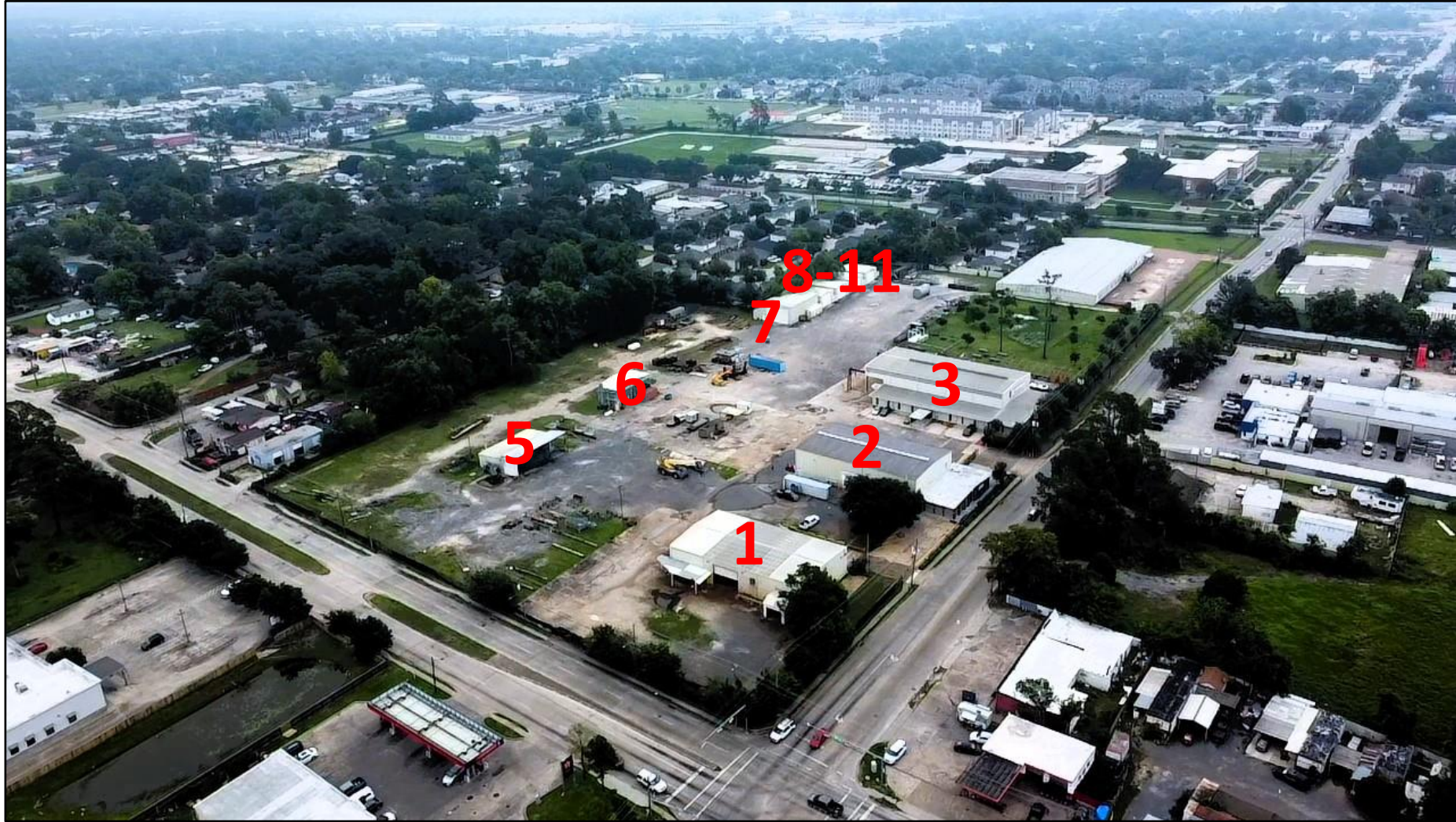


The information contained herein was obtained from sources believed reliable; however, Alpine Partners, LLC., makes no guarantees, warranties or representations as to the completeness or accuracy thereof. The presentation on this property is submitted subject to errors, omission, changes of price, or conditions, prior to sale or lease or withdrawal without notice.



# For Lease | Industrial/IOS | 19,115 SF, 2.57 acres of IOS

111 Berry Rd – Building 3 & Buildings 7-11, Houston, TX 77022



Exclusively Listed By Alpine:

**Matthew Franques**

Partner

(936) 689-2558

[mattf@alpinecre.net](mailto:mattf@alpinecre.net)

**Kyle Fischer**

Managing Partner

(281) 627-0834

[kylef@alpinecre.net](mailto:kylef@alpinecre.net)



The information contained herein was obtained from sources believed reliable; however, Alpine Partners, LLC., makes no guarantees, warranties or representations as to the completeness or accuracy thereof. The presentation on this property is submitted subject to errors, omission, changes of price, or conditions, prior to sale or lease or withdrawal without notice.



# For Lease | Industrial/IOS | 19,115 SF, 2.57 acres of IOS

111 Berry Rd – Building 3 & Buildings 7-11, Houston, TX 77022



**Exclusively Listed By Alpine:**

**Matthew Franques**

Partner

(936) 689-2558

[mattf@alpinecre.net](mailto:mattf@alpinecre.net)

**Kyle Fischer**

Managing Partner

(281) 627-0834

[kylef@alpinecre.net](mailto:kylef@alpinecre.net)



The information contained herein was obtained from sources believed reliable; however, Alpine Partners, LLC., makes no guarantees, warranties or representations as to the completeness or accuracy thereof. The presentation on this property is submitted subject to errors, omission, changes of price, or conditions, prior to sale or lease or withdrawal without notice.



# For Lease | Industrial/IOS | 19,115 SF, 2.57 acres of IOS

111 Berry Rd – Building 3 & Buildings 7-11, Houston, TX 77022



**Exclusively Listed By Alpine:**

**Matthew Franques**

Partner

(936) 689-2558

[mattf@alpinecre.net](mailto:mattf@alpinecre.net)

**Kyle Fischer**

Managing Partner

(281) 627-0834

[kylef@alpinecre.net](mailto:kylef@alpinecre.net)



**ALPINE  
PARTNERS**

The information contained herein was obtained from sources believed reliable; however, Alpine Partners, LLC., makes no guarantees, warranties or representations as to the completeness or accuracy thereof. The presentation on this property is submitted subject to errors, omission, changes of price, or conditions, prior to sale or lease or withdrawal without notice.



# For Lease | Industrial/IOS | 19,115 SF, 2.57 acres of IOS

111 Berry Rd – Building 3 & Buildings 7-11, Houston, TX 77022



Exclusively Listed By Alpine:

**Matthew Franques**

Partner

(936) 689-2558

[mattf@alpinecre.net](mailto:mattf@alpinecre.net)

**Kyle Fischer**

Managing Partner

(281) 627-0834

[kylef@alpinecre.net](mailto:kylef@alpinecre.net)

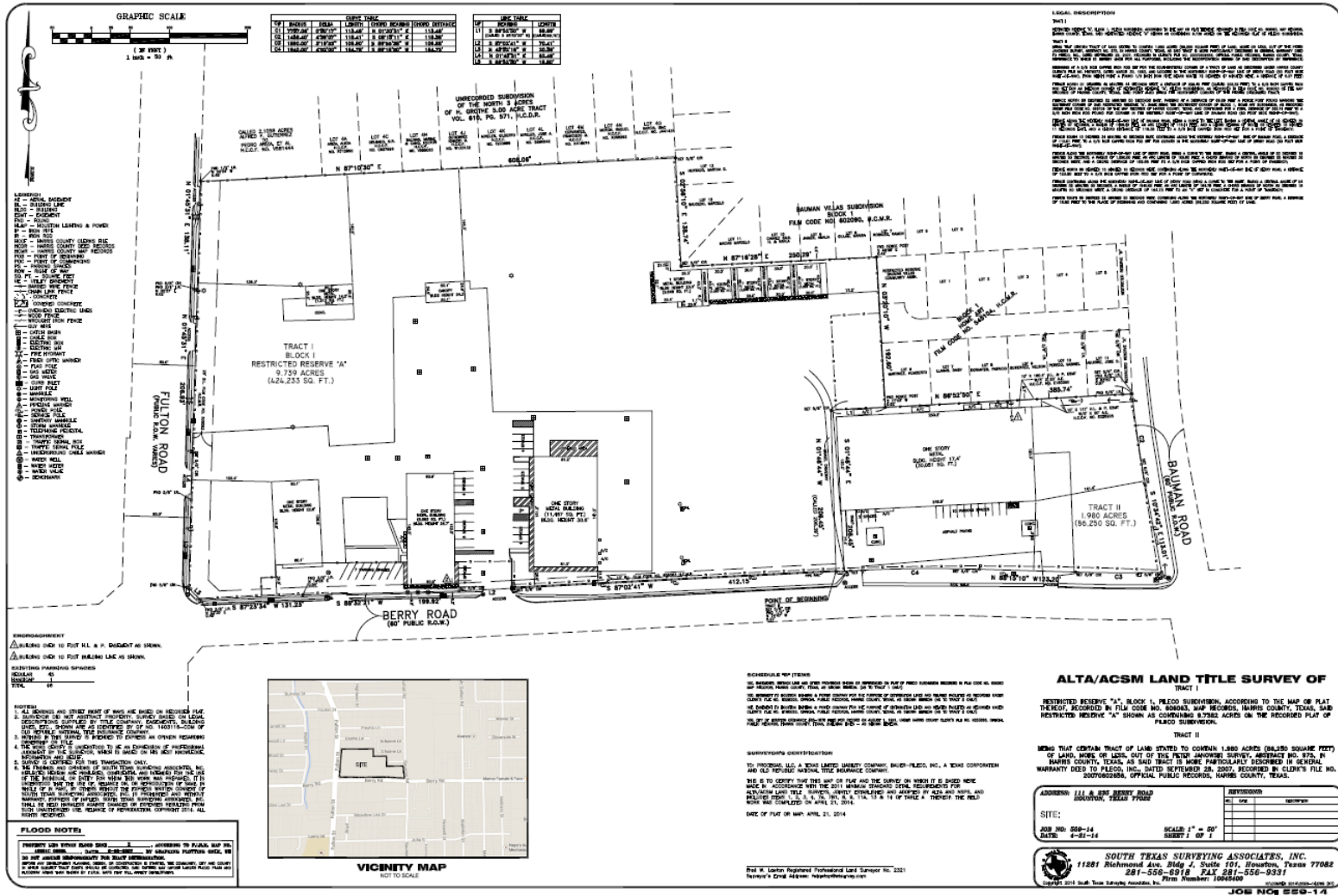


**ALPINE**  
**PARTNERS**

The information contained herein was obtained from sources believed reliable; however, Alpine Partners, LLC., makes no guarantees, warranties or representations as to the completeness or accuracy thereof. The presentation on this property is submitted subject to errors, omission, changes of price, or conditions, prior to sale or lease or withdrawal without notice.

# For Lease | Industrial/IOS | 19,115 SF, 2.57 acres of IOS

111 Berry Rd – Building 3 & Buildings 7-11, Houston, TX 77022



**Exclusively Listed By Alpine:**  
**Matthew Franques** Partner (936) 689-2558 mattf@alpinecre.net  
**Kyle Fischer** Managing Partner (281) 627-0834 kylef@alpinecre.net



The information contained herein was obtained from sources believed reliable; however, Alpine Partners, LLC., makes no guarantees, warranties or representations as to the completeness or accuracy thereof. The presentation on this property is submitted subject to errors, omission, changes of price, or conditions, prior to sale or lease or withdrawal without notice.



# For Lease | Industrial/IOS | 19,115 SF, 2.57 acres of IOS

111 Berry Rd – Building 3 & Buildings 7-11, Houston, TX 77022



## Information About Brokerage Services

Texas law requires all real estate license holders to give the following information about brokerage services to prospective buyers, tenants, sellers and landlords.

11-2-2015



### TYPES OF REAL ESTATE LICENSE HOLDERS:

- A **BROKER** is responsible for all brokerage activities, including acts performed by sales agents sponsored by the broker.
- A **SALES AGENT** must be sponsored by a broker and works with clients on behalf of the broker.

### A BROKER'S MINIMUM DUTIES REQUIRED BY LAW (A client is the person or party that the broker represents):

- Put the interests of the client above all others, including the broker's own interests;
- Inform the client of any material information about the property or transaction received by the broker;
- Answer the client's questions and present any offer to or counter-offer from the client; and
- Treat all parties to a real estate transaction honestly and fairly.

### A LICENSE HOLDER CAN REPRESENT A PARTY IN A REAL ESTATE TRANSACTION:

**AS AGENT FOR OWNER (SELLER/LANDLORD):** The broker becomes the property owner's agent through an agreement with the owner, usually in a written listing to sell or property management agreement. An owner's agent must perform the broker's minimum duties above and must inform the owner of any material information about the property or transaction known by the agent, including information disclosed to the agent or subagent by the buyer or buyer's agent.

**AS AGENT FOR BUYER/TENANT:** The broker becomes the buyer/tenant's agent by agreeing to represent the buyer, usually through a written representation agreement. A buyer's agent must perform the broker's minimum duties above and must inform the buyer of any material information about the property or transaction known by the agent, including information disclosed to the agent by the seller or seller's agent.

**AS AGENT FOR BOTH - INTERMEDIARY:** To act as an intermediary between the parties the broker must first obtain the written agreement of each party to the transaction. The written agreement must state who will pay the broker and, in conspicuous bold or underlined print, set forth the broker's obligations as an intermediary. A broker who acts as an intermediary:

- Must treat all parties to the transaction impartially and fairly;
- May, with the parties' written consent, appoint a different license holder associated with the broker to each party (owner and buyer) to communicate with, provide opinions and advice to, and carry out the instructions of each party to the transaction.
- Must not, unless specifically authorized in writing to do so by the party, disclose:
  - that the owner will accept a price less than the written asking price;
  - that the buyer/tenant will pay a price greater than the price submitted in a written offer; and
  - any confidential information or any other information that a party specifically instructs the broker in writing not to disclose, unless required to do so by law.

**AS SUBAGENT:** A license holder acts as a subagent when aiding a buyer in a transaction without an agreement to represent the buyer. A subagent can assist the buyer but does not represent the buyer and must place the interests of the owner first.

### TO AVOID DISPUTES, ALL AGREEMENTS BETWEEN YOU AND A BROKER SHOULD BE IN WRITING AND CLEARLY ESTABLISH:

- The broker's duties and responsibilities to you, and your obligations under the representation agreement.
- Who will pay the broker for services provided to you, when payment will be made and how the payment will be calculated.

**LICENSE HOLDER CONTACT INFORMATION:** This notice is being provided for information purposes. It does not create an obligation for you to use the broker's services. Please acknowledge receipt of this notice below and retain a copy for your records.

Alpine Partners Real Estate LLC	685165	kylef@alpinecre.net	281-627-0834
Licensed Broker /Broker Firm Name or Primary Assumed Business Name	License No.	Email	Phone
Kyle Fischer	685165	kylef@alpinecre.net	281-627-0834
Designated Broker of Firm	License No.	Email	Phone
Kyle Fischer	685165	kylef@alpinecre.net	281-627-0834
Licensed Supervisor of Sales Agent/ Associate	License No.	Email	Phone
Matthew Franques	752469	mattf@alpinecre.net	936-689-2558
Sales Agent/Associate's Name	License No.	Email	Phone

Buyer/Tenant/Seller/Landlord Initials

Date

Regulated by the Texas Real Estate Commission

Information available at [www.trec.texas.gov](http://www.trec.texas.gov)

IABS 1-0

## Exclusively Listed By Alpine:

**Matthew Franques**

Partner

(936) 689-2558

[mattf@alpinecre.net](mailto:mattf@alpinecre.net)

**Kyle Fischer**

Managing Partner

(281) 627-0834

[kylef@alpinecre.net](mailto:kylef@alpinecre.net)



**ALPINE  
PARTNERS**

The information contained herein was obtained from sources believed reliable; however, Alpine Partners, LLC., makes no guarantees, warranties or representations as to the completeness or accuracy thereof. The presentation on this property is submitted subject to errors, omission, changes of price, or conditions, prior to sale or lease or withdrawal without notice.