

Rare Opportunity in Premier Park City Office



Newpark One

1441 Ute Boulevard
Park City, UT 84098

Space Available: 2,270 SF on Floor 2

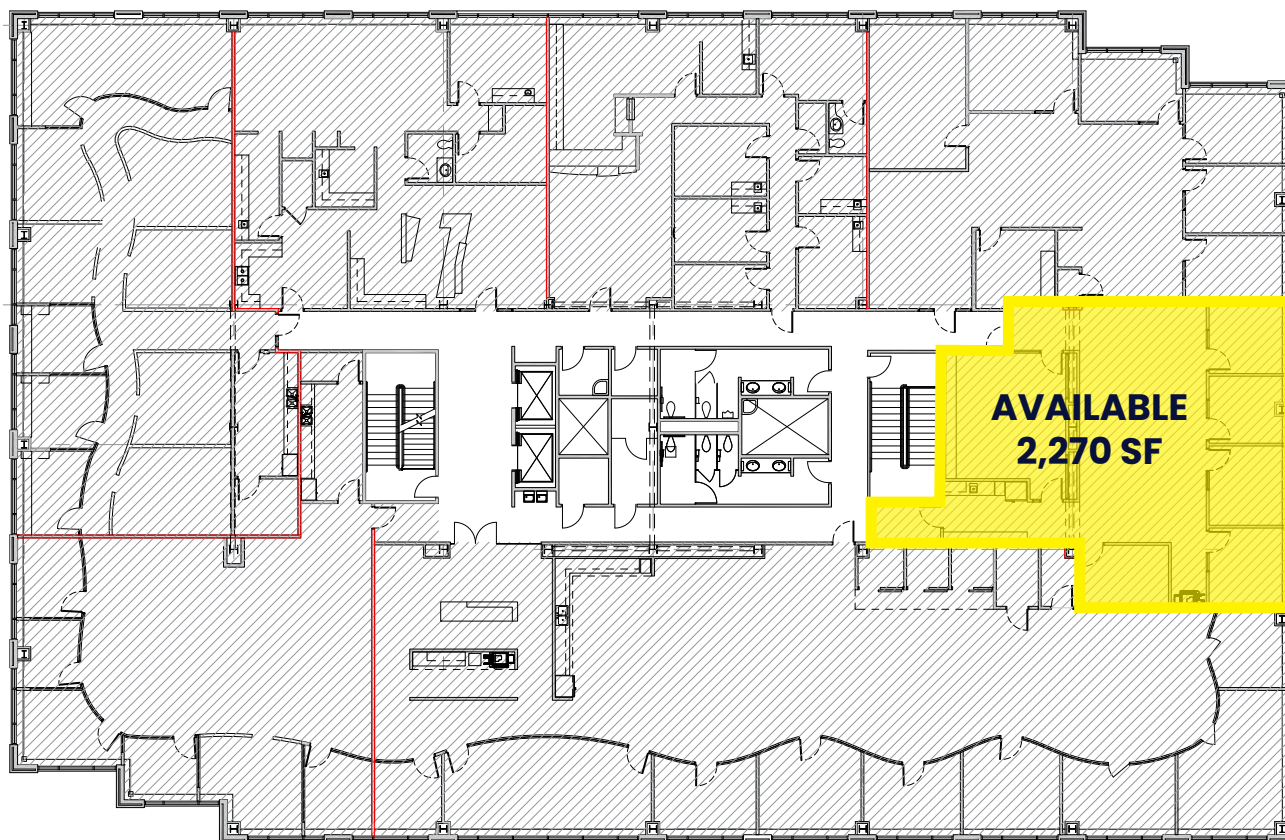
Asking Rent & TI Allowance: Upon Request

Parking Ratio: 3.5/1,000 SF

- + Rare availability in premier, Class A office building, recognized as one of Park City's most exclusive and prestigious properties
- + Tenancy features a blend of national and regional Tenants including Morgan Stanley, Western Steel, and Wells Fargo Advisors
- + Prime location within Newpark Town Center, walkable to countless amenities, including restaurants, entertainment, shops and lodging, as well as walking and biking trails



Floor 2 | Floor Plan







CONTACT

Kurt Turley

626 375 3416

kurt@fortstreetpartners.com



**FORT STREET
PARTNERS**