

FOR LEASE- FOODLAND ANCHORED CENTER

SWQ Federal Blvd & Euclid Ave
San Diego, California



FEATURES

- 4,000 SF Available for lease
- High traffic counts on Hwy 94, Federal Blvd and Euclid Ave
- Strong local grocery anchored center

DEMOGRAPHICS

	1 Mile	2 Mile	3 Mile
2016 Proj Pop:	22,565	115,073	306,867
Daytime Pop:	4,143	14,171	37,112
Avg HH Income:	\$50,577	\$53,444	\$55,063



RETAIL INSITE

Commercial Real Estate

12264 EL CAMINO REAL STE. 202 SAN DIEGO, CA 92130
LIC # 01206760 | T: 858 523 2090 | RETAILINSITE.NET

DON MOSER

Lic.# 00821359
858.523.2087

dmoser@retailinsite.net

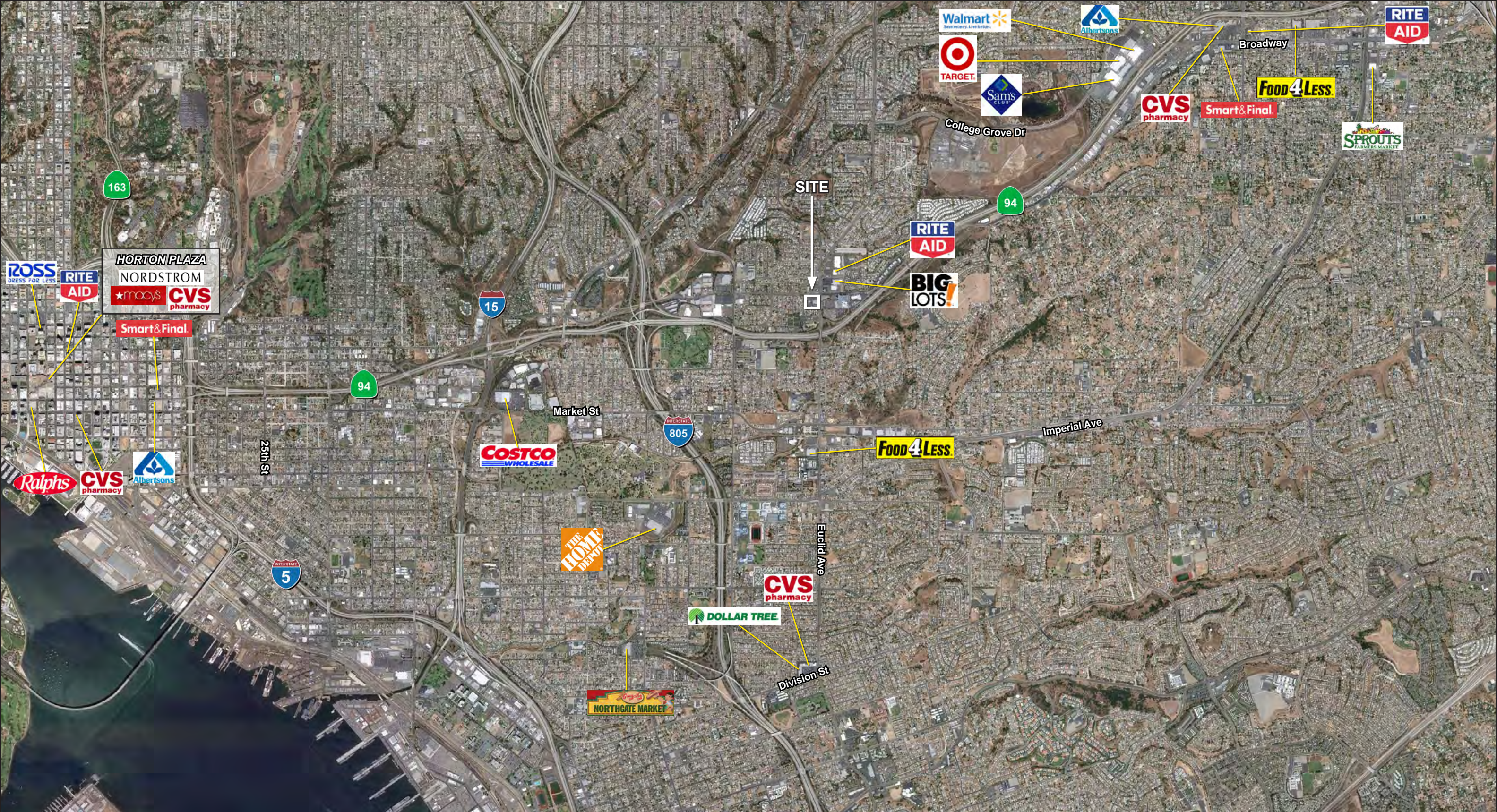
MATT MOSER

Lic.# 01772051
858.523.2096

mmoser@retailinsite.net

A MEMBER OF
CHAINLINKS
RETAIL ADVISORS

The information above has been obtained from sources believed to be reliable. While we do not doubt its accuracy, we have not verified it and make no guarantee, warranty or representation about it. It is your responsibility to independently confirm its accuracy and completeness. Any projections, opinions, assumptions or estimates used are for example only and do not represent the current or future performance of the property. The value of this transaction to you depends on tax and other factors which should be evaluated by your tax, financial and legal advisors. You and your advisors should conduct a careful, independent investigation of the property to determine to your satisfaction the suitability of the property for your needs.



The projects, tenants and site plans illustrated herein are subject to change without notice. You and your advisors should conduct a careful, independent investigation of the information herein to determine to your satisfaction the accuracy. y/files/Aerials 2015/San Diego/Federal x Euclid.pdf



RETAIL INSITE
Commercial Real Estate

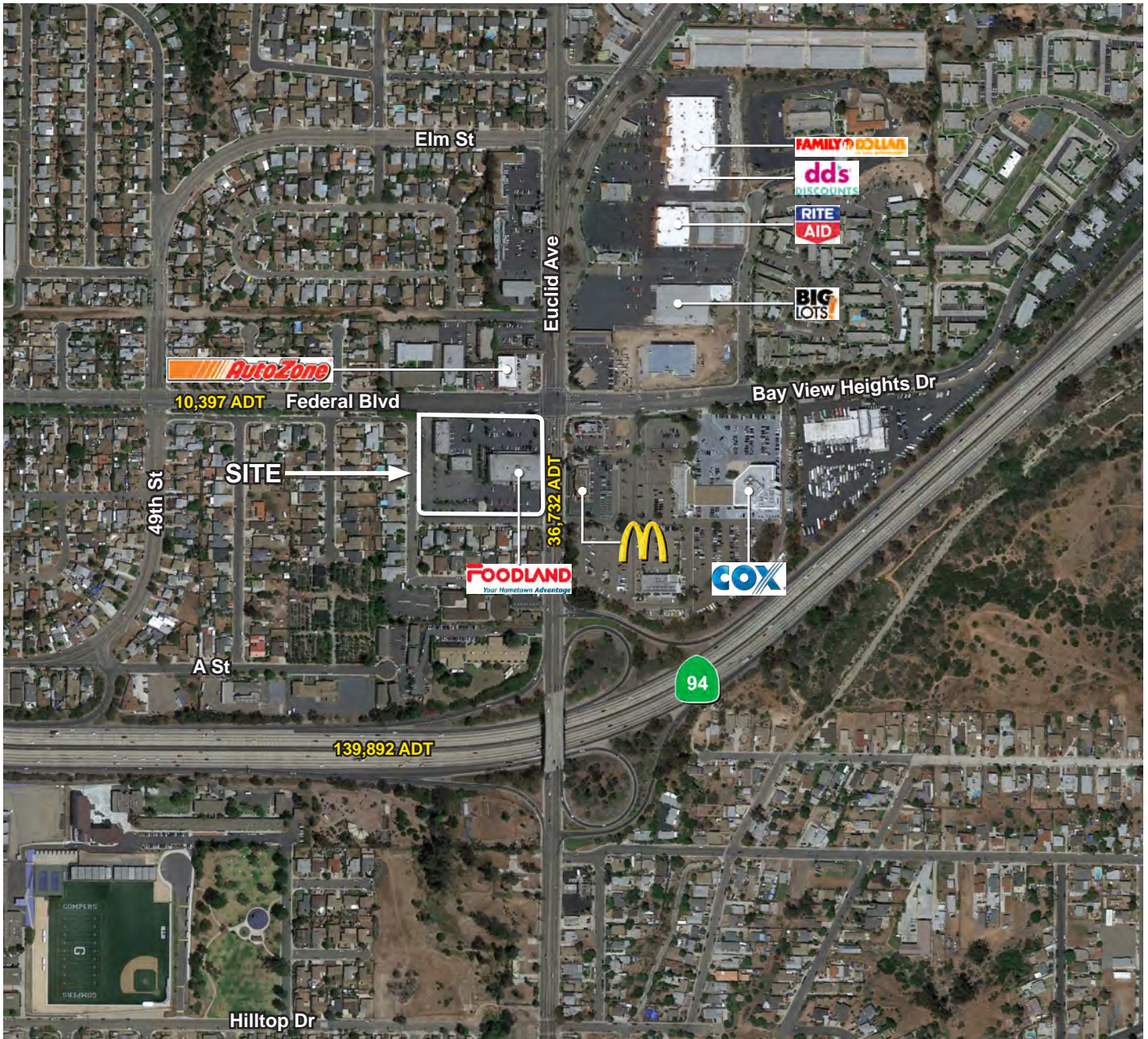
A MEMBER OF
CHAINLINKS
RETAIL ADVISORS

12264 EL CAMINO REAL STE. 202 SAN DIEGO, CA 92130
LIC # 01206760 | T: 858.523.2090 | RETAILINSITE.NET

SAN DIEGO

FOR LEASE- FOODLAND ANCHORED CENTER

SWQ Federal Blvd & Euclid Ave
San Diego, California



RETAIL INSITE
Commercial Real Estate

12264 EL CAMINO REAL STE. 202 SAN DIEGO, CA 92130
LIC # 01206760 | T: 858 523 2090 | RETAILINSITE.NET

DON MOSER

Lic.# 00821359
858.523.2087

dmoser@retailinsite.net

MATT MOSER

Lic.# 01772051
858.523.2096

mmoser@retailinsite.net

A MEMBER OF
CHAINLINKS
RETAIL ADVISORS

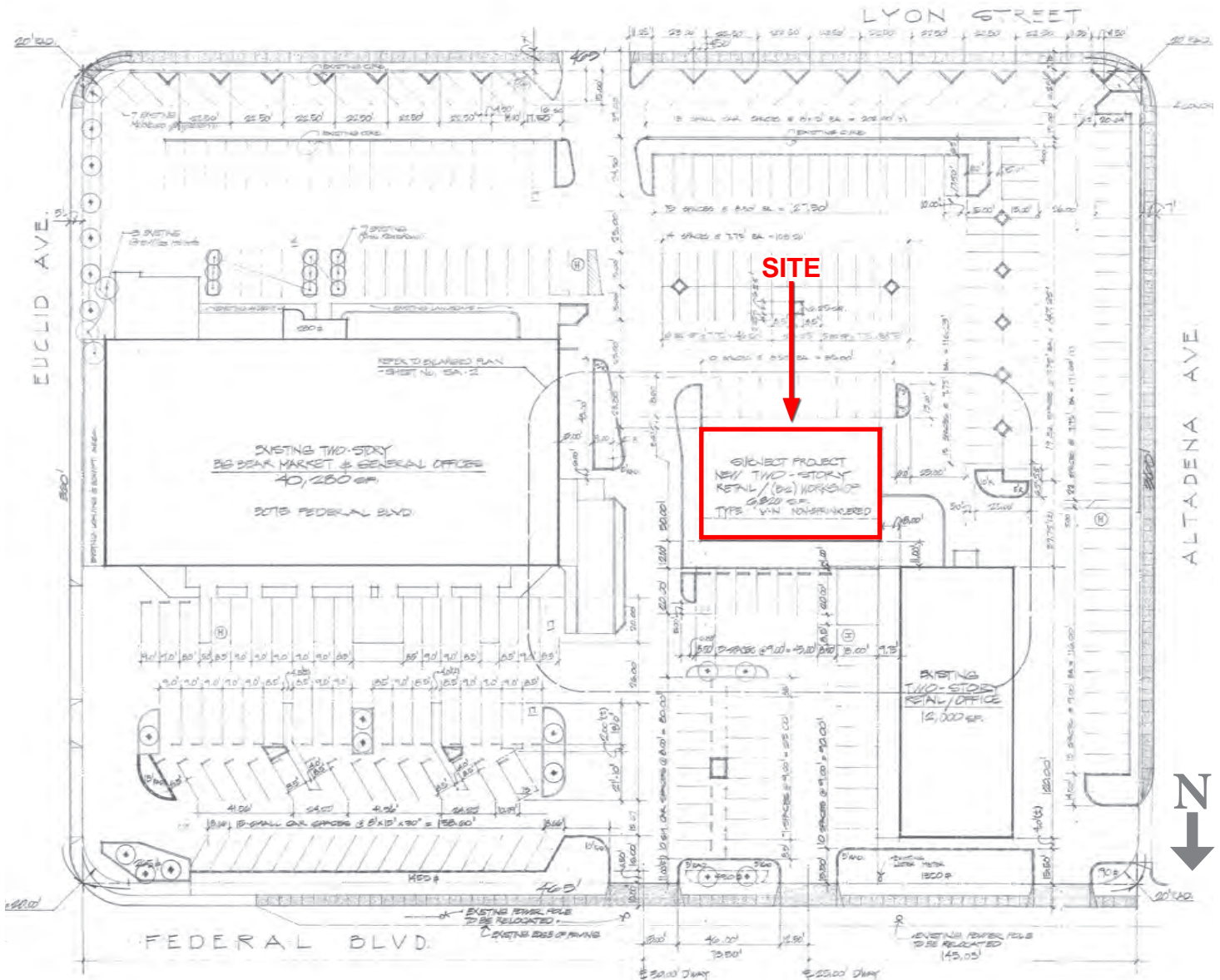
The information above has been obtained from sources believed to be reliable. While we do not doubt its accuracy, we have not verified it and make no guarantee, warranty or representation about it. It is your responsibility to independently confirm its accuracy and completeness. Any projections, opinions, assumptions or estimates used are for example only and do not represent the current or future performance of the property. The value of this transaction to you depends on tax and other factors which should be evaluated by your tax, financial and legal advisors. You and your advisors should conduct a careful, independent investigation of the property to determine to your satisfaction the suitability of the property for your needs.

FOR LEASE- FOODLAND ANCHORED CENTER

SWQ Federal Blvd & Euclid Ave

San Diego, California

SITE PLAN



RETAIL INSITE
Commercial Real Estate

12264 EL CAMINO REAL STE. 202 SAN DIEGO, CA 92130
LIC # 01206760 | T: 858 523 2090 | RETAILINSITE.NET

DON MOSER

Lic.# 00821359
858.523.2087

dmoser@retailinsite.net

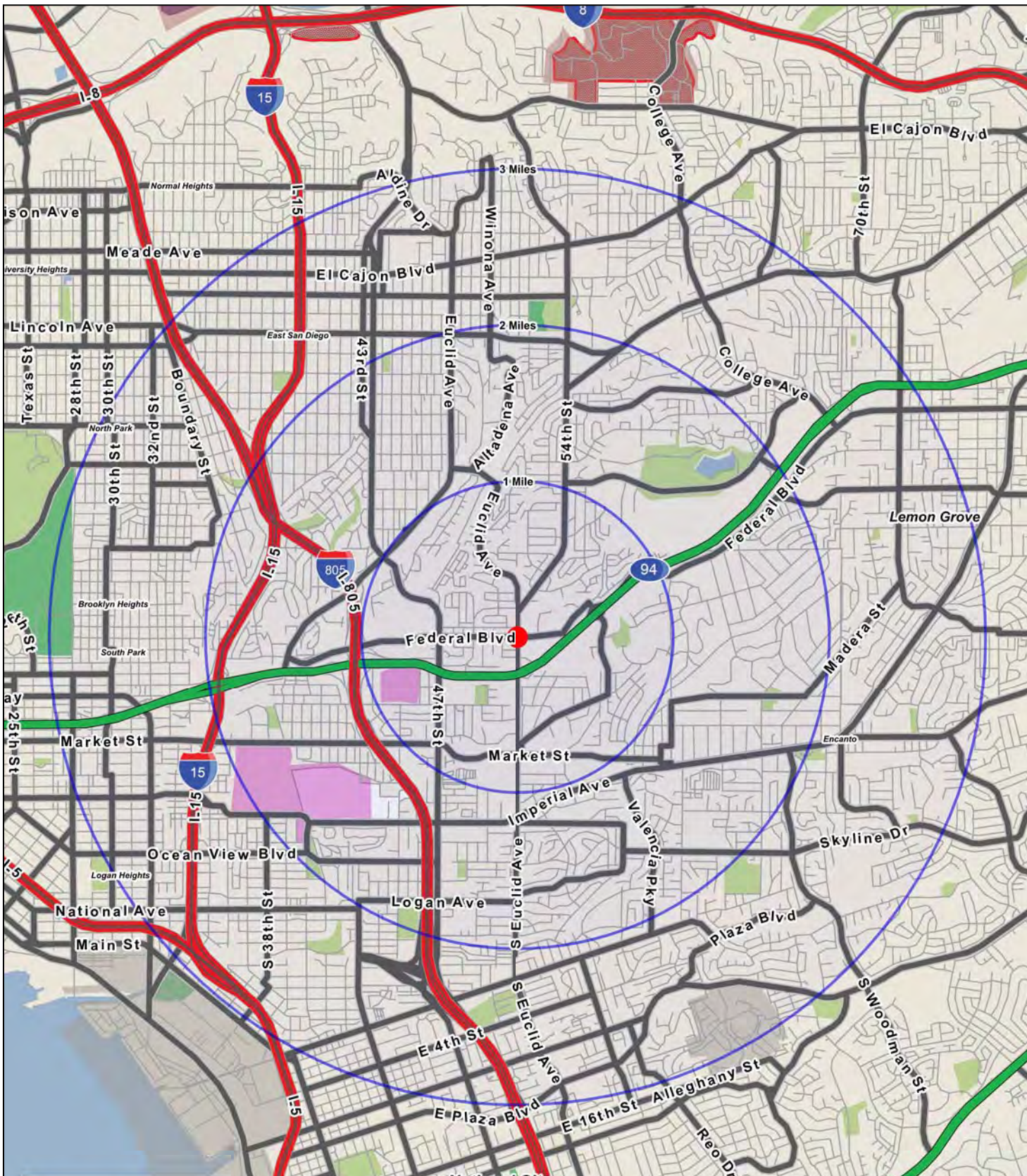
MATT MOSER

Lic.# 01772051
858.523.2096

mmoser@retailinsite.net

A MEMBER OF
CHAINLINKS
RETAIL ADVISORS

The information above has been obtained from sources believed to be reliable. While we do not doubt its accuracy, we have not verified it and make no guarantee, warranty or representation about it. It is your responsibility to independently confirm its accuracy and completeness. Any projections, opinions, assumptions or estimates used are for example only and do not represent the current or future performance of the property. The value of this transaction to you depends on tax and other factors which should be evaluated by your tax, financial and legal advisors. You and your advisors should conduct a careful, independent investigation of the property to determine to your satisfaction the suitability of the property for your needs.



**Federal Blvd & Euclid Ave
San Diego, CA**

EXPANDED PROFILE

2000 - 2010 Census, 2011 Estimates with 2016 Projections
 Calculated using Proportional Block Groups



Lat/Lon: 32.72142/-117.0849

Federal Blvd & Euclid Ave

San Diego, CA

Population (2011)

	1 Mile		2 Miles		3 Miles	
Estimated Population	21,600		107,757		287,476	
Census Population (2010)	21,412		105,895		282,864	
Census Population (2000)	21,433		106,031		286,416	
Projected Population (2016)	22,565		115,073		306,867	
Forecasted Population (2021)	23,193		120,017		318,126	
Historical Annual Growth (2000 to 2010)	-20	-	-136	-	-3,552	-0.1%
Historical Annual Growth (2010 to 2011)	188	0.9%	1,862	1.8%	4,611	1.6%
Projected Annual Growth (2011 to 2016)	965	0.9%	7,316	1.4%	19,391	1.3%
Estimated Population Density	6,881 <i>psm</i>		8,582 <i>psm</i>		10,172 <i>psm</i>	
Trade Area Size	3.14 <i>sq mil</i>		12.56 <i>sq mil</i>		28.26 <i>sq mil</i>	

Households (2011)

Estimated Households	6,320		30,077		87,589	
Census Households (2010)	6,301		29,646		86,414	
Census Households (2000)	6,496		30,126		87,095	
Projected Households (2016)	6,551		31,748		92,517	
Forecasted Households (2021)	6,575		32,607		95,438	
Households with Children	2,666	42.2%	14,276	47.5%	36,901	42.1%
Average Household Size	3.39		3.56		3.26	

Average Household Income (2011)

Est. Average Household Income	\$50,577		\$53,444		\$55,063	
Proj. Average Household Income (2016)	\$60,123		\$63,508		\$65,187	
Average Family Income	\$54,784		\$56,971		\$59,543	

Median Household Income (2011)

Est. Median Household Income	\$44,782		\$45,028		\$45,438	
Proj. Median Household Income (2016)	\$49,742		\$49,963		\$50,014	
Median Family Income	\$51,432		\$48,975		\$50,257	

Per Capita Income (2011)

Est. Per Capita Income	\$15,012		\$15,113		\$17,073	
Proj. Per Capita Income (2016)	\$17,660		\$17,705		\$19,931	
Per Capita Income Est. 5 year change	\$2,648	17.6%	\$2,591	17.1%	\$2,858	16.7%

Other Income (2011)

Est. Median Disposable Income	\$38,566		\$38,542		\$38,727	
Proj. Median Disposable Income (2016)	\$41,948		\$42,150		\$42,017	
Disposable Income Est. 5 year change	\$3,382	8.8%	\$3,608	9.4%	\$3,290	8.5%
Est. Average Household Net Worth	\$444,910		\$456,587		\$455,099	

Daytime Demos (2011)

Total Number of Businesses	320		1,246		4,253	
Total Number of Employees	4,143		14,171		37,112	
Company Headqtrs: Businesses	-	-	-	-	-	-
Company Headqtrs: Employees	-	-	-	-	-	-
Unemployment Rate	8.9%		9.5%		9.4%	
Employee Population per Business	12.9 to 1		11.4 to 1		8.7 to 1	
Residential Population per Business	67.5 to 1		86.5 to 1		67.6 to 1	

This report was produced using data from private and government sources deemed to be reliable. The information herein is provided without representation or warranty.

EXPANDED PROFILE

2000 - 2010 Census, 2011 Estimates with 2016 Projections
 Calculated using Proportional Block Groups



Lat/Lon: 32.72142/-117.0849

Federal Blvd & Euclid Ave

San Diego, CA

Race & Ethnicity (2011)

	1 Mile		2 Miles		3 Miles	
White	6,135	28.4%	33,360	31.0%	107,069	37.2%
Black or African American	5,562	25.7%	21,329	19.8%	42,211	14.7%
American Indian & Alaska Native	130	0.6%	858	0.8%	2,225	0.8%
Asian	3,247	15.0%	15,559	14.4%	42,480	14.8%
Hawaiian & Pacific Islander	143	0.7%	874	0.8%	1,935	0.7%
Other Race	4,950	22.9%	28,765	26.7%	73,951	25.7%
Two or More Races	1,433	6.6%	7,012	6.5%	17,605	6.1%
Not Hispanic or Latino Population	11,400	52.8%	50,273	46.7%	136,156	47.4%
Hispanic or Latino Population	10,201	47.2%	57,484	53.3%	151,320	52.6%
Not of Hispanic Origin Population (2010)	11,389	53.2%	50,330	47.5%	136,487	48.3%
Hispanic Origin Population (2010)	10,023	46.8%	55,565	52.5%	146,378	51.7%
Not Hispanic or Latino Population (2000)	13,640	63.6%	59,963	56.6%	157,410	55.0%
Hispanic or Latino Population (2000)	7,792	36.4%	46,068	43.4%	129,007	45.0%
Not Hispanic or Latino Population (2016)	11,505	51.0%	51,543	44.8%	139,224	45.4%
Hispanic or Latino Population (2016)	11,060	49.0%	63,530	55.2%	167,643	54.6%
Hist. Hispanic Ann Growth (2000 to 2011)	2,408	2.8%	11,417	2.3%	22,313	1.6%
Proj. Hispanic Ann Growth (2011 to 2016)	860	1.7%	6,045	2.1%	16,323	2.2%

Age Distribution (2011)

0 to 4 yrs	1,535	7.1%	7,778	7.2%	20,989	7.3%
5 to 9 yrs	1,427	6.6%	7,238	6.7%	19,255	6.7%
10 to 14 yrs	1,373	6.4%	6,972	6.5%	18,628	6.5%
15 to 19 yrs	1,452	6.7%	7,399	6.9%	19,570	6.8%
20 to 24 yrs	1,675	7.8%	8,429	7.8%	21,899	7.6%
25 to 29 yrs	1,731	8.0%	8,810	8.2%	23,219	8.1%
30 to 34 yrs	1,604	7.4%	8,168	7.6%	21,524	7.5%
35 to 39 yrs	1,531	7.1%	7,793	7.2%	20,527	7.1%
40 to 44 yrs	1,820	8.4%	7,938	7.4%	20,213	7.0%
45 to 49 yrs	1,451	6.7%	7,030	6.5%	20,103	7.0%
50 to 54 yrs	1,498	6.9%	7,270	6.7%	19,375	6.7%
55 to 59 yrs	1,156	5.4%	5,999	5.6%	16,449	5.7%
60 to 64 yrs	940	4.4%	4,895	4.5%	13,240	4.6%
65 to 74 yrs	1,246	5.8%	6,312	5.9%	17,069	5.9%
75 to 84 yrs	782	3.6%	3,930	3.6%	10,545	3.7%
85 yrs plus	382	1.8%	1,803	1.7%	4,878	1.7%
Median Age	34.03 yrs		33.49 yrs		33.83 yrs	

Gender Age Distribution (2011)

Female Population	10,917	50.5%	54,153	50.3%	143,130	49.8%
0 to 19 yrs	2,840	26.0%	14,374	26.5%	37,800	26.4%
20 to 64 yrs	6,703	61.4%	32,880	60.7%	86,921	60.7%
65 yrs plus	1,375	12.6%	6,908	12.8%	18,418	12.9%
Female Median Age	35 yrs		35 yrs		35 yrs	
Male Population	10,685	49.5%	53,605	49.7%	144,349	50.2%
0 to 19 yrs	2,946	27.6%	15,014	28.0%	40,642	28.2%
20 to 64 yrs	6,703	62.7%	33,452	62.4%	89,628	62.1%
65 yrs plus	1,035	9.7%	5,136	9.6%	14,074	9.7%
Male Median Age	32.73 yrs		32.32 yrs		32.84 yrs	

This report was produced using data from private and government sources deemed to be reliable. The information herein is provided without representation or warranty.

EXPANDED PROFILE

2000 - 2010 Census, 2011 Estimates with 2016 Projections
 Calculated using Proportional Block Groups



Lat/Lon: 32.72142/-117.0849

Federal Blvd & Euclid Ave

San Diego, CA

Household Income Distribution (2011)

	1 Mile		2 Miles		3 Miles	
\$200,000 or More	44	0.7%	339	1.1%	1,376	1.6%
\$150,000 to \$199,999	143	2.3%	758	2.5%	2,247	2.6%
\$100,000 to \$149,999	406	6.4%	2,671	8.9%	8,183	9.3%
\$75,000 to \$99,999	790	12.5%	3,450	11.5%	9,753	11.1%
\$50,000 to \$74,999	1,447	22.9%	5,898	19.6%	15,523	17.7%
\$35,000 to \$49,999	1,080	17.1%	4,876	16.2%	14,230	16.2%
\$25,000 to \$34,999	618	9.8%	3,482	11.6%	10,290	11.7%
\$15,000 to \$24,999	778	12.3%	4,122	13.7%	12,499	14.3%
\$0 to \$14,999	1,016	16.1%	4,486	14.9%	13,493	15.4%
\$35,000+	3,908	61.8%	17,993	59.8%	51,312	58.6%
\$75,000+	1,381	21.9%	7,219	24.0%	21,559	24.6%

Housing (2011)

	1 Mile		2 Miles		3 Miles	
Total Housing Units	6,679		31,811		93,065	
Housing Units, Occupied	6,318	94.6%	30,077	94.6%	87,588	94.1%
<i>Housing Units, Owner-Occupied</i>	3,469	54.9%	15,034	50.0%	37,474	42.8%
<i>Housing Units, Renter-Occupied</i>	2,850	45.1%	15,043	50.0%	50,114	57.2%
Housing Units, Vacant	361	5.4%	1,734	5.4%	5,477	5.9%
Median Years in Residence	4 yrs		4 yrs		3 yrs	

Marital Status (2011)

	1 Mile		2 Miles		3 Miles	
Never Married	5,927	34.3%	31,068	36.2%	83,867	36.7%
Now Married	7,133	41.3%	34,950	40.7%	92,391	40.4%
Separated	1,462	8.5%	7,350	8.6%	19,316	8.5%
Widowed	914	5.3%	4,477	5.2%	12,071	5.3%
Divorced	1,828	10.6%	7,956	9.3%	20,941	9.2%

Household Type (2011)

	1 Mile		2 Miles		3 Miles	
Population Family	19,408	89.9%	97,209	90.2%	247,045	85.9%
Population Non-Family	2,035	9.4%	9,911	9.2%	38,066	13.2%
Population Group Qtrs	157	0.7%	637	0.6%	2,364	0.8%
Family Households	4,504	71.3%	22,503	74.8%	59,664	68.1%
<i>Married Couple With Children</i>	1,467	20.6%	8,419	24.1%	21,051	22.8%
<i>Average Family Household Size</i>	4.3		4.3		4.1	
Non-Family Households	1,816	28.7%	7,574	25.2%	27,927	31.9%

Household Size (2011)

	1 Mile		2 Miles		3 Miles	
1 Person Household	1,533	24.3%	5,897	19.6%	20,870	23.8%
2 Person Households	1,481	23.4%	6,556	21.8%	20,727	23.7%
3 Person Households	868	13.7%	4,583	15.2%	12,725	14.5%
4 Person Households	920	14.6%	4,806	16.0%	13,308	15.2%
5 Person Households	676	10.7%	3,628	12.1%	9,077	10.4%
6+ Person Households	841	13.3%	4,608	15.3%	10,883	12.4%

Household Vehicles (2011)

	1 Mile		2 Miles		3 Miles	
Total Vehicles Available	12,255		57,939		158,909	
Household: 0 Vehicles Available	452	7.2%	2,504	8.3%	8,723	10.0%
Household: 1 Vehicles Available	2,320	36.7%	10,273	34.2%	31,600	36.1%
Household: 2+ Vehicles Available	3,547	56.1%	17,305	57.5%	47,267	54.0%
Average Vehicles Per Household	1.9		1.9		1.8	

This report was produced using data from private and government sources deemed to be reliable. The information herein is provided without representation or warranty.

EXPANDED PROFILE

2000 - 2010 Census, 2011 Estimates with 2016 Projections
 Calculated using Proportional Block Groups



Lat/Lon: 32.72142/-117.0849

Federal Blvd & Euclid Ave

San Diego, CA

Labor Force (2011)

	1 Mile		2 Miles		3 Miles	
Est. Labor: Population Age 16+	16,972		84,294		224,624	
Est. Civilian Employed	8,415	49.6%	41,516	49.3%	113,436	50.5%
Est. Civilian Unemployed	1,511	8.9%	7,999	9.5%	21,133	9.4%
Est. in Armed Forces	378	2.2%	1,596	1.9%	3,993	1.8%
Est. not in Labor Force	6,667	39.3%	33,183	39.4%	86,062	38.3%

Occupation (2000)

	1 Mile		2 Miles		3 Miles	
Occupation: Population Age 16+	7,379		35,537		103,375	
Mgmt, Business, & Financial Operations	619	8.4%	2,547	7.2%	8,139	7.9%
Professional and Related	1,054	14.3%	4,494	12.6%	14,953	14.5%
Service	1,742	23.6%	9,033	25.4%	26,022	25.2%
Sales and Office	2,029	27.5%	9,213	25.9%	26,275	25.4%
Farming, Fishing, and Forestry	37	0.5%	196	0.6%	513	0.5%
Construct, Extraction, & Maintenance	742	10.0%	4,294	12.1%	11,466	11.1%
Production, Transp. & Material Moving	1,157	15.7%	5,760	16.2%	16,007	15.5%
Percent White Collar Workers	50.2%		45.7%		47.8%	
Percent Blue Collar Workers	49.8%		54.3%		52.2%	

Consumer Expenditure (2011)

	1 Mile		2 Miles		3 Miles	
Total Household Expenditure	\$278 M		\$1.37 B		\$4.06 B	
Total Non-Retail Expenditures	\$160 M	57.5%	\$788 M	57.5%	\$2.33 B	57.4%
Total Retail Expenditures	\$118 M	42.5%	\$582 M	42.5%	\$1.73 B	42.6%
Apparel	\$13.5 M	4.8%	\$66.3 M	4.8%	\$196 M	4.8%
Contributions	\$9.47 M	3.4%	\$47.1 M	3.4%	\$141 M	3.5%
Education	\$6.18 M	2.2%	\$31.3 M	2.3%	\$94.3 M	2.3%
Entertainment	\$15.4 M	5.5%	\$75.9 M	5.5%	\$225 M	5.5%
Food And Beverages	\$43.8 M	15.7%	\$215 M	15.7%	\$634 M	15.6%
Furnishings And Equipment	\$11.8 M	4.3%	\$58.4 M	4.3%	\$173 M	4.3%
Gifts	\$6.80 M	2.4%	\$34.0 M	2.5%	\$102 M	2.5%
Health Care	\$17.5 M	6.3%	\$85.3 M	6.2%	\$253 M	6.2%
Household Operations	\$9.50 M	3.4%	\$47.4 M	3.5%	\$141 M	3.5%
Miscellaneous Expenses	\$4.67 M	1.7%	\$23.0 M	1.7%	\$68.3 M	1.7%
Personal Care	\$4.08 M	1.5%	\$20.0 M	1.5%	\$59.3 M	1.5%
Personal Insurance	\$2.69 M	1.0%	\$13.4 M	1.0%	\$40.0 M	1.0%
Reading	\$901 K	0.3%	\$4.42 M	0.3%	\$13.2 M	0.3%
Shelter	\$53.2 M	19.1%	\$263 M	19.2%	\$779 M	19.2%
Tobacco	\$1.98 M	0.7%	\$9.61 M	0.7%	\$28.2 M	0.7%
Transportation	\$56.4 M	20.3%	\$277 M	20.2%	\$815 M	20.1%
Utilities	\$20.3 M	7.3%	\$99.4 M	7.3%	\$294 M	7.2%

Educational Attainment (2011)

	1 Mile		2 Miles		3 Miles	
Adult Population (25 Years or Older)	14,141		69,940		187,137	
Elementary (0 to 8)	1,917	13.6%	10,914	15.6%	29,067	15.5%
Some High School (9 to 11)	1,866	13.2%	9,558	13.7%	23,393	12.5%
High School Graduate (12)	3,617	25.6%	17,556	25.1%	44,689	23.9%
Some College (13 to 16)	3,049	21.6%	13,728	19.6%	36,482	19.5%
Associate Degree Only	885	6.3%	5,014	7.2%	12,843	6.9%
Bachelor Degree Only	2,037	14.4%	9,106	13.0%	27,436	14.7%
Graduate Degree	770	5.4%	4,063	5.8%	13,228	7.1%

This report was produced using data from private and government sources deemed to be reliable. The information herein is provided without representation or warranty.

EXPANDED PROFILE

2000 - 2010 Census, 2011 Estimates with 2016 Projections
 Calculated using Proportional Block Groups



Lat/Lon: 32.72142/-117.0849

Federal Blvd & Euclid Ave

San Diego, CA

Units In Structure (2000)

	1 Mile		2 Miles		3 Miles	
1 Detached Unit	3,741	55.9%	17,161	55.2%	45,235	50.3%
1 Attached Unit	548	8.2%	3,129	10.1%	7,565	8.4%
2 to 4 Units	559	8.3%	2,830	9.1%	9,473	10.5%
5 to 9 Units	659	9.8%	2,547	8.2%	10,762	12.0%
10 to 19 Units	257	3.8%	1,693	5.4%	6,660	7.4%
20 to 49 Units	205	3.1%	1,198	3.9%	4,294	4.8%
50 or more Units	338	5.0%	1,414	4.6%	4,582	5.1%
Mobile Home or Trailer	379	5.7%	1,068	3.4%	1,349	1.5%
Other Structure	12	0.2%	25	0.1%	41	-

Homes Built By Year

	1 Mile		2 Miles		3 Miles	
1999 to 2000	30	0.4%	170	0.5%	521	0.6%
1995 to 1998	49	0.7%	734	2.4%	1,790	2.0%
1990 to 1994	159	2.4%	1,035	3.3%	3,017	3.4%
1980 to 1989	831	12.4%	4,463	14.4%	13,442	14.9%
1970 to 1979	1,443	21.6%	5,720	18.4%	16,476	18.3%
1960 to 1969	1,198	17.9%	5,361	17.3%	14,849	16.5%
1950 to 1959	2,230	33.3%	8,549	27.5%	20,203	22.5%
Built Before 1949	757	11.3%	5,037	16.2%	19,669	21.9%

Home Values (2000)

	1 Mile		2 Miles		3 Miles	
\$1,000,000 or More	10	0.3%	27	0.2%	48	0.2%
\$500,000 to \$999,999	11	0.4%	31	0.2%	182	0.6%
\$400,000 to \$499,999	-	-	16	0.1%	229	0.7%
\$300,000 to \$399,999	36	1.2%	163	1.3%	874	2.7%
\$200,000 to \$299,999	99	3.3%	654	5.2%	3,804	11.9%
\$150,000 to \$199,999	834	27.9%	3,489	27.8%	10,353	32.3%
\$100,000 to \$149,999	1,607	53.7%	6,184	49.2%	12,424	38.8%
\$70,000 to \$99,999	334	11.2%	1,564	12.4%	3,152	9.8%
\$50,000 to \$69,999	13	0.4%	190	1.5%	444	1.4%
\$25,000 to \$49,999	-	-	73	0.6%	243	0.8%
\$0 to \$24,999	49	1.7%	170	1.4%	263	0.8%
Owner Occupied Median Home Value	\$137,748		\$137,147		\$155,324	
Renter Occupied Median Rent	\$589		\$574		\$566	

Transportation To Work (2000)

	1 Mile		2 Miles		3 Miles	
Drive to Work Alone	5,542	71.5%	24,958	67.6%	72,411	67.8%
Drive to Work in Carpool	1,409	18.2%	7,637	20.7%	20,005	18.7%
Travel to Work - Public Transportation	468	6.0%	2,480	6.7%	8,268	7.7%
Drive to Work on Motorcycle	-	-	33	0.1%	257	0.2%
Walk or Bicycle to Work	66	0.8%	590	1.6%	2,233	2.1%
Other Means	74	0.9%	418	1.1%	1,094	1.0%
Work at Home	195	2.5%	807	2.2%	2,607	2.4%

Travel Time (2000)

	1 Mile		2 Miles		3 Miles	
Travel to Work in 14 Minutes or Less	1,514	20.0%	6,125	17.0%	18,646	17.9%
Travel to Work in 14 to 29 Minutes	3,796	50.2%	16,882	46.7%	48,753	46.8%
Travel to Work in 30 to 59 Minutes	1,887	25.0%	10,516	29.1%	29,565	28.4%
Travel to Work in 60 Minutes or More	363	4.8%	2,594	7.2%	7,304	7.0%
Average Travel Time to Work	22.1 mins		25.4 mins		25.0 mins	

This report was produced using data from private and government sources deemed to be reliable. The information herein is provided without representation or warranty.