

PARKWAY PROFESSIONAL CENTER

13 & 17 Western Maryland Parkway
Hagerstown, MD 21740

Medical Office For Lease



Leasing Information:
410.659.1234

Brent Prossner
410.659.1234 x122
bprossner@lpc.com

Kyle Bell
410.659.1234 x117
kbell@lpc.com

Lincoln

Lincoln Property Company
300 W Pratt Street
Baltimore, MD 21201

www.lpc.com

PARKWAY PROFESSIONAL CENTER

Office For Lease

13 & 17 Western Maryland Parkway | Hagerstown, MD 21740



Property Highlights

- Two-building, class A medical campus with easy access to US-40 and I-81
- 71,327 total SF campus
- Existing tenant roster includes WVU Medicine and Center for Advanced Orthopaedics
- Fully built-out, 3,960 SF Imaging suite available
- Monument signage available
- Abundant, free surface parking available
- Tenant Improvement Allowance Available

Availabilities

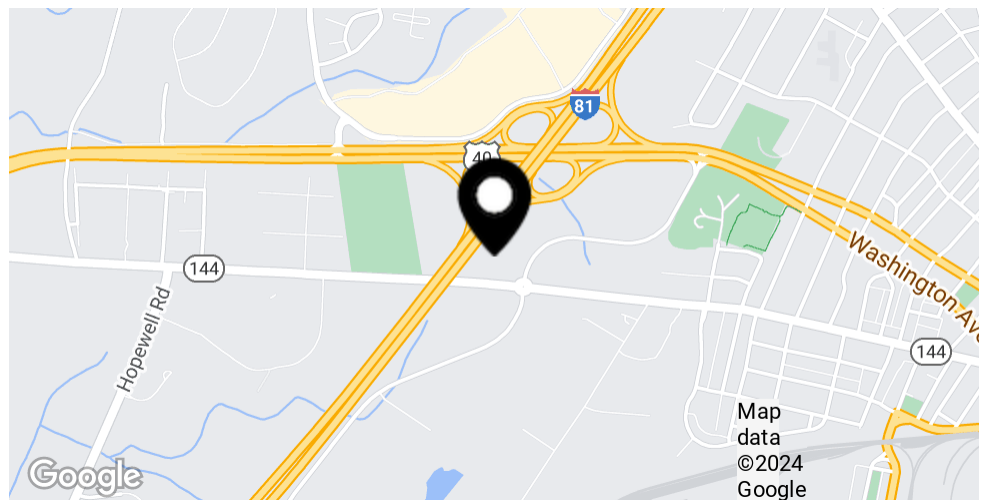
17: Suite 100

SF

3,960 SF

Date Available

Immediately



Brent Prossner

410.659.1234 x122
bprossner@lpc.com

Kyle Bell

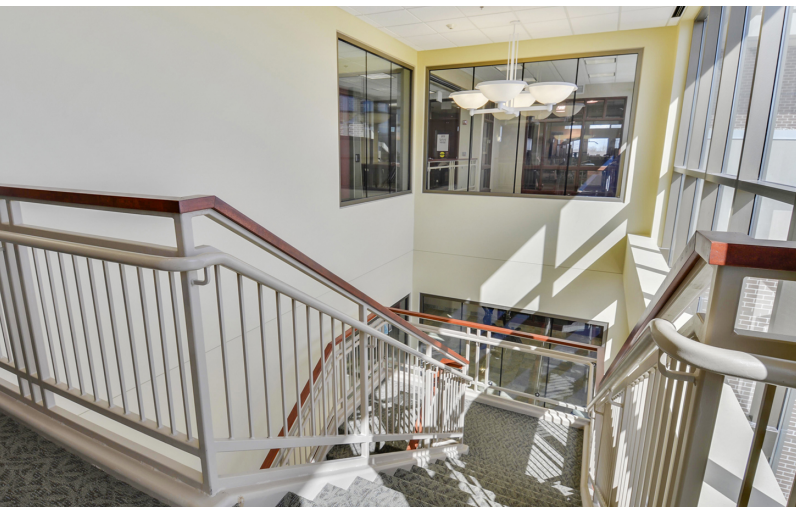
410.659.1234 x117
kbell@lpc.com

Lincoln

PARKWAY PROFESSIONAL CENTER

Class A Finishes

13 & 17 Western Maryland Parkway | Hagerstown, MD 21740



Brent Prossner
410.659.1234 x122
bprossner@lpc.com

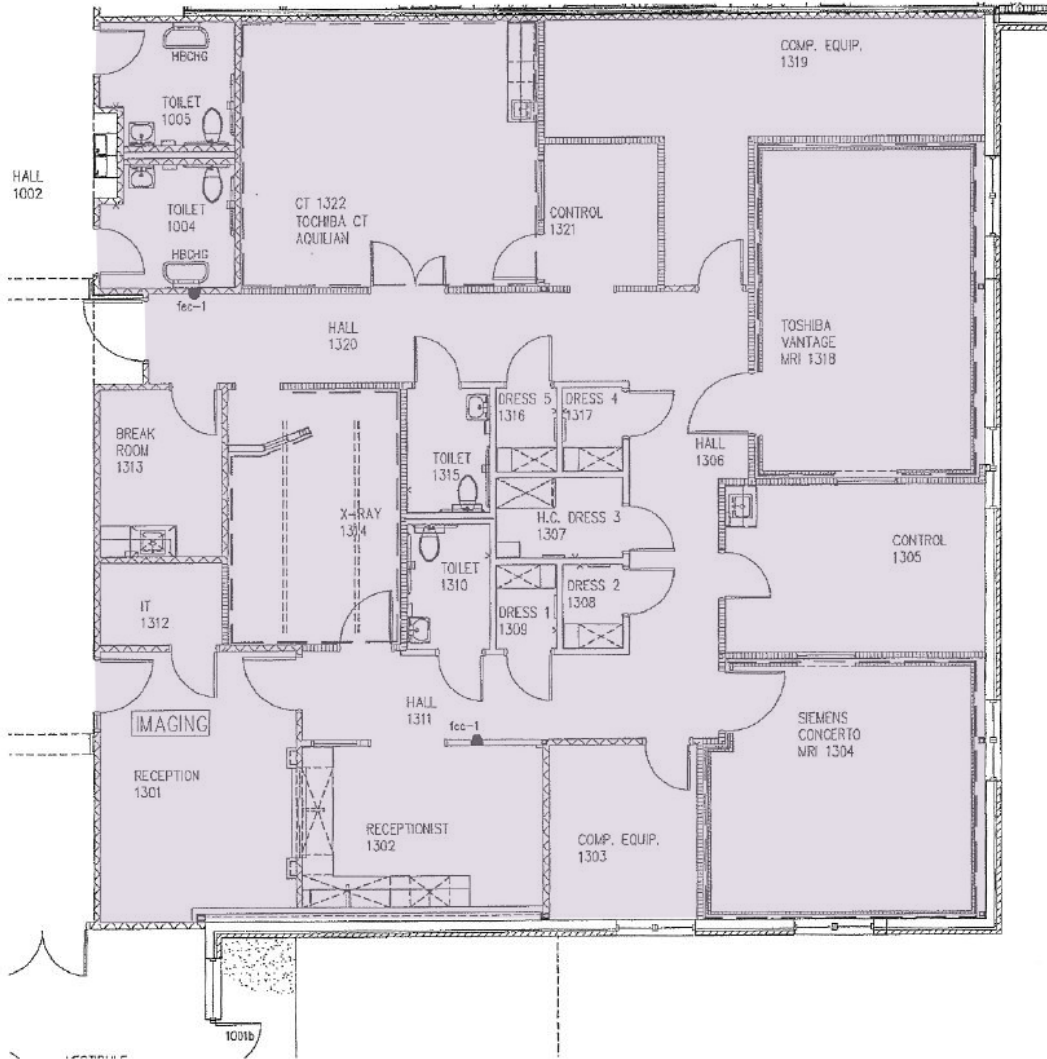
Kyle Bell
410.659.1234 x117
kbell@lpc.com

Lincoln

PARKWAY PROFESSIONAL CENTER

17: Suite 100

13 & 17 Western Maryland Parkway | Hagerstown, MD 21740



Suite	Size	Description
■ 17: Suite 100	3,960 SF	Available Immediately

Brent Prossner

410.659.1234 x122
bprossner@lpc.com

Kyle Bell

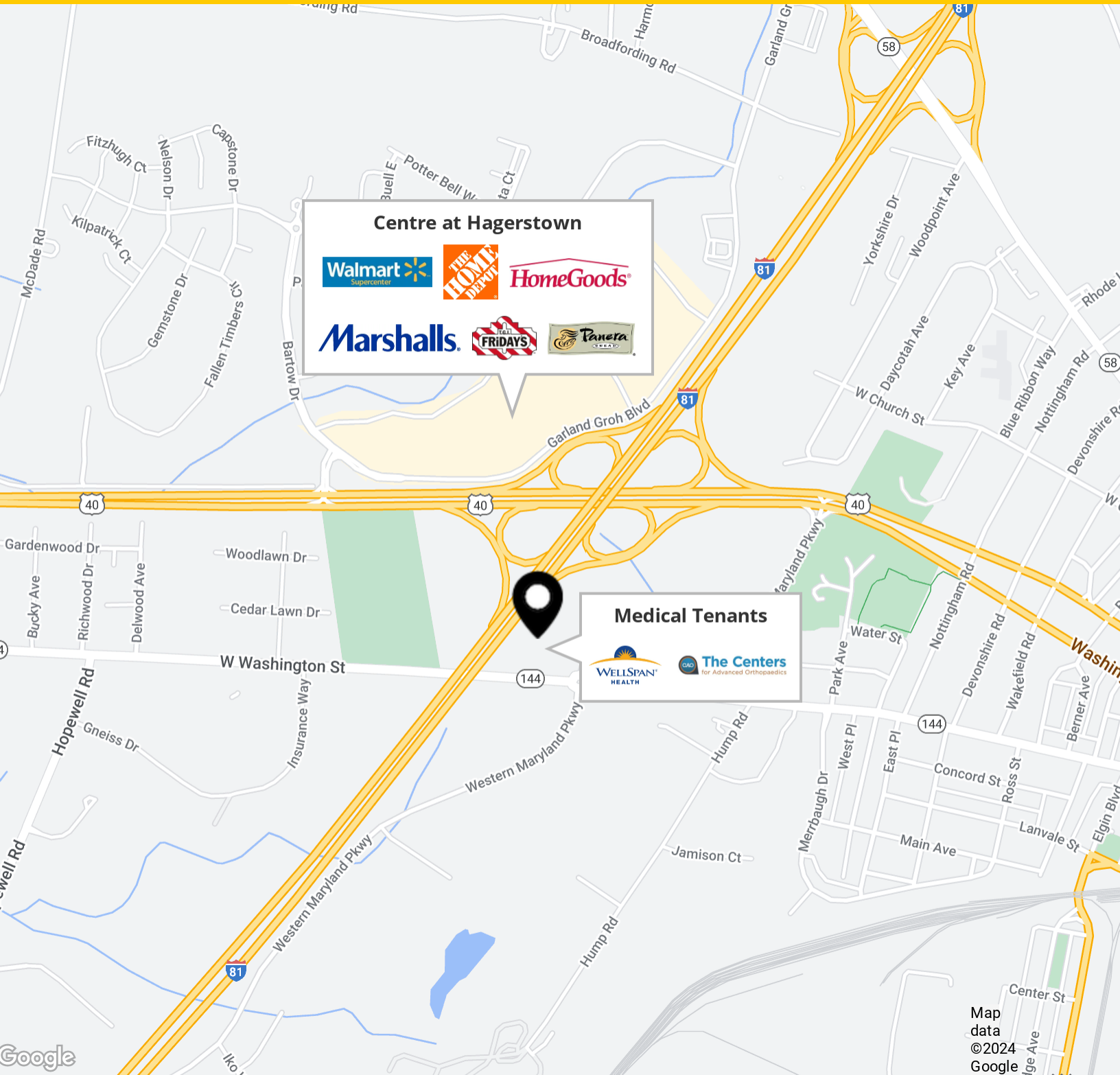
410.659.1234 x117
kbell@lpc.com

Lincoln

PARKWAY PROFESSIONAL CENTER

Nearby Amenities

13 & 17 Western Maryland Parkway | Hagerstown, MD 21740



Brent Prossner
410.659.1234 x122
bprossner@lpc.com

Kyle Bell
410.659.1234 x117
kbell@lpc.com

Lincoln



PARKWAY PROFESSIONAL CENTER

13 & 17 Western Maryland Parkway
Hagerstown, MD 21740

Leasing Information:
410.659.1234

Brent Prossner
410.659.1234 x122
bprossner@lpc.com

Kyle Bell
410.659.1234 x117
kbell@lpc.com

Lincoln

Lincoln Property Company
300 W Pratt Street
Baltimore, MD 21201

www.lpc.com