

# BREA CENTRAL BUSINESS PARK

500-590 W Central Avenue, Brea, CA

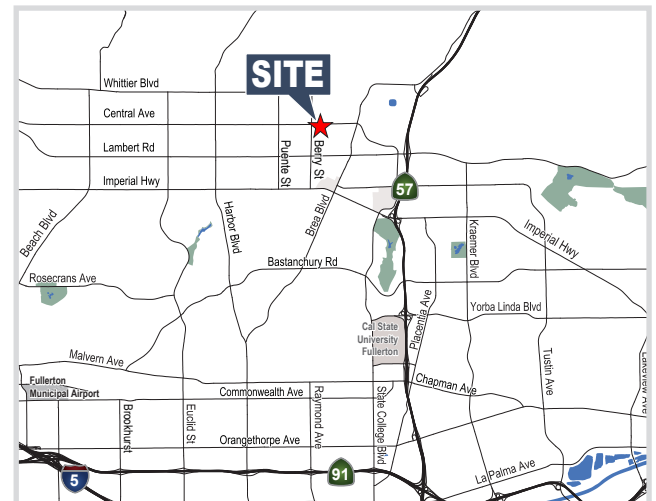
684-690 N Berry Street, Brea, CA



**±2,943 - ±25,942 SQUARE FEET INDUSTRIAL | R&D | OFFICES FOR LEASE**

## PROPERTY FEATURES

- Quality Business Park Environment
- Recent Building Renovations
- Light Industrial, R&D, and Office Use
- Excellent Truck Access
- 57 Freeway Access
- Close Proximity to Retail and Restaurants
- 20-80% Office Build Out
- 14' Warehouse Clearance
- Warehouse Fire Sprinklers



### STAN KWAK

Senior Vice President  
skwak@voitco.com  
714.935.2327  
Lic. #01824776

### BARRY WALSH

Vice President  
bwalshe@voitco.com  
714.935.2309  
Lic. #01213417

### BREN BLOWER

Associate  
bblower@voitco.com  
714.935.2323  
Lic. #02194808

### SELDEN MCKNIGHT

Vice President  
smcknight@voitco.com  
714.935.2323  
Lic. #02027919

**Voit**

REAL ESTATE SERVICES

2400 E. Katella Avenue, Suite 750, Anaheim, CA 92806 • 714.978.7880 • 714.978.9431 Fax

Licensed as Real Estate Salespersons by the CA Bar of Real Estate. The information contained herein has been obtained from sources we deem reliable. While we have no reason to doubt its accuracy, we do not guarantee it. ©2021 Voit Real Estate Services, Inc. All Rights Reserved. License # 01991785.

www.VoitCo.com

# BREA CENTRAL BUSINESS PARK

500-590 W Central Avenue, Brea, CA



## SITE PLAN



Address	Unit	Total Size SF	Lease Rate PSF	Comments
510 Central Ave	B	±4,028	\$1.55 MG	Available May 1, 2025
590 Central Ave	A	±4,329	\$1.55 MG	Available Now; Can Combine with Unit B
590 Central Ave	B	±2,943	\$1.55 MG	Available Now; Can Combine with Unit A
590 Central Ave	I	±2,992	\$1.55 MG	Available Now
684 N Berry St	C	±4,900	\$1.55 MG	Available Now
690 N Berry St	B	±6,750	\$1.55 MG	Available Now

\$0.15 / PSF CAM Fees

### STAN KWAK

Senior Vice President  
 skwak@voitco.com  
 714.935.2327  
 Lic. #01824776

### BARRY WALSH

Vice President  
 bwalsh@voitco.com  
 714.935.2309  
 Lic. #01213417

### BREN BLOWER

Associate  
 bblower@voitco.com  
 714.935.2323  
 Lic. #02194808

### SELDEN MCKNIGHT

Vice President  
 smcknight@voitco.com  
 714.935.2323  
 Lic. #02027919

**Voit**

REAL ESTATE SERVICES

2400 E. Katella Avenue, Suite 750, Anaheim, CA 92806 • 714.978.7880 • 714.978.9431 Fax

Licensed as Real Estate Salespersons by the CA Bar of Real Estate. The information contained herein has been obtained from sources we deem reliable. While we have no reason to doubt its accuracy, we do not guarantee it. ©2021 Voit Real Estate Services, Inc. All Rights Reserved. License # 01991785.

www.VoitCo.com

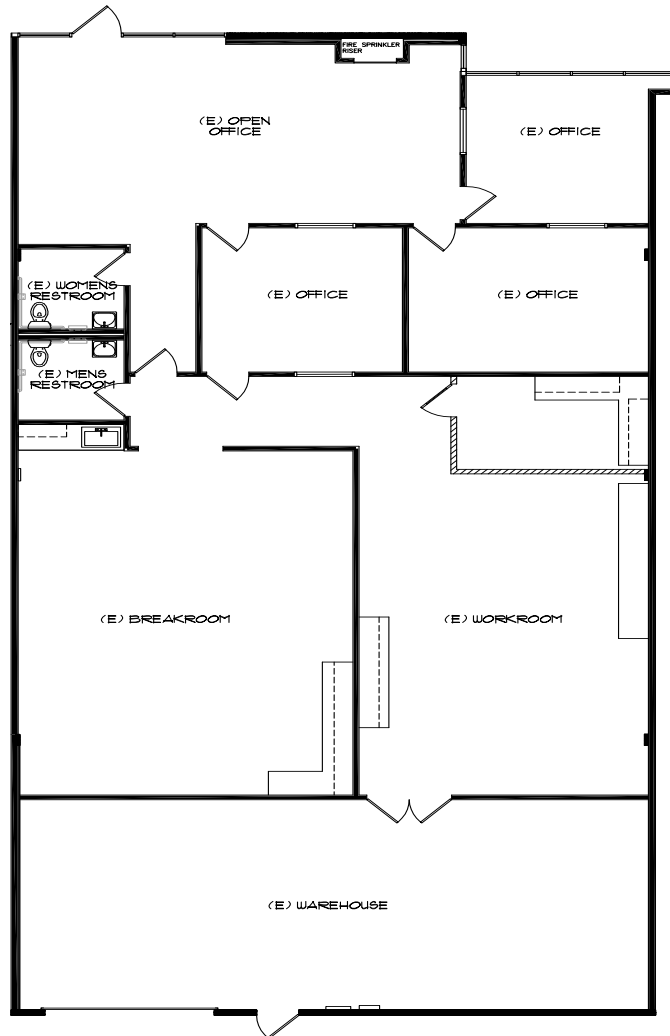
# BREA CENTRAL BUSINESS PARK

510 Central Avenue, Unit B, ±4,028 Square Feet



## FLOOR PLAN

510 Central Avenue, Unit B



*\*Floor Plan Not to Scale*

### STAN KWAK

Senior Vice President

skwak@voitco.com

714.935.2327

Lic. #01824776

### BARRY WALSH

Vice President

bwalshe@voitco.com

714.935.2309

Lic. #01213417

### BREN BLOWER

Associate

bblower@voitco.com

714.935.2323

Lic. #02194808

### SELDEN MCKNIGHT

Vice President

smcknight@voitco.com

714.935.2323

Lic. #02027919

# Voit

REAL ESTATE SERVICES

2400 E. Katella Avenue, Suite 750, Anaheim, CA 92806 • 714.978.7880 • 714.978.9431 Fax

Licensed as Real Estate Salespersons by the CA Bur of Real Estate. The information contained herein has been obtained from sources we deem reliable. While we have no reason to doubt its accuracy, we do not guarantee it. ©2021 Voit Real Estate Services, Inc. All Rights Reserved. License # 01991785.

www.VoitCo.com

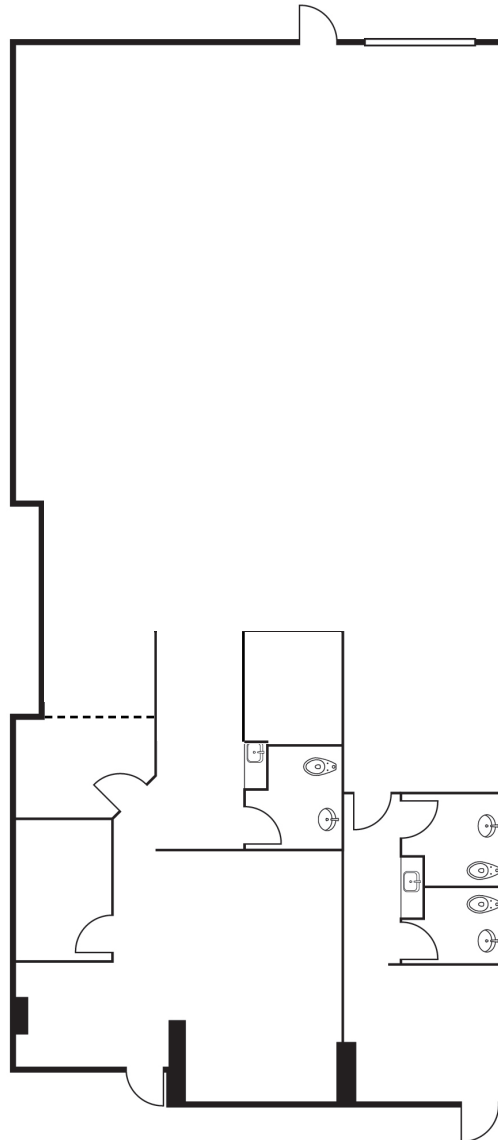
# BREA CENTRAL BUSINESS PARK

590 Central Avenue, Unit A , ±4,329 Square Feet



## FLOOR PLAN

590 Central Avenue, Unit A



*\*Floor Plan Not to Scale*

### STAN KWAK

Senior Vice President

skwak@voitco.com

714.935.2327

Lic. #01824776

### BARRY WALSH

Vice President

bwalsh@voitco.com

714.935.2309

Lic. #01213417

### BREN BLOWER

Associate

bblower@voitco.com

714.935.2323

Lic. #02194808

### SELDEN MCKNIGHT

Vice President

smcknight@voitco.com

714.935.2323

Lic. #02027919

# Voit

REAL ESTATE SERVICES

2400 E. Katella Avenue, Suite 750, Anaheim, CA 92806 • 714.978.7880 • 714.978.9431 Fax

Licensed as Real Estate Salespersons by the CA Bur of Real Estate. The information contained herein has been obtained from sources we deem reliable. While we have no reason to doubt its accuracy, we do not guarantee it. ©2021 Voit Real Estate Services, Inc. All Rights Reserved. License # 01991785.

www.VoitCo.com

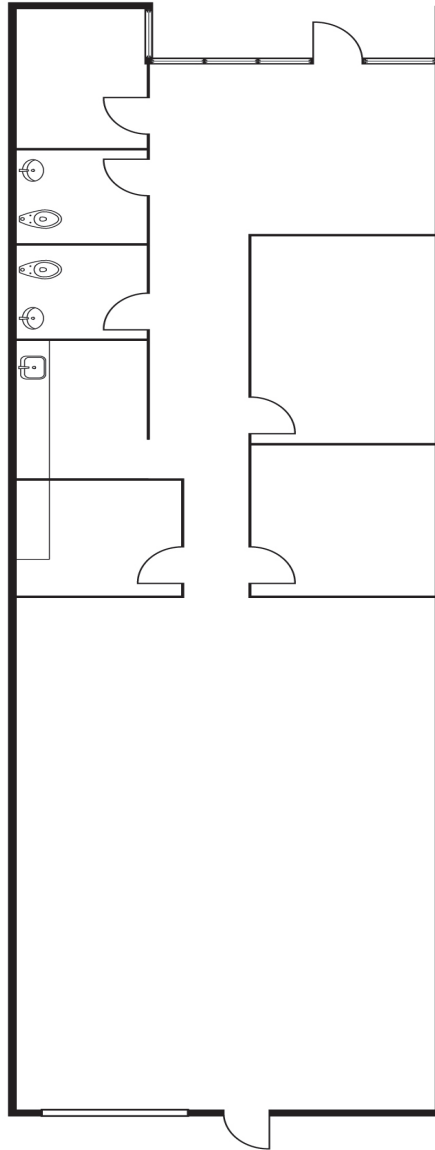
# BREA CENTRAL BUSINESS PARK

590 Central Avenue, Unit B, ±2,943 Square Feet



## FLOOR PLAN

590 Central Avenue, Unit B



*\*Floor Plan Not to Scale*

### STAN KWAK

Senior Vice President  
skwak@voitco.com

714.935.2327

Lic. #01824776

### BARRY WALSH

Vice President  
bwalshe@voitco.com

714.935.2309

Lic. #01213417

### BREN BLOWER

Associate  
bblower@voitco.com

714.935.2323

Lic. #02194808

### SELDEN MCKNIGHT

Vice President  
smcknight@voitco.com

714.935.2323

Lic. #02027919

# Voit

REAL ESTATE SERVICES

2400 E. Katella Avenue, Suite 750, Anaheim, CA 92806 • 714.978.7880 • 714.978.9431 Fax

Licensed as Real Estate Salespersons by the CA Bur of Real Estate. The information contained herein has been obtained from sources we deem reliable. While we have no reason to doubt its accuracy, we do not guarantee it. ©2021 Voit Real Estate Services, Inc. All Rights Reserved. License # 01991785.

www.VoitCo.com

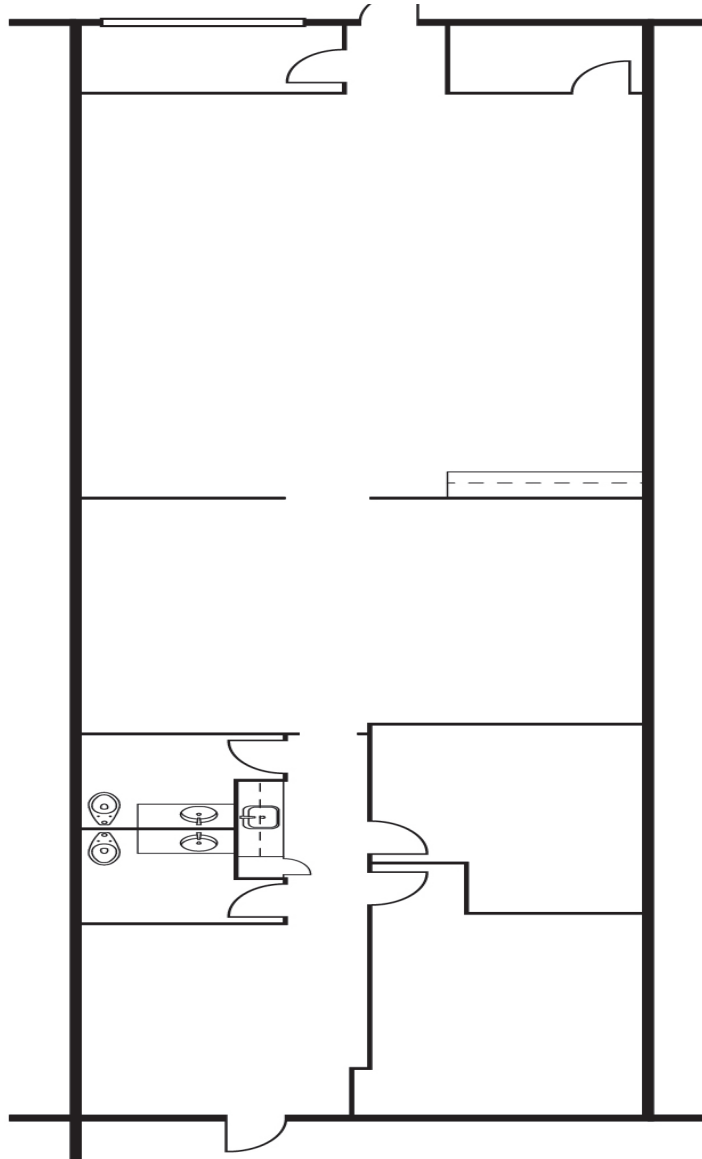
# BREA CENTRAL BUSINESS PARK

590 Central Avenue, Unit I, ±2,992 Square Feet



## FLOOR PLAN

590 Central Avenue, Unit I



*\*Floor Plan Not to Scale*

### STAN KWAK

Senior Vice President

skwak@voitco.com

714.935.2327

Lic. #01824776

### BARRY WALSH

Vice President

bwalshe@voitco.com

714.935.2309

Lic. #01213417

### BREN BLOWER

Associate

bblower@voitco.com

714.935.2323

Lic. #02194808

### SELDEN MCKNIGHT

Vice President

smcknight@voitco.com

714.935.2323

Lic. #02027919

# Voit

REAL ESTATE SERVICES

2400 E. Katella Avenue, Suite 750, Anaheim, CA 92806 • 714.978.7880 • 714.978.9431 Fax

Licensed as Real Estate Salespersons by the CA Bur of Real Estate. The information contained herein has been obtained from sources we deem reliable. While we have no reason to doubt its accuracy, we do not guarantee it. ©2021 Voit Real Estate Services, Inc. All Rights Reserved. License # 01991785.

www.VoitCo.com

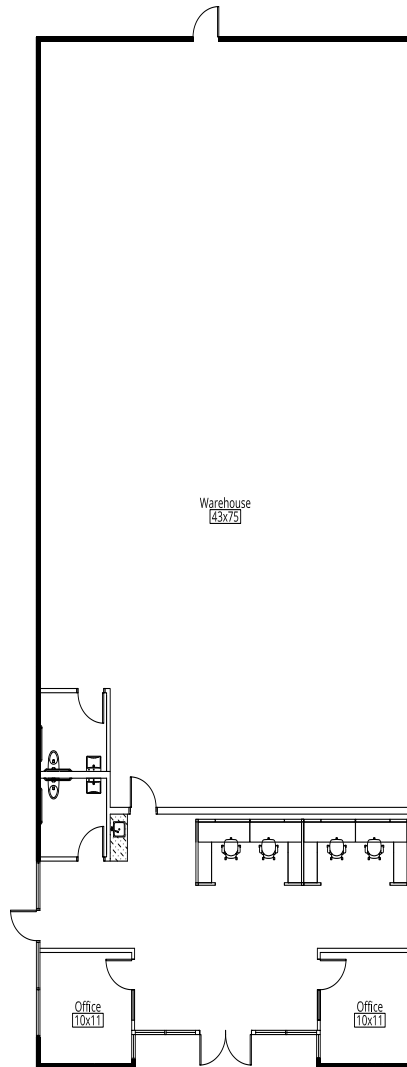
# BREA CENTRAL BUSINESS PARK

684 N Berry St, Unit C, ±4,900 Square Feet



## FLOOR PLAN

684 N Berry St, Unit C



*\*Floor Plan Not to Scale*

### STAN KWAK

Senior Vice President  
skwak@voitco.com

714.935.2327

Lic. #01824776

### BARRY WALSH

Vice President  
bwalshe@voitco.com

714.935.2309

Lic. #01213417

### BREN BLOWER

Associate  
bblower@voitco.com

714.935.2323

Lic. #02194808

### SELDEN MCKNIGHT

Vice President  
smcknight@voitco.com

714.935.2323

Lic. #02027919

# Voit

REAL ESTATE SERVICES

2400 E. Katella Avenue, Suite 750, Anaheim, CA 92806 • 714.978.7880 • 714.978.9431 Fax

Licensed as Real Estate Salespersons by the CA Bur of Real Estate. The information contained herein has been obtained from sources we deem reliable. While we have no reason to doubt its accuracy, we do not guarantee it. ©2021 Voit Real Estate Services, Inc. All Rights Reserved. License # 01991785.

www.VoitCo.com



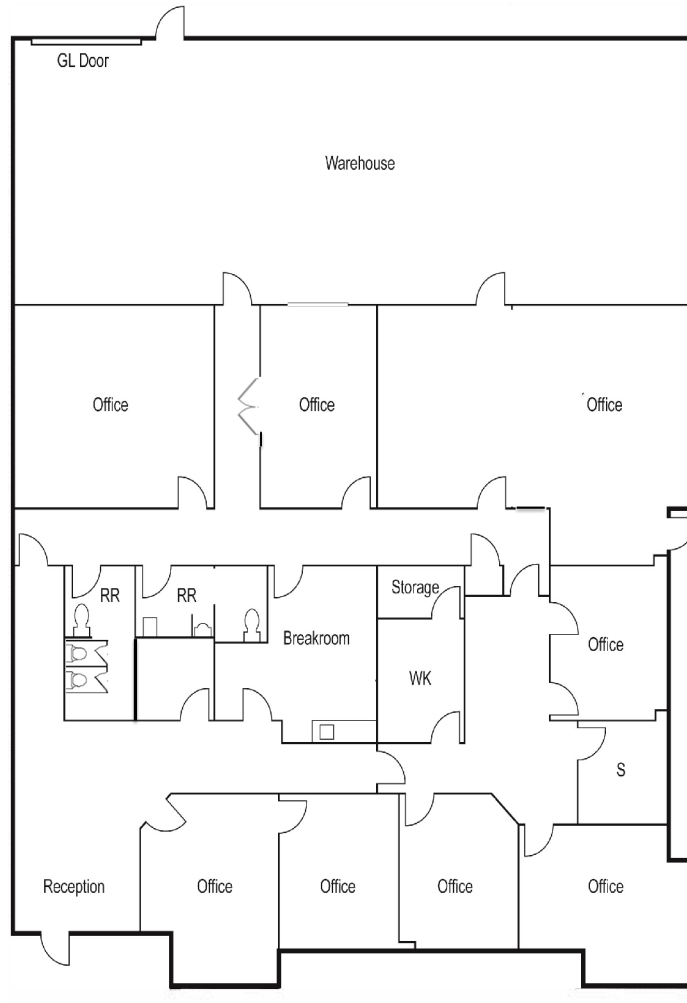
# BREA CENTRAL BUSINESS PARK

690 N Berry St, Unit B, ±6,750 Square Feet



## FLOOR PLAN

690 N Berry St, Unit B



*\*Floor Plan Not to Scale*

### STAN KWAK

Senior Vice President  
skwak@voitco.com  
714.935.2327  
Lic. #01824776

### BARRY WALSH

Vice President  
bwalshe@voitco.com  
714.935.2309  
Lic. #01213417

### BREN BLOWER

Associate  
bblower@voitco.com  
714.935.2323  
Lic. #02194808

### SELDEN MCKNIGHT

Vice President  
smcknight@voitco.com  
714.935.2323  
Lic. #02027919

# Voit

REAL ESTATE SERVICES

2400 E. Katella Avenue, Suite 750, Anaheim, CA 92806 • 714.978.7880 • 714.978.9431 Fax

Licensed as Real Estate Salespersons by the CA Bur of Real Estate. The information contained herein has been obtained from sources we deem reliable. While we have no reason to doubt its accuracy, we do not guarantee it. ©2021 Voit Real Estate Services, Inc. All Rights Reserved. License # 01991785.

www.VoitCo.com