

For Lease
4,868 SF

Regency Office Space

1005 S 107th Avenue | Omaha, Nebraska

Join Hauptman O'Brien and Make-A-Wish in this well-maintained, two-story office building located in Regency Landing off of I-680 and Pacific Street.

CBRE



Property Overview

Office Space For Lease

4,868

SF - Space Available

\$18.75

PSF - Lease Rate

NNN

Lease Type

\$11.58

PSF - NNN Rate

23,524

SF - Building Size

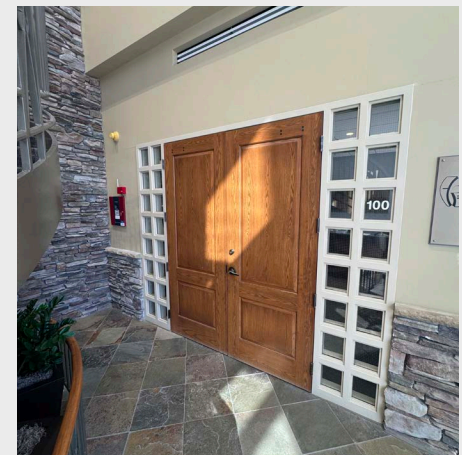
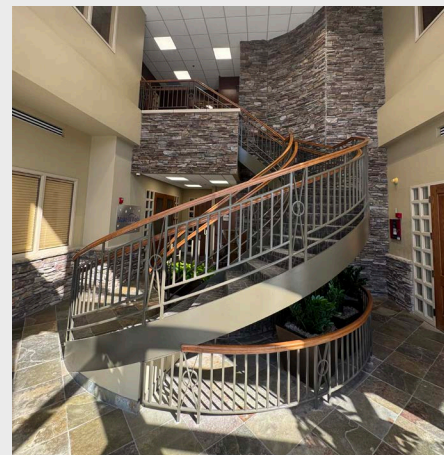
2003

Year Built

1.28

AC - Lot Size

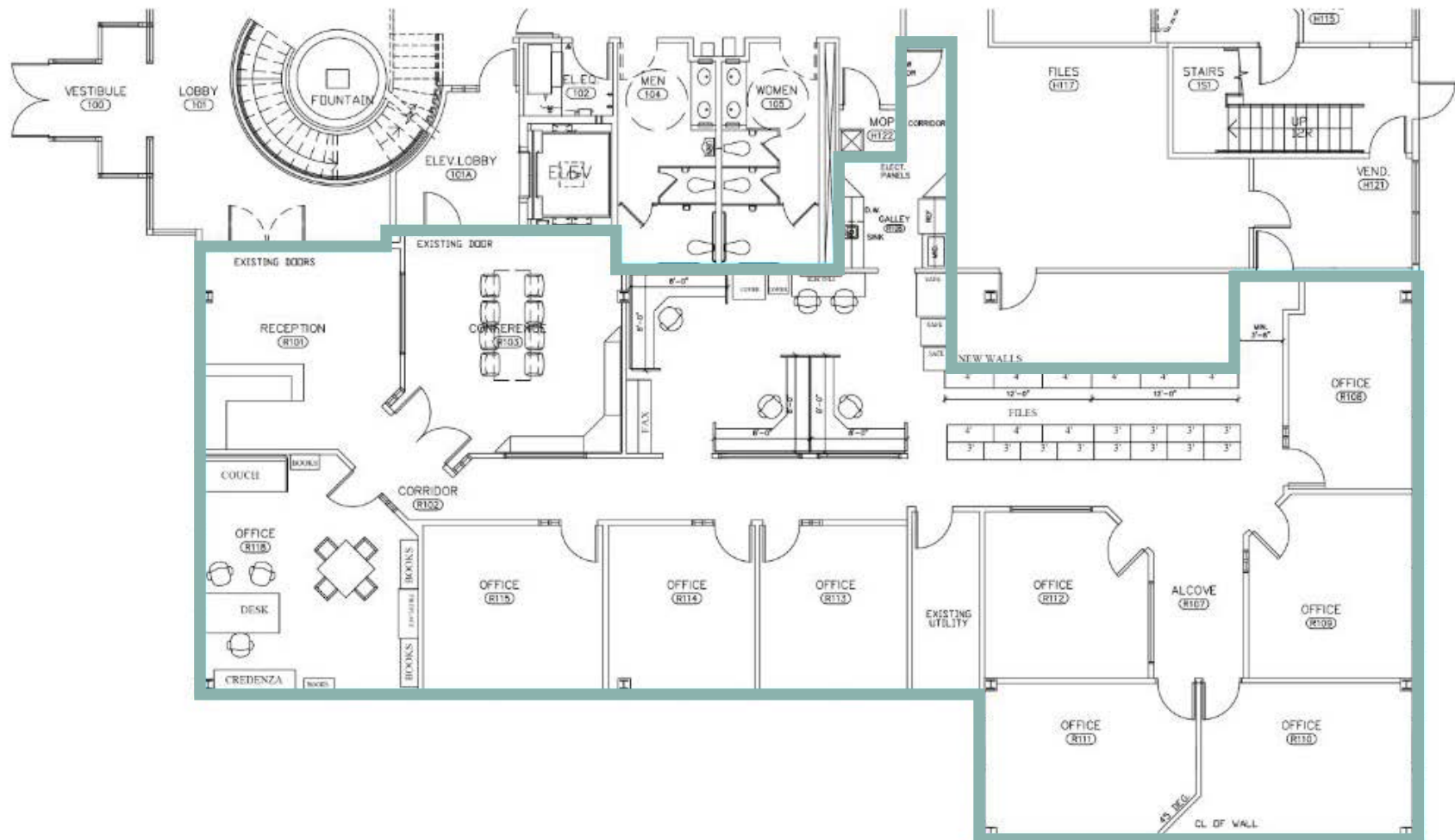
- Located adjacent to the new Regency Landing development and Big Papio trail
- Ample parking
- Monument signage available
- Within walking distance to many restaurants
- Convenient, amenity-rich location with easy interstate access



Floorplan

Suite 100 | 4,868 SF

This first floor space features a reception area, nine private offices, a large conference room, open work space and a kitchenette



Property Aerial

1005 S 107th Avenue





For Lease | 4,868 SF

1005 S 107th Avenue | Omaha, Nebraska

Make-A-Wish

HAUPTMAN

Regency Office Space

Dale Scott

Senior Vice President

+1 402 697 5846

dale.scott@cbre.com

Cole Scott

First Vice President

+1 402 697 5808

cole.scott@cbre.com

CBRE

© 2025 CBRE, Inc. All rights reserved. This information has been obtained from sources believed reliable but has not been verified for accuracy or completeness. CBRE, Inc. makes no guarantee, representation or warranty and accepts no responsibility or liability as to the accuracy, completeness, or reliability of the information contained herein. You should conduct a careful, independent investigation of the property and verify all information. Any reliance on this information is solely at your own risk. CBRE and the CBRE logo are service marks of CBRE, Inc. All other marks displayed on this document are the property of their respective owners, and the use of such marks does not imply any affiliation with or endorsement of CBRE. Photos herein are the property of their respective owners. Use of these images without the express written consent of the owner is prohibited. rev070825aw