

FOR LEASE

960 CONGER STREET - EUGENE, OREGON 97402

WEST EUGENE INDUSTRIAL BUILDING

- 9,300 SQUARE FEET
- LOT SIZE 0.65 ACRES
- METAL BUILDING WITH 4 FT CONCRETE BLOCK WALLS
- TWO ROLL-UP DOORS (12 FT)
- I-3 ZONING
- FULLY FENCED AND SECURED PARKING (30 SPOTS)
- EXCELLENT LOCATION ONE BLOCK OFF W. 11TH WITH HWY 99 ACCESS

Lease Rate: \$0.69/SF, NNN



For more information contact:

BILL NEWLAND

bill@campbellre.com | (541) 484-2214

Licensed in the State of Oregon

TIM CAMPBELL

timc@campbellre.com | (541) 484-2214

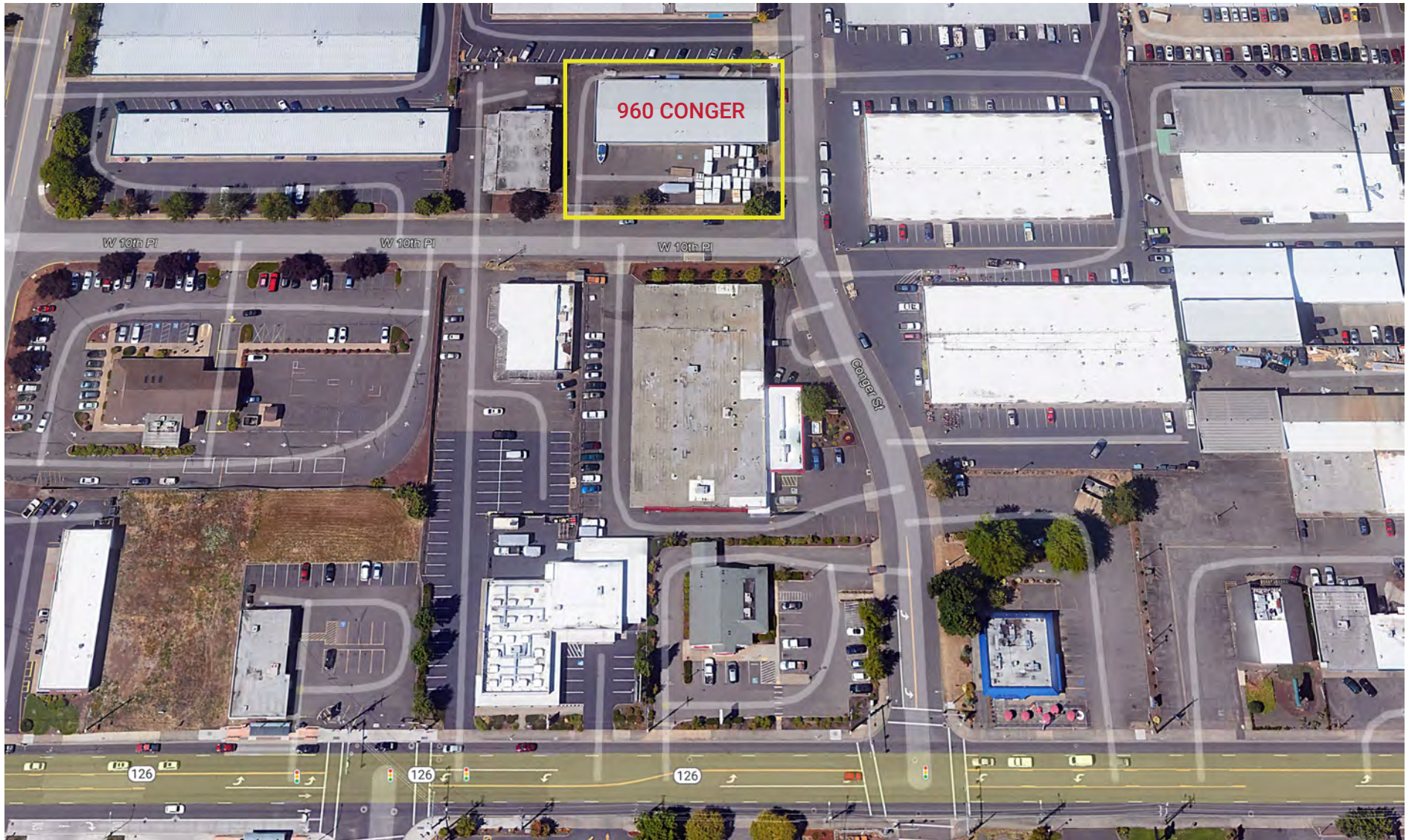
Licensed in the State of Oregon

BUILDING INTERIOR PHOTOS



The information in this package was obtained from sources deemed reliable, and is not guaranteed by agent. Package is subject to change, error or omission, prior sale or lease, correction or withdrawal. Any party contemplating purchase is urged to conduct their own independent study and inspection.

PROPERTY AERIAL MAP



The information in this package was obtained from sources deemed reliable, and is not guaranteed by agent. Package is subject to change, error or omission, prior sale or lease, correction or withdrawal. Any party contemplating purchase is urged to conduct their own independent study and inspection.

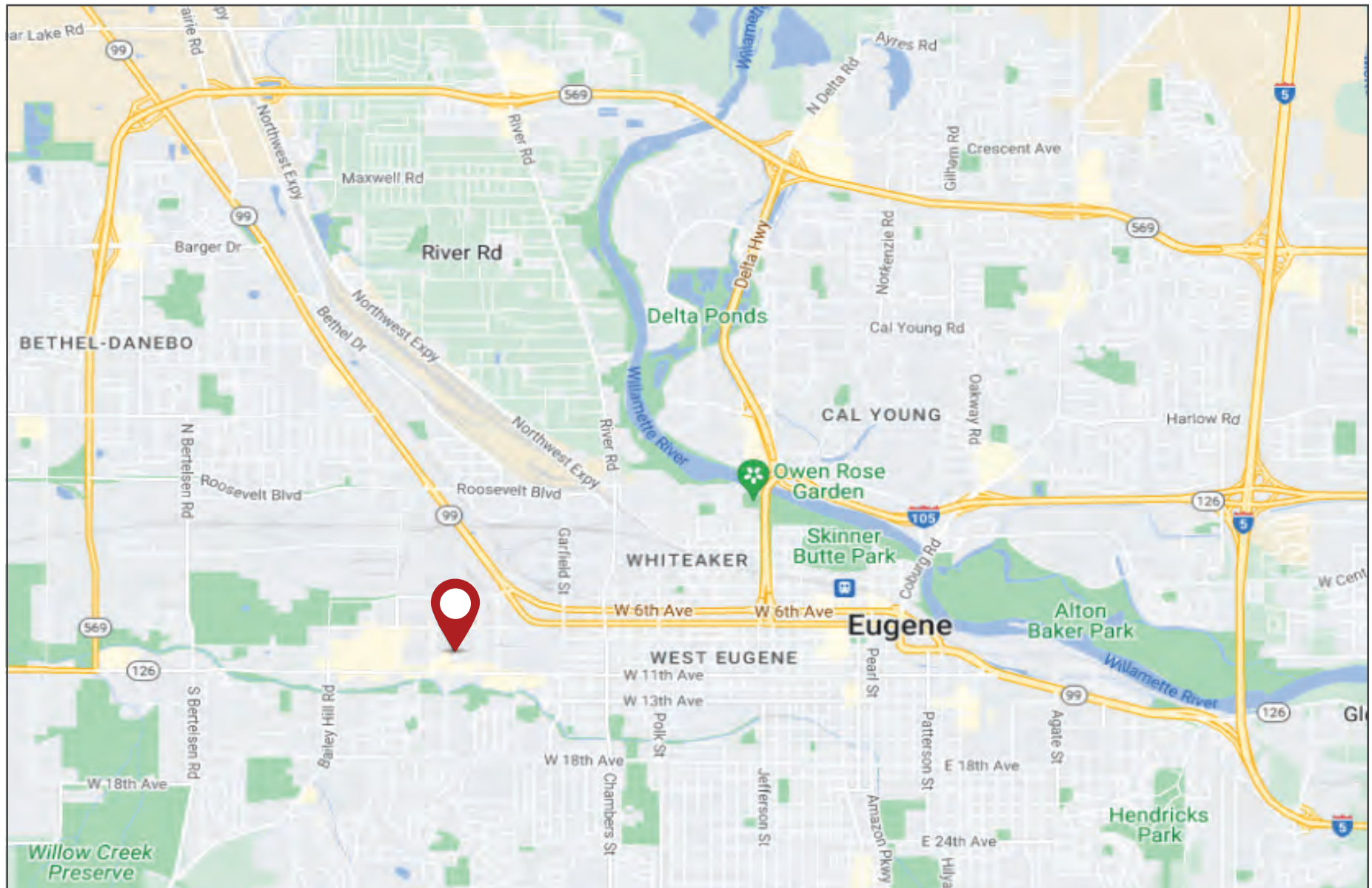
TENANT AERIAL MAP



The information in this package was obtained from sources deemed reliable, and is not guaranteed by agent. Package is subject to change, error or omission, prior sale or lease, correction or withdrawal. Any party contemplating purchase is urged to conduct their own independent study and inspection.



PROPERTY LOCATION MAP



The information in this package was obtained from sources deemed reliable, and is not guaranteed by agent. Package is subject to change, error or omission, prior sale or lease, correction or withdrawal. Any party contemplating purchase is urged to conduct their own independent study and inspection.