



# LEASE OPPORTUNITY AVAILABLE

**1025 Red Oak Lane**  
Lindenhurst, Illinois 60046

One Oakbrook Terrace  
Suite 400  
Oakbrook Terrace, Illinois 60181  
+1 630 932 1234

[hiffman.com](http://hiffman.com)

## PROPERTY HIGHLIGHTS

This 45,000 SF deluxe medical outpatient building opened in 2012 to bring leading physician practices close to people who live and work in western Lake County. Current availabilities at this two-story medical outpatient building offer a great opportunity for physician services within the Vista campus.



PROFESSIONALLY  
MANAGED AND  
MAINTAINED



FLEXIBLE AND  
EFFICIENT FLOOR  
PLANS

## Contact

Jason Wurtz  
+1 630 693 0692  
[jwurtz@hiffman.com](mailto:jwurtz@hiffman.com)

Sarah Walker  
+1 630 389 8911  
[swalker@hiffman.com](mailto:swalker@hiffman.com)



CUSTOM SUITE DESIGNED  
BY HEALTHCARE  
ARCHITECTS



TENANT IMPROVEMENT  
ALLOWANCE OR "TURN-  
KEY" DELIVERY



ABUNDANT PARKING  
FOR PATIENTS AND  
STAFF

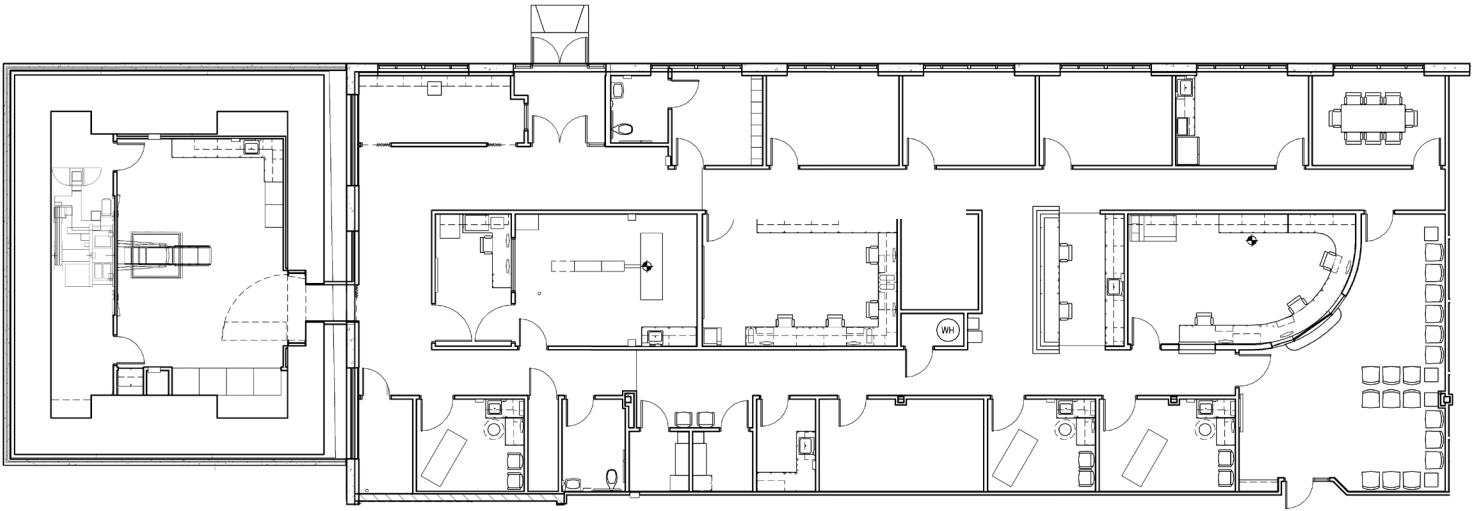


ACCESS TO I-94 FULL  
INTERCHANGE VIA  
GRAND AVENUE

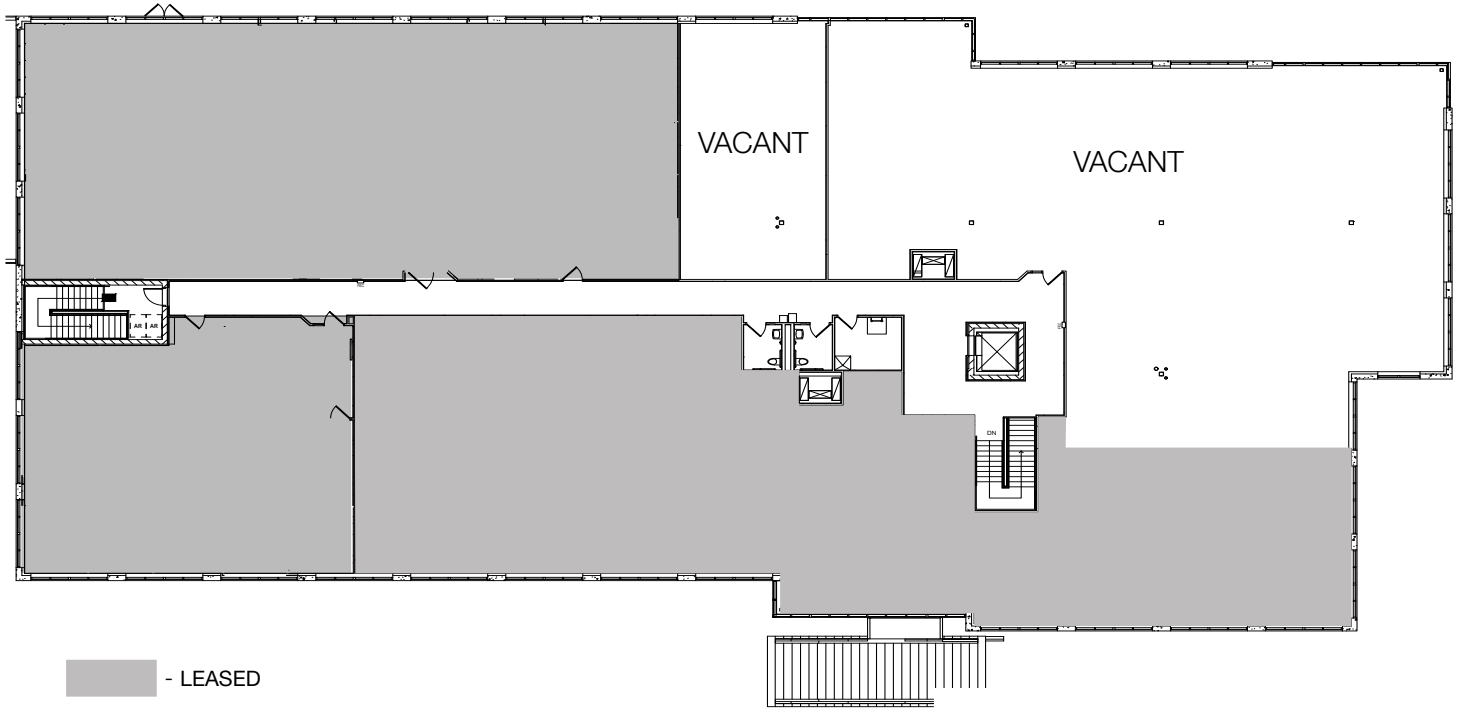
NO WARRANTY OR REPRESENTATION, EXPRESS OR IMPLIED, IS MADE AS TO THE ACCURACY OF THE INFORMATION CONTAINED HEREIN, AND THE SAME IS SUBMITTED SUBJECT TO ERRORS, OMISSIONS, CHANGE OF PRICE, RENTAL OR OTHER CONDITIONS, PRIOR SALE, LEASE OR FINANCING, OR WITHDRAWAL WITHOUT NOTICE, AND OF ANY SPECIAL LISTING CONDITIONS IMPOSED BY OUR PRINCIPALS. NO WARRANTIES OR REPRESENTATIONS ARE MADE AS TO THE CONDITION OF THE PROPERTY OR ANY HAZARDS CONTAINED THEREIN ARE ANY TO BE IMPLIED.



OUTPATIENT SPACE AVAILABLE



1,030 - 7,266 SF  
Partial 2nd Floor





## Contact

Jason Wurtz

+1 630 693 0692

[jwurtz@hiffman.com](mailto:jwurtz@hiffman.com)

Sarah Walker

+1 630 389 8911

[swalker@hiffman.com](mailto:swalker@hiffman.com)



One Oakbrook Terrace  
Suite 400  
Oakbrook Terrace, Illinois 60181  
+1 630 932 1234