



For Lease

**RIPCO**  
RETAIL LEASING

# Port Washington, NY

927 Port Washington Blvd  
Nassau County

1,000 SF + Basement

Fully built-out retail space

Contact  
Exclusive Agents

Jason Sobel  
[jsobel@ripcony.com](mailto:jsobel@ripcony.com) | 516.933.8880

Sydney Schmitt  
[sschmitt@ripcony.com](mailto:sschmitt@ripcony.com) | 516.933.8880



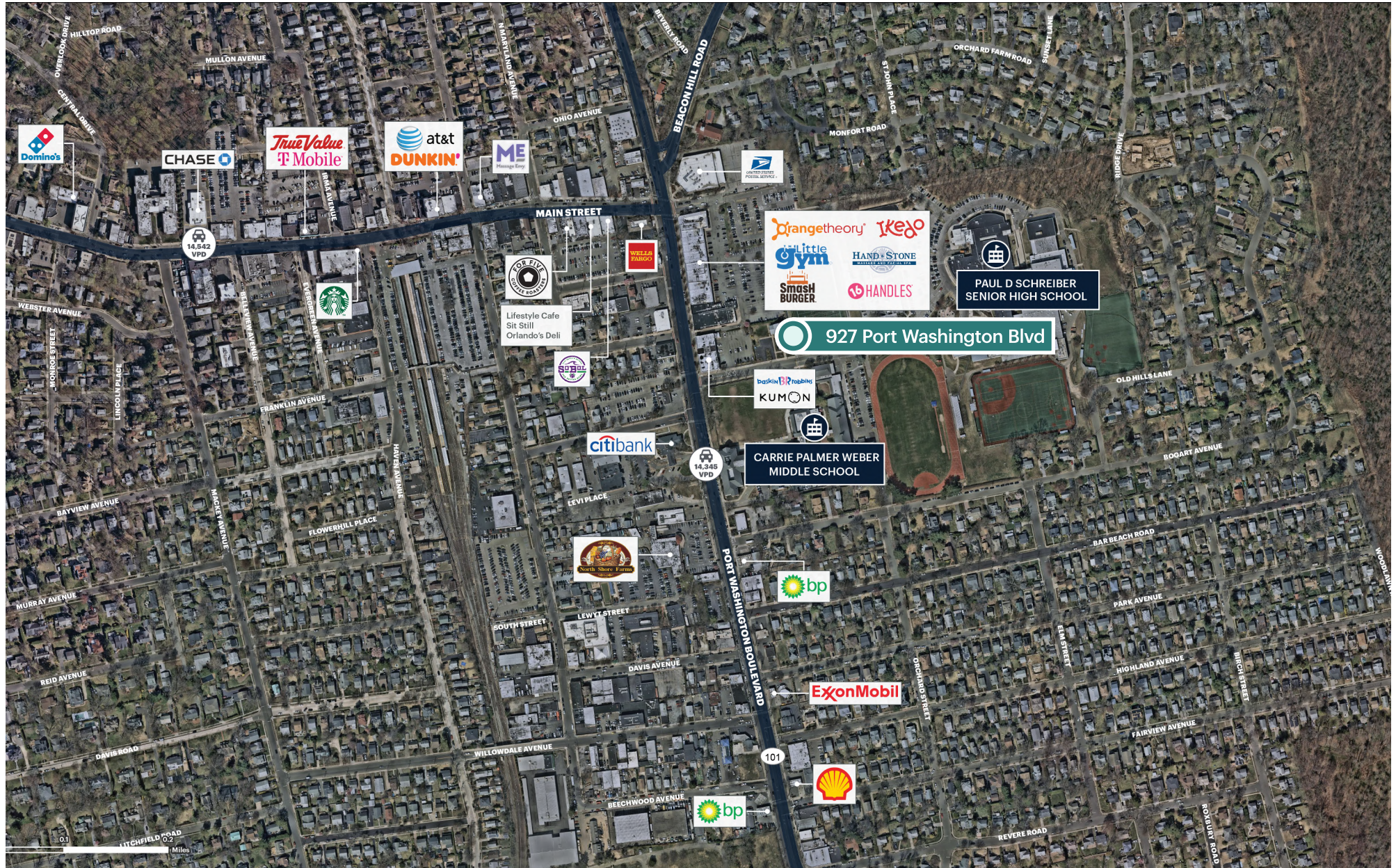
# Space Details



<b>Size</b>	Ground Floor 1,000 SF + Basement
<b>Frontage</b>	17 FT of frontage on Port Washington Blvd
<b>Possession</b>	April 1, 2026
<b>Rent</b>	Upon request
<b>Co-Tenants</b>	Baskin-Robbins, Wellground Clothing Boutique, Kumon, Acupuncture Wellness, A-Force Brazilian Jiu Jitsu Academy, Metro Physical Therapy, Yoga Life
<b>Neighbors</b>	The Little Gym, Orangetheory Fitness, 16 Handles, Hand & Stone Massage and Facial Spa, Valley Bank, Subway, Mathnasium, Smashburger
<b>Comments</b>	Fully built-out retail space Adjacent to Paul D Schreiber High School High average household incomes

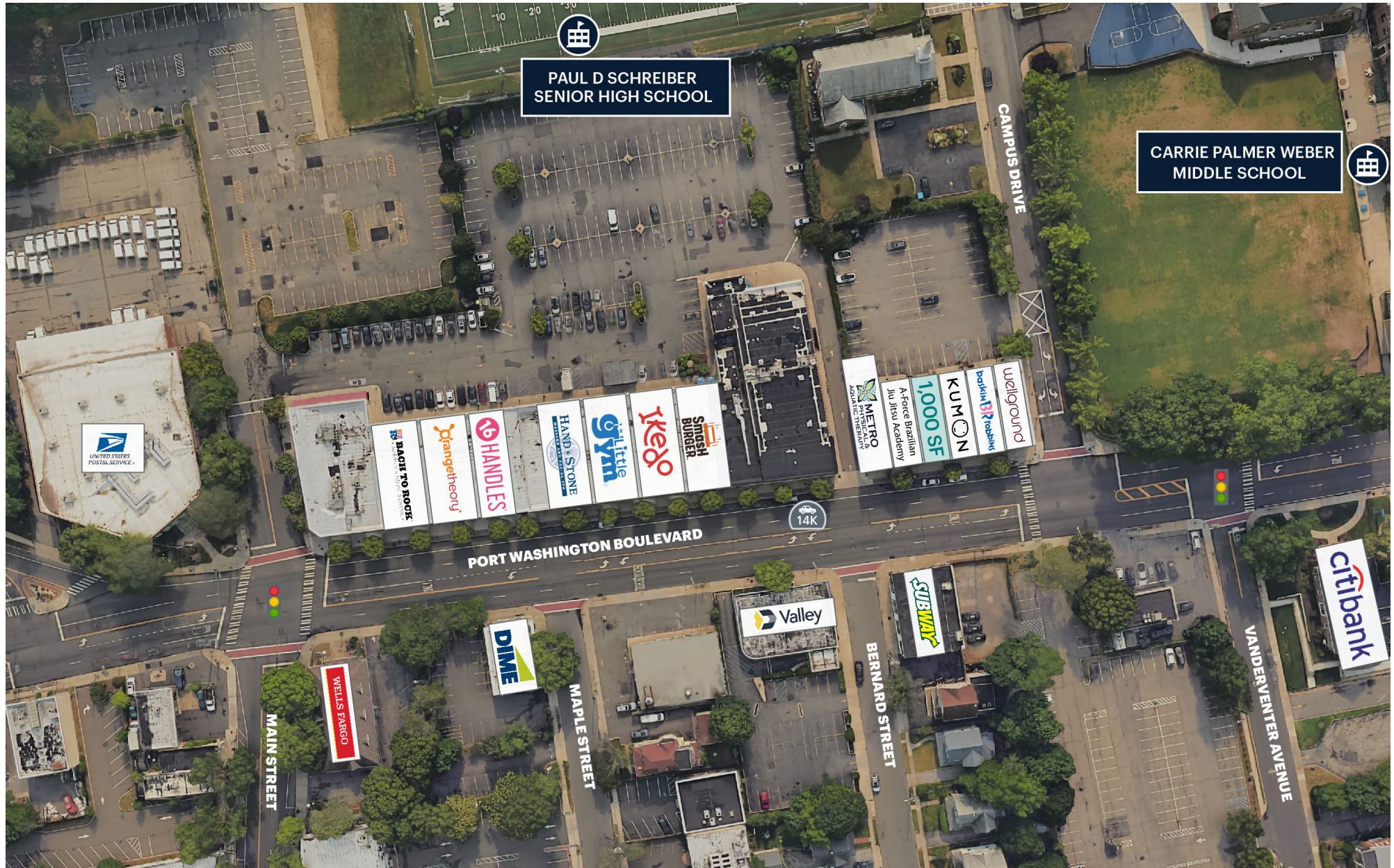


# Market Aerial

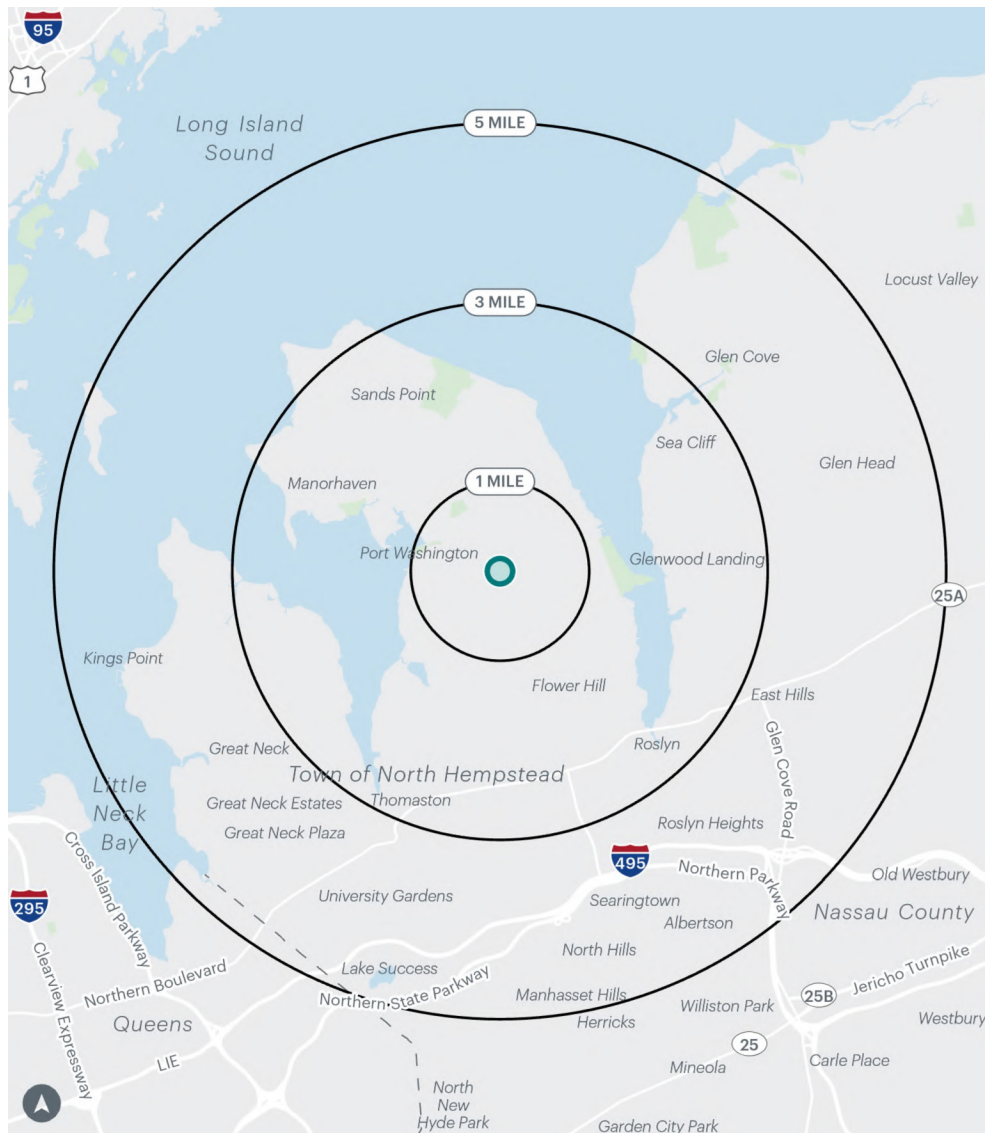




# Close Up Aerial







## Area Demographics

	1 mile	3 miles	5 miles
<b>Population</b>	14,781	70,466	185,122
<b>Total Households</b>	5,350	24,660	64,850
<b>Average Household Income</b>	\$277,313	\$279,936	\$241,840
<b>Median Household Income</b>	\$196,649	\$179,337	\$155,241
<b>% Population with Bachelors +</b>	72.0%	71.0%	64.0%
<b>Daytime Population</b>	13,884	72,305	211,660
<b>Total Daytime Employees</b>	6,515	35,085	114,505
<b>Total Businesses</b>	843	3,588	10,049