

FOR LEASE

115 HOOD TERRACE
WEST HAVEN CT
KENNETH GINSBERG 203-376-6266

KNG
REALTY
(959) CALL-KNG

AMPLE
PARKING

1,300 SF INDUSTRIAL SPACE

JUST LISTED!

- SPACE AVAILABLE JANUARY 31ST, 2025 POSSIBLY SOONER.
- 15 FOOT CLEAR HEIGHT
- 8X10 OVERHEAD DOOR
- ACCESS TO THREE LOADING DOCS
- TWO LOADING DOCKS ARE ADJUSTABLE/SELF LEVELING

EASY ACCESS TO I-95
SAW MILL RD EXIT #42

LEASE PRICE

\$2,000/MO. + UTIL

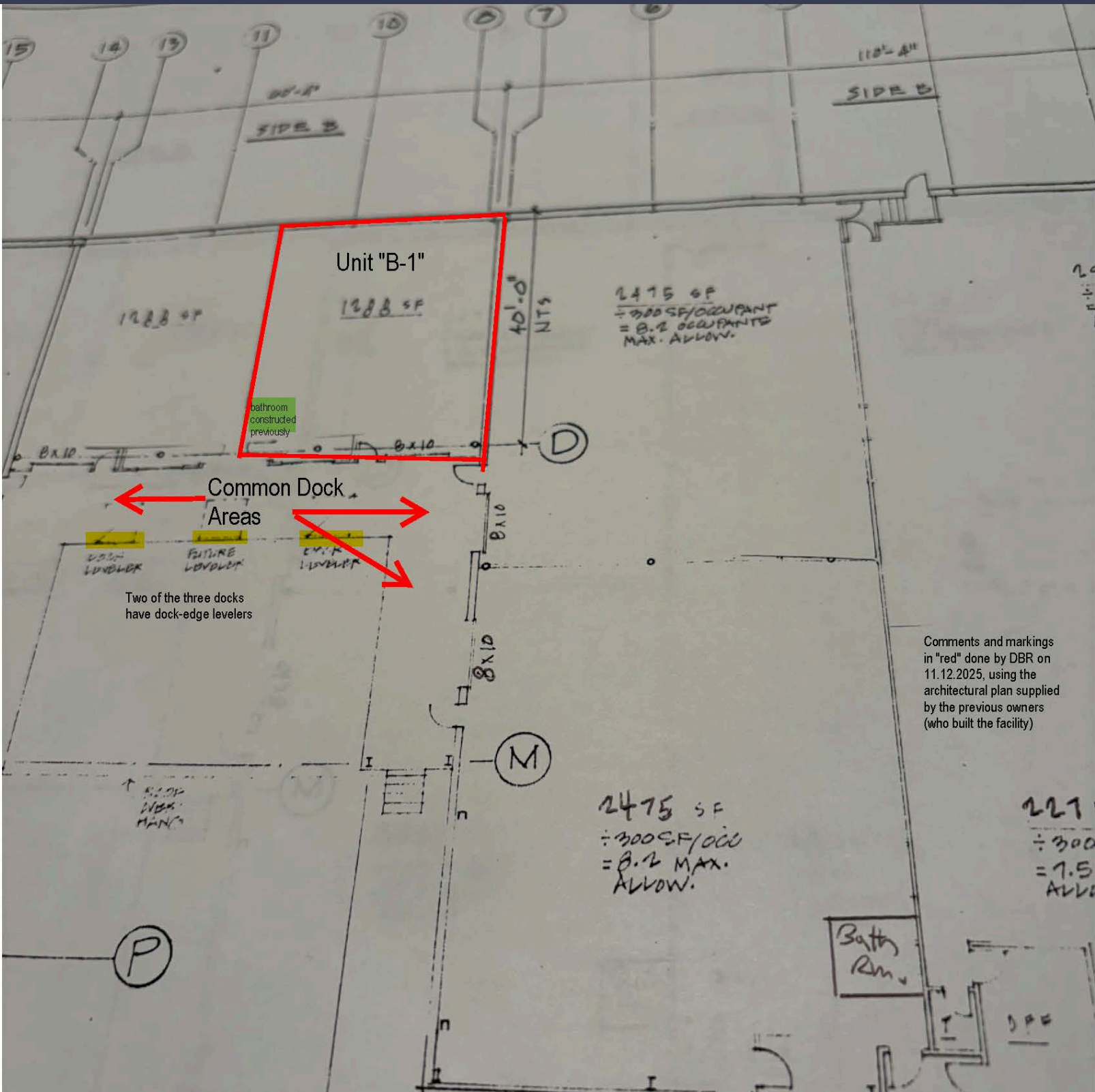


PROPERTY FACTS

115 HOOD TERRACE

Total Building SF	49,000 SF
Available SF	1,300 SF
Year Built	1988
Ceiling Height	20' +/-
Parking	Paved Lot
Stories	1
Overhead Doors	1
Sewer	City
Water	Public Water
Zoning	TOD
Heat	Forced Air/Gas
Assessment	\$2,304,680
Mill Rate	37.39
Taxes / SF	\$1.76

115 HOOD TERRACE WEST HAVEN CT



Comments and markings in "red" done by DBR on 11.12.2025, using the architectural plan supplied by the previous owners (who built the facility)