

For Lease

Fully Air Conditioned Industrial

54,000 SF

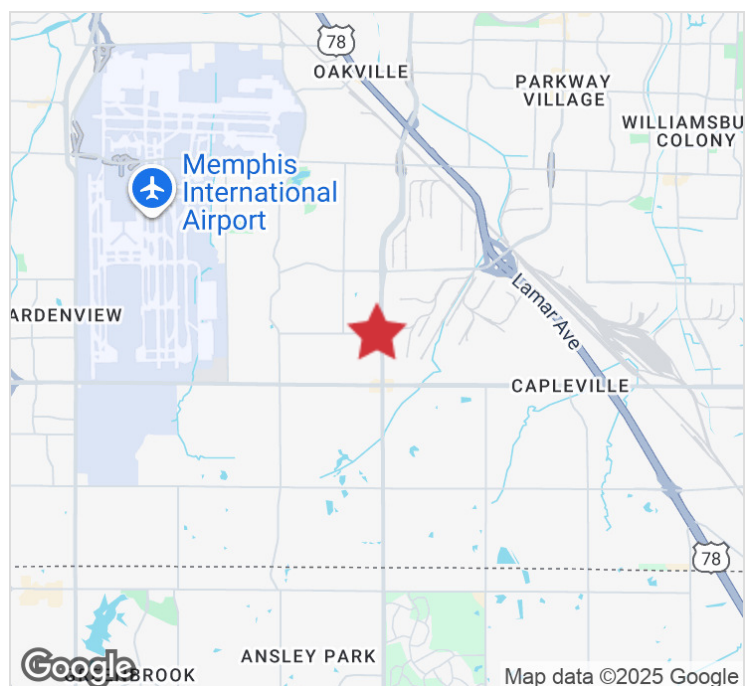


4477 Getwell Road

Memphis, Tennessee 38118

Property Features

- 100% air conditioned warehouse/distribution facility
- 54,000 SF
- 7,454 SF office space
- Heavy power - approximately 5000 amps
- 24' clear height
- 150' asphalt truck court with 45' concrete truck apron
- Class IV sprinkler system
- (9) 8'x10' dock high overhead doors
- 40'x41'8" column spacing
- 50 parking spaces
- Security fence around parking area



For more information:

Hank Martin, SIOR

901 526 3100 • hmartin@saigcompany.com

NO WARRANTY OR REPRESENTATION, EXPRESS OR IMPLIED, IS MADE AS TO THE ACCURACY OF THE INFORMATION CONTAINED HEREIN, AND THE SAME IS SUBMITTED SUBJECT TO ERRORS, OMISSIONS, CHANGE OF PRICE, RENTAL OR OTHER CONDITIONS, PRIOR SALE, LEASE OR FINANCING, OR WITHDRAWAL WITHOUT NOTICE, AND OF ANY SPECIAL LISTING CONDITIONS IMPOSED BY OUR PRINCIPALS NO WARRANTIES OR REPRESENTATIONS ARE MADE AS TO THE CONDITION OF THE PROPERTY OR ANY HAZARDS CONTAINED THEREIN ARE ANY TO BE IMPLIED.

NAI Saig Company

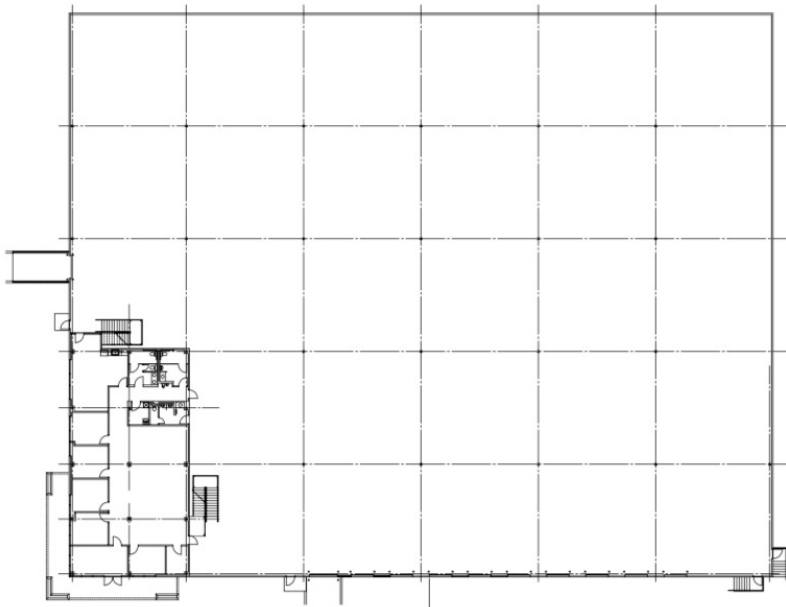
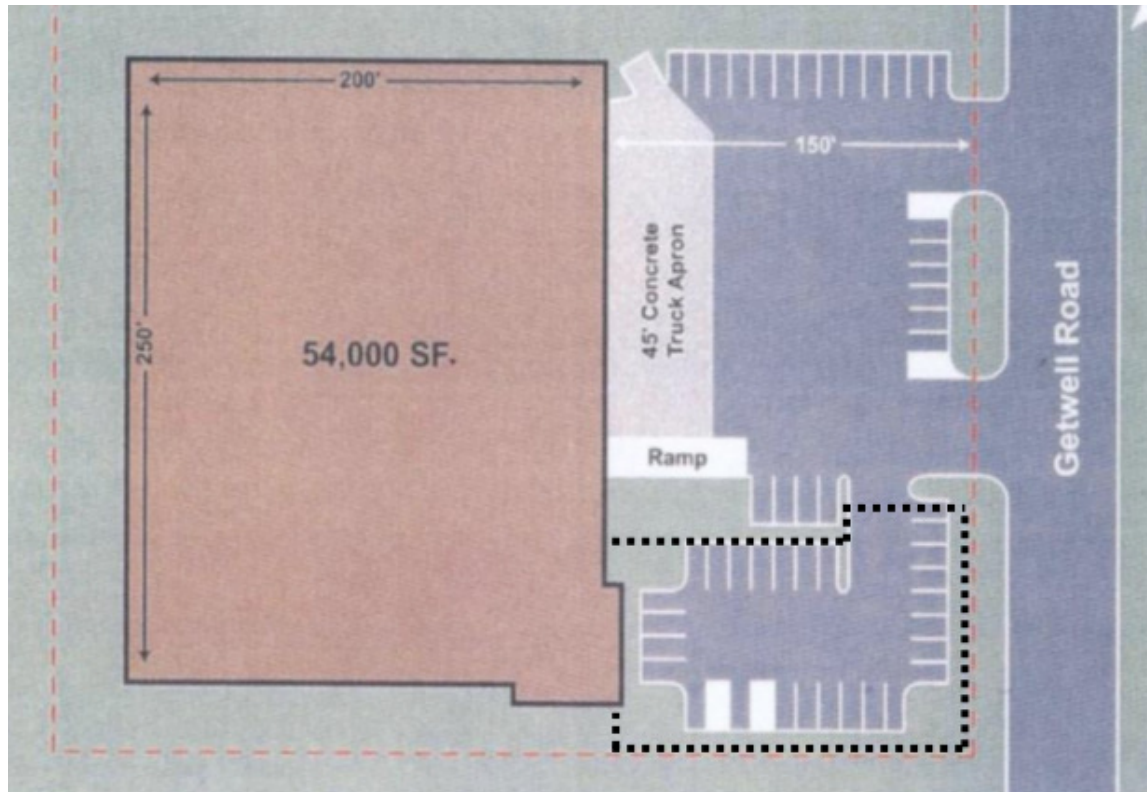
6263 Poplar Avenue Suite 150, Memphis, TN 38119

901 526 3100

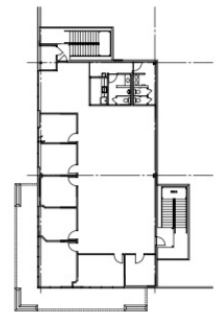
saigcompany.com

For Lease

Fully Air Conditioned Industrial



BUILDING FLOOR PLAN
SCALE: 1/8" = 1'-0"



MEZZANINE FLOOR PLAN
SCALE: 1/8" = 1'-0"