

PRIME LEASING OPPORTUNITY AVAILABLE



# Bonavista Promenade Shopping Centre

755 Lake Bonavista Drive SE  
Calgary, AB



CBRE



# Demographics



**55,472**

Population Within 3 KM



**\$160,375**

Average Household  
Income Within 3 KM



**32%** of population aged between  
**20 - 44 Years**  
Within 3 KM

## Prime retail opportunity in a modern enclosed mall

- Modern suburban enclosed mall with ample parking.
- Anchored by Safeway with other tenants including Shoppers Drug Mart, TD, Circle K, Subway, Little Caesars and Brewsters.
- This neighborhood mall provides an excellent opportunity to foster and grow a business in an established and busy mall.
- Servicing the Communities of Lake Bonavista, Willow Park, Canyon Meadows, Queensland and Deer Run.

### Space Available

**Unit 169**

**937 sq. ft.**

BASIC RENT - Market

OP COSTS & TAXES - \$21.70 + Mgmt Fee (2025)

SIGNAGE - Fascia

POSSESSION - Immediate

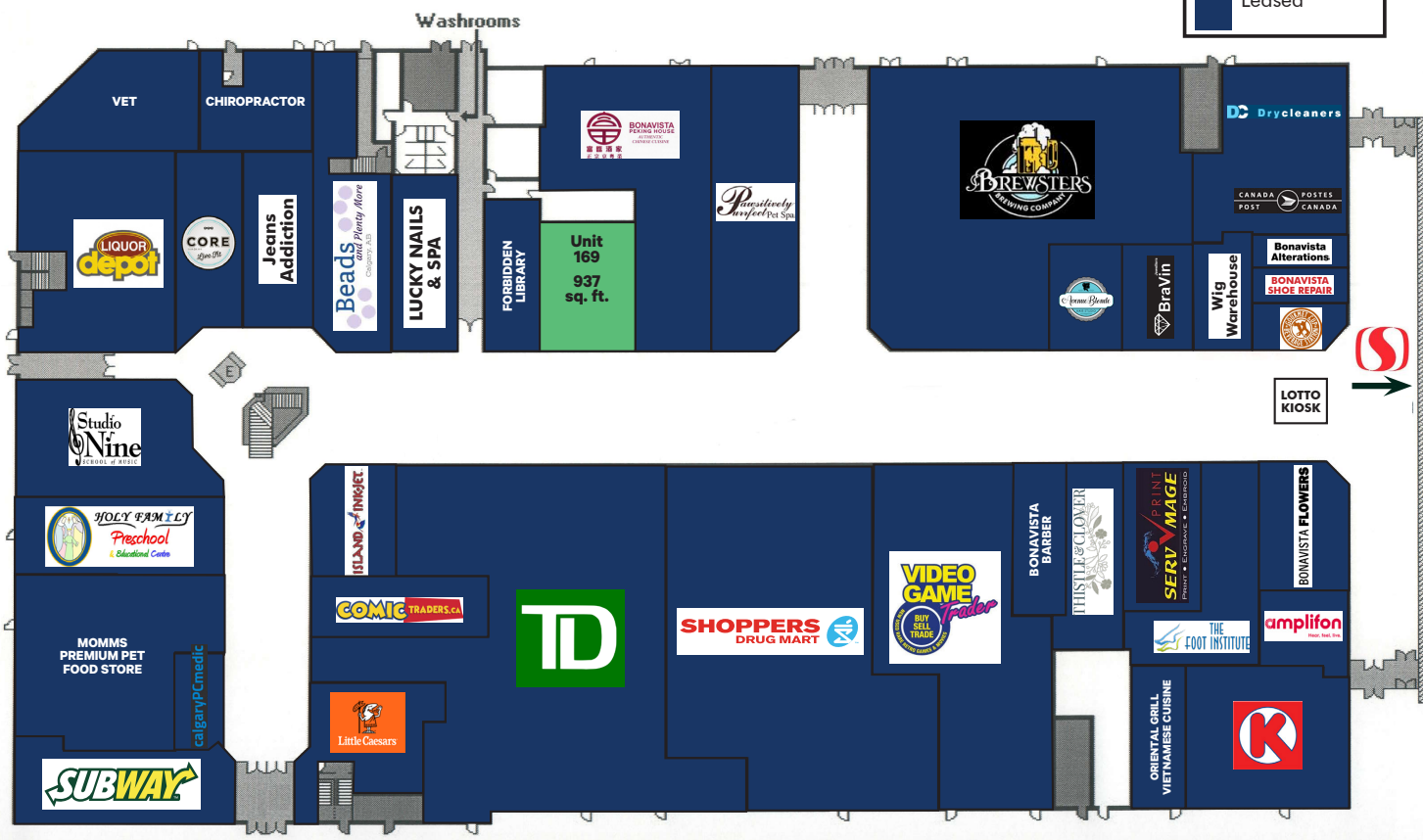
ZONING - DC

TERM - 5 - 10 years



# Leasing Plan

## Main Floor



Unit 169  
937 sq. ft.

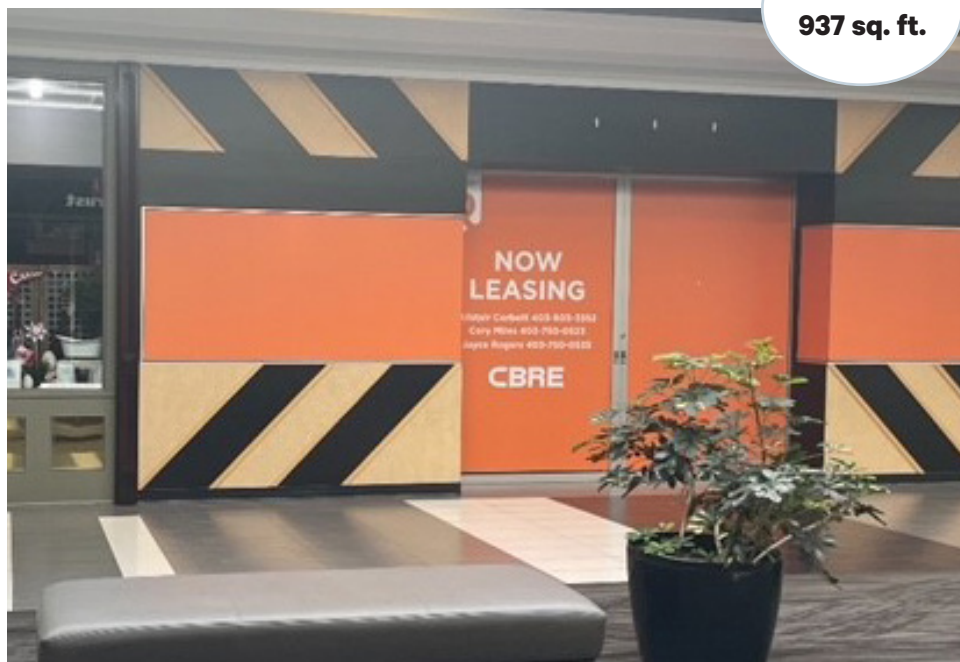
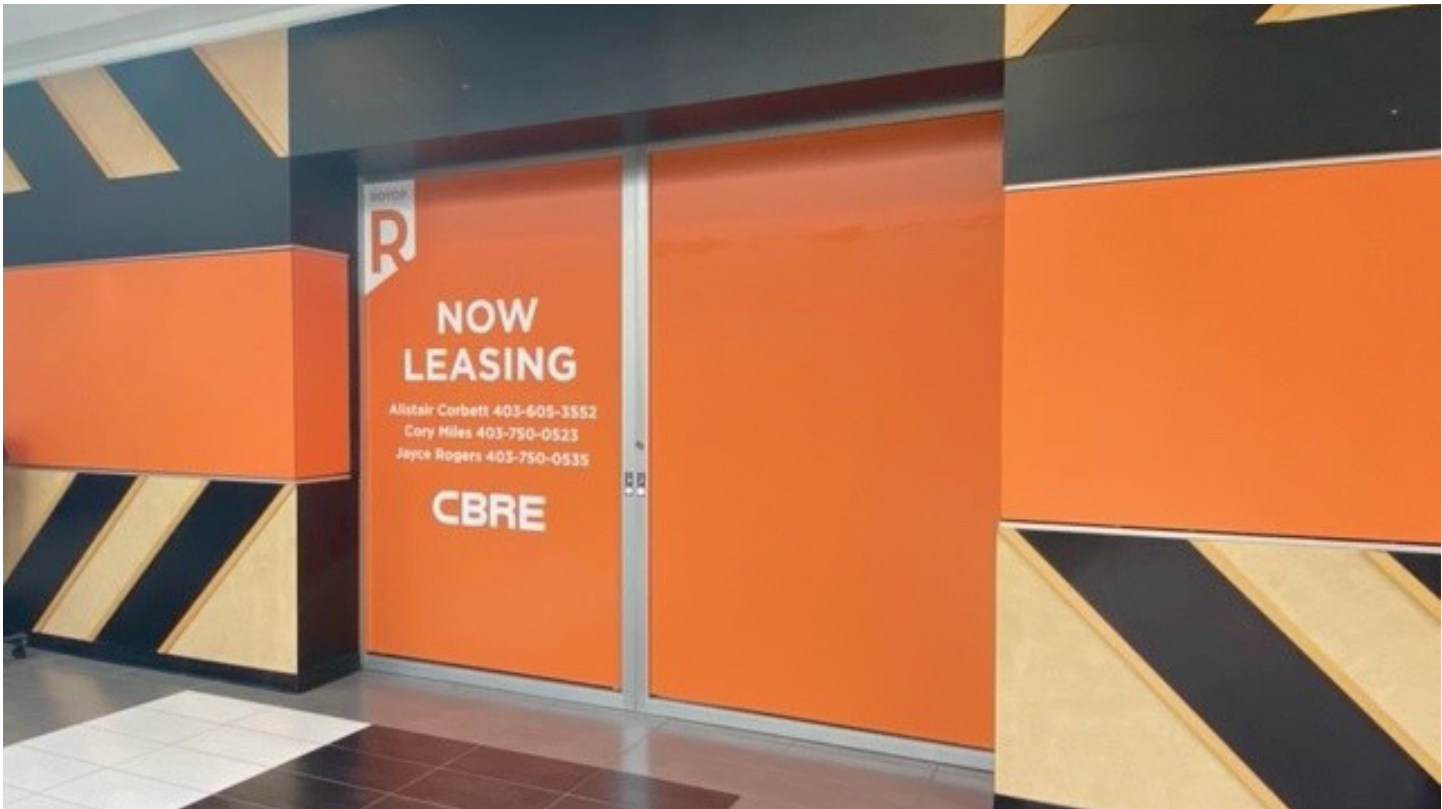
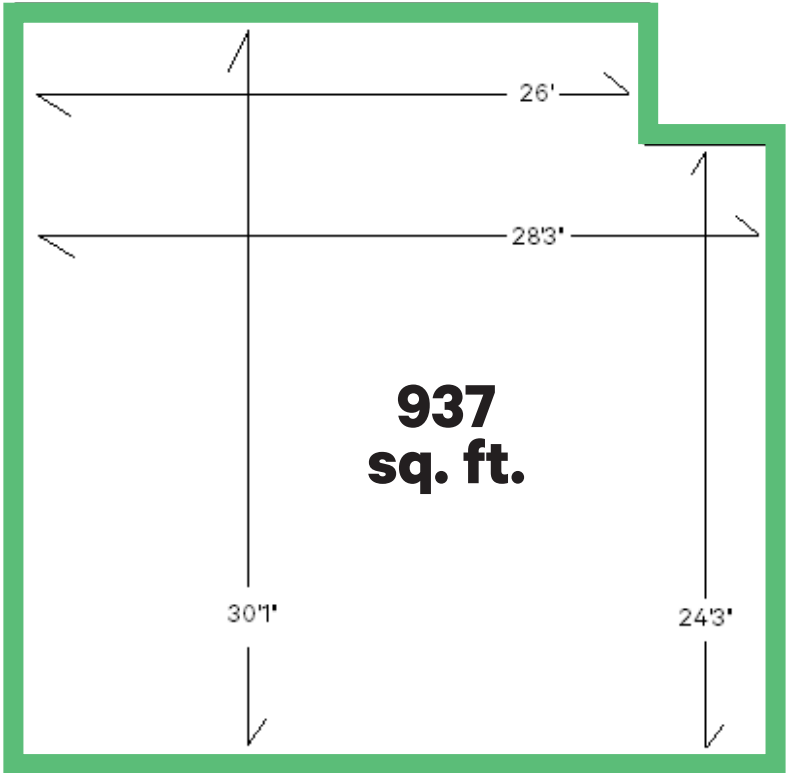


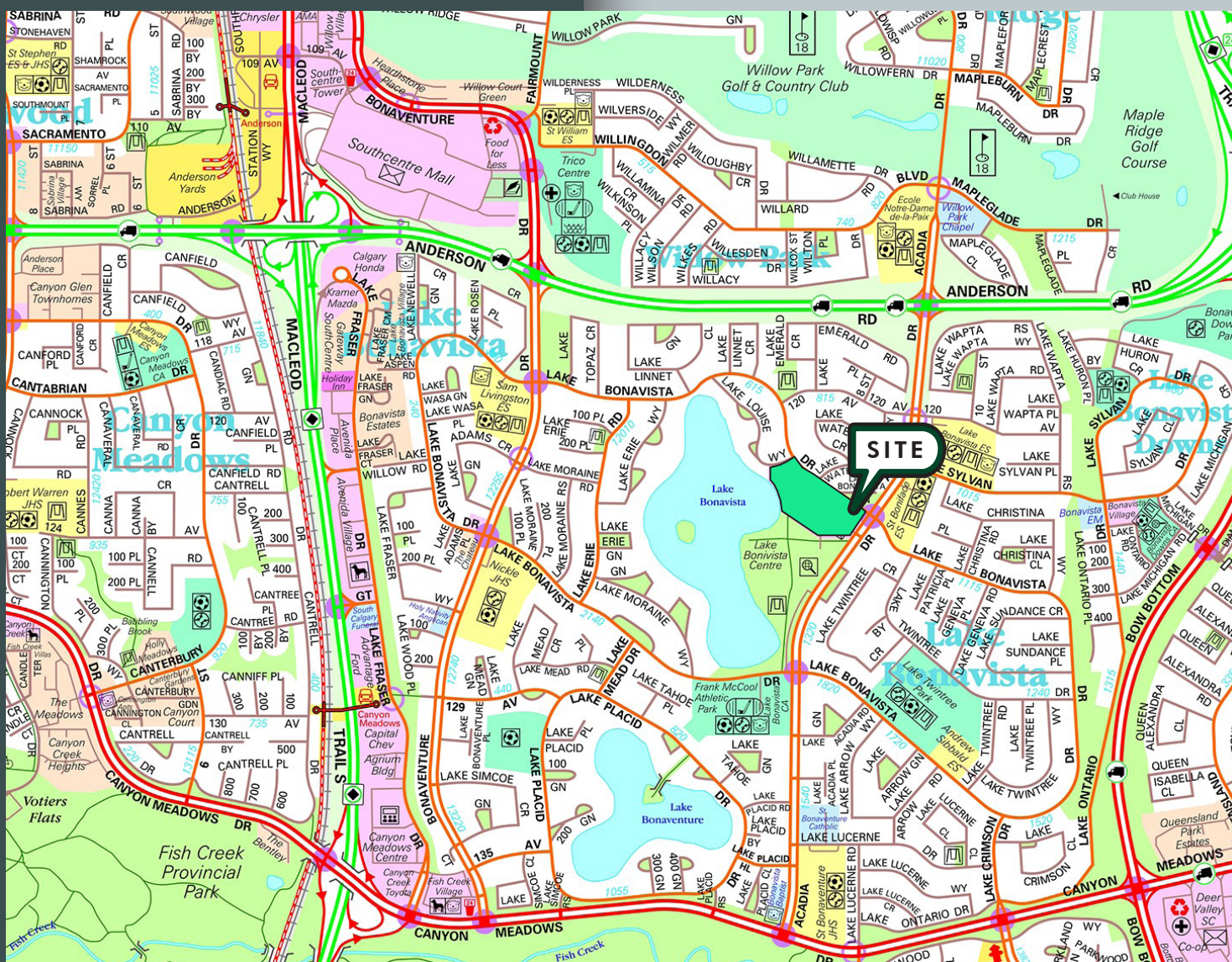
Photo - Unit 169



Unit 169 - Floor Plan







For More Information Please Contact

### Alistair Corbett

Senior Vice President

403.294.5709

alistair.corbett@cbre.com

### Cory Miles

Senior Sales Associate

403.750.0523

cory.miles@cbre.com

### Mac Marcinew

Sales Associate

587.583.7197

mac.marcinew@cbre.com

### Jayce Rogers

Transaction Manager

403.750.0535

jayce.rogers@cbre.com

### Brandy Chorney

Marketing Specialist

403.303.3609

brandy.chorney@cbre.com

CBRE Calgary

Eighth Avenue Place

East Tower 525 8 Avenue SW Suite 3200

Calgary, Alberta T2P 1G1

This disclaimer shall apply to CBRE Limited, and to all divisions of the Corporation ("CBRE"). The information set out herein (the "Information") has not been verified by CBRE, and CBRE does not represent, warrant or guarantee the accuracy, correctness and completeness of the Information. CBRE does not accept or assume any responsibility or liability, direct or consequential, for the Information or the recipient's reliance upon the Information. The recipient of the Information should take such steps as the recipient may deem necessary to verify the Information prior to placing any reliance upon the Information. The Information may change and any property described in the Information may be withdrawn from the market at any time without notice or obligation to the recipient from CBRE. Mapping Sources: Canadian Mapping Services [canadamapping@cbre.com](mailto:canadamapping@cbre.com); DMTISpatial, Environics Analytics, Microsoft Bing, Google Earth. Map© 2024 Sherlock Publishing Ltd.

**CBRE**

