

**FOR LEASE**  
\$33.00/SF Gross

Professional Office Space | 3660 SW 30th Avenue, Palm City, FL 34990



*Presented By:*

**NAI Southcoast**

**Douglas Legler**

Principal | Broker Associate

+1 772 405 7778

douglas@naisouthcoast.com

**Casey Combs**

Broker Associate

+1 772 285 8769

ccombs@naisouthcoast.com





## Property Details

**Location:** 3660 SW 30th Avenue  
Palm City, FL 34990

**Office Size:** ±1,235 SF

## Property Overview

Located at a primary entrance to Palm City, this upscale property serves a desirable community with strong demographics.

Easy access to the FL Turnpike and I-95 allow this property to conveniently serve customers from Palm City and beyond. In addition, the Veterans Memorial Bridge provides a direct link into Stuart.

The space can accommodate a variety of professional services with the layout including a welcoming reception area, multiple private offices, and waiting area.

Additional amenities include a kitchenette and access to the second-floor balcony.

Join other established professional tenants, where customers enjoy high-end common spaces and ample parking!

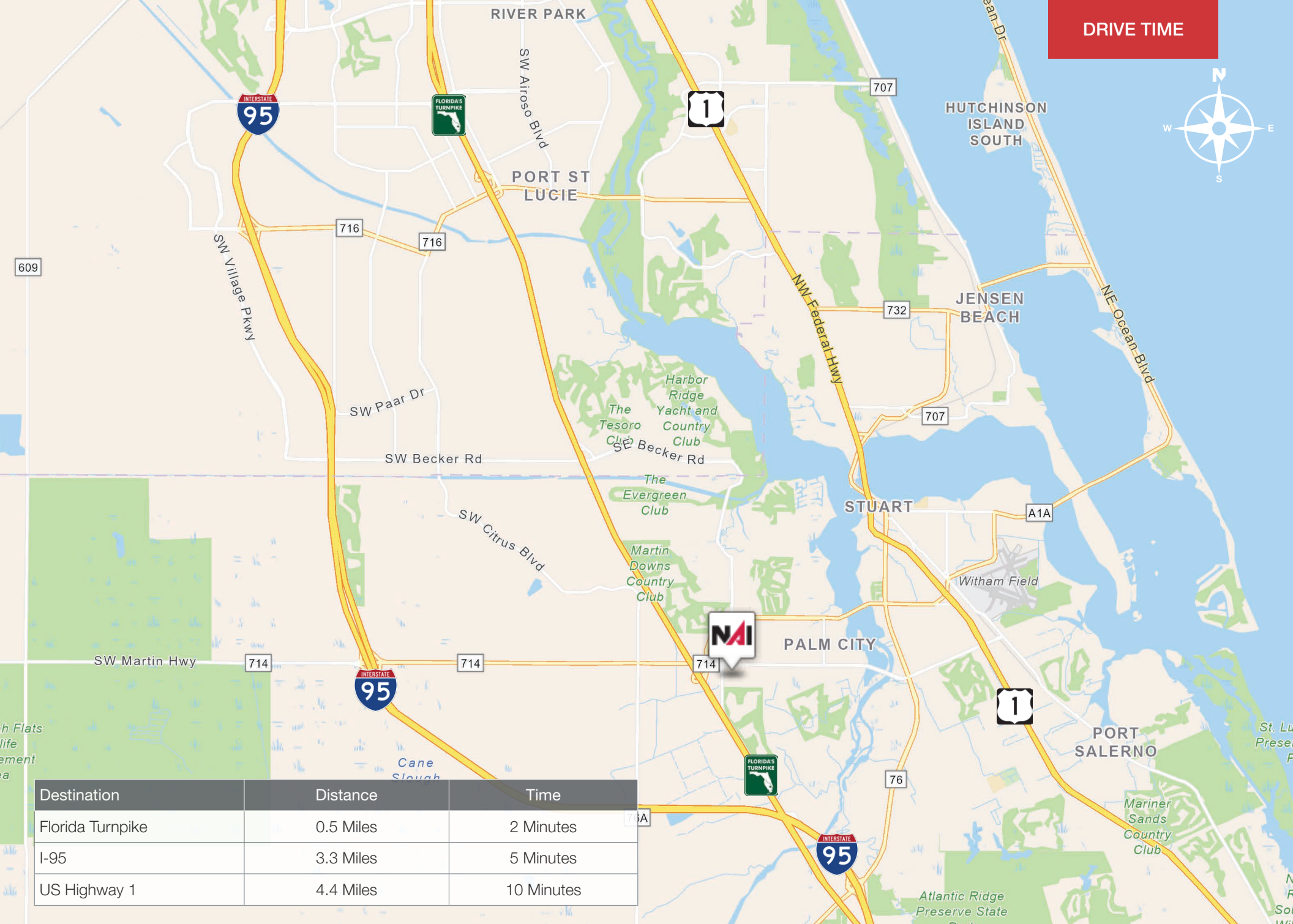
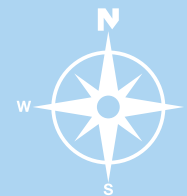


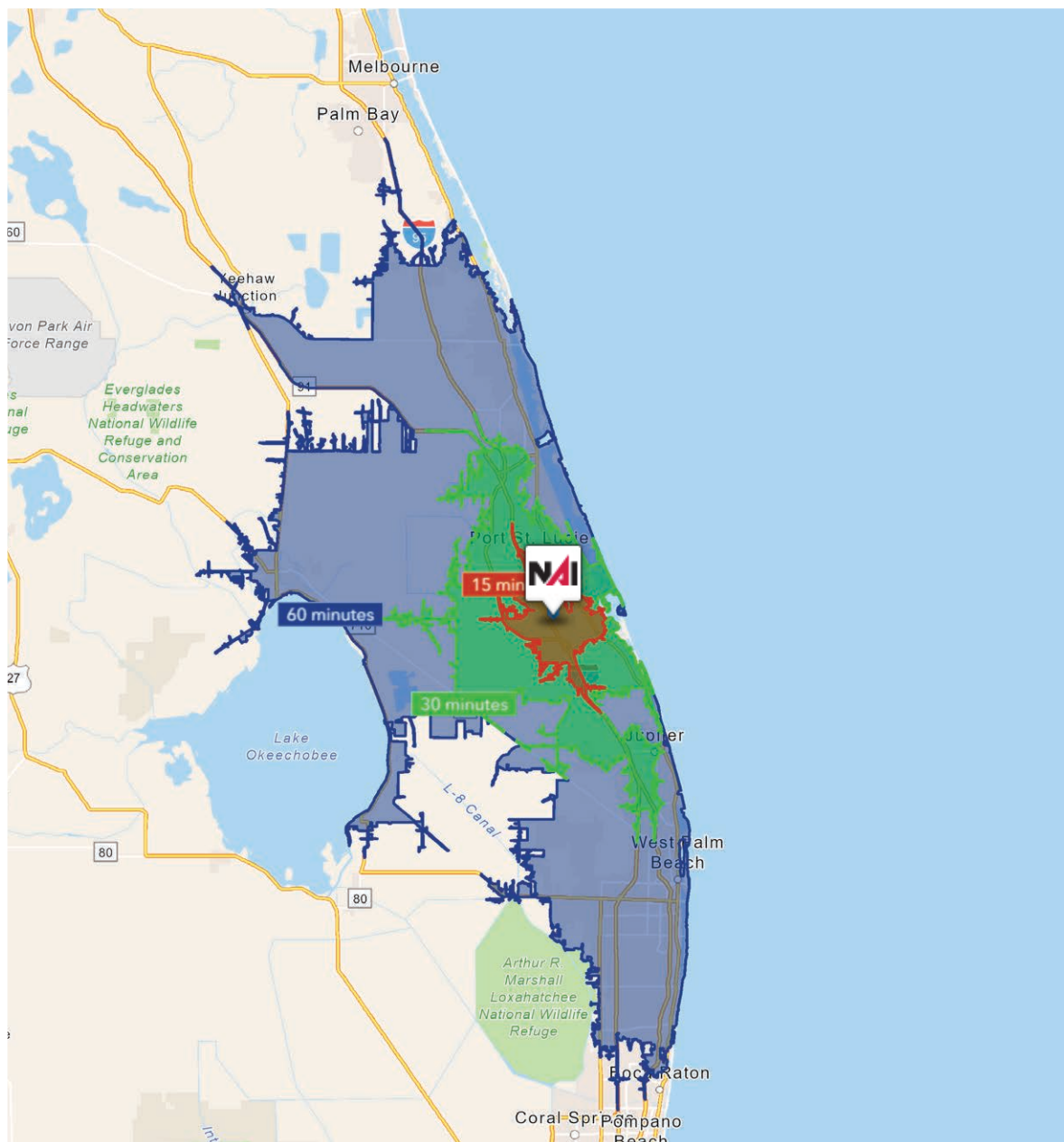






DRIVE TIME





## 15 Minutes

**78,078**  
2010 Population

**95,855**  
2025 Population

**22.77%**  
2010-2025  
Population Growth

**0.98%**  
2025-2030 (Annual)  
Est. Population Growth

**48.0**  
2025 Median Age

**\$120,909**  
Average Household  
Income

**47.6%**  
Percentage with  
Associates Degree  
or Better

**59.9%**  
Percentage in White  
Collar Profession

## 30 Minutes

**405,694**  
2010 Population

**520,801**  
2025 Population

**28.37%**  
2010-2025  
Population Growth

**1.63%**  
2025-2030 (Annual)  
Est. Population Growth

**47.7**  
2025 Median Age

**\$120,513**  
Average Household  
Income

**47.6%**  
Percentage with  
Associates Degree  
or Better

**61.6%**  
Percentage in White  
Collar Profession

## 60 Minutes

**1,668,145**  
2010 Population

**2,015,976**  
2025 Population

**20.85%**  
2010-2025  
Population Growth

**0.98%**  
2025-2030 (Annual)  
Est. Population Growth

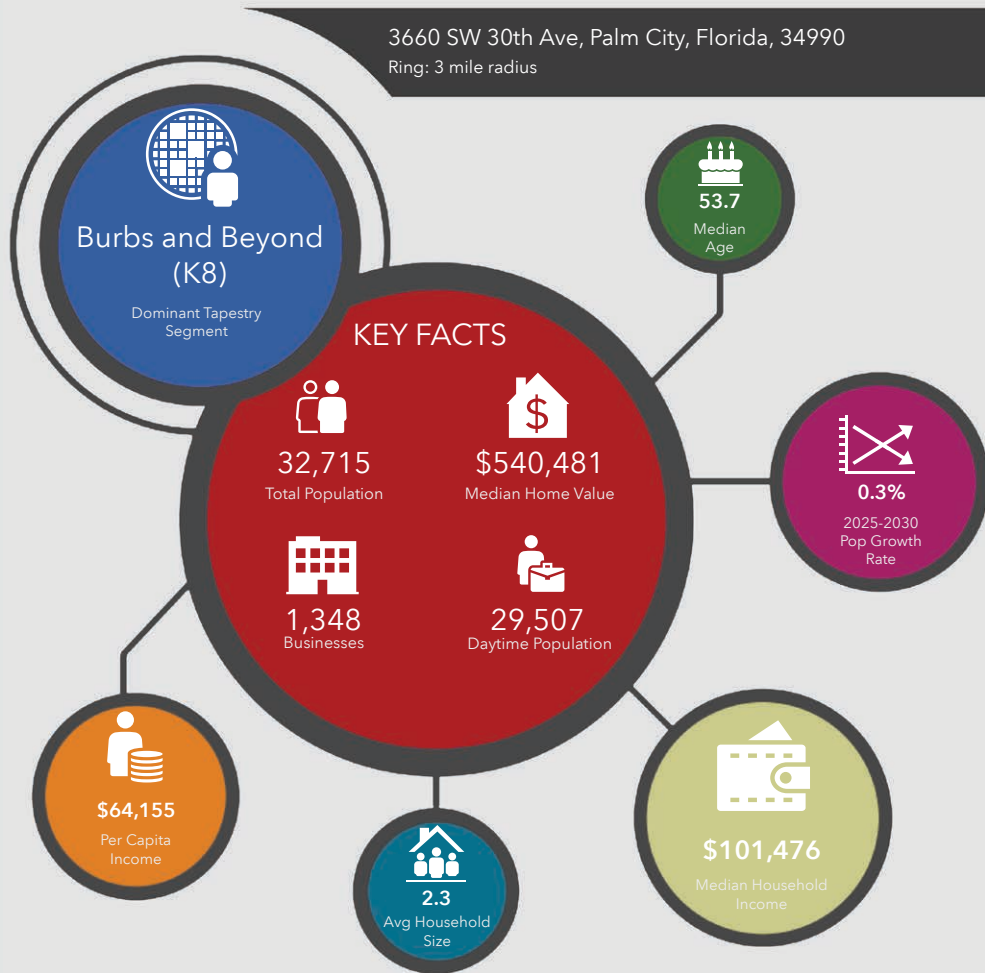
**46.8**  
2025 Median Age

**\$122,885**  
Average Household  
Income

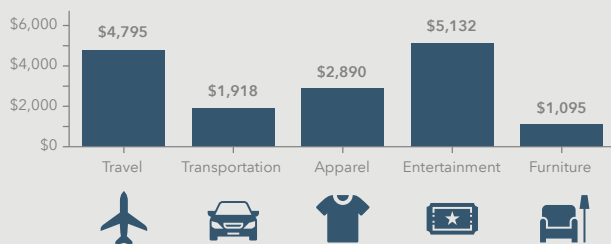
**48.2%**  
Percentage with  
Associates Degree  
or Better

**60.3%**  
Percentage in White  
Collar Profession

3660 SW 30th Ave, Palm City, Florida, 34990  
Ring: 3 mile radius



#### KEY SPENDING FACTS



**NAISouthcoast**  
COMMERCIAL REAL ESTATE SERVICES, INC.

**Source:** This infographic contains data provided by Esri (2025, 2030), Esri-Data Axle (2025), Esri-U.S. BLS (2025).

© 2025 Esri

Spending facts are average annual dollars per household

#### Population

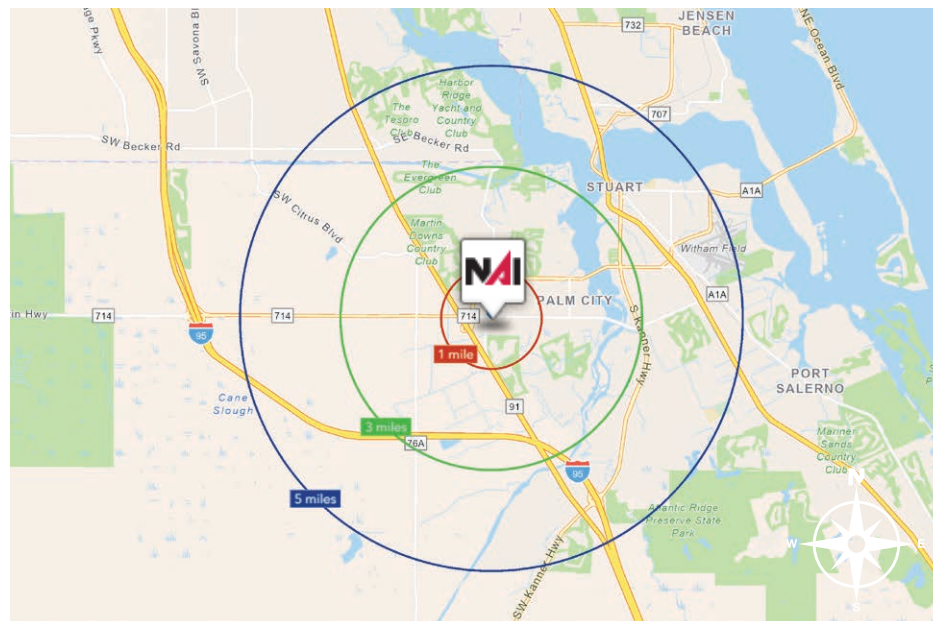
1 Mile:	5,546
3 Mile:	32,715
5 Mile:	79,877

#### Average Household Income

1 Mile:	\$132,423
3 Mile:	\$145,369
5 Mile:	\$126,413

#### Median Age

1 Mile:	47.1
3 Mile:	53.7
5 Mile:	51.0







## Palm City, Florida

Palm City, situated in Martin County, Florida, is a captivating blend of natural beauty and suburban charm. Nestled along the St. Lucie River, this scenic town offers a tranquil escape from the bustling cities nearby. Renowned for its lush landscapes, Palm City showcases an array of palm trees and well-manicured greenery, painting a picturesque backdrop against the Florida sky.

The community prides itself on a family-friendly atmosphere, with top-rated schools, safe neighborhoods, and a strong sense of camaraderie. Residents enjoy a range of recreational opportunities, including boating, fishing, and golfing, thanks to the area's proximity to water bodies and golf courses. The historic downtown area exudes a quaint ambiance, hosting local boutiques, eateries, and cultural events that reflect the town's unique character.

Palm City's location offers easy access to both the Atlantic Coast and the Gulf of Mexico, making it a haven for water enthusiasts and nature lovers. The warm climate ensures year-round outdoor enjoyment, while the town's commitment to preserving its natural surroundings contributes to a sustainable and eco-friendly lifestyle.

Palm City, Florida, is more than just a location; it's a lifestyle embraced by those who value a balance between nature's splendor and modern comforts. Whether you seek serene landscapes, engaging community activities, or a peaceful haven to call home, Palm City invites you to experience its one-of-a-kind charm.



## Martin County, Florida

The cities that make up Martin County include Jensen Beach/Rio, Stuart/Sewall's Point, Hutchinson Island, Hobe Sound, Jupiter/Tequesta, Palm City, Port Salerno and Indiantown. Martin County is a wonderful place to visit and live, with beaches, golf, fishing and boating. The County boasts arts, quaint downtowns with shops, gourmet dining, galleries, museums, historic places, festivals and more.

### *Martin County is for...*

The golf enthusiast... Martin County is home to over 35 world-class golf courses all within a 15-mile radius. The sun worshiper... The County offers its visitors and residents alike some of the finest beaches on the east coast. The discriminating arts shopper... More than 20 galleries participate in a monthly First Thursday gallery night. Many of these galleries are in the historic downtowns of Stuart, Jensen Beach, Port Salerno and Hobe Sound. The music lover... The historic Lyric Theatre offers a wide array of first-class talent nearly 300 days a year... This acoustically amazing theatre features concerts for all music lovers, from classical to rock and roll, and theatrical performances by local and national talent.

Mark your calendars for a plethora of events to look forward to in Martin County, Florida. The Stuart Air Show, Stuart Boat Show, ArtsFest, and the Martin County Fair are just some of the many events taking place throughout the year. The Treasure Coast Children's Museum, located at Indian Riverside Park, is a great place for kids and families, offering a water play area, fishing, and a riverfront view. Often, there are events in the park including concerts, orchid shows, and more. Indian Riverside Park also features the Maritime and Yachting Museum. Hutchinson Island is home to the Elliott Museum which celebrates the genius of innovation, creativity and the historical events of Martin County. Named after the prolific inventor Sterling Elliott, the museum hosts permanent exhibits showcasing Model A Trucks, early transportation, the history of Stuart and its surrounding regions, and baseball memorabilia. For the scientifically minded and curious kids, the Florida Oceanographic Coastal Center offers fun opportunities to learn about our local ecosystem.

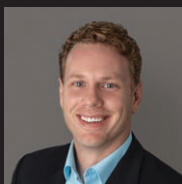






## Professional Office Space

3660 SW 30th Avenue, Palm City, FL 34990



Douglas Legler  
Principal | Broker Associate  
+1 772 405 7778  
douglas@naisouthcoast.com



Casey Combs  
Broker Associate  
+1 772 285 8769  
ccombs@naisouthcoast.com

FOR LEASE:  
**\$33.00/SF Gross**