



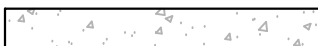


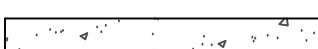


**LEGEND**

-  PROPERTY LINE
-  PROPERTY SETBACK LINE
-  PROPOSED BUILDING LINE
-  PROPOSED BUILDING CANOPY
-  HEAVY DUTY CONCRETE PAVEMENT
-  ASPHALT PAVEMENT
-  HEAVY DUTY ASPHALT PAVEMENT
-  CONCRETE SIDEWALK

**GENERAL NOTES:**

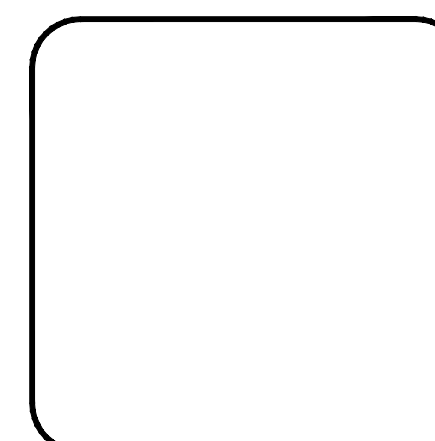
1. ASSUMED 4 EMPLOYEES AT EACH UNIT TO DETERMINE PARKING REQUIREMENT OF 8 SPACES PER UNIT.
2. PARKING REQUIREMENT BASED ON THE FOLLOWING USES UNDER LIGHT INDUSTRIAL:
  - 2.1. DISTRIBUTION FACILITY - 1/10,000 SF WITH MIN. OF 2 PER EMPLOYEE ON PREMISES AT ONE TIME, NO FEWER THAN 2 SPACES.
  - 2.2. LIGHT MANUFACTURING PLANT - 1/2,000 SF WITH A MIN. OF 1 PER 2 EMPLOYEES ON PREMISES AT ONE TIME, NO FEWER THAN 2 SPACES.
  - 2.3. MANUFACTURING - 1/2,000 SF WITH A MIN. OF 2 PER EMPLOYEE ON PREMISES AT ONE TIME, NO FEWER THAN 2 SPACES.



**BRIDGEPOINT, LLC**  
 2095A COOKS RD.  
 MOUNT JULIET, TENNESSEE  
 37133-4533-9000  
 WWW.BRIDGEPOINTTN.COM

No.	Revision/Issue	Date

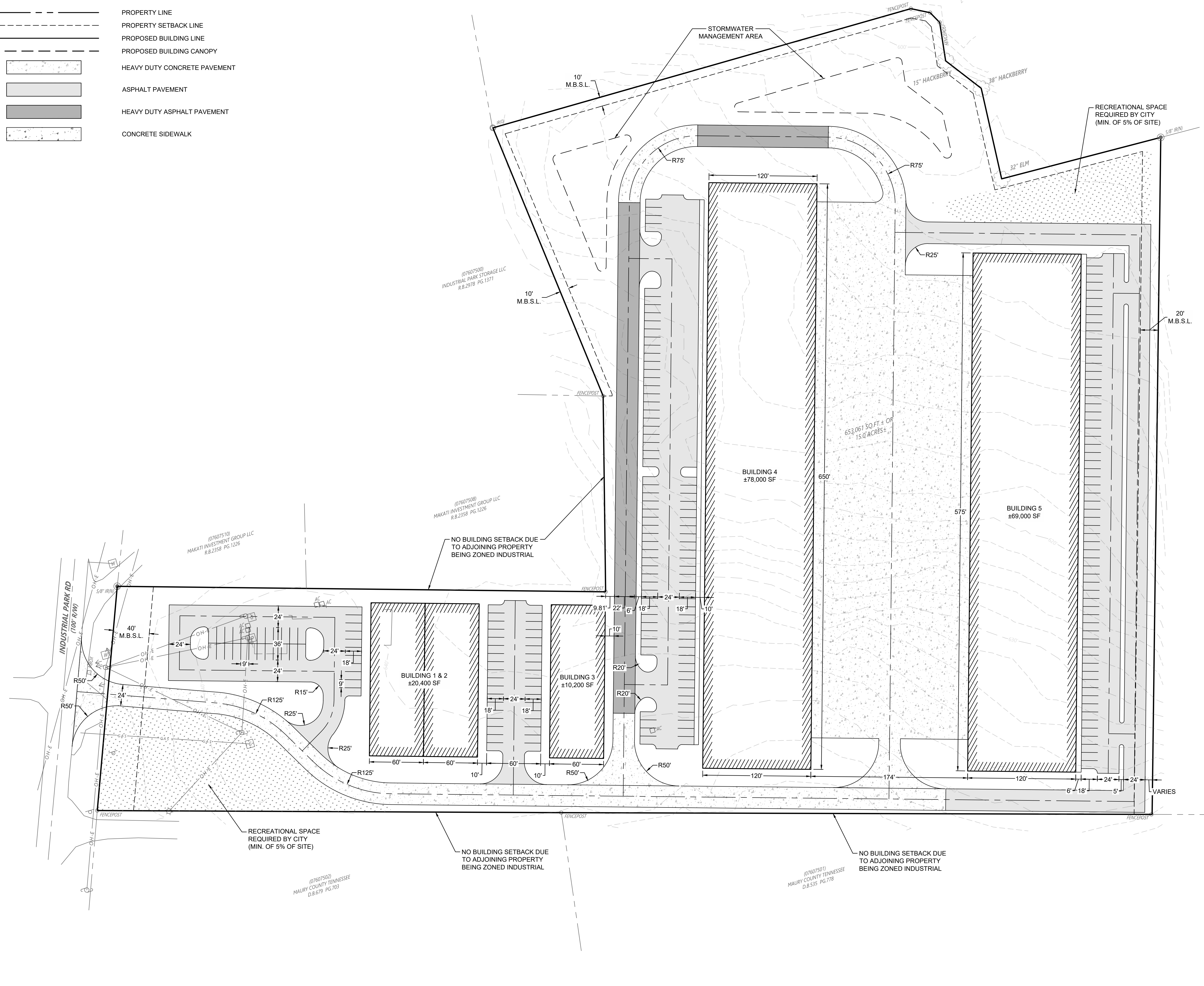
SITE PLANS  
FOR  
**FREELAND MANAGEMENT  
INDUSTRIAL DEVELOPMENT**  
 1230 INDUSTRIAL PARK RD  
 CITY OF COLUMBIA, TENNESSEE  
 MAURY COUNTY, TENNESSEE



**CONCEPTUAL #3**

DATE:	10/24/2024	DRAWN BY:	JMD
DRAWING SCALE:	AS SHOWN	CHECKED BY:	JMD
PROJECT NO.:	24-049	APPROVED BY:	

SHEET NUMBER:  
**CP-03**



M:\Bridgepoint\Team\Tolbert\Projects\2024\CP-03\CP-03.dwg, 10/24/2024, 4:52:21 PM, DWG, To: PDF, Job: ARCH, Full View, D: 0.001, 1: 0.001, 1: 0.001