

# For Sale

## List Price \$350,000

### 804 Lincoln St, Rhinelander, WI

Adjacent Building Also Available for Sale



#### 804 Lincoln St PROPERTY HIGHLIGHTS

**+/- 2174 Square Feet Main Floor**  
**Full Basement Unfinished**  
**Zoned B-3 General Business**  
**1 Bathrooms with Shower**  
**+/- 0.21 Acres**  
**Drive Through**  
**Gas Fireplace**  
**Large Reception Area**  
**2 Private Offices**  
**Kitchen**  
**Large Conference Area**  
**8-10 parking spaces**



#### CONTACT US

**PETE TENDERHOLT**

**715-360-0003**

**PTENDERHOLT@HOTMAIL.COM**

**DEB MANN**

**715-499-4470**

**DMANN@SHOREWEST.COM**

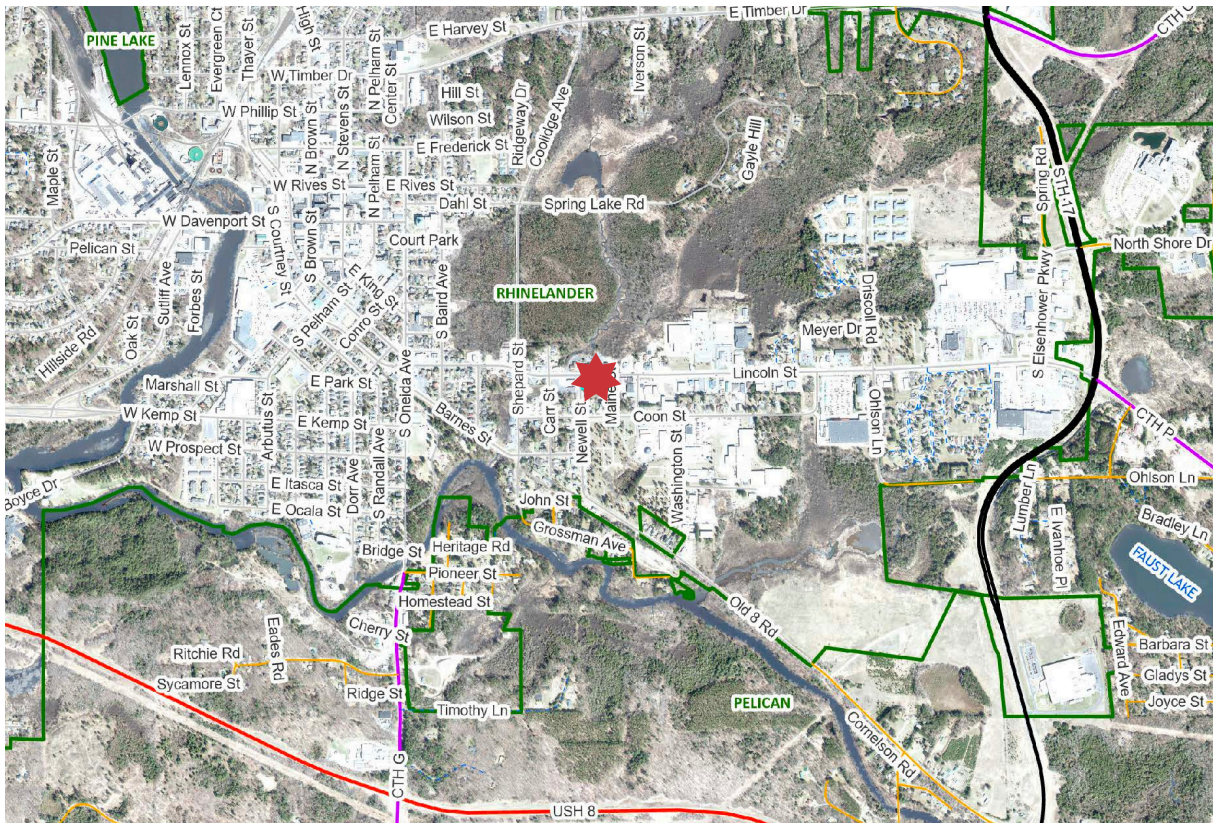




# 804 Lincoln St, Rhinelander, WI



## PROPERTY MAP *Rhinelande*, WI

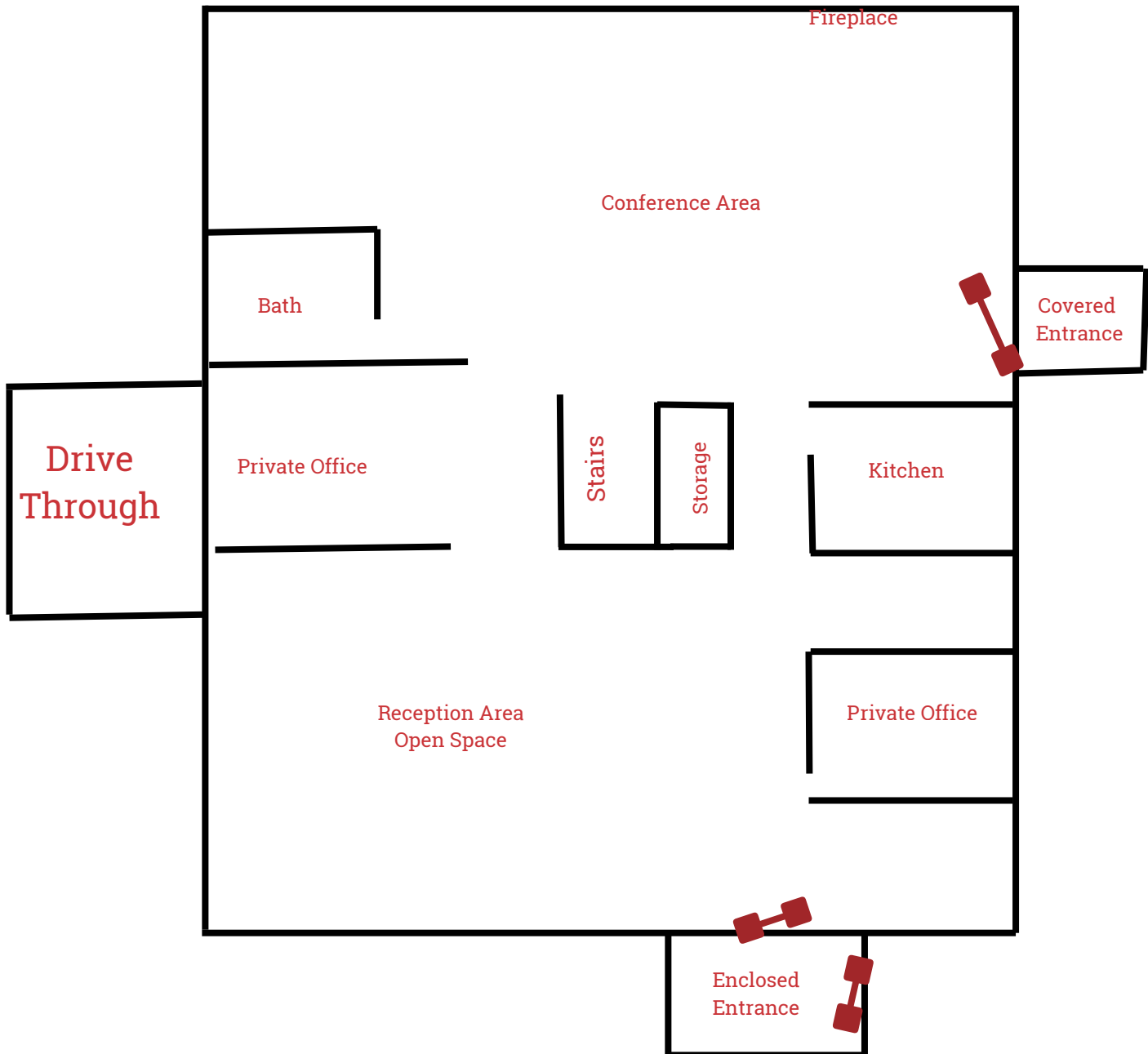


# 804 Lincoln St, Rhinelander , WI



## Floor Plan

**\*\*Floor Plan Approximate**





# 804 Lincoln St, Rhinelander , WI



## Oneida County

### Population

Rhinelander Population: 8,185

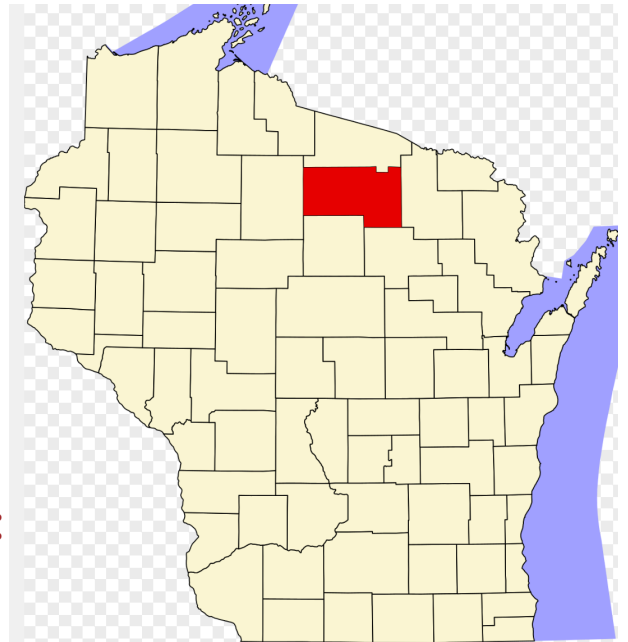
Oneida County Population: 37,845

### Median Family Income:

\$69,621

### Prominent Industries in the Region:

- Healthcare & Social Assistance
- Retail Trade
- Manufacturing
- Agriculture/Forestry/Fishing/Hunting
- Educational Services
- Mining/Quarrying/Oil/Gas Extraction
- Nicolet College



### Web links:

<https://www.ocedc.org>

<https://business.rhinelanderchamber.com>

<https://explorerhinelanders.com/>

<https://www.co.oneida.wi.us>

<https://oneidacountywi.com/>

This information has been obtained from sources believed reliable. We have not verified it and make no guarantee, warranty, or representation about it. Any projections, opinions, assumptions, or estimates used are for example only and do not represent the current or future performance of the property. You and your advisors should conduct a careful, independent investigation of the property to determine to your satisfaction the suitability of the property for your needs. Photos herein are the property of their respective owners and use of these images without the express written consent of the owner is prohibited.