

SUITE 1B - 2,200 SF AVAILABLE

223 HEATLEY ST

MONCKS CORNER, SC 29461



223 HEATLEY STREET MONCK'S CORNER, SC



PROPERTY HIGHLIGHTS

Discover a prime opportunity for your business on Heatley Street in Moncks Corner, SC. This commercial office space offers the perfect blend of functionality and professionalism in a highly desirable location. Boasting 2,200 square feet of versatile workspace, this well-appointed office is equipped to meet the needs of a variety of businesses.

PROPERTY FEATURES

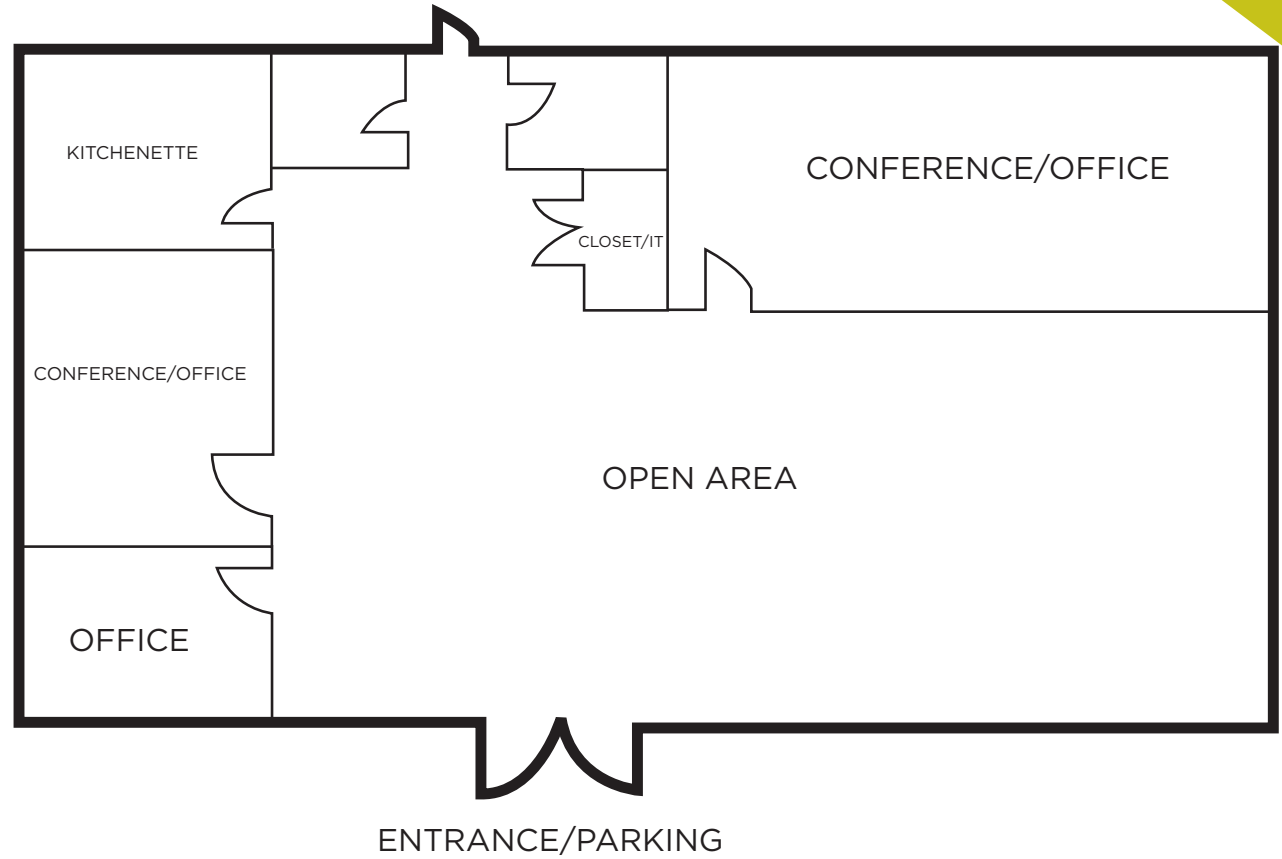
Building Size:	5,000 SF	Building Class:	B
Space Available:	Suite 1B 2,200 SF	Primary Use:	Office/Retail

Comments:

- Move-In ready office/retail space available
- Free surface parking
- Building signage & monument signage available
- Contact broker for more information

223 HEATLEY STREET MONCK'S CORNER, SC

FLOOR PLAN





FOR MORE INFORMATION, CONTACT:

BRADY DASHIELL

Senior Associate

843 724 0106

brady.dashiell@cushwake.com

NICK TANANA

Senior Director

843 724 0109

nick.tanana@cushwake.com

