



## UNIT AMENITIES

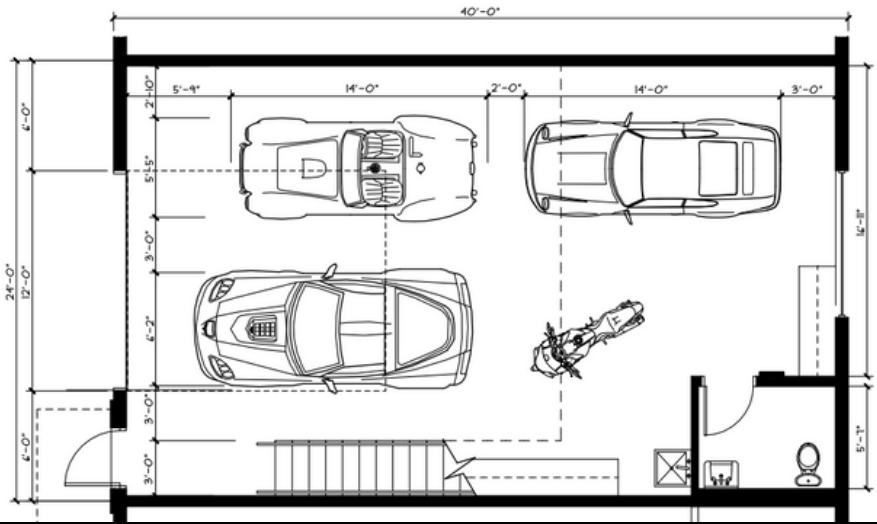
- CONCRETE BLOCK CONSTRUCTION
- PRECAST CONCRETE ROOF DECK WITH R-38 INSULATION AND TPO MEMBRANE COVERING
- 20'-21' CLEAR HEIGHT
- 12' WIDE BY 14' TALL IMPACT RATED ROLL DOORS
- SECURED STEEL ENTRY DOOR
- WIRED FOR INTERNET
- SPLIT SYSTEM DUCTLESS A/C
- READY MOUNT FOR CEILING FAN
- IMPACT WINDOWS ABOVE DOORWAYS AND ON BACK WALLS FOR SECURED NATURAL LIGHT
- FINISHED ADA-COMPLIANT BATHROOM WITH TOILET AND SINK
- WASH BASIN LOCATED OUTSIDE OF THE BATHROOM
- HIGH-BAY LED LIGHTING
- 100/125 AMP 240V SERVICE
- FULLY SPRINKLED WITH 1 HR FIRE-RATED OR BLOCK INTERIOR WALLS

## DEVELOPMENT AMENITIES

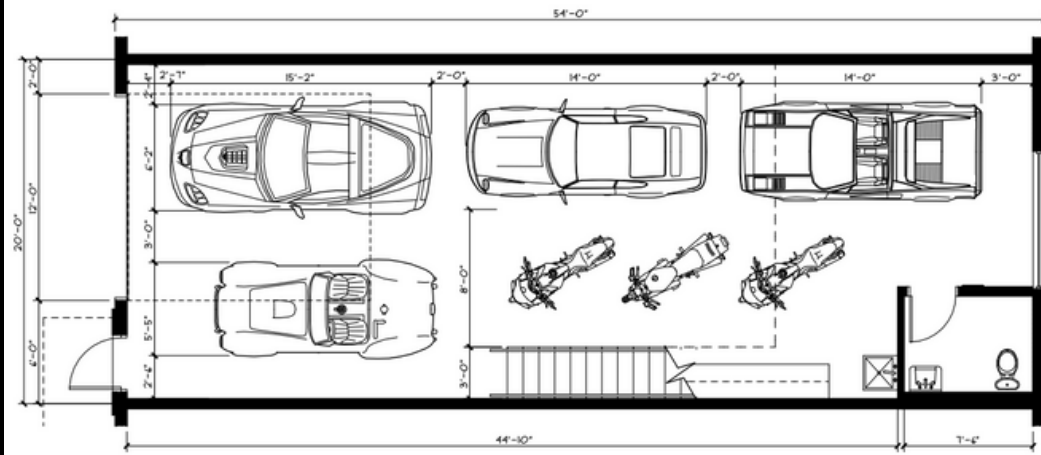
- TWO STORY PRIVATE CLUBHOUSE COMPLETE WITH MEETING SPACE, KITCHEN, BAR AREA, RESTROOMS, A SHOWER, WASHER AND DRYER, TVS, WIFI, OUTDOOR GREEN SPACE, AND A SECOND STORY COVERED PATIO DECK
- FORTIFIED CONCRETE WALL AROUND THE WHOLE PROPERTY
- AUTOMATIC GATED ENTRANCE
- FULLY SECURED VIDEO MONITORING THROUGHOUT
- 55' DRIVE AISLES FOR EASE OF ENTRY AND EXIT
- BROWN WATER RECEPTACLE
- DETAIL BAY
- LED SECURITY LIGHTING
- PROFESSIONALLY MANAGED



**motocave**  
LUXURY CAR CONDO



**24'X40'**



**20'X54'**

**motocave**

**20'X60'**

**24'X60'**

