



(206) 328 - 3333
Jill@hunterscapital.com
HuntersCapital.com

Ballou Wright Building

1517 12th Ave
Seattle, WA 98122



Positioned above Overcast Coffee, & among the vibrant Pike/Pine retail corridor including popular retail, grocery, & restaurants the Historic Ballou Wright Building has offices of varying sizes to suit your company's needs. Only a short walk from Cal Anderson Park and mass transit options as well as monthly parking available nearby!



Ballou Wright Building

- All utilities included
- Monthly parking available
- Original fir floors
- Bike storage
- Fiber internet with Century Link
- Passenger elevator
- High ceilings
- Large, operable windows
- Secured access

Mezzanine

Space Features

- \$28.00 PSF + \$9.63/SF NNN (includes ALL utilities)
- 3,474 SF
- Short Lease-Term Available
- Fiber internet with Century Link
- One Large Conference Room
- 3 Private Offices
- Full Kitchen
- Restroom
- Partially Furnished
- Direct Access to Elevator
- HVAC



[Click Here for a
3D Tour](#)

3,474 SF



Suite 203

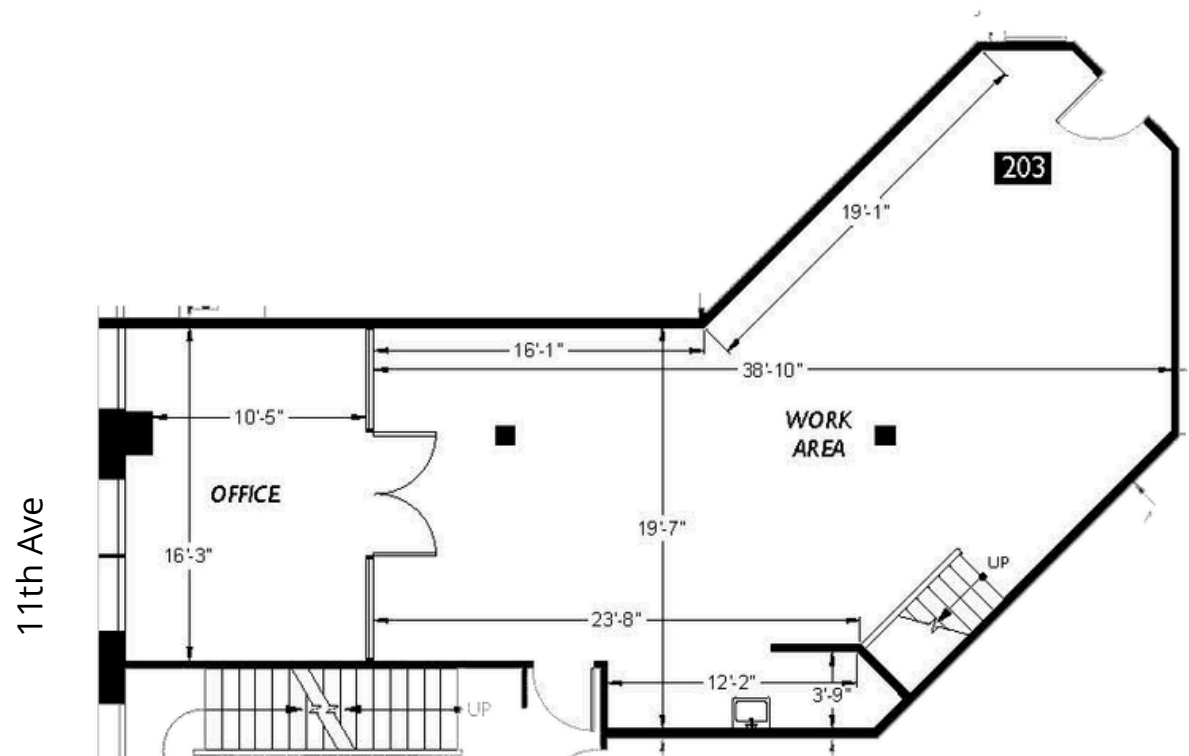
Space Features

- \$28.00 PSF + \$10.39/SF NNN (includes ALL utilities)
- 1,231 SF
- Fiber internet with Century Link
- One Large Conference Room
- Loft Storage Space
- Kitchenette Area
- 14' Ceilings
- Shared Restroom and Shower Facilities



[Click Here for a
3D Tour](#)

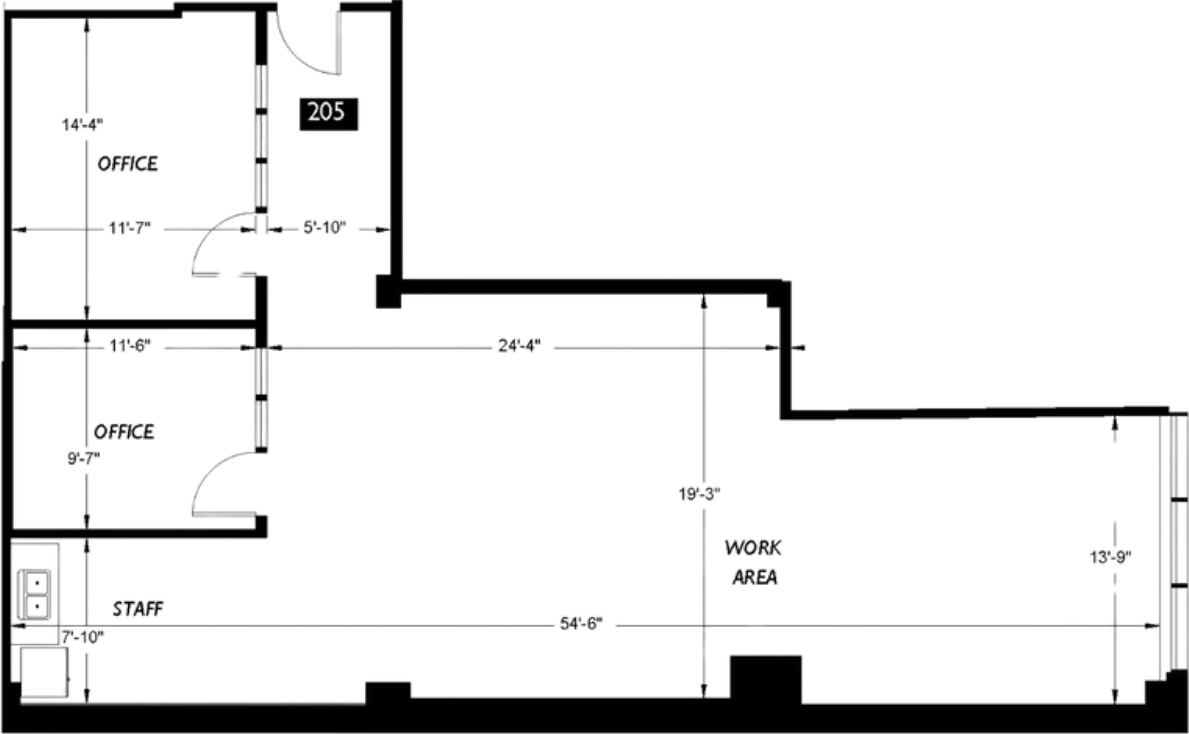
1,231 SF



Suite 205

Space Features

- \$28.00 PSF + \$10.38/SF NNN (includes ALL utilities)
- 1,432 SF
- Fiber internet with Century Link
- 14' Ceilings
- 2 Conference Rooms/ Private Offices
- Kitchenette
- Loft Storage Space
- Shared Restroom and Shower Facilities



[Click Here for a
3D Tour](#)

1,432 SF

Suite 207

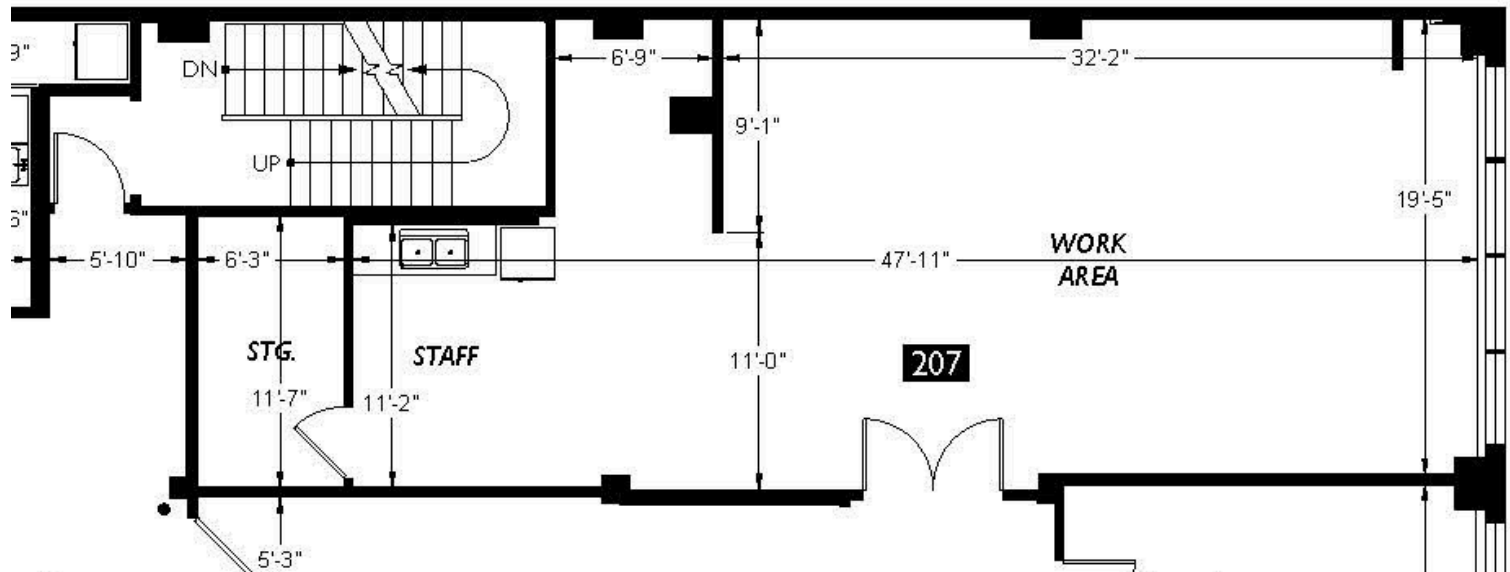
Space Features

- \$28.00 PSF + \$11.21/SF NNN (includes ALL utilities)
- 1,104
- Fiber internet with Century Link
- Kitchenette
- Loft Storage Space
- Copy Room/ Private Office
- 14' Ceilings
- Shared Restroom and Shower Facilities



[Click Here for a 3D Tour](#)

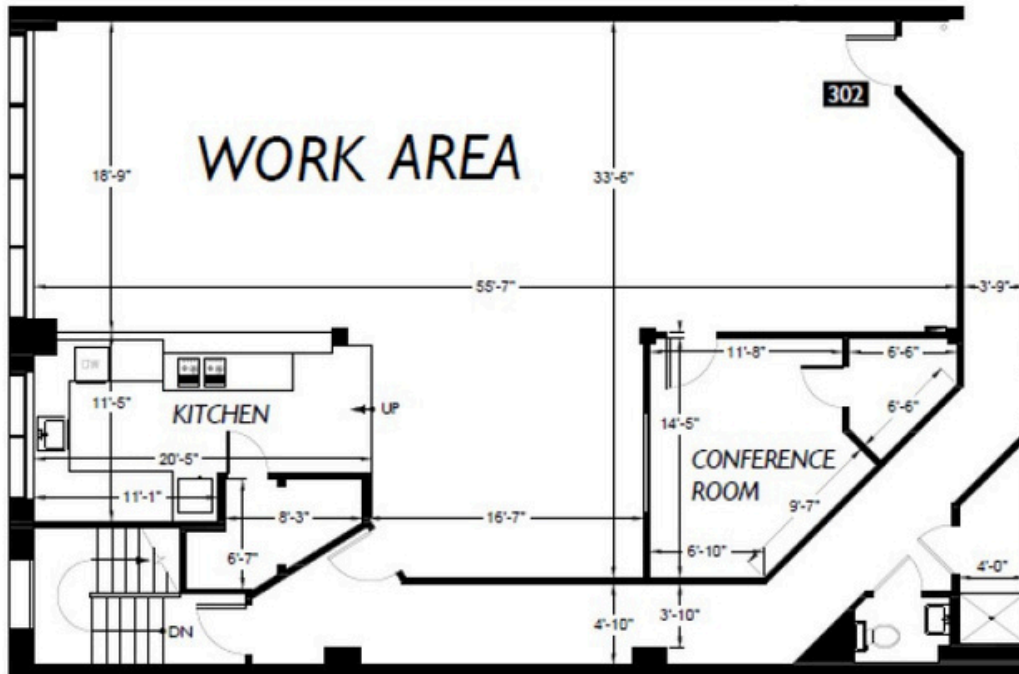
1,104SF



Suite 302

Space Features

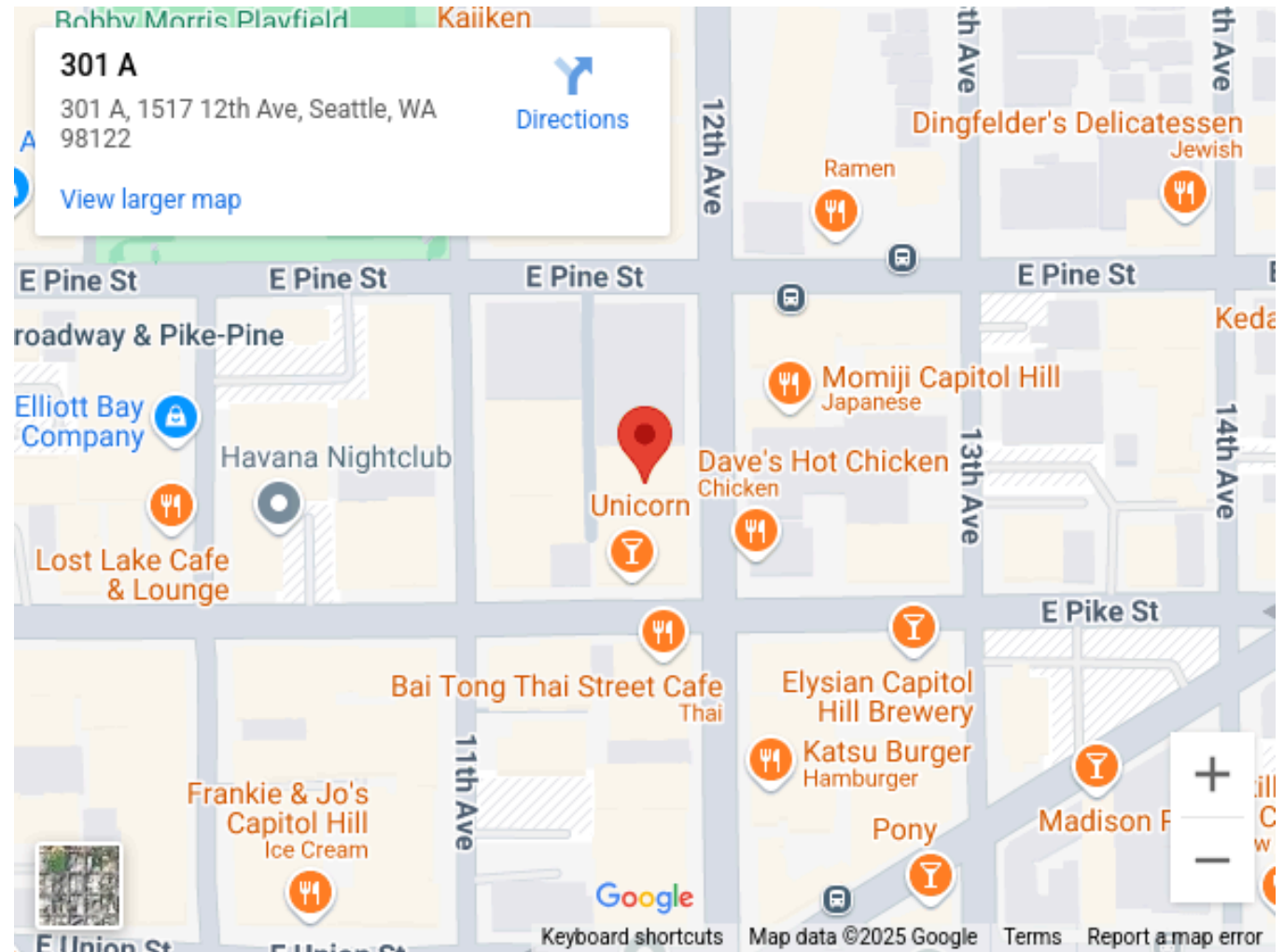
- \$29.00 PSF + \$10.39/SF NNN (includes ALL utilities)
- 2,140 SF
- Short Lease- Term Available
- Fiber internet with Century Link
- 14' Ceilings
- Full Kitchen
- 1 Conference Room
- 1 Phone Room
- Loft Storage Space
- HVAC
- Shared Restroom and Shower Facilities



[Click Here for a 3D Tour](#)

2,140 SF

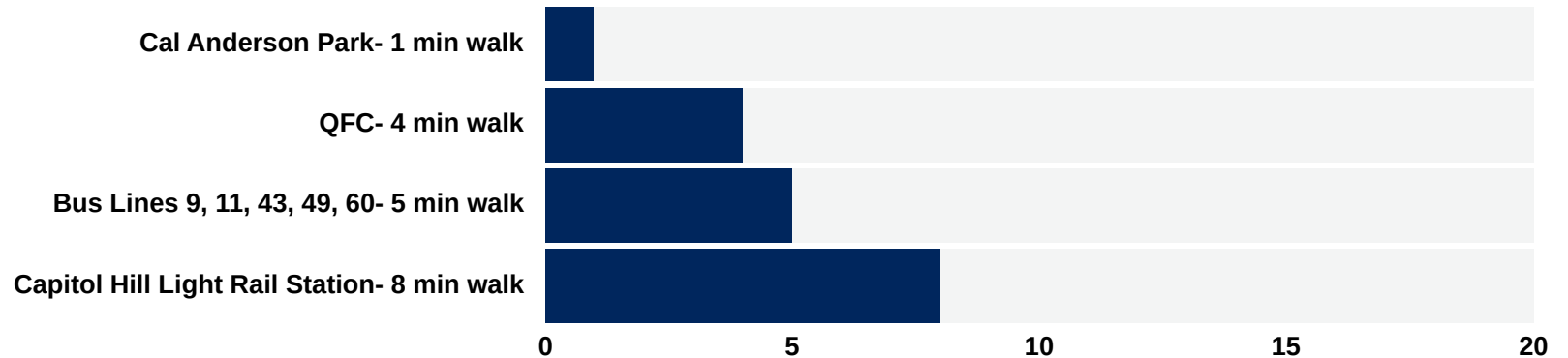
NEIGHBORHOOD



Amenities:







- **Restaurants/Bars:**
 - Overcast Coffee Co.
 - Poquitos
 - U:Don
 - Molly Moon's
 - Gyro Saj
 - Old Street Malatang
 - Emerald City Smoothie
 - Chipotle
 - Rachel's Ginger Beer
 - Cafe Vita
- **Services:**
 - QFC
 - Elliot Bay Book Co.
 - Blinks Art Materials
 - The UPS Store
 - Walgreens
- **Entertainment:**
 - Five Iron Golf
 - Cal Anderson Park
 - Chophouse Row

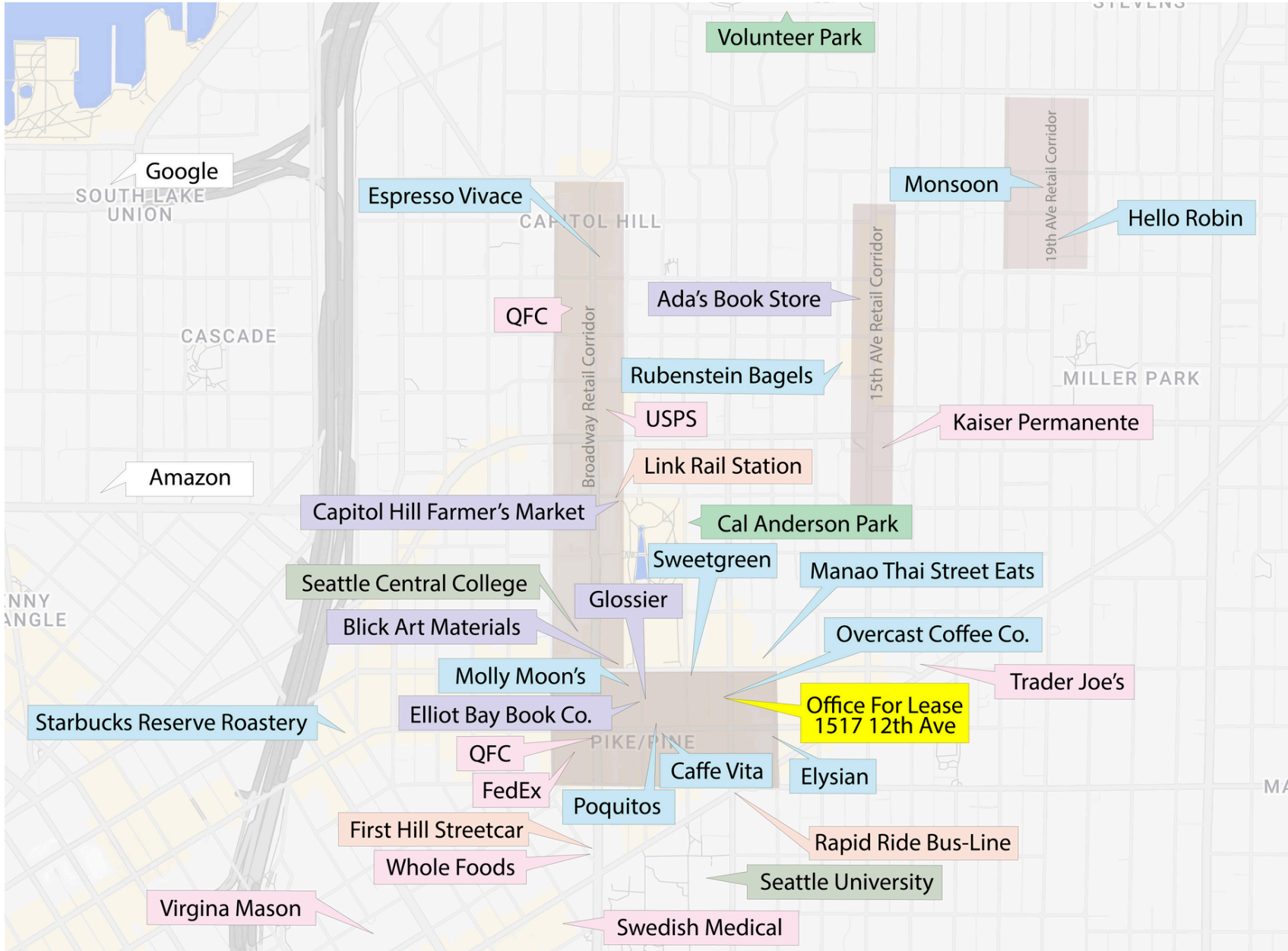
And Much More!



NEIGHBORHOOD

KEY

| | | | | | |
|---|-----------------|---|--------------------------|---|----------------|
|  | Retail Corridor |  | Restaurants, Bars, Cafes |  | Transportation |
|  | Shopping |  | Parks |  | Schools |
| | |  | | Grocery Stores & Services | |



URBAN INSPIRED
PRESERVATION MINDED
COMMUNITY DRIVEN

Hunters Capital preserves and revitalizes the character of Seattle's most historic neighborhoods. We pride ourselves in creating meaningful relationships with our tenants and driving community engagement within our wonderfully diverse city.

WE HAVE SPACE FOR YOU

Give us a call, or visit our website to learn more about our unique properties.

(206) 328 - 3333

www.hunterscapital.com

Jill@hunterscapital.com

1620 Broadway, Suite 200



Above: Local Coffee Shop in Retail of Ballou Wright Building

