

For lease

111 Congressional Blvd.
Carmel, IN 46032
20,000-78,000 SF available



Property Overview & Demographics

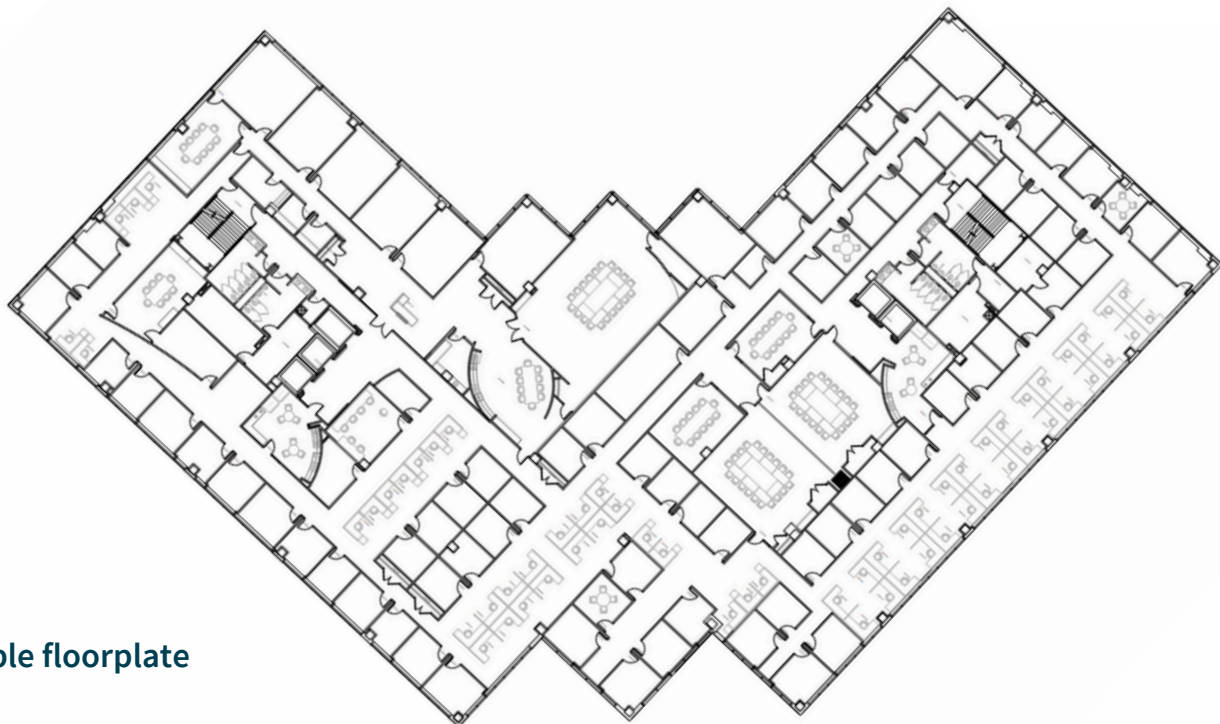
111 Congressional is a premier commercial building located in the heart of Carmel. With its strategic position near key highways, prominent corporate neighbors, and an abundance of amenities nearby, this property offers unparalleled convenience for both employees and clients. Expansive windows flood the interiors with natural light, creating an inspiring and productive work environment. From the state-of-the-art facilities to the thoughtfully curated common areas, 111 Congressional Boulevard provides an exceptional setting that reflects professionalism, innovation, and success.

Highlights

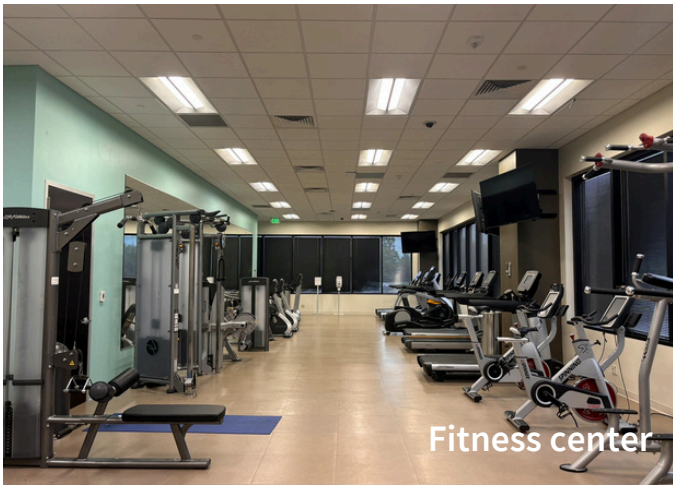
- Patio area
- Fitness center with showers/lockers
- Cafe
- Conference center
- Building signage available
- On-site security
- Furniture available
- Prime northside location

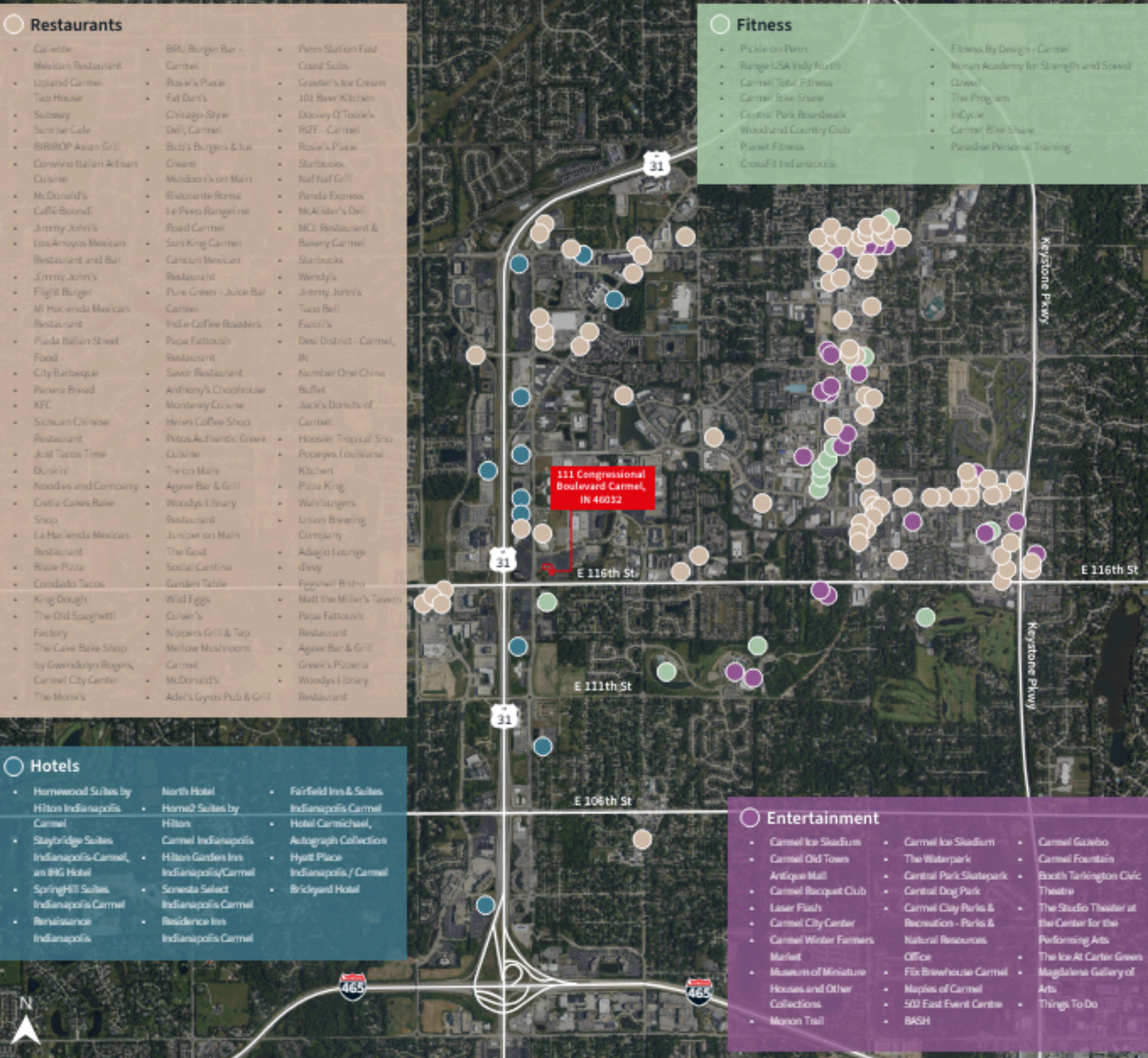


Location	Carmel
Bldg Size	177,947 SF
Class	A
Floors	5



Sample floorplate





JLL

John Robinson

Managing Director

John.Robinson@jll.com

+1 (317) 810-7172

Kevin Gillihan

Senior Vice President

Kevin.Gillihan@jll.com

+1 (317) 810-7355

Although information has been obtained from sources deemed reliable, neither Owner nor JLL makes any guarantees, warranties or representations, express or implied, as to the completeness or accuracy as to the information contained herein. Any projections, opinions, assumptions or estimates used are for example only. There may be differences between projected and actual results, and those differences may be material. The Property may be withdrawn without notice. Neither Owner nor JLL accepts any liability for any loss or damage suffered by any party resulting from reliance on this information. If the recipient of this information has signed a confidentiality agreement regarding this matter, this information is subject to the terms of that agreement. ©2024. Jones Lang LaSalle IP, Inc. All rights reserved.