

FLEX WAREHOUSE & OFFICE SPACE – SANDY, UT



Property Highlights

- 585 W 9400 S, Sandy, UT 84070
- +/- 8,000 SF
- Amps: 200 Volts: 360 Phase: 3
- Ample Parking
- Lease Rate: \$1.30 PSF
- Close Proximity to Freeway

This 8,000 SF property in Sandy features +/- 2,552 SF of warehouse space with 24' ceilings and a 12' x 14' overhead door. The two-level +/- 5,448 SF office includes private offices, conference rooms, workstations, and a break room/kitchen area. Ample designated and street parking. On building signage position available. Conveniently located near the 90th South I-15 interchange. Available for immediate occupancy. The space is flexible and suitable for a wide variety of tenants.

Please Contact:

Roger Woolstenhulme
Collin Cook

801.787.8388
801.360.8800

roger@wyngateproperties.com
collin@wyngateproperties.com

WYNGATE
PROPERTIES, INC

FLEX WAREHOUSE & OFFICE SPACE – SANDY, UT



Please Contact:

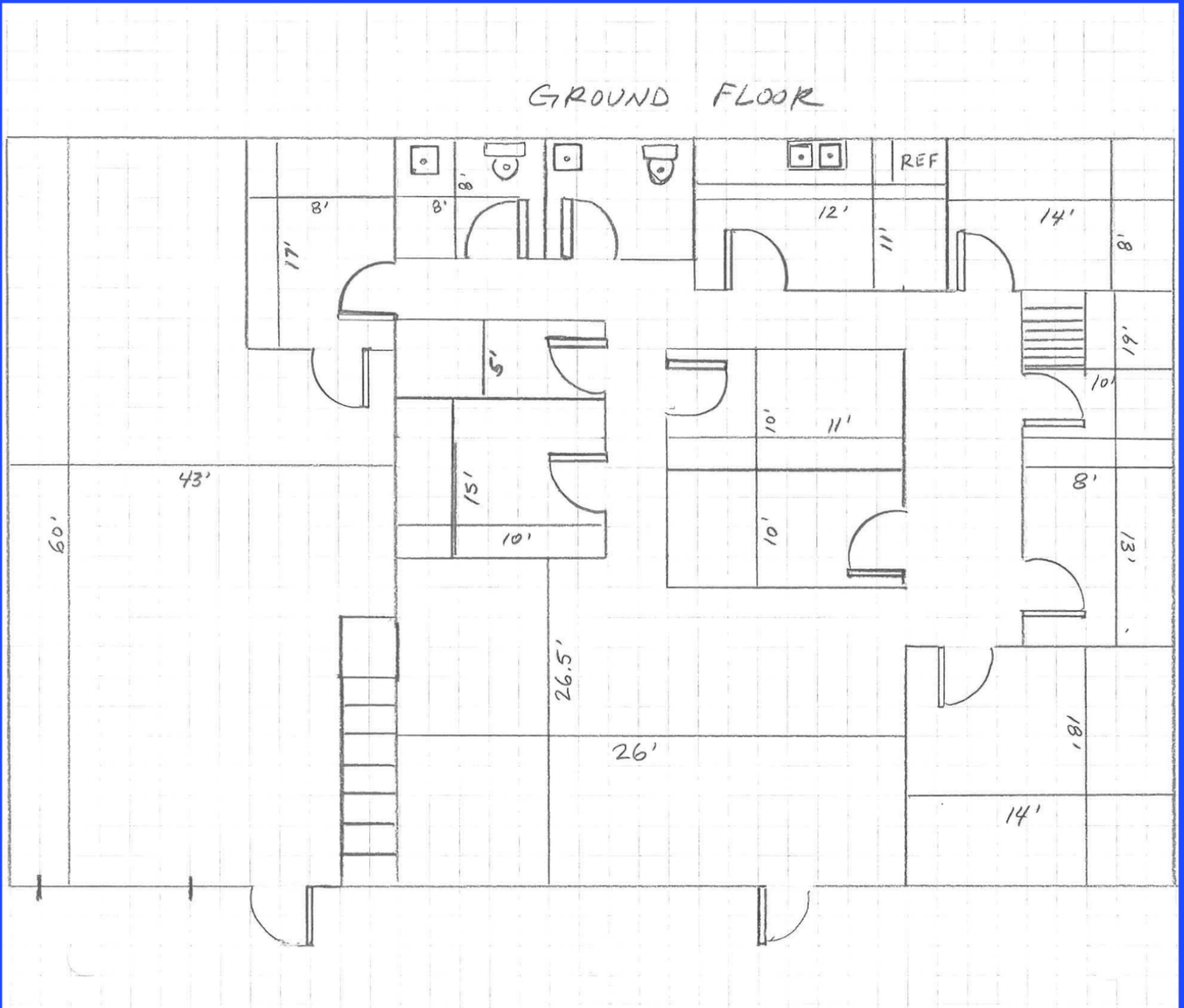
Roger Woolstenhulme
Collin Cook

801.787.8388
801.360.8800

roger@wyngateproperties.com
collin@wyngateproperties.com

WYNGATE
PROPERTIES, INC

FLEX WAREHOUSE & OFFICE SPACE – SANDY, UT



Please Contact:

Roger Woolstenhulme

801.787.8388

roger@wyngateproperties.com

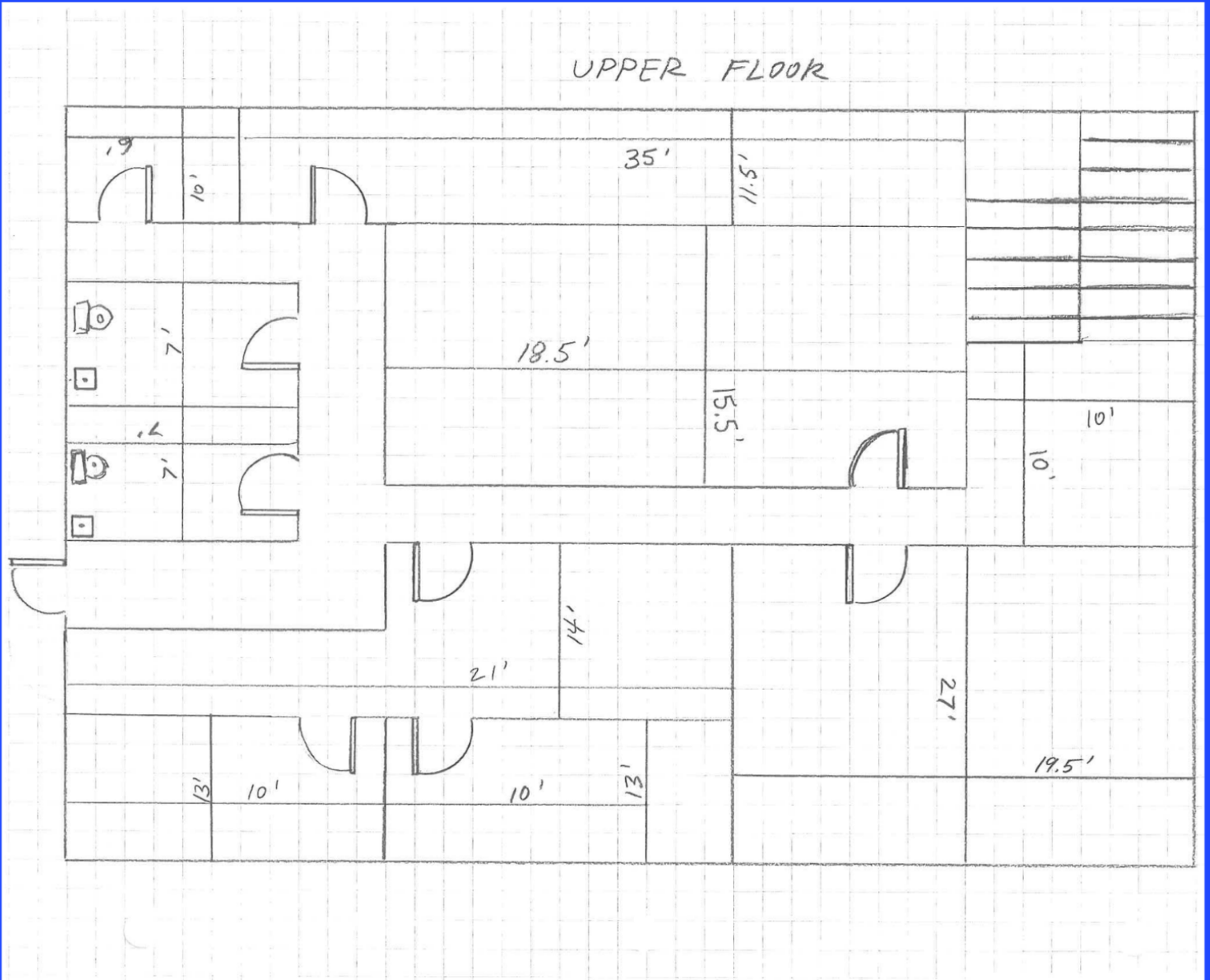
Collin Cook

801.360.8800

collin@wyngateproperties.com

WYNGATE
PROPERTIES, INC

FLEX WAREHOUSE & OFFICE SPACE – SANDY, UT



Please Contact:

Roger Woolstenhulme

801.787.8388

Collin Cook

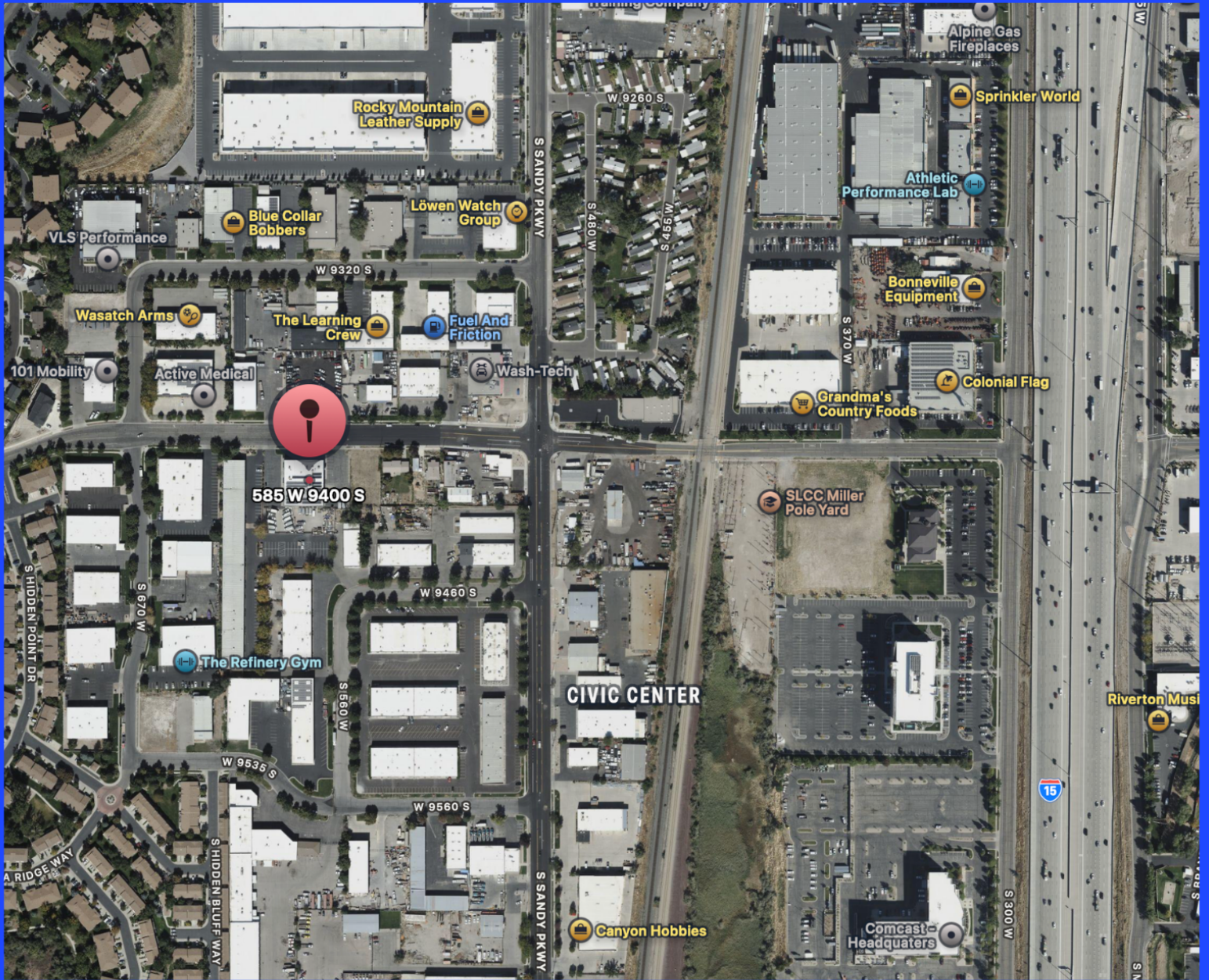
801.360.8800

roger@wyngateproperties.com

collin@wyngateproperties.com

WYNGATE
PROPERTIES, INC

FLEX WAREHOUSE & OFFICE SPACE – SANDY, UT



Please Contact:

Roger Woolstenhulme
Collin Cook

801.787.8388
801.360.8800

roger@wyngateproperties.com
collin@wyngateproperties.com

WYNGATE
PROPERTIES, INC