

# SUFFOLK BUSINESS PARK

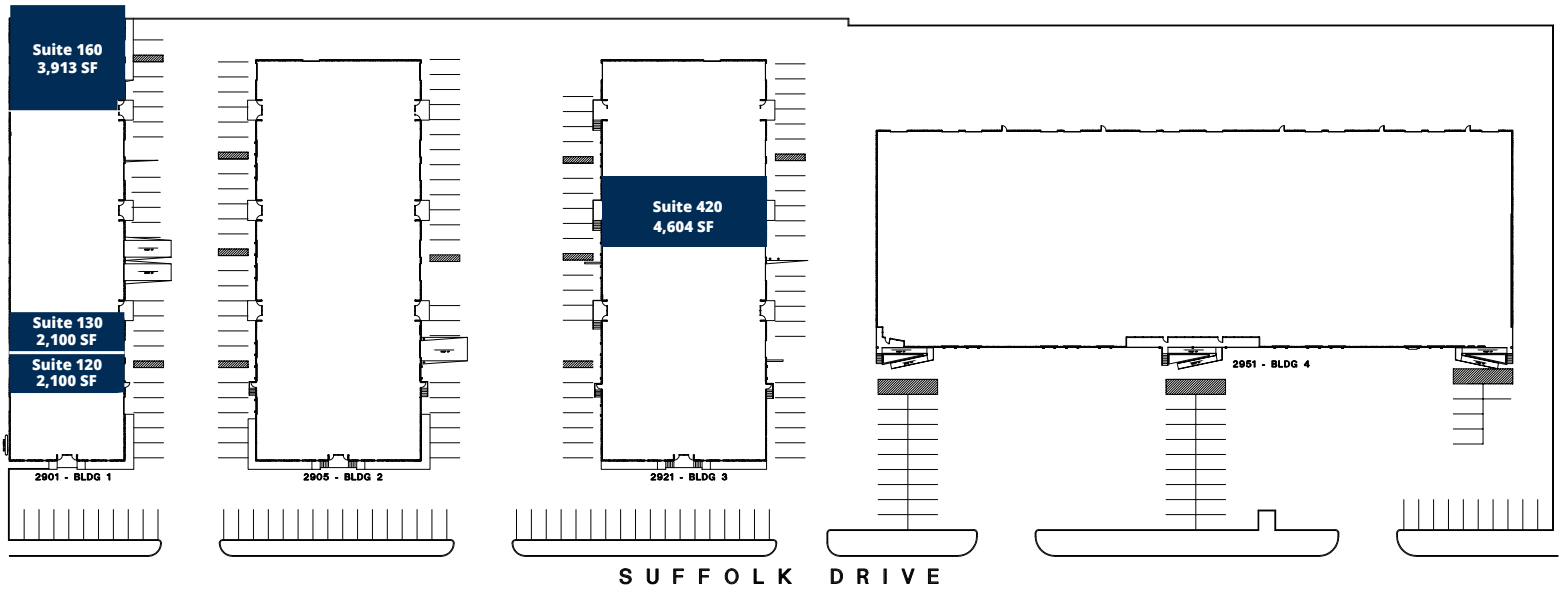


## FOR LEASE

## MOVE-IN READY INDUSTRIAL SPACE FROM 2,100 - 4,604 SF AVAILABLE

2901-2951 Suffolk Drive  
Fort Worth , TX 76133

# SITE PLAN



Owned by:

Leased by:

**Cade Navarro**  
 903.952.3172  
[cnavarro@bradford.com](mailto:cnavarro@bradford.com)

**Luke Clardy**  
 817.921.8178  
[lclardy@bradford.com](mailto:lclardy@bradford.com)

The information contained herein was obtained from sources believed reliable; however, Bradford Companies makes no guarantees, warranties, or representation as to the completeness or accuracy thereof.



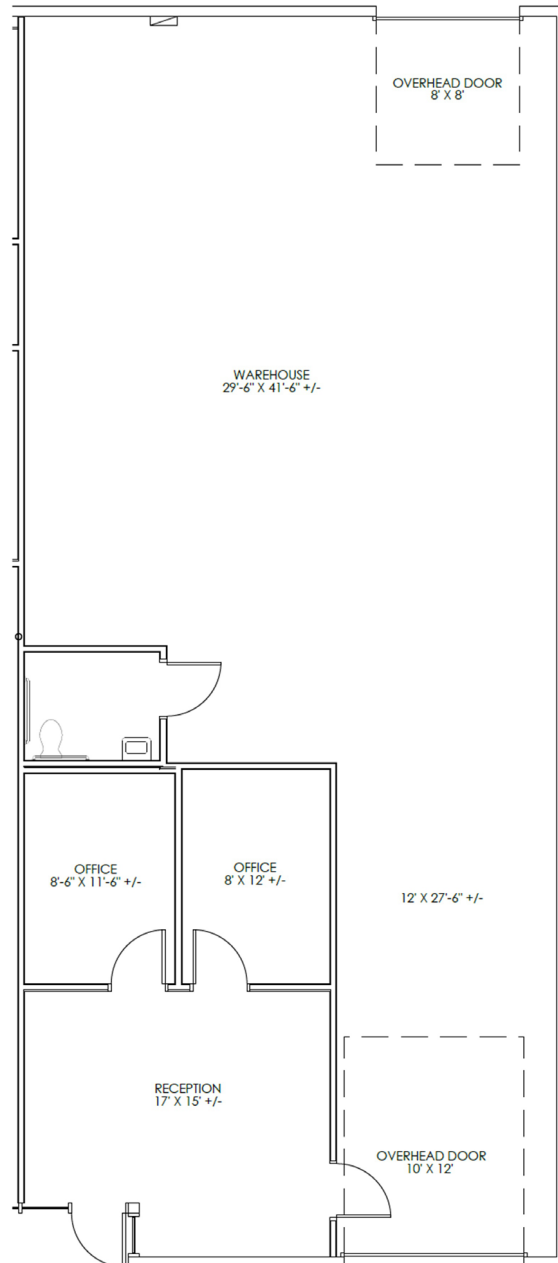
# Suffolk Business Park

2901 SUFFOLK DRIVE  
FORT WORTH, TX 76133



## SUITE 120 - 2,100 RSF

- ONE (1) GRADE LEVEL DOOR
- 16' CLEAR HEIGHT
- +/- 460 SF OFFICE, 1 RESTROOM
- MOVE-IN READY SPACE



**Cade Navarro**

903.952.3172  
cnavarro@bradford.com

**Luke Clardy**

817.921.8178  
lclardy@bradford.com

**Bradford Commercial Real Estate Services**  
www.bradford.com





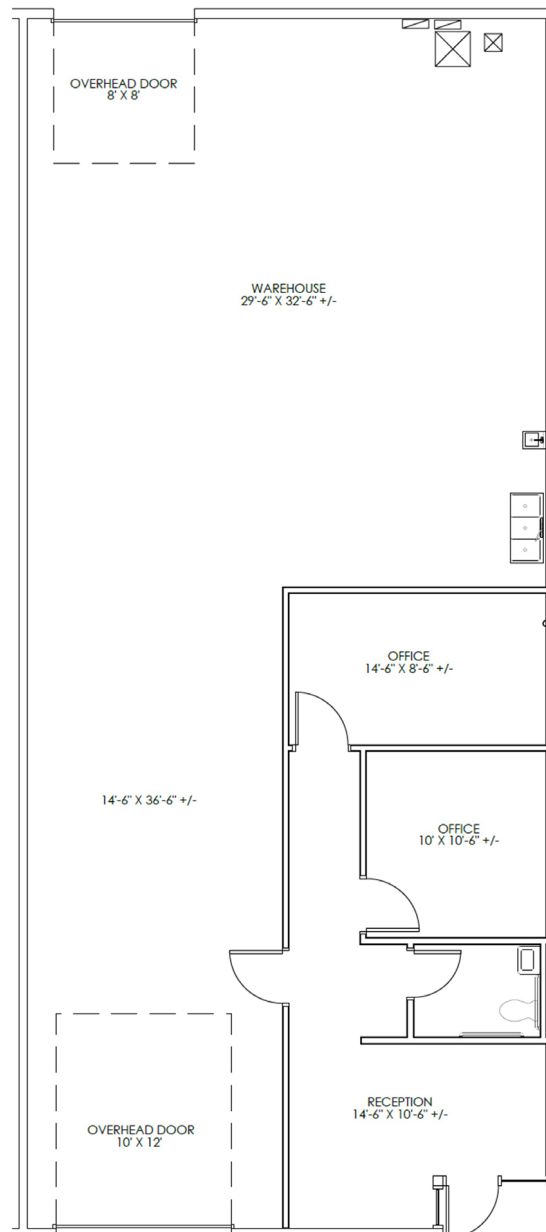
# Suffolk Business Park

2901 SUFFOLK DRIVE  
FORT WORTH, TX 76133



## SUITE 130 - 2,100 RSF

- 3 PHASE 480V HEAVY POWER
- ONE (1) GRADE LEVEL DOOR
- 16' CLEAR HEIGHT
- +/- 600 SF OFFICE, 1 RESTROOM
- MOVE-IN READY SPACE



**Cade Navarro**

903.952.3172

cnavarro@bradford.com

**Luke Clardy**

817.921.8178

lclardy@bradford.com

**Bradford Commercial Real Estate Services**

www.bradford.com





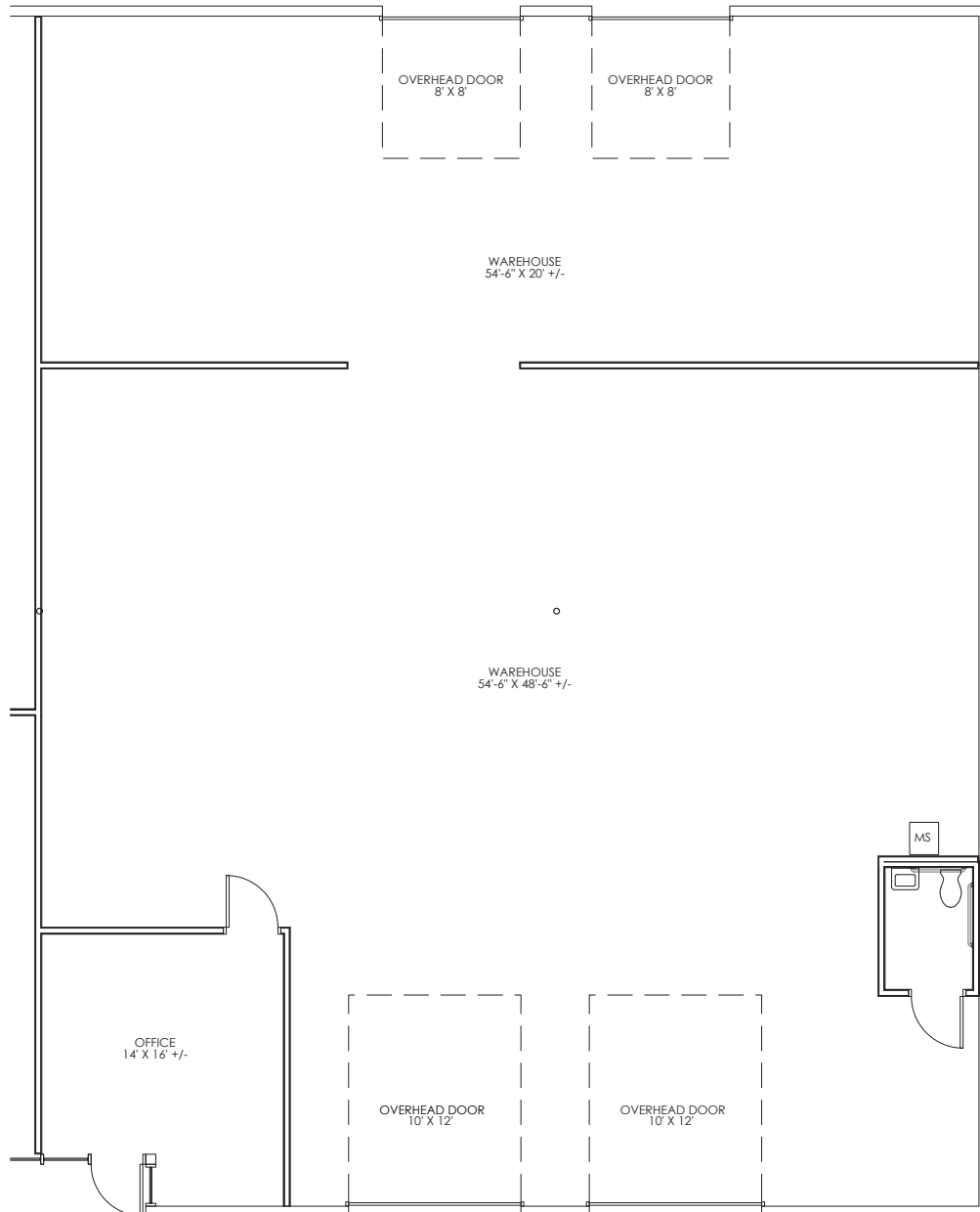
# Suffolk Business Park

2901 SUFFOLK DRIVE  
FORT WORTH, TX 76133



## SUITE 160 - 3,913 RSF

- 200 SF OFFICE
- TWO (2) GRADE LEVEL DOORS
- 16' CLEAR HEIGHT



**Cade Navarro**  
903.952.3172  
cnavarro@bradford.com

**Luke Clardy**  
817.921.8178  
lclardy@bradford.com

**Bradford Commercial Real Estate Services**  
www.bradford.com





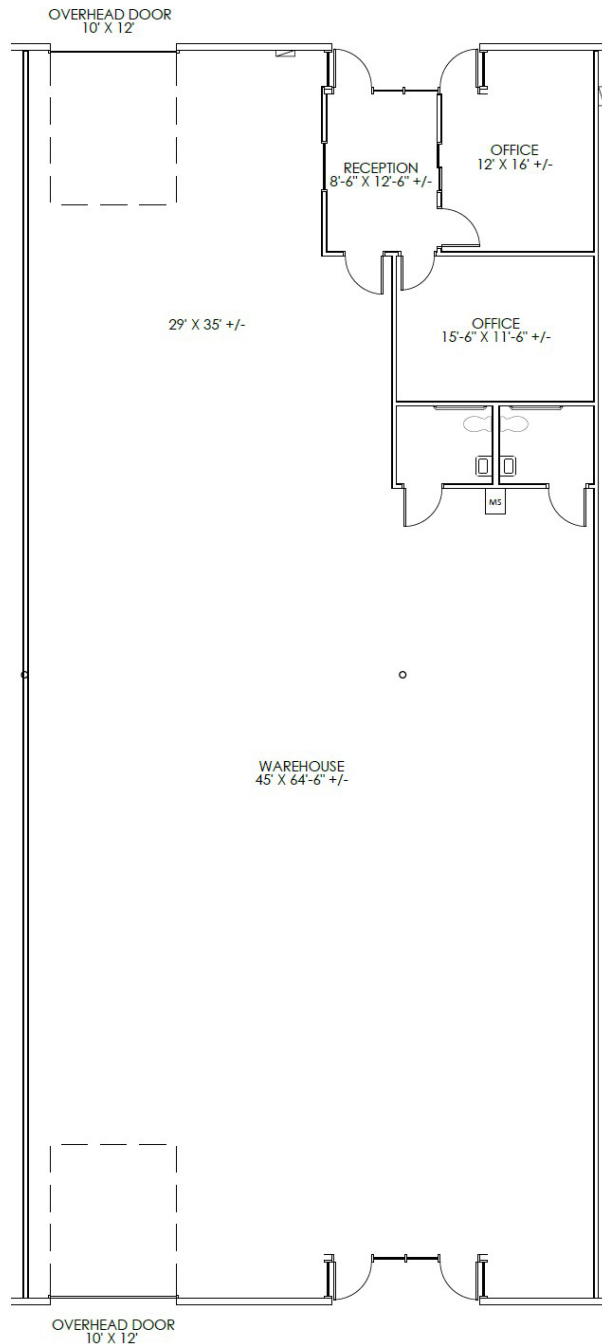
# Suffolk Business Park

2921 SUFFOLK DRIVE  
FORT WORTH, TX 76133



## SUITE 420 - 4,604 RSF

- 440 SF OFFICES, 2 RESTROOMS
- ONE (1) DOCK HIGH DOOR
- ONE (1) GRADE LEVEL DOOR
- 16' CLEAR HEIGHT

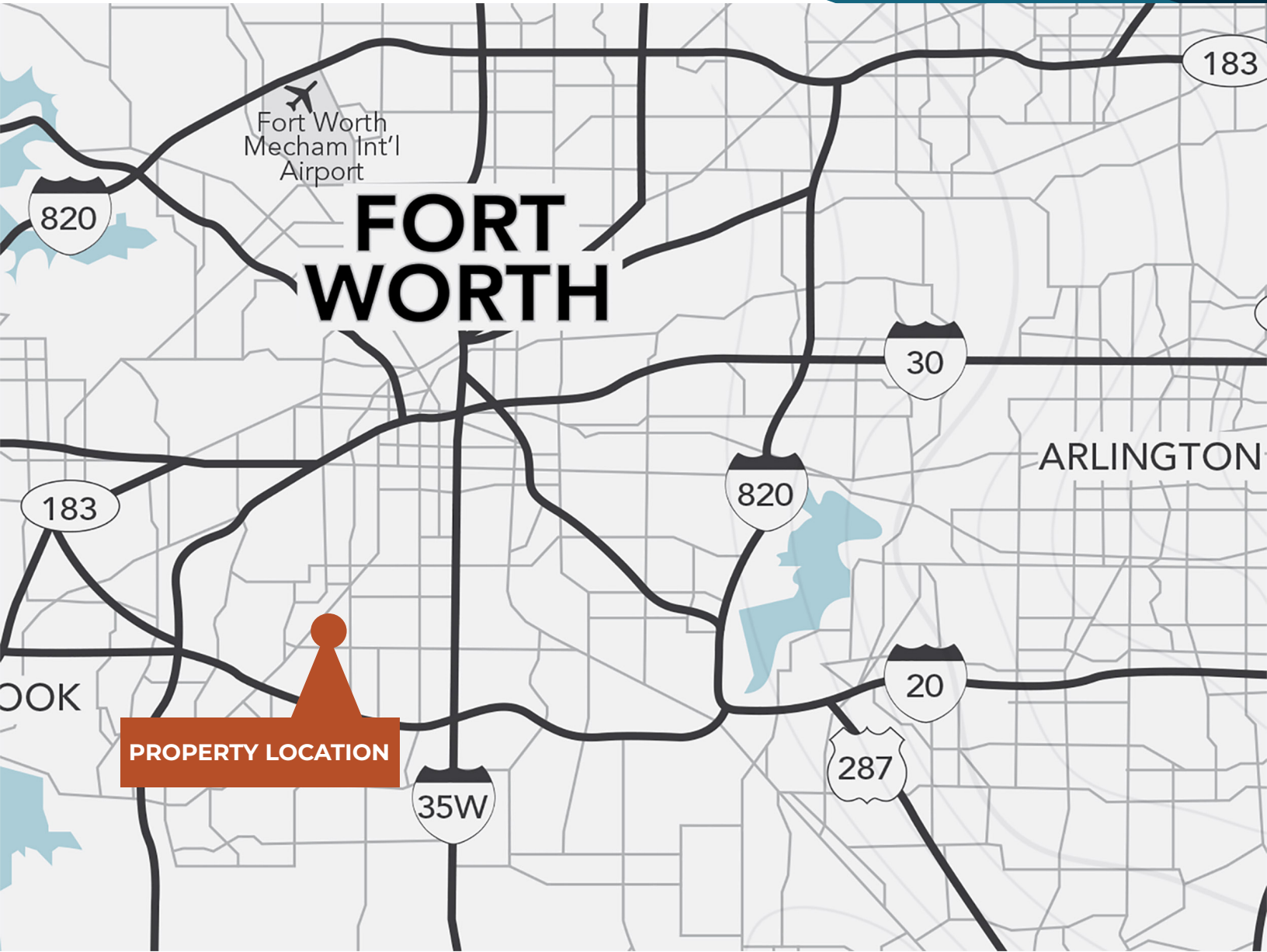


**Cade Navarro**  
903.952.3172  
cnavarro@bradford.com

**Luke Clardy**  
817.921.8178  
lclardy@bradford.com

**Bradford Commercial Real Estate Services**  
www.bradford.com





**17 MINUTES TO FORT WORTH CBD**

**22 MINUTES TO ARLINGTON ENTERTAINMENT DISTRICT**



**35 MINUTES TO FORT WORTH ALLIANCE AIRPORT**

**35 MINUTES TO DFW INTERNATIONAL AIRPORT**

Owned by:



Leased by:



**Cade Navarro**

903.952.3172

[cnavarro@bradford.com](mailto:cnavarro@bradford.com)

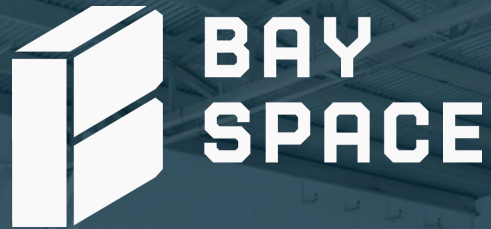
**Luke Clardy**

817.921.8178

[lclardy@bradford.com](mailto:lclardy@bradford.com)

The information contained herein was obtained from sources believed reliable; however, Bradford Companies makes no guarantees, warranties, or representation as to the completeness or accuracy thereof.

# SUFFOLK BUSINESS PARK



FOR LEASING INFORMATION



**Cade Navarro**

903.952.3172

[cnavarro@bradford.com](mailto:cnavarro@bradford.com)



**Luke Clardy**

817.921.8178

[lclardy@bradford.com](mailto:lclardy@bradford.com)

