

FOR LEASE

5049 Center Drive – Bldg B

Latrobe, PA 15650



Ty Gradwell, Associate

+1 412 944 2134

ty.gradwell@avisonyoung.com

Michael B. Downey, Principal

+1 412 944 2135

michael.downey@avisonyoung.com

Avison Young - Pittsburgh | Four PPG Place, Suite 300 | Pittsburgh, PA 15222

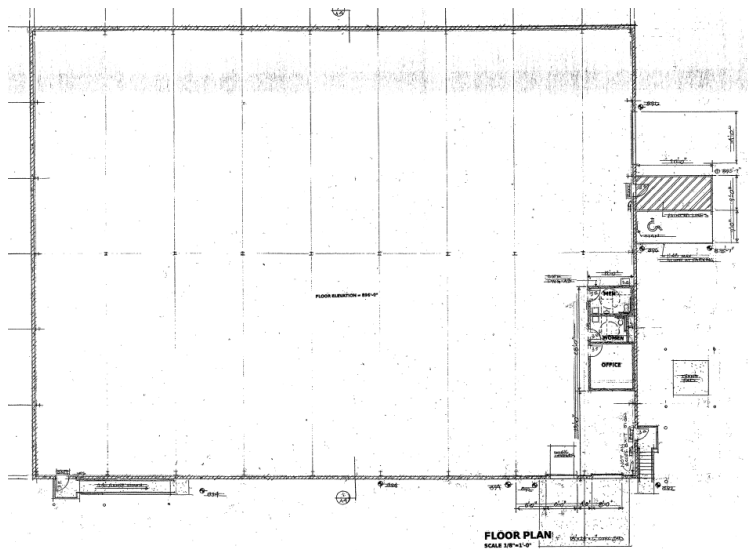
© 2025. Avison Young - Pittsburgh. Information contained herein was obtained from sources deemed reliable and, while thought to be correct, have not been verified. Avison Young - Pittsburgh does not guarantee the accuracy or completeness of the information presented, nor assumes any responsibility or liability for any errors or omissions therein.

Prime Industrial Location

AVISON YOUNG

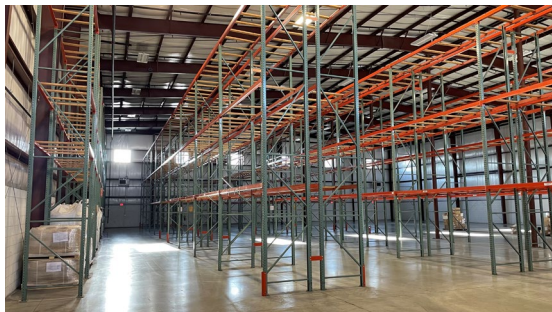
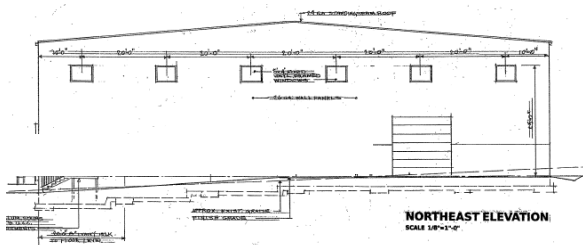
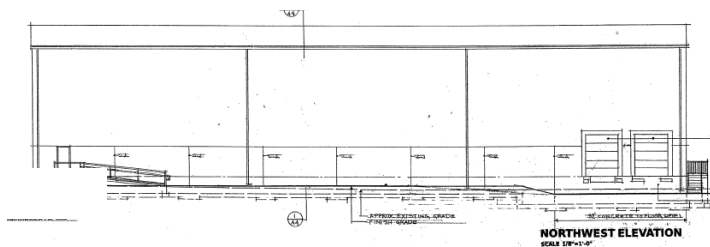
Building Information / Floor Plans

Asking Rate - \$6.50/SF/YR NNN



Building Description

Building Size:	19,200 SF
Office/Bathroom Size:	132 SF
Warehouse Size:	19,068 SF
Drive-In Doors:	One (1)
Loading Docks:	Two (2)
Ceiling Height:	32' - 10"
Zoning:	C
Parking:	Accessible parking spaces provided
Slab Depth:	6" Concrete with 6x6 mesh rebar
Column Width:	18' - 10"

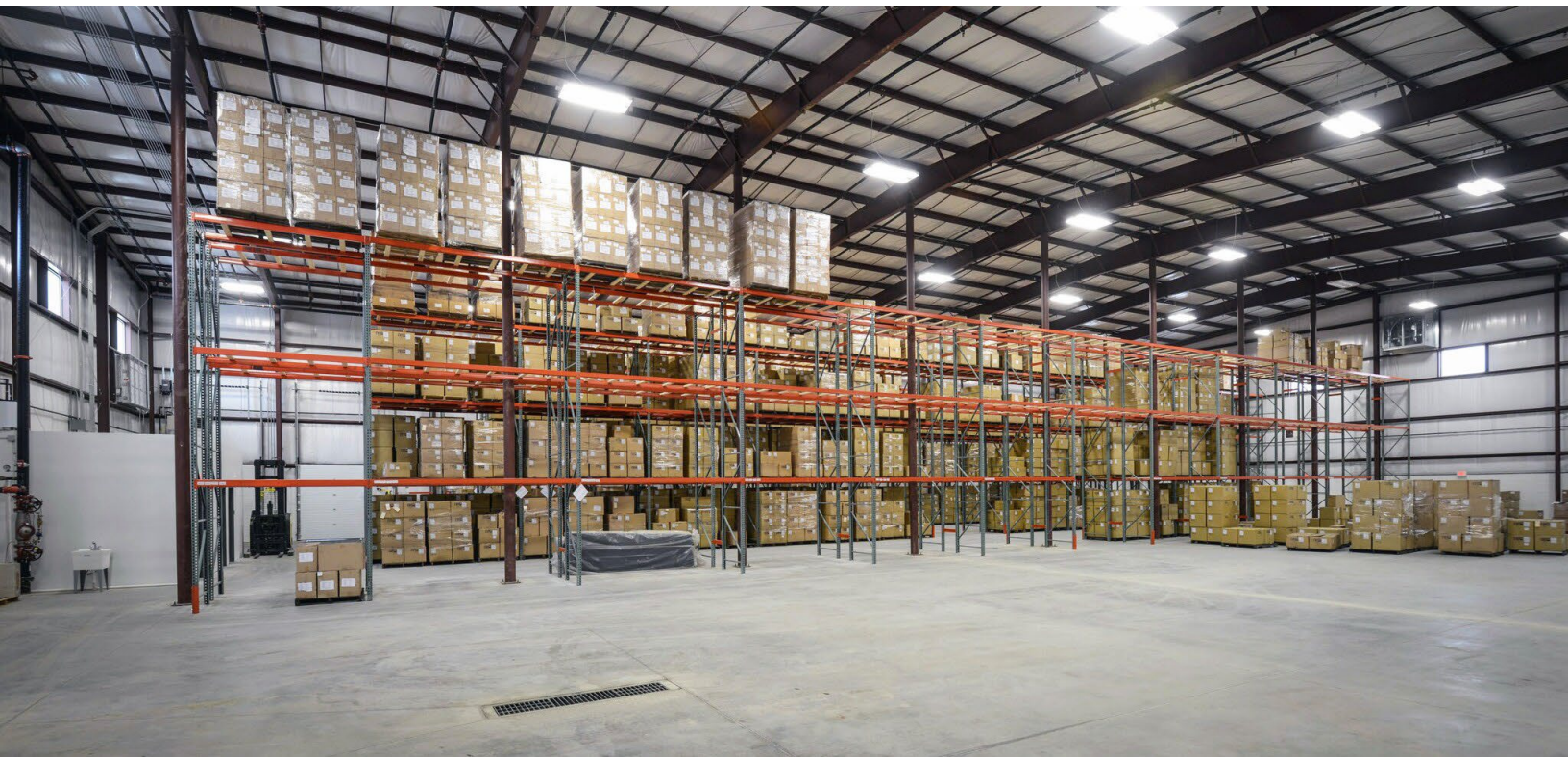


**AVISON
YOUNG**

Ty Gradwell, Associate
+1 412 944 2134
ty.gradwell@avisonyoung.com

Michael B. Downey, Principal
+1 412 944 2135
michael.downey@avisonyoung.com

Gallery



**AVISON
YOUNG**

Ty Gradwell, Associate
+1 412 944 2134
ty.gradwell@avisonyoung.com

Michael B. Downey, Principal
+1 412 944 2135
michael.downey@avisonyoung.com

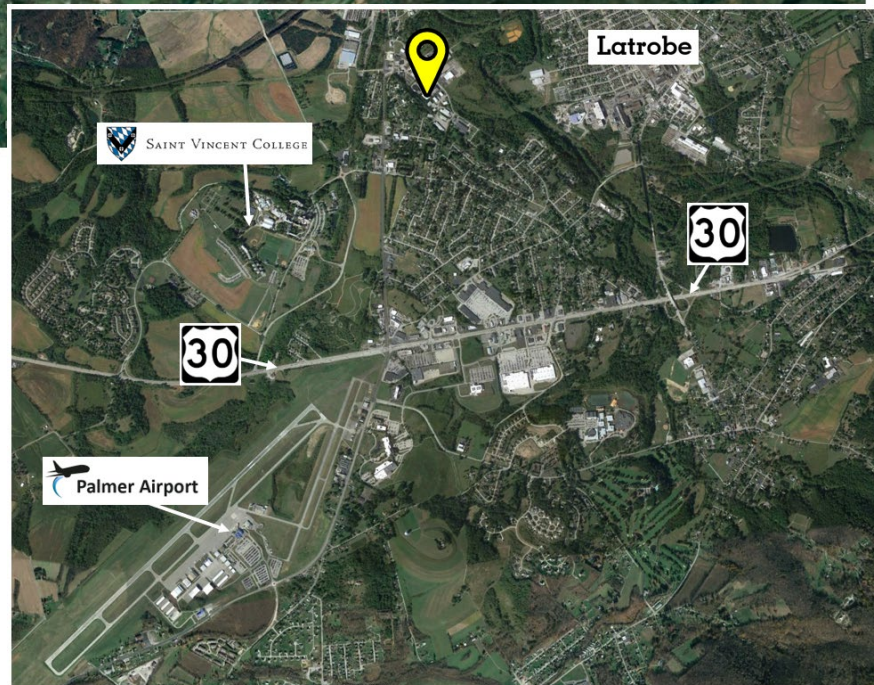
Avison Young · Pittsburgh | Four PPG Place, Suite 300 | Pittsburgh, PA 15222

© 2025, Avison Young - Pittsburgh. Information contained herein was obtained from sources deemed reliable and, while thought to be correct, have not been verified. Avison Young - Pittsburgh does not guarantee the accuracy or completeness of the information presented, nor assumes any responsibility or liability for any errors or omissions therein.

Aerial Map



- **Arnold Palmer Regional Airport (3.3 Miles / 8-minute Drive)**
- **PA Turnpike New Stanton Interchange (16.5 Miles / 28-minute drive)**



**AVISON
YOUNG**

Ty Gradwell, Associate
+1 412 944 2134
ty.gradwell@avisonyoung.com

Michael B. Downey, Principal
+1 412 944 2135
michael.downey@avisonyoung.com

Avison Young · Pittsburgh | Four PPG Place, Suite 300 | Pittsburgh, PA 15222

© 2025, Avison Young - Pittsburgh. Information contained herein was obtained from sources deemed reliable and, while thought to be correct, have not been verified. Avison Young - Pittsburgh does not guarantee the accuracy or completeness of the information presented, nor assumes any responsibility or liability for any errors or omissions therein.