



# ROUTE 17 AT VICTORY BOULEVARD

2420 GEORGE WASHINGTON MEMORIAL HIGHWAY, YORKTOWN, VA 23693



# ROUTE 17 AT VICTORY BOULEVARD

2420 GEORGE WASHINGTON MEMORIAL HIGHWAY, YORKTOWN, VA 23693

## PROPERTY OVERVIEW



### OFFERING SUMMARY

<b>Sale Price:</b>	\$1,450,000
<b>Lease Rate:</b>	Negotiable
<b>Lot Size:</b>	4.02 Acres
<b>Traffic Count (VPD):</b>	Route 17: 50,000 Victory: 31,000
<b>Zoning:</b>	GB (General Business)

### PROPERTY OVERVIEW

This high-traffic site adjacent to Walgreens in Yorktown is a prime development opportunity.

### PROPERTY HIGHLIGHTS

- Access to Route 17 (50,000 VPD) and Victory Boulevard (31,000 VPD)
- Water & Sewer to Site
- Retention Pond in Place
- Ideal for office, medical, retail, senior living, daycare, or hospitality

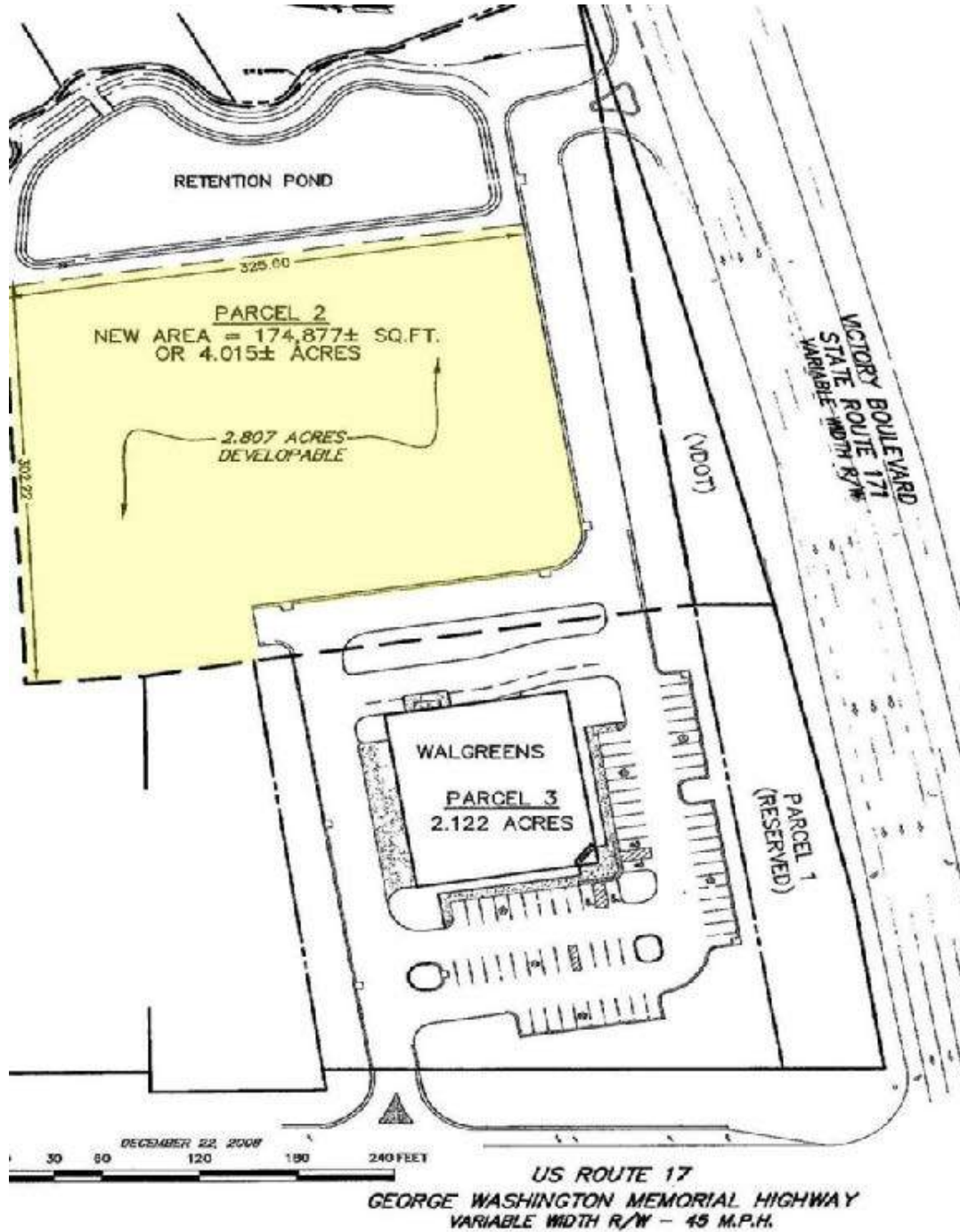
### DEMOGRAPHICS

	1 Mile	3 Miles	5 Miles
Total Households:	2,044	22,886	61,553
Total Population:	5,533	57,962	155,861
Average HH Income:	\$110,905	\$83,214	\$76,567

# ROUTE 17 AT VICTORY BOULEVARD

2420 GEORGE WASHINGTON MEMORIAL HIGHWAY, YORKTOWN, VA 23693

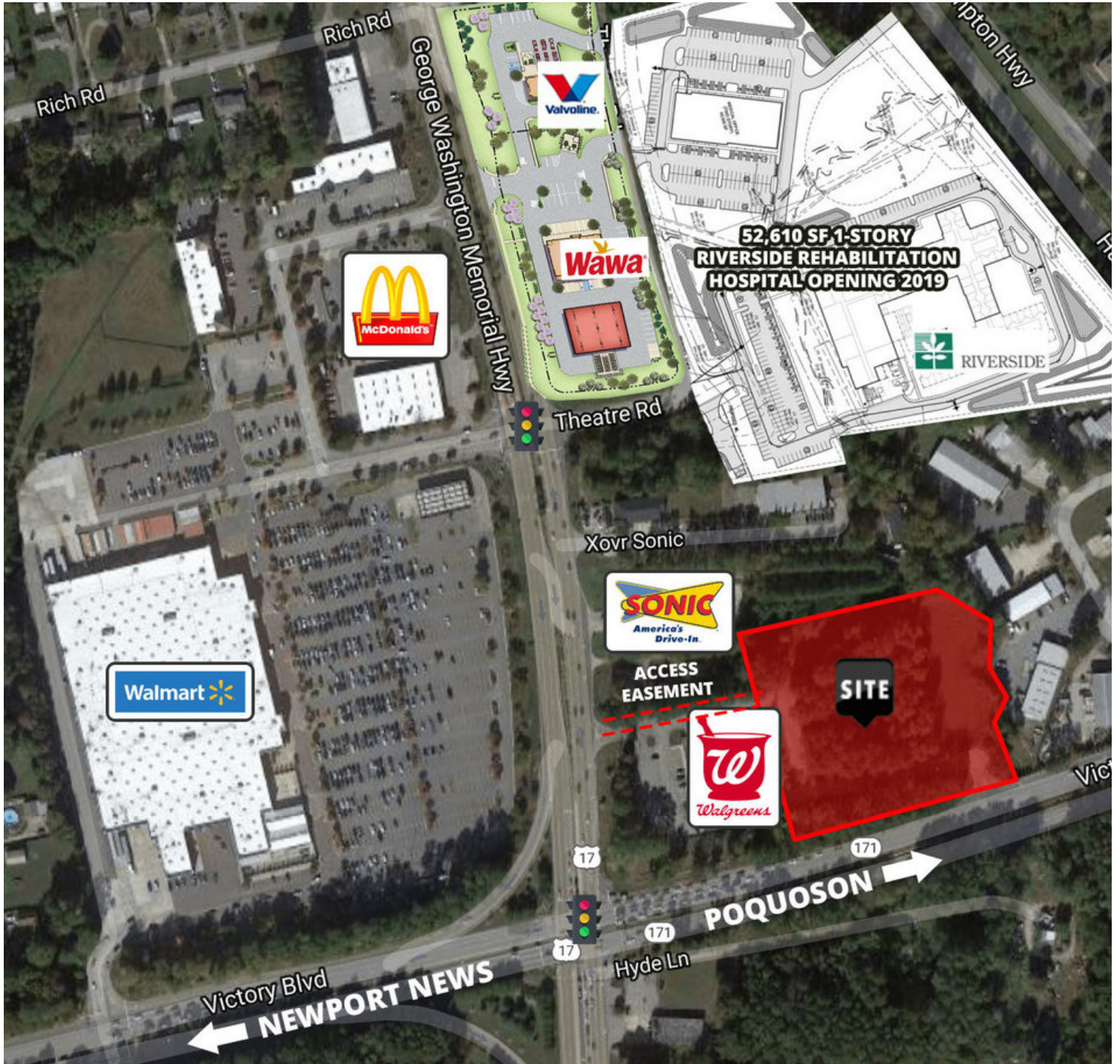
SITE PLAN



# ROUTE 17 AT VICTORY BOULEVARD

2420 GEORGE WASHINGTON MEMORIAL HIGHWAY, YORKTOWN, VA 23693

RETAILER MAP



# ROUTE 17 AT VICTORY BOULEVARD

2420 GEORGE WASHINGTON MEMORIAL HIGHWAY, YORKTOWN, VA 23693

## DEMOGRAPHICS MAP



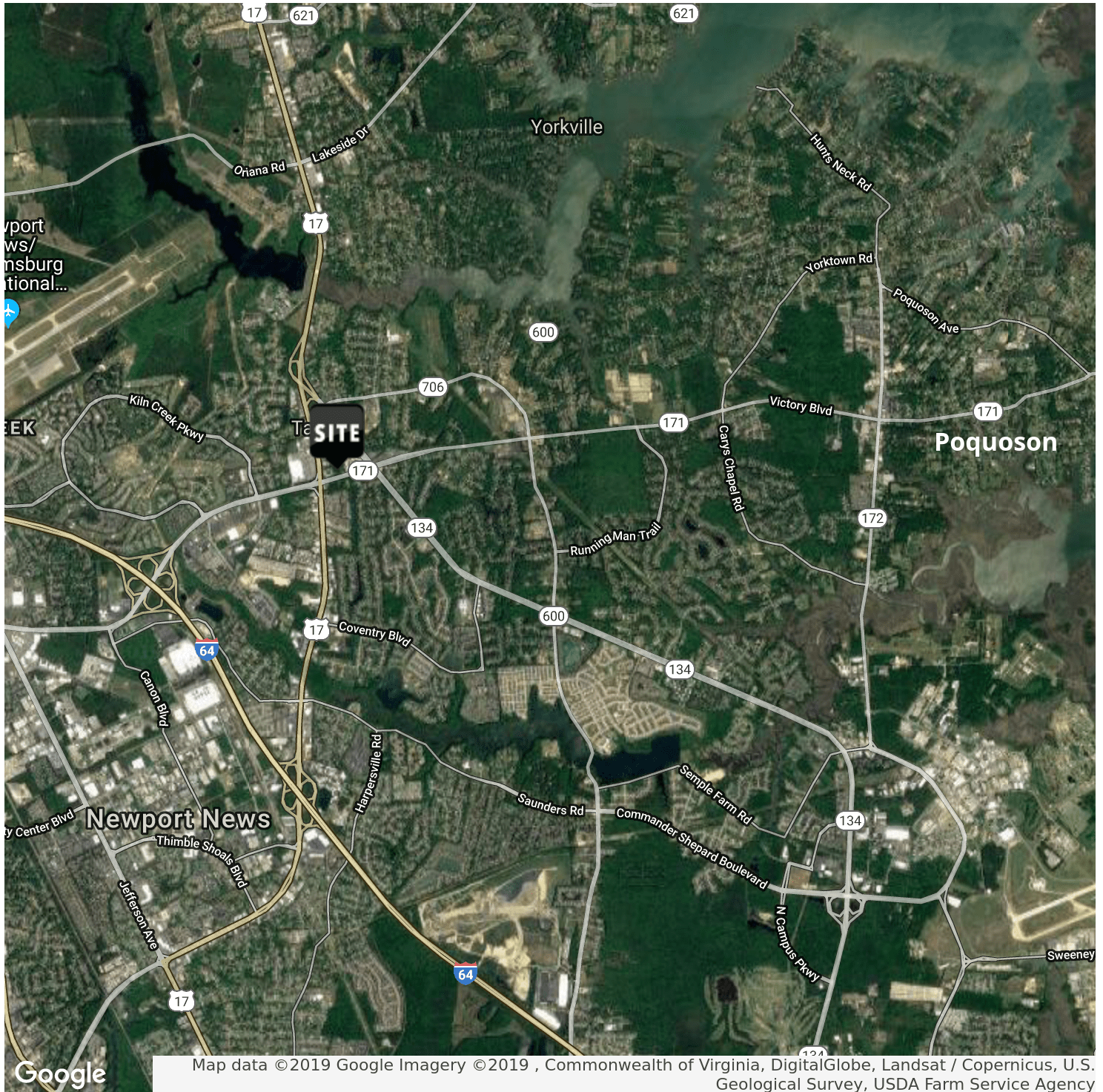
<b>POPULATION</b>	<b>1 MILE</b>	<b>3 MILES</b>	<b>5 MILES</b>
TOTAL POPULATION	5,533	57,962	155,861
MEDIAN AGE	39.7	36.7	36.1
MEDIAN AGE (MALE)	39.3	36.1	35.4
MEDIAN AGE (FEMALE)	39.9	37.8	37.2
<b>HOUSEHOLDS &amp; INCOME</b>	<b>1 MILE</b>	<b>3 MILES</b>	<b>5 MILES</b>
TOTAL HOUSEHOLDS	2,044	22,886	61,553
# OF PERSONS PER HH	2.7	2.5	2.5
AVERAGE HH INCOME	\$110,905	\$83,214	\$76,567
AVERAGE HOUSE VALUE	\$380,387	\$338,990	\$317,407

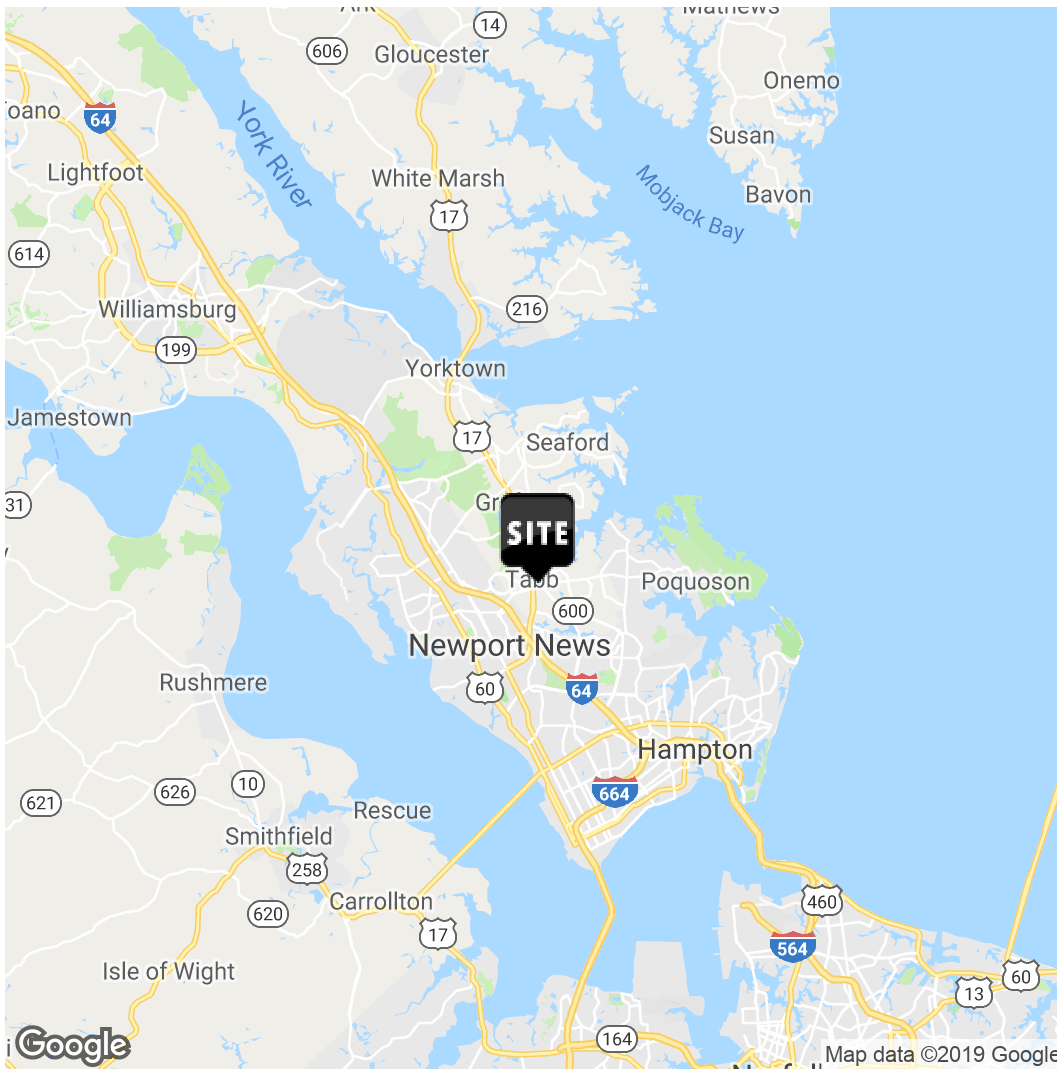
\* Demographic data derived from 2010 US Census

# ROUTE 17 AT VICTORY BOULEVARD

2420 GEORGE WASHINGTON MEMORIAL HIGHWAY, YORKTOWN, VA 23693

LOCAL AREA





**Erica Rorrer**

Senior Vice President  
 757.333.4388  
 Errorer@divaris.com

**Elizabeth Napolitano**

Sales And Leasing  
 Associate  
 757.333.4331  
 Elizabeth.napolitano@divaris.com

The information contained herein should be considered confidential and remains the sole property of Divaris Real Estate, Inc. at all times. Although every effort has been made to ensure accuracy, no liability will be accepted for any errors or omissions. Disclosure of any information contained herein is prohibited except with the express written permission of Divaris Real Estate, Inc.