

West Haven For Sale/Lease

2900 West Midland Drive
West Haven, Utah

Property Information

- Great location, new development - anchored by a national tenant
- Space Available: Retail, Storage & Office
- 2,800 - 75,000 SF
- 0.5 -1.5 Acre Pads
- High trafficked area
- Traffic Counts:

Midland Drive - 19,819 ADT

4000 South - 9,696 ADT



Stuart Thain
Executive Vice President
+1 801 947 8303
stuart.thain@colliers.com

Colliers
6440 S. Millrock Dr., Suite 500
Salt Lake City, UT 84121
Main: +1 801 947 8300
colliers.com

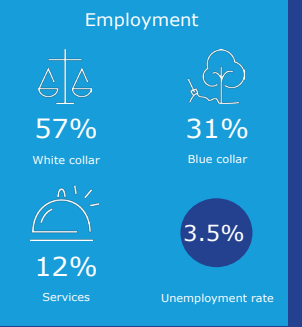
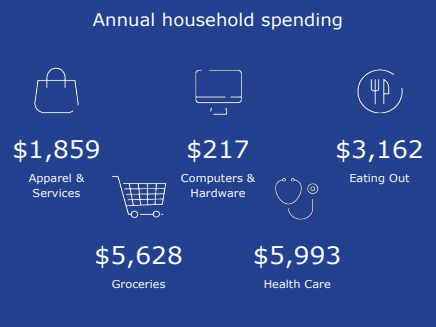
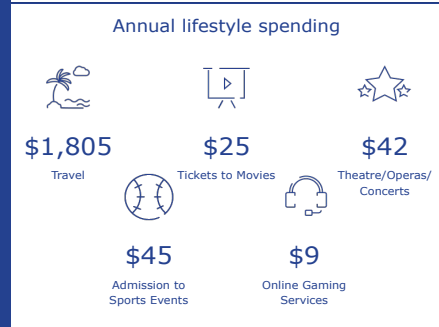
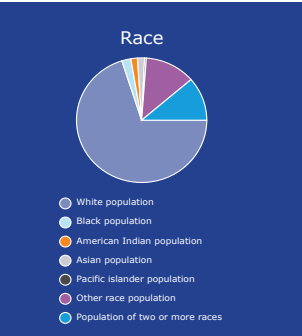
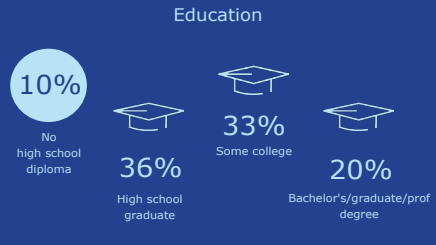
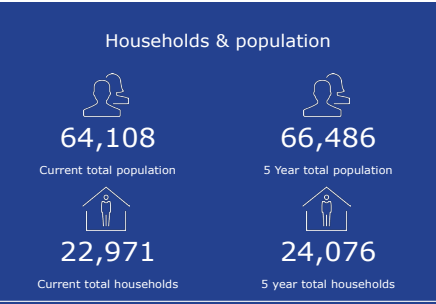
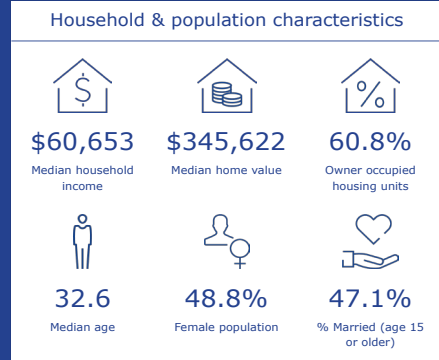




West Haven | 2600 W Midland Dr.



Market Overview



West Haven | 2900 W. Midland Drive



Stuart Thain
 Executive Vice President
 +1 801 947 8303
 stuart.thain@colliers.com



Colliers
 6440 S. Millrock Dr., Suite 500
 Salt Lake City, UT 84121
 Main: +1 801 947 8300
 colliers.com