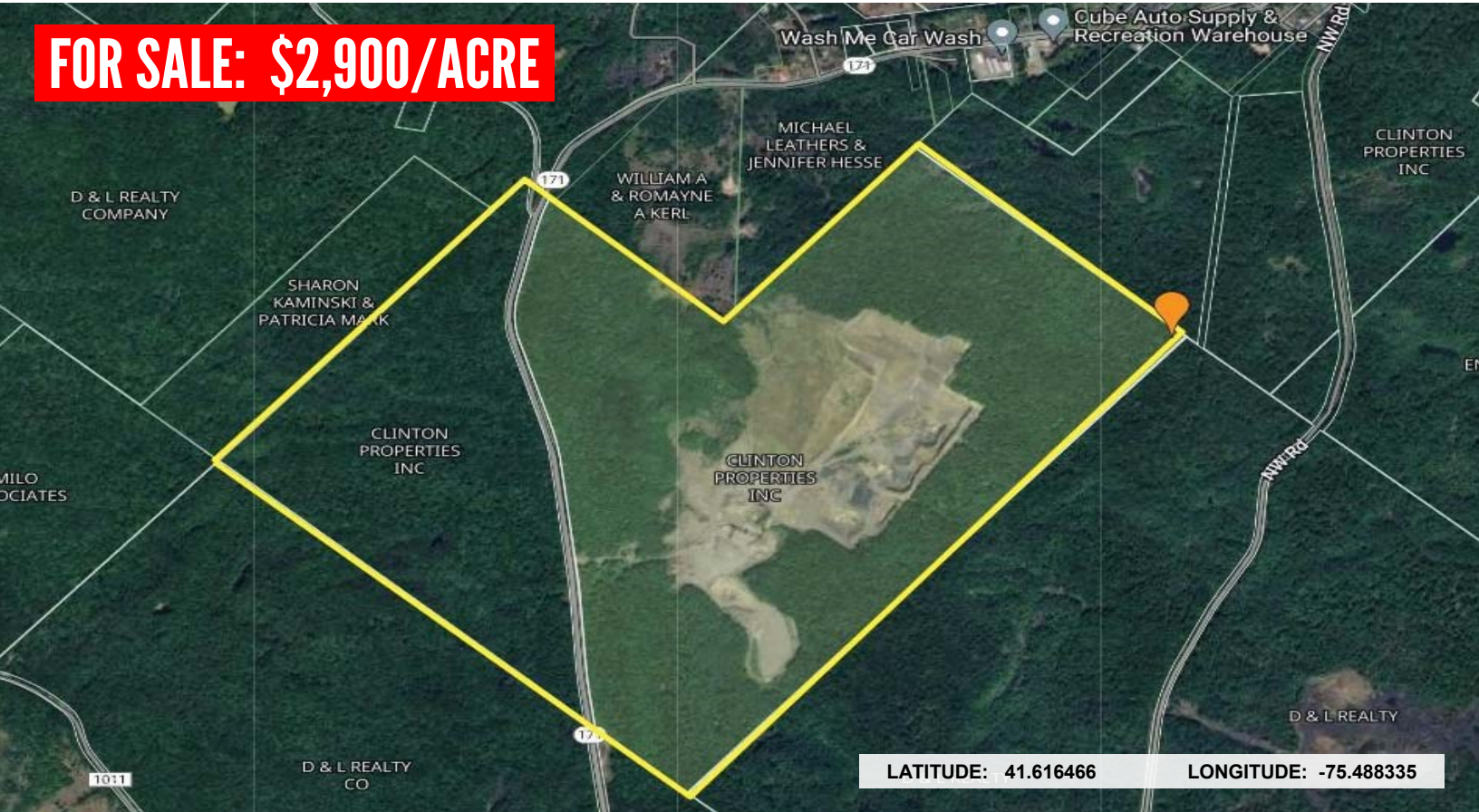


FOR SALE: \$2,900/ACRE



1040 MAIN STREET, FELS TOWNSHIP (CARBONDALE, PA) 18407

Two contiguous parcels, 454.31+/- acres and 175.4+/- acres of land, plus a non-contiguous 32+/- acre parcel. Three tax parcels. **EXCEPTION TO SALE: 100'x100' area of land leased to Verizon.** Contact listing agent for details.

PROPERTY DETAILS:

- 661.71+/- Acres
- PINs: 01604010002; 02601010001; 01701010001
- Zoned C-2 (General Commercial); S-1 (Conservation)
- 2024 Taxes: \$21,377.00

For Information Contact:

Al Guari, Vice President - Brokerage
aguari@mericle.com

Office: 570.823.1100 * Cell: 570.499.2889

Information shown is purported to be from reliable sources. No representation is made to the accuracy thereof, and is submitted subject to errors, omissions, prior sale/lease, withdrawal notice, or other conditions.

570.823.1100
mericle.com



East Mountain Corporate Center
100 Baltimore Drive
Wilkes-Barre, PA 18702

Developing Northeastern Pennsylvania's I-81 Corridor Since 1985

TCN
WORLDWIDE
REAL ESTATE SERVICES