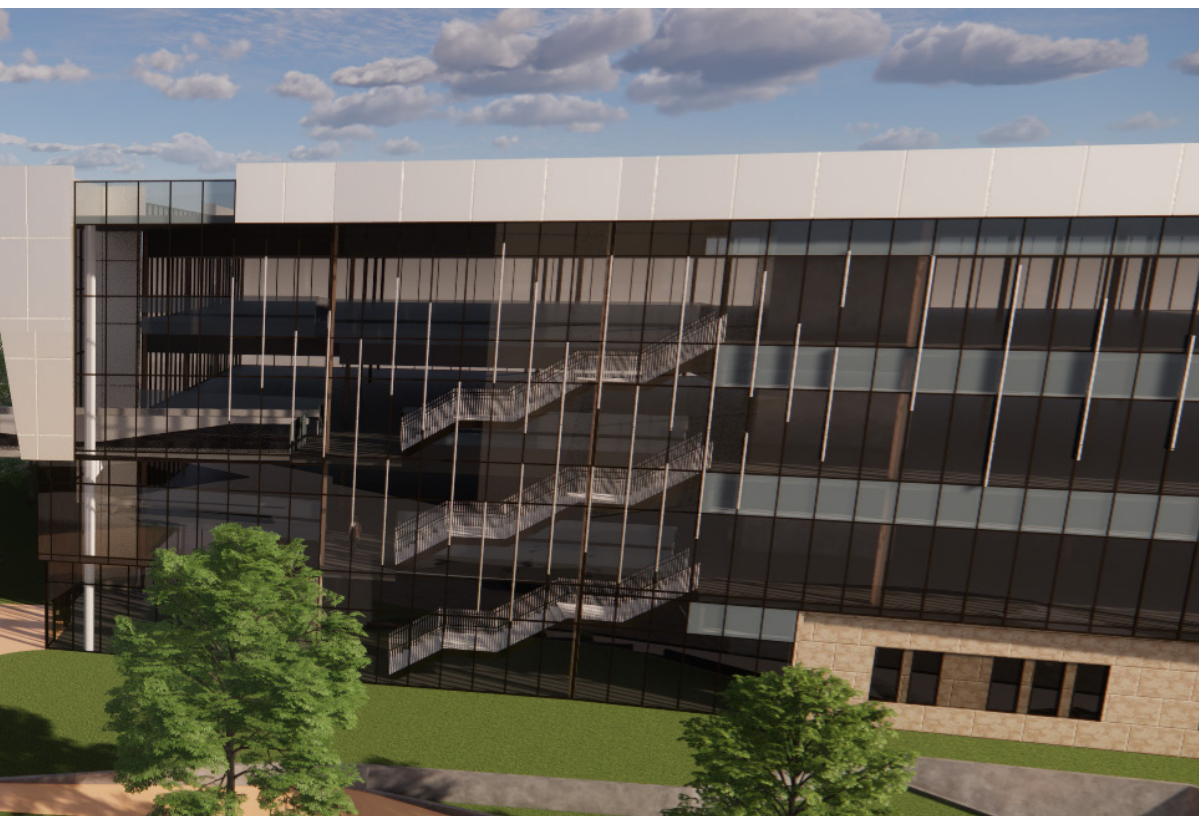




CUSH
MEDICAL PLAZA

NEW CLASS A ON CAMPUS MEDICAL OFFICE BUILDING FOR LEASE



PROJECT FEATURES



Prime Location:
Adjacent to Sharp
Grossmont Hospital



Parking:
5:1,000 SF Parking Ratio Provides Easy and
Convenient Access to the Plaza

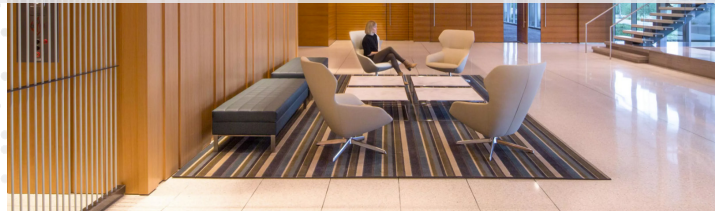


Flexible Suite Size Opportunities:
5,000-25,000 SF Suites Available



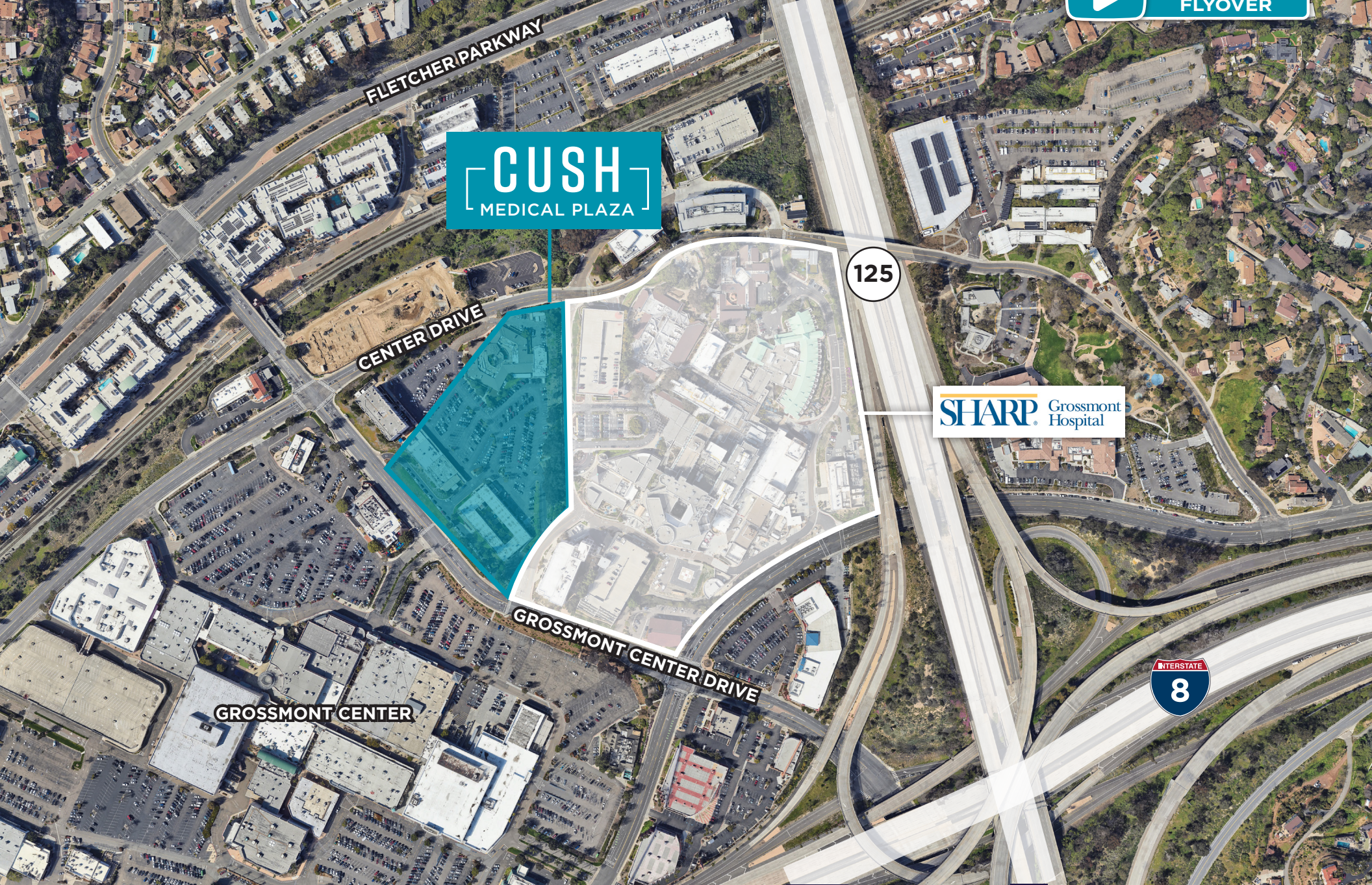
Rate:
Contact Brokers

PROPOSED INTERIOR BUILD-OUT



PROJECT AERIAL

 VIEW VIDEO FLYOVER



CUSH
MEDICAL PLAZA

125

SHARP Grossmont Hospital

GROSSMONT CENTER

INTERSTATE
8

SITE PLAN



COMPELLING DEMOGRAPHICS



1,433,850

POPULATION



\$7,219.15

ANNUAL AVERAGE
HEALTHCARE SPENDING PER
HOUSEHOLD



14.9%

POPULATION AGED 65+



35.9

MEDIAN AGE

TRAFFIC COUNTS



228,000

CARS PER DAY
Interstate 8 and CA 125

**20 MINUTE
DRIVE RADIUS**



\$114,197

AVERAGE
HOUSEHOLD INCOME

Annual healthcare spending
per household

INSURANCE COVERAGE

46%

PPO

19%

HMO

19%

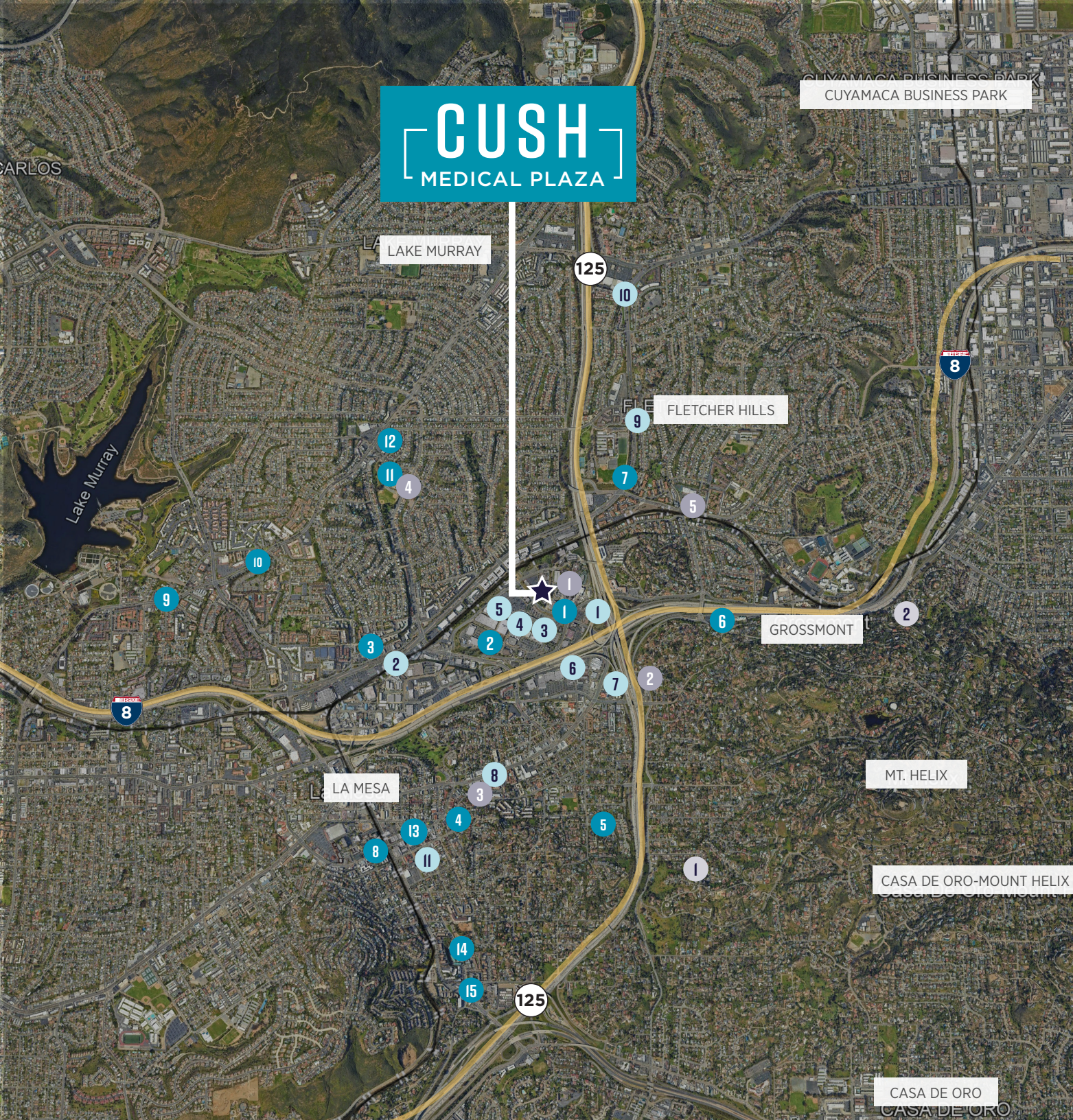
MEDICARE

16%

OTHER

CUSH

MEDICAL PLAZA



RESTAURANTS & CAFE

1. 5565 Grossmont Center Drive
2. Olive Garden Italian Restaurant
3. Chick-fil-A
4. Casa Gabriela
5. Igotyourcake
6. Brigantine Seafood & Oyster Bar
7. Senor Burro
8. Farmer's Table La Mesa
9. Smokey and The Brisket BBQ
10. Antica Trattoria
11. Brew Coffee Spot
12. Starbucks
13. Public Square Coffee House
14. Dark Horse Coffee Roasters
15. Denny's

RETAIL

1. Trader Joe's
2. Vine Ripe Market
3. Walmart
4. Grossmont Center
5. Target
6. Hobby Lobby
7. Urbn Leaf
8. Alan's Music Center Inc.
9. Tubbys TCG
10. JOANN Fabric and Crafts
11. Sprouts Farmers Market

SERVICES

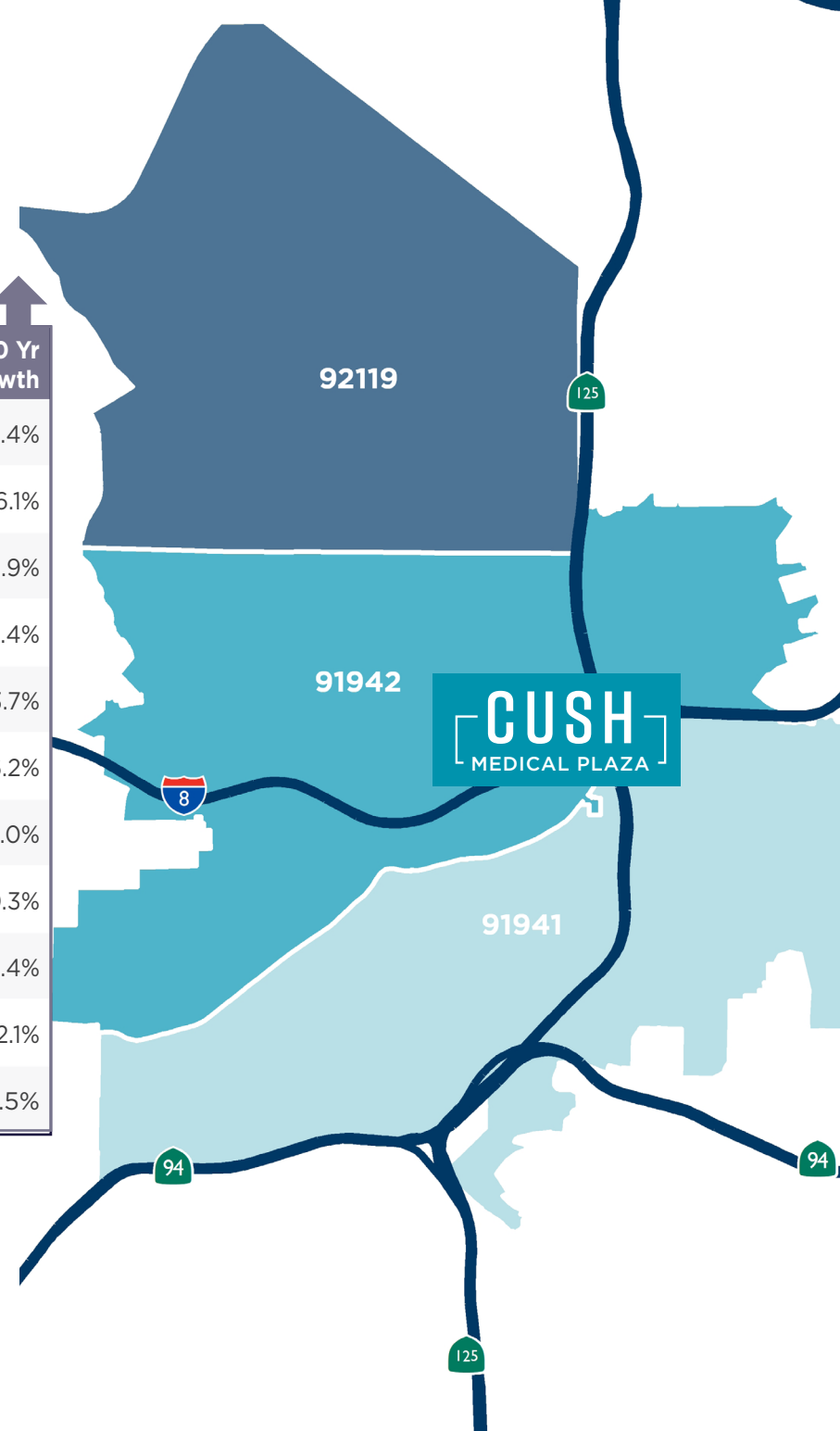
1. Sharp Grossmont Hospital
2. Grossmont Blvc Park & Ride
3. Philip H Dyson Law Offices
4. Murray Manor Elementary School
5. The Lamplighters Community Theatre

HOTELS

1. The Barn
2. San Diego Hotel

PATIENT DEMAND FORECAST

Service Line	2023 Volume	2028 Volume	2033 Volume	5 Yr Growth	10 Yr Growth
Psychiatry	24,410	27,530	27,671	12.8%	13.4%
Vascular	3,560	3,876	4,134	8.9%	16.1%
Physical Therapy/ Rehabilitation	48,113	52,327	59,112	8.8%	22.9%
Cardiology	20,864	22,597	23,656	8.3%	13.4%
Ophthalmology	19,324	20,816	21,967	7.7%	13.7%
Orthopedics	5,969	6,408	6,936	7.4%	16.2%
ENT	6,198	6,612	6,880	6.7%	11.0%
Lab	89,784	95,545	99,027	6.4%	10.3%
Pain Management	2,317	2,462	2,558	6.2%	10.4%
Miscellaneous Services	42,436	44,934	47,553	5.9%	12.1%
Nephrology	1,023	1,073	1,100	4.8%	7.5%



Market Scenario Planner displays the types of services patients in your market are expected to use and allows projections to be customized according to five key growth drivers; disease prevalence, care management, insurance, readmissions and technology shifts. The above data is representative of Cushman Medical Center which includes areas in zip codes 92119, 91942, and 91941.

CUSH

MEDICAL PLAZA

LISTING CONTACTS:

JOE ZUREK

+1 858 558 5612

joe.zurek@cushwake.com

CA Lic. #01967813

NEHAL WADHWA

+1 858 625 5228

nehal.wadhwa@cushwake.com

CA Lic. #01859922



©2024 Cushman & Wakefield. All rights reserved. The information contained in this communication is strictly confidential. This information has been obtained from sources believed to be reliable but has not been verified. NO WARRANTY OR REPRESENTATION, EXPRESS OR IMPLIED, IS MADE AS TO THE CONDITION OF THE PROPERTY (OR PROPERTIES) REFERENCED HEREIN OR AS TO THE ACCURACY OR COMPLETENESS OF THE INFORMATION CONTAINED HEREIN, AND SAME IS SUBMITTED SUBJECT TO ERRORS, OMISSIONS, CHANGE OF PRICE, RENTAL OR OTHER CONDITIONS, WITHDRAWAL WITHOUT NOTICE, AND TO ANY SPECIAL LISTING CONDITIONS IMPOSED BY THE PROPERTY OWNER(S). ANY PROJECTIONS, OPINIONS OR ESTIMATES ARE SUBJECT TO UNCERTAINTY AND DO NOT SIGNIFY CURRENT OR FUTURE PROPERTY PERFORMANCE.

