



ORLANDO, FL



Best Remaining Site in the Central Florida Research Park

TECHNOLOGY PARKWAY
10.24 Acres



NAVAIR



PEO-STRI



Central Florida Research Park Overview

- Nation's 6th Largest Research Park

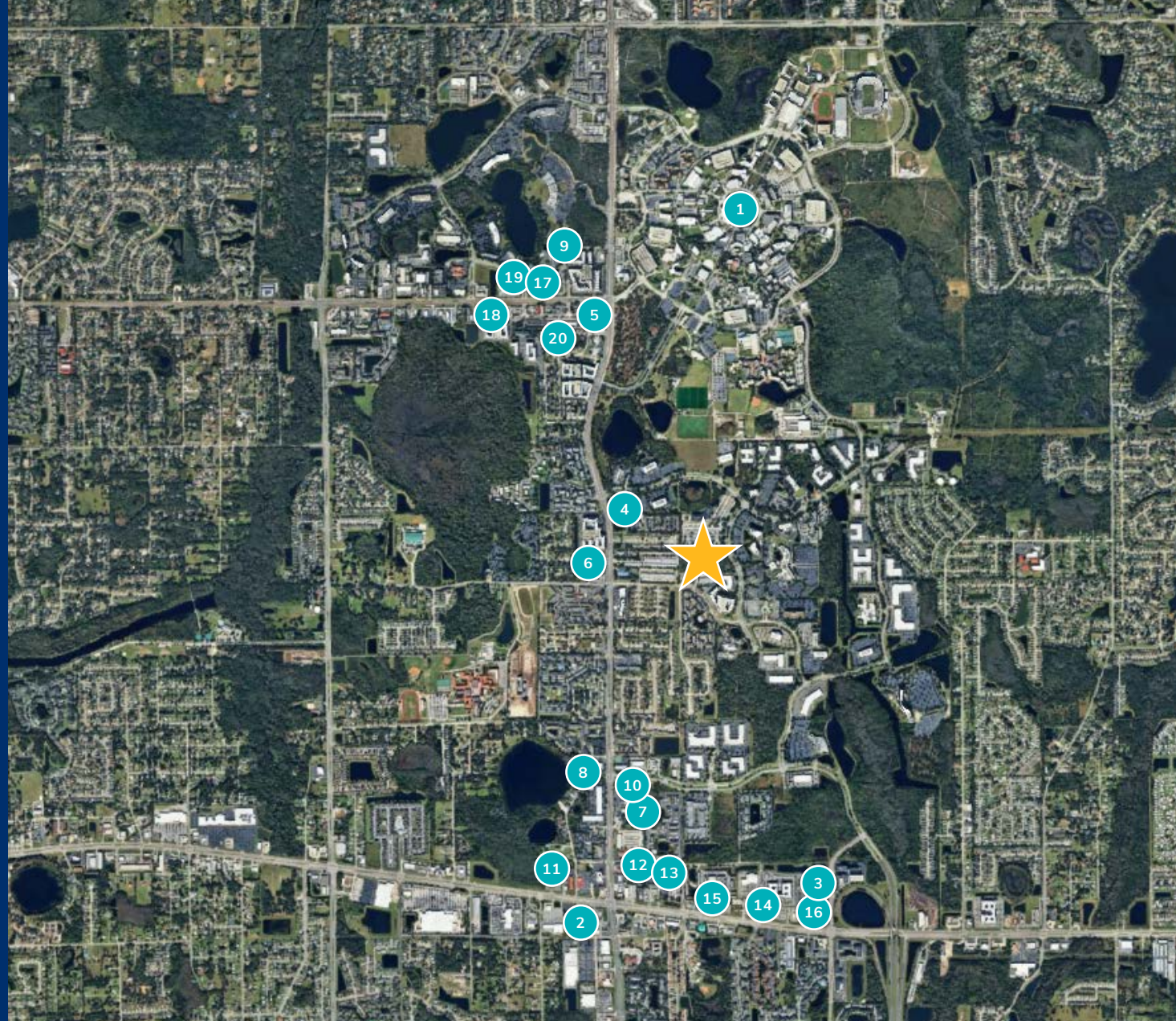
- Home to the Nation's Army, Navy, Airforce and Marine's Simulation Operations

- 1,027 Acre Campus-Like Office Park

- Employs More than 10,000 Employees

- 145 Companies

- 65 Buildings



Amenities

- | | | | |
|----------------------------------|---------------------------|------------------------------|-------------------------|
| 1. UNIVERSITY OF CENTRAL FLORIDA | 6. HOMEWOOD SUITES | 11. KOBE JAPANESE STEAKHOUSE | 16. WAWA |
| 2. ALAFAYA VILLAGE | 7. HILTON GARDEN INN | 12. GOODFELLA'S PIZZERIA | 17. STARBUCKS |
| 3. PUBLIX AT TOWN PARK | 8. SEASONS FLORIDA RESORT | 13. FABLE COFFEE & PASTRIES | 18. 4 RIVERS SMOKEHOUSE |
| 4. BANK OF AMERICA | 9. DOUBLE TREE HOTEL | 14. PDQ ORLANDO | 19. FIVE GUYS |
| 5. CHASE BANK | 10. SOCIAL EATS | 15. STEAK N' SHAKE | 20. SMOOTHIE KING |



Orlando International Airport

20 MINUTES



Downtown Orlando

15 MINUTES



I-4

15 MINUTES



Orlando Executive Airport

15 MINUTES



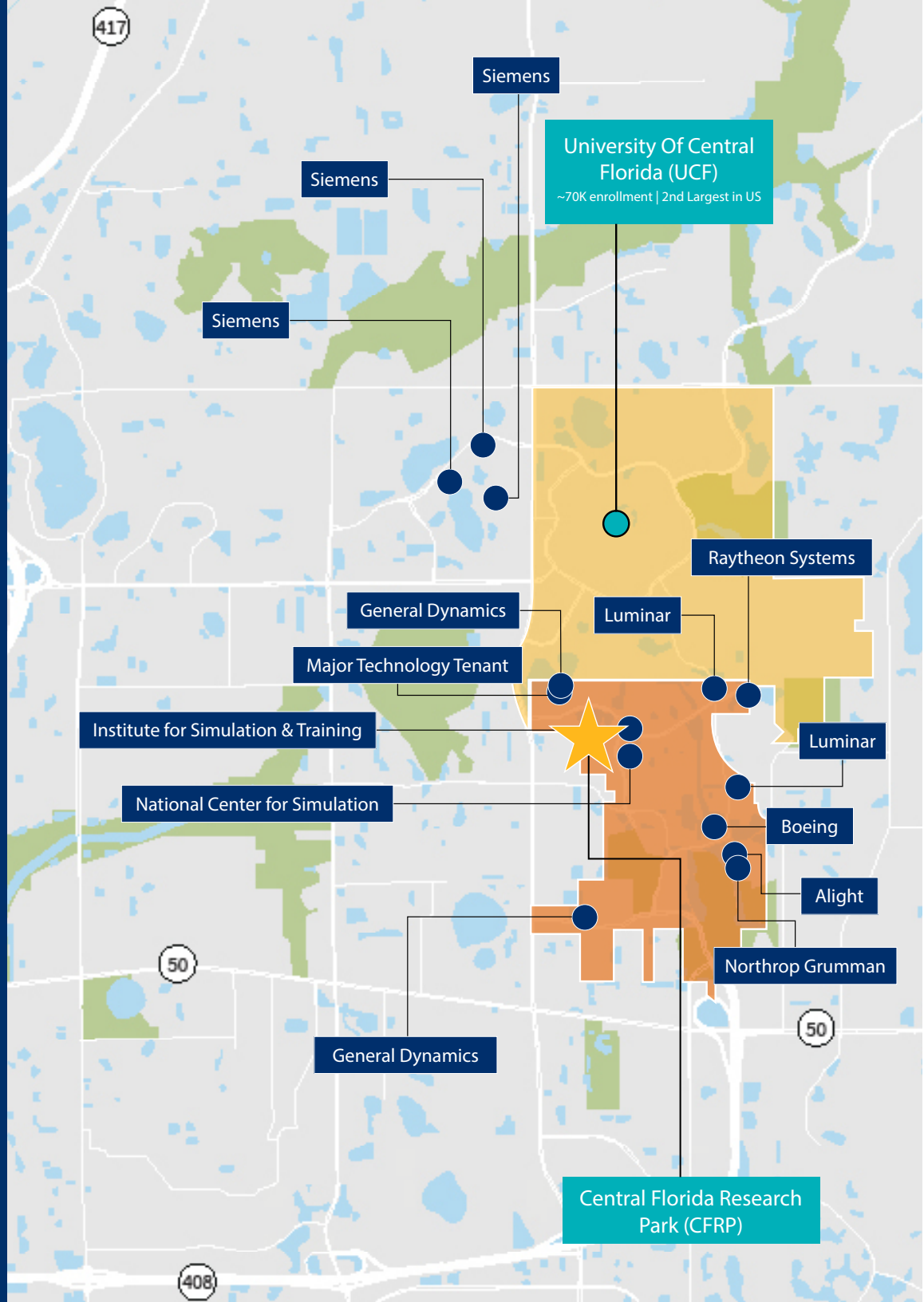
I-95

30 MINUTES



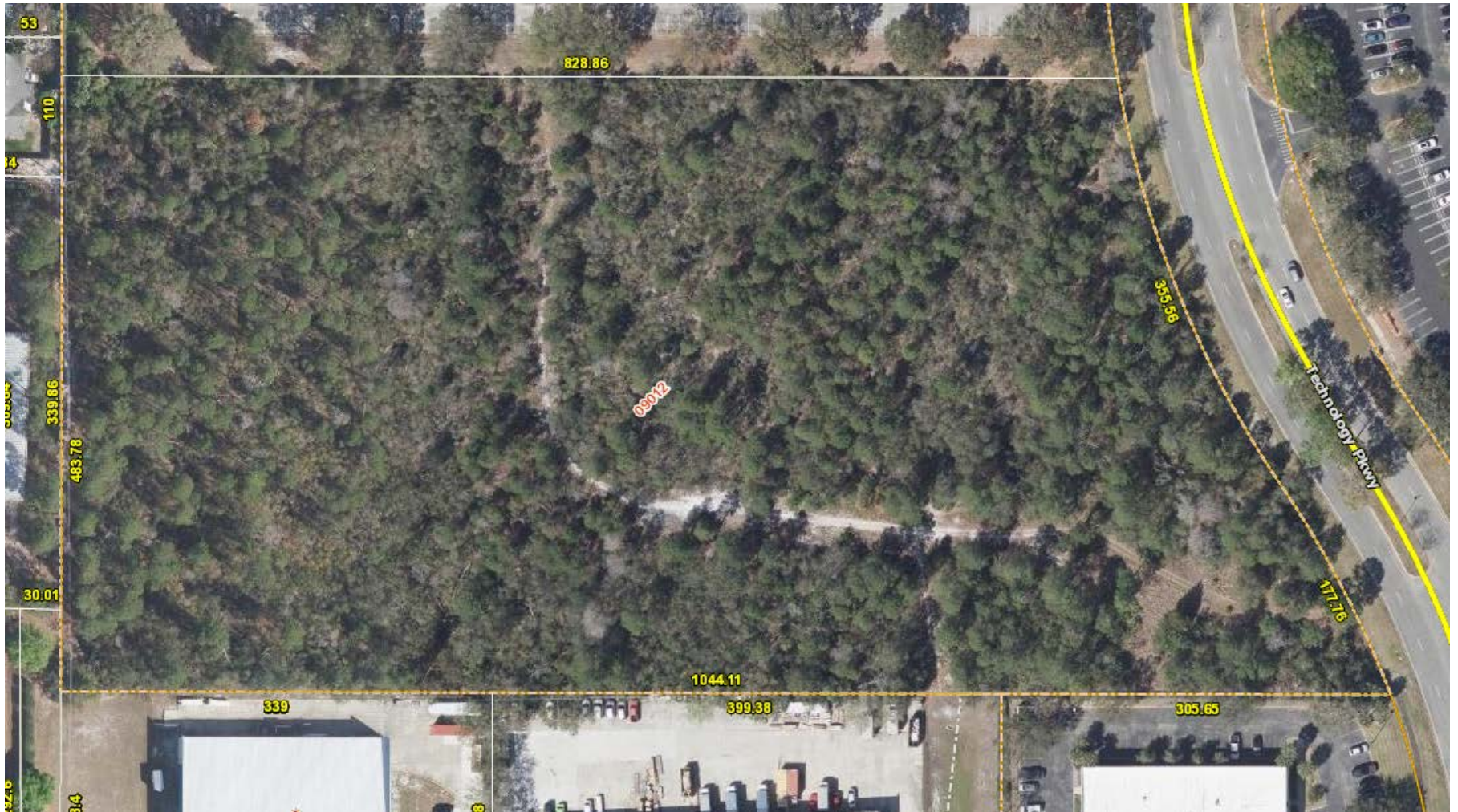
Cape Canaveral / Space Force

LESS THAN 60 MINUTES



Best remaining development site in the CFRP.
Rectangular site directly across from NAV AIR and PEO-STRI.
Perfect for owner/user development.

Land Parcel Aerial





10.24 Acres

ASKING PRICE: \$4,500,000

**Let's
Connect**

John Gilbert

john.gilbert@streamrealty.com

T 407.214.0099

**Copyright © 2024 Stream Realty
Partners, All rights reserved.**

The information contained herein was obtained from sources believed reliable; however, Stream Realty Partners, L.P. make no guarantees, warranties, or representations as to the completeness or accuracy thereof. The presentation of this property is submitted subject to errors, change of price, or conditions, prior sale or lease, or withdrawal without notice.