



Colliers



# For Lease

Premium office/warehouse space

640 Lakeview Plaza Blvd  
Worthington, OH 43085

Lakeview Commerce Center is a 4-building, multi-tenant, flex property totaling 96,782 SF. These buildings are in excellent condition and range from 22,187 to 28,160 SF. Each space offers above standard amenities, including full glass storefront windows with unique canopies, ample parking and rear truck access to grade level overhead doors. The property is located off Sancus Boulevard, north of I-270 and provides convenient access to I-270, I-71 and US-23.

*Available March 1, 2025.*

Lakeview Commerce  
Center is owned by:

**ARDEN** | LOGISTICS  
PARKS

Available Space

**1,678 ± SF**

Lease Rate

**\$10.00/SF NNN**

Operating Expenses  
(estimated 2024)

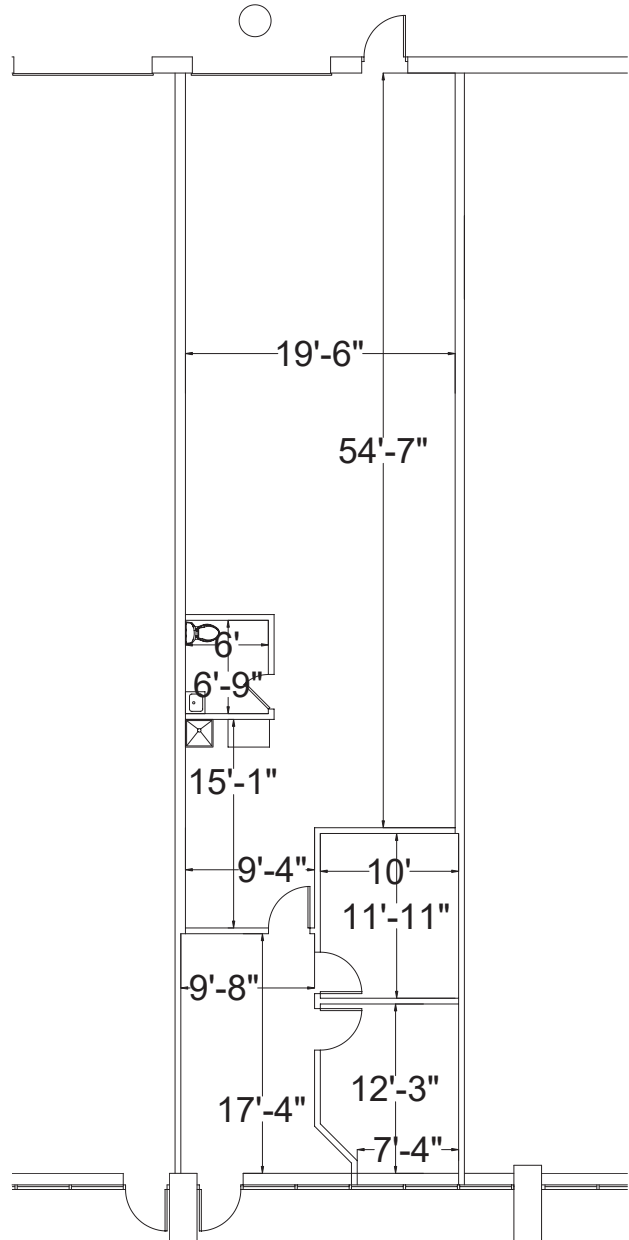
**\$5.45/SF**

# Building Amenities

640 Lakeview Plaza Blvd  
Worthington, OH 43085

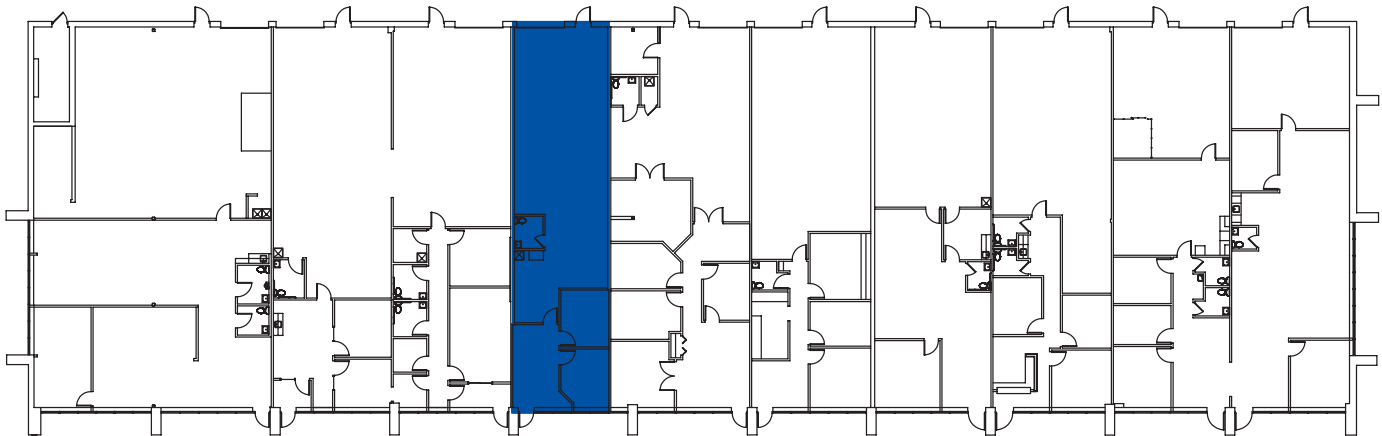
- > 1 drive-in door
- > Wet sprinkler system
- > 14' clear height
- > 50' x 39' column spacing
- > Ample parking
- > Year built: 1992

Suite	Total SF	Office SF	Warehouse SF	Docks/ Drive-ins	Availability
D	1,678	463	1,214	0/1	March 1, 2025



# Site Overview

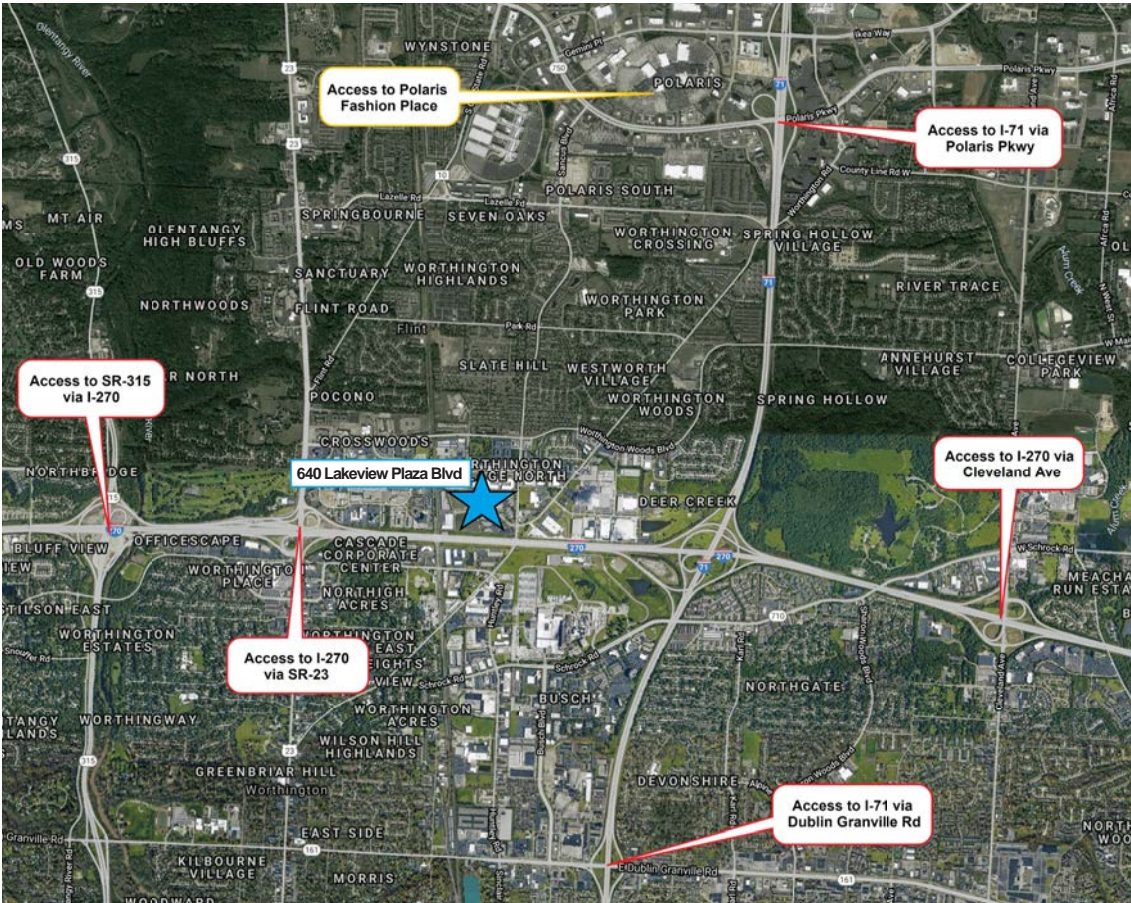
640 Lakeview Plaza Blvd  
Worthington, OH 43085





# Access

640 Lakeview Plaza Blvd  
Worthington, OH 43085



# Contact:

**Jonathan R. Schuen, SIOR**

614.437.4495

Columbus, OH

[jonathan.schuen@colliers.com](mailto:jonathan.schuen@colliers.com)

**Michael R. Linder, SIOR**

614.410.5628

Columbus, OH

[michael.linder@colliers.com](mailto:michael.linder@colliers.com)

**Shane E. Woloshan, SIOR**

614.410.5624

Columbus, OH

[shane.woloshan@colliers.com](mailto:shane.woloshan@colliers.com)

**Joel R. Yakovac, SIOR**

614.410.5654

Columbus, OH

[joel.yakovac@colliers.com](mailto:joel.yakovac@colliers.com)

Lakeview Commerce  
Center is owned by:

**ARDEN** | LOGISTICS  
PARKS

The information contained herein was obtained from sources believed reliable; however, Colliers International makes no guarantees, warranties, or representations as to the completeness or accuracy thereof. The presentation of this property is submitted subject to errors, omissions, change of price or conditions prior to sale or lease, or withdrawal without notice.

**Colliers | Greater Columbus Region**

Two Miranova Place, Suite 900

Columbus, OH 43215

[www.colliers.com](http://www.colliers.com)