

6610 E 121ST STREET

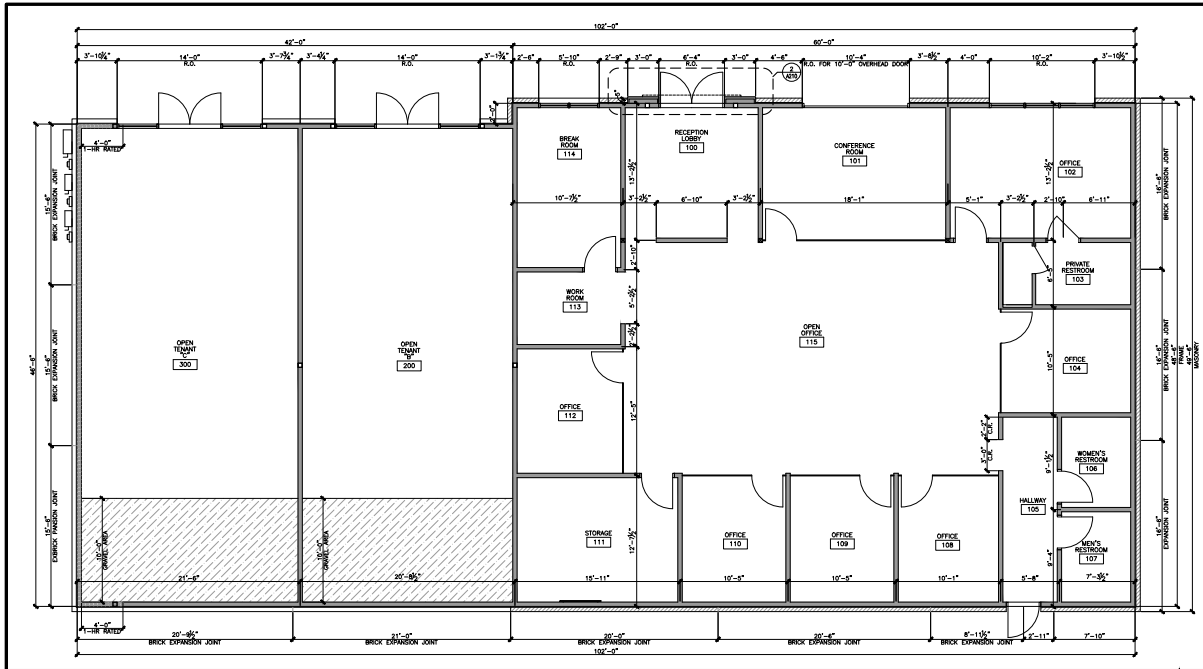
BIXBY, OK



OFFICE BUILDING FOR LEASE

SOUTH TULSA CO-WORKING SPACE WITH UPGRADED AMENITIES, CONFERENCE ROOMS, KITCHEN SPACE AND AMPLE PARKING. BUILDING IS LOCATED SOUTHEAST OF 121ST & SHERIDAN IN THE WOODMERE OFFICE PARK.

SPACES AVAILABLE STARTING AT \$1,200.00/MONTH, ALL BILLS PAID WITH INDIVIDUAL SIGNAGE AVAILABLE.



FRISBIE LOMBARDI COMMERCIAL REAL ESTATE SERVICES

918.747.7600 1516 S BOSTON, SUITE 214 | TULSA, OK 74119

WWW.FRISBIELOMBARDI.COM

