

SPECIAL PURPOSE FOR SALE

923 E 16TH ST

Ashtabula, OH 44004



PROPERTY DESCRIPTION

4,390 SF building previously used as a church in the heart of Ashtabula Harbor. Originally built for an Hungarian congregation in 1913, this historical structure needs a transformation. Recently occupied by Miracle Temple Church of God. Be part of Ashtabula Harbor revitalization with a litany of possibilities. All contents are included in said sale including pews, stain glass windows, and piano. Recent updates include an 7-year old roof and new split-zoned HVAC unit. Lower level includes kitchen, restroom, and large assembly area.

PROPERTY HIGHLIGHTS

- Built in 1913
- Zoned Commercial
- Historic charm
- High visibility location

OFFERING SUMMARY

Sale Price:	\$94,000
Number of Units:	6
Lot Size:	0.21 Acres
Building Size:	4,390 SF

DEMOGRAPHICS	0.3 MILES	0.5 MILES	1 MILE
Total Households	215	510	1,550
Total Population	457	1,092	3,456
Average HH Income	\$47,652	\$47,005	\$52,304

We obtained the information above from sources we believe to be reliable. However, we have not verified its accuracy and make no guarantee, warranty or representation about it. It is submitted subject to the possibility of errors, omissions, change of price, rental or other conditions, prior sale, lease or financing, or withdrawal without notice. We include projections, opinions, assumptions or estimates for example only, and they may not represent current or future performance of the property. You and your tax and legal advisors should conduct your own investigation of the property and transaction.

RICK OSBORNE JR.

Managing Director Of Commercial Real Estate
O: 440.299.5190
C: 216.219.0290
rick.osbornejr@kw.com
OH #2010001710

KW COMMERCIAL

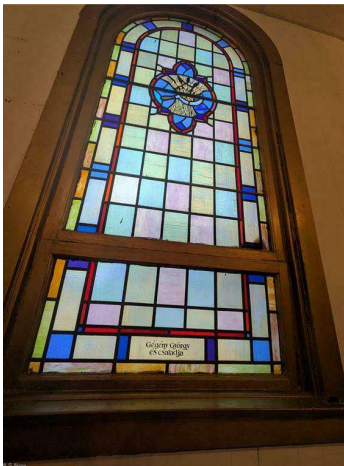
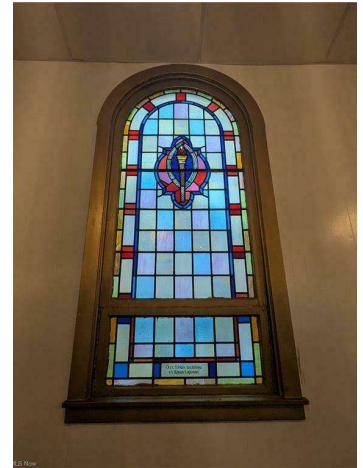
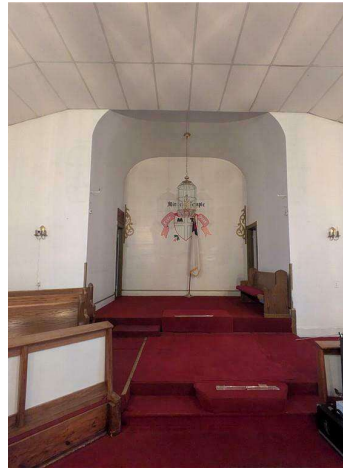
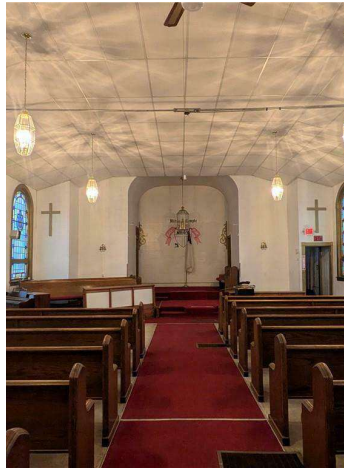
440.255.5500
7400 Center Street
Mentor, OH 44060

Each Office Independently Owned and Operated osbornegrouphio.com

SPECIAL PURPOSE FOR SALE

923 E 16TH ST

Ashtabula, OH 44004



We obtained the information above from sources we believe to be reliable. However, we have not verified its accuracy and make no guarantee, warranty or representation about it. It is submitted subject to the possibility of errors, omissions, change of price, rental or other conditions, prior sale, lease or financing, or withdrawal without notice. We include projections, opinions, assumptions or estimates for example only, and they may not represent current or future performance of the property. You and your tax and legal advisors should conduct your own investigation of the property and transaction.

RICK OSBORNE JR.

Managing Director Of Commercial Real Estate

O: 440.299.5190

C: 216.219.0290

rick.osbornejr@kw.com

OH #2010001710

KW COMMERCIAL

440.255.5500

7400 Center Street

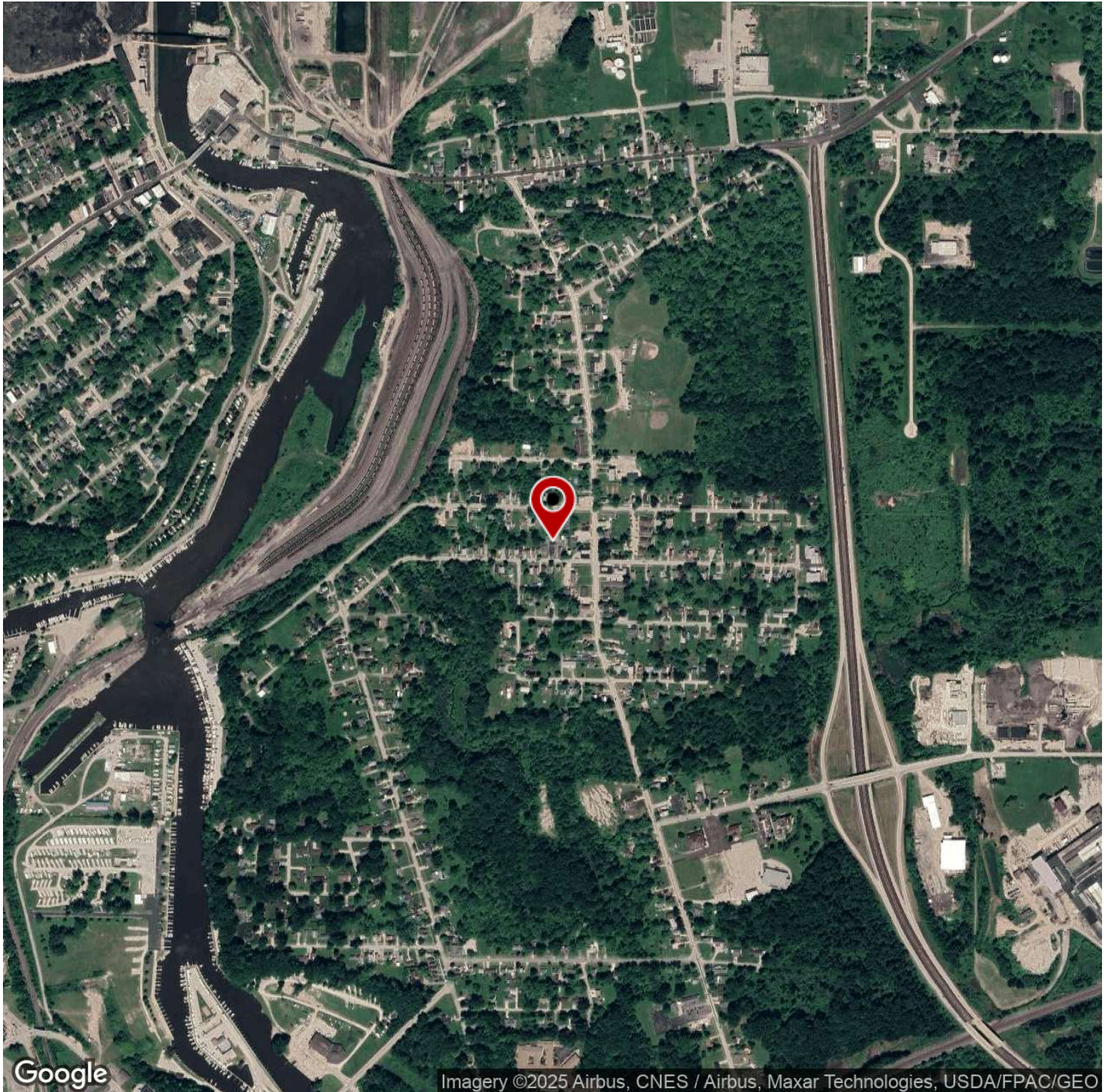
Mentor, OH 44060

Each Office Independently Owned and Operated osbornegrouphio.com

SPECIAL PURPOSE FOR SALE

923 E 16TH ST

Ashtabula, OH 44004



We obtained the information above from sources we believe to be reliable. However, we have not verified its accuracy and make no guarantee, warranty or representation about it. It is submitted subject to the possibility of errors, omissions, change of price, rental or other conditions, prior sale, lease or financing, or withdrawal without notice. We include projections, opinions, assumptions or estimates for example only, and they may not represent current or future performance of the property. You and your tax and legal advisors should conduct your own investigation of the property and transaction.

RICK OSBORNE JR.
Managing Director Of Commercial Real Estate
O: 440.299.5190
C: 216.219.0290
rick.osbornejr@kw.com
OH #2010001710

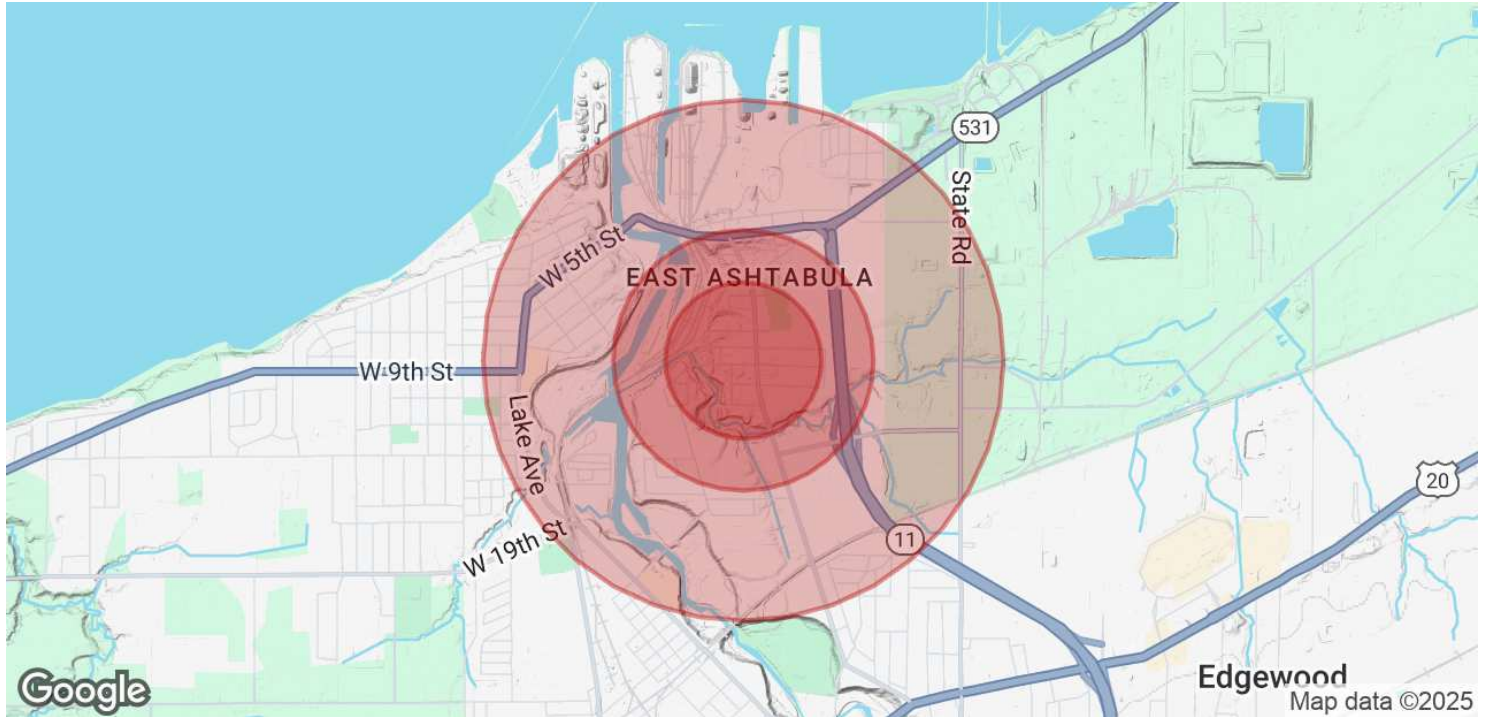
KW COMMERCIAL
440.255.5500
7400 Center Street
Mentor, OH 44060

Each Office Independently Owned and Operated osbornegroupohio.com

SPECIAL PURPOSE FOR SALE

923 E 16TH ST

Ashtabula, OH 44004



POPULATION	0.3 MILES	0.5 MILES	1 MILE
Total Population	457	1,092	3,456
Average Age	47	46	44
Average Age (Male)	44	44	42
Average Age (Female)	50	49	45

HOUSEHOLDS & INCOME	0.3 MILES	0.5 MILES	1 MILE
Total Households	215	510	1,550
# of Persons per HH	2.1	2.1	2.2
Average HH Income	\$47,652	\$47,005	\$52,304
Average House Value	\$102,265	\$104,580	\$111,810

Demographics data derived from AlphaMap

We obtained the information above from sources we believe to be reliable. However, we have not verified its accuracy and make no guarantee, warranty or representation about it. It is submitted subject to the possibility of errors, omissions, change of price, rental or other conditions, prior sale, lease or financing, or withdrawal without notice. We include projections, opinions, assumptions or estimates for example only, and they may not represent current or future performance of the property. You and your tax and legal advisors should conduct your own investigation of the property and transaction.

RICK OSBORNE JR.
Managing Director Of Commercial Real Estate
O: 440.299.5190
C: 216.219.0290
rick.osbornejr@kw.com
OH #2010001710

KW COMMERCIAL
440.255.5500
7400 Center Street
Mentor, OH 44060

Each Office Independently Owned and Operated osbornegrouphio.com

SPECIAL PURPOSE FOR SALE

923 E 16TH ST

Ashtabula, OH 44004



RICK OSBORNE JR.

Managing Director of Commercial Real Estate

rick.osbornejr@kw.com

Direct: 440.299.5190 | Cell: 216.219.0290

OH #2010001710

PROFESSIONAL BACKGROUND

Rick Osborne Jr. has been involved in the management, construction, and sale of commercial properties in Northeast Ohio for over 30 years. During this time he has developed, constructed, and owned nearly 2,500,000 square feet of retail and industrial space in Lake County and throughout Northeast Ohio.

Rick Jr. is an Ohio licensed sales agent and has extensive experience developing, reviewing, and generating multiple lease agreements and purchase agreements as well as securing funding and financing for hundreds of projects and properties.

Rick Jr. formed The Osborne Group as the commercial arm of Keller Williams Greater Cleveland Northeast. Rick is part of KW Commercial and is a leader commercial real estate Northeast Ohio.

EDUCATION

University of Mount Union--Bachelors of Science--1988-1992

Bowling Green State University--Master of Science--Economic Geology--1992-1994

Lakeland Community College-2010--Ohio Sales Person License--Real Estate

MEMBERSHIPS

Rick Jr. is a member of ICSC and an active board member for the Lakeland Foundation, Andrews Osborne Academy, and Mentor Chamber of Commerce. Rick Jr. enjoys hiking, sports, and geology and is a member of Appalachian Trail Conservancy and the Buckeye Trail with logging over 2,000 trail miles to date.

Osborne Group - KW Commercial

7400 Center Street
Mentor, OH 44060
440.255.5500

We obtained the information above from sources we believe to be reliable. However, we have not verified its accuracy and make no guarantee, warranty or representation about it. It is submitted subject to the possibility of errors, omissions, change of price, rental or other conditions, prior sale, lease or financing, or withdrawal without notice. We include projections, opinions, assumptions or estimates for example only, and they may not represent current or future performance of the property. You and your tax and legal advisors should conduct your own investigation of the property and transaction.

RICK OSBORNE JR.

Managing Director Of Commercial Real Estate

O: 440.299.5190

C: 216.219.0290

rick.osbornejr@kw.com

OH #2010001710

KW COMMERCIAL

440.255.5500

7400 Center Street

Mentor, OH 44060

Each Office Independently Owned and Operated osbornegrouphio.com