

**OFFICE SPACE FOR LEASE**  
**2,240 SF – 14,494 SF SPACES**  
**AVAILABLE**

**PROPERTY FEATURES**

- 287,990 SF Class A office tower
- Full floor options available
- Upscale lobby
- Convenient access to all downtown interstates
- Close proximity to convention center, KFC Yum! Center, hotels, restaurants, and shopping
- On-site amenities include:
  - Restaurant
  - ATM machine
  - Wi-Fi hotspot
  - On-site property management
  - On-site security

**LG&E CENTER**



For more information, please contact:

**E.P. SCHERER**  
**Senior Director**  
502 589 5150 ext. 234  
[epscherer@commercialkentucky.com](mailto:epscherer@commercialkentucky.com)

**SAM ENGLISH, CFA**  
**Senior Director**  
502 589 5150 ext. 244  
[senglish@commercialkentucky.com](mailto:senglish@commercialkentucky.com)

333 E. Main Street, Suite 510  
Louisville, KY 40202  
phone: +1 502 589 5150  
[www.CommercialKentucky.com](http://www.CommercialKentucky.com)

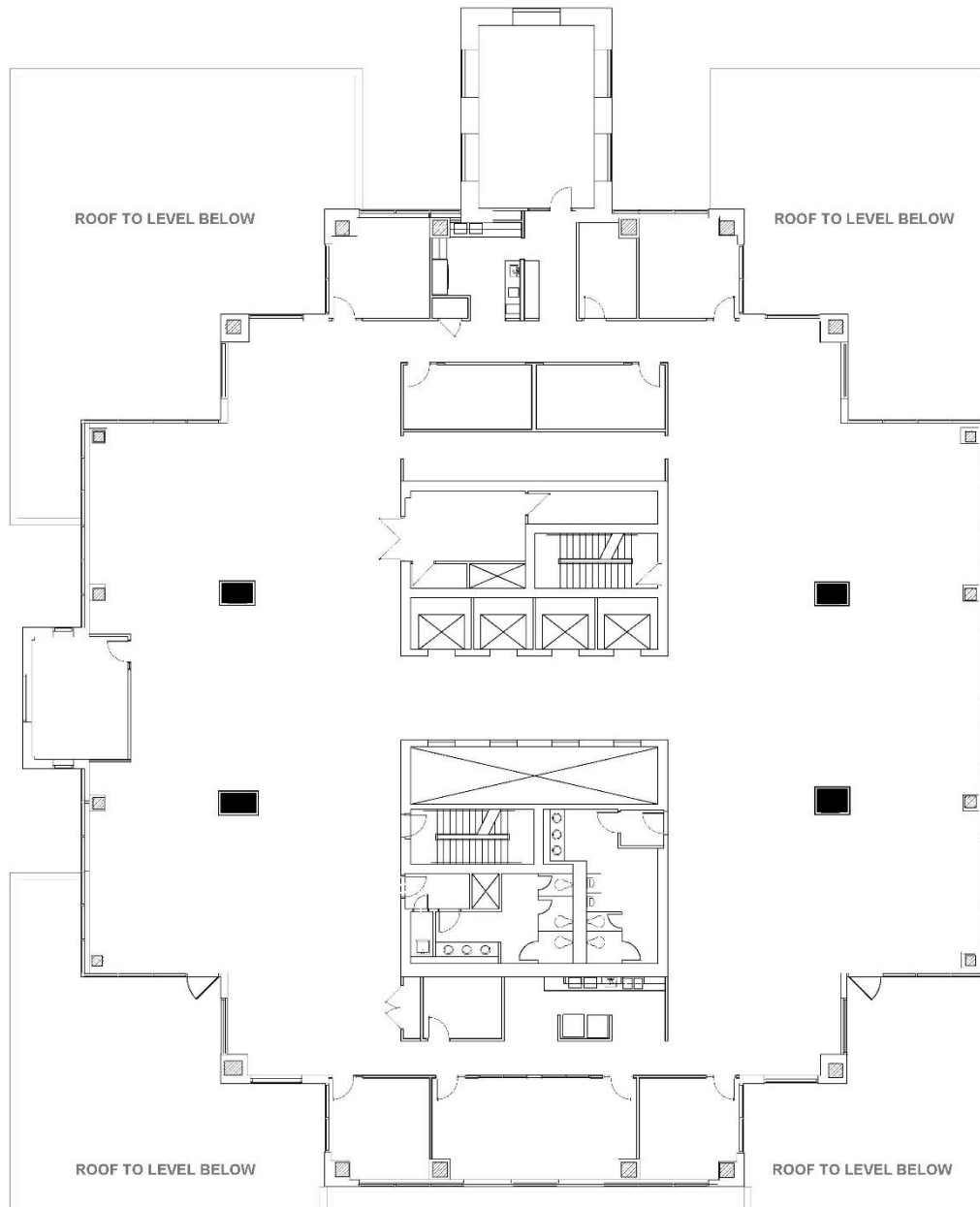
Independently Owned and Operated / A Member of the Cushman & Wakefield Alliance  
©2018 Cushman & Wakefield. All rights reserved. The information contained in this communication is strictly confidential. This information has been obtained from sources believed to be reliable but has not been verified. NO WARRANTY OR REPRESENTATION, EXPRESS OR IMPLIED, IS MADE AS TO THE CONDITION OF THE PROPERTY (OR PROPERTIES) REFERENCED HEREIN OR AS TO THE ACCURACY OR COMPLETENESS OF THE INFORMATION CONTAINED HEREIN, AND SAME IS SUBMITTED SUBJECT TO ERRORS, OMISSIONS, CHANGE OF PRICE, RENTAL OR OTHER CONDITIONS, WITHDRAWAL WITHOUT NOTICE, AND TO ANY SPECIAL LISTING CONDITIONS IMPOSED BY THE PROPERTY OWNER(S). ANY PROJECTIONS, OPINIONS OR ESTIMATES ARE SUBJECT TO UNCERTAINTY AND DO NOT SIGNIFY CURRENT OR FUTURE PROPERTY PERFORMANCE.



**CUSHMAN &  
WAKEFIELD**

Commercial Kentucky

**FOR LEASE**  
**220 WEST MAIN STREET**  
Louisville, KY 40202



**3<sup>RD</sup> Floor Plan**

For more information, please contact:

**E.P. SCHERER**  
Senior Director  
502 589 5150 ext. 234  
[epscherer@commercialkentucky.com](mailto:epscherer@commercialkentucky.com)

**SAM ENGLISH, CFA**  
Senior Director  
502 589 5150 ext. 244  
[senglish@commercialkentucky.com](mailto:senglish@commercialkentucky.com)

333 E. Main Street, Suite 510  
Louisville, KY 40202  
phone: +1 502 589 5150  
[www.CommercialKentucky.com](http://www.CommercialKentucky.com)

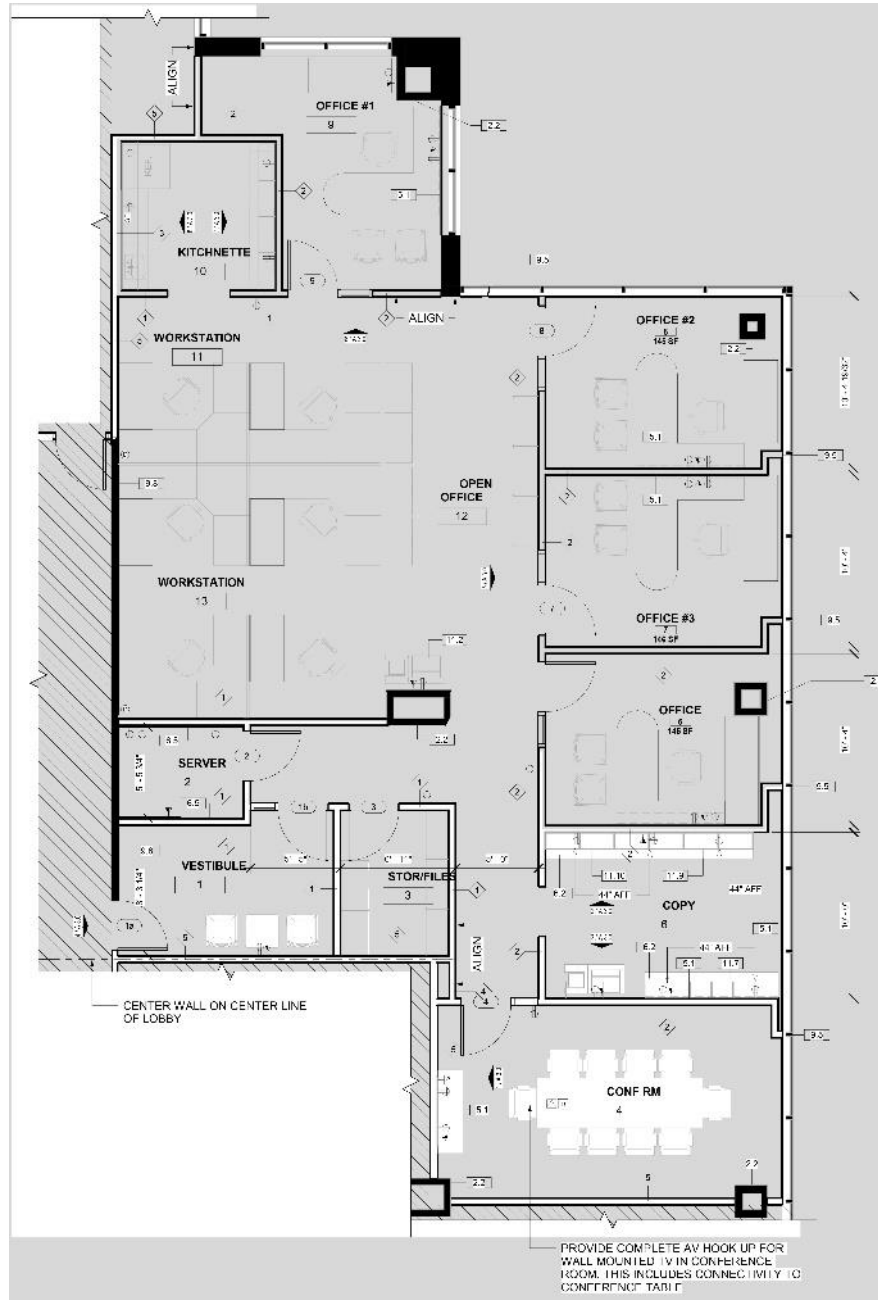
Independently Owned and Operated / A Member of the Cushman & Wakefield Alliance  
©2018 Cushman & Wakefield. All rights reserved. The information contained in this communication is strictly confidential. This information has been obtained from sources believed to be reliable but has not been verified. NO WARRANTY OR REPRESENTATION, EXPRESS OR IMPLIED, IS MADE AS TO THE CONDITION OF THE PROPERTY (OR PROPERTIES) REFERENCED HEREIN OR AS TO THE ACCURACY OR COMPLETENESS OF THE INFORMATION CONTAINED HEREIN, AND SAME IS SUBMITTED SUBJECT TO ERRORS, OMISSIONS, CHANGE OF PRICE, RENTAL OR OTHER CONDITIONS, WITHDRAWAL WITHOUT NOTICE, AND TO ANY SPECIAL LISTING CONDITIONS IMPOSED BY THE PROPERTY OWNER(S). ANY PROJECTIONS, OPINIONS OR ESTIMATES ARE SUBJECT TO UNCERTAINTY AND DO NOT SIGNIFY CURRENT OR FUTURE PROPERTY PERFORMANCE.



**CUSHMAN &  
WAKEFIELD**

Commercial Kentucky

**FOR LEASE**  
**220 WEST MAIN STREET**  
Louisville, KY 40202



## 18<sup>th</sup> Floor Plan

For more information, please contact:

**E.P. SCHERER**  
Senior Director  
502 589 5150 ext. 234  
[epscherer@commercialkentucky.com](mailto:epscherer@commercialkentucky.com)

**SAM ENGLISH, CFA**  
Senior Director  
502 589 5150 ext. 244  
[senglish@commercialkentucky.com](mailto:senglish@commercialkentucky.com)

333 E. Main Street, Suite 510  
Louisville, KY 40202  
phone: +1 502 589 5150  
[www.CommercialKentucky.com](http://www.CommercialKentucky.com)

Independently Owned and Operated / A Member of the Cushman & Wakefield Alliance  
©2018 Cushman & Wakefield. All rights reserved. The information contained in this communication is strictly confidential. This information has been obtained from sources believed to be reliable but has not been verified. NO WARRANTY OR REPRESENTATION, EXPRESS OR IMPLIED, IS MADE AS TO THE CONDITION OF THE PROPERTY (OR PROPERTIES) REFERENCED HEREIN OR AS TO THE ACCURACY OR COMPLETENESS OF THE INFORMATION CONTAINED HEREIN, AND SAME IS SUBMITTED SUBJECT TO ERRORS, OMISSIONS, CHANGE OF PRICE, RENTAL OR OTHER CONDITIONS, WITHDRAWAL WITHOUT NOTICE, AND TO ANY SPECIAL LISTING CONDITIONS IMPOSED BY THE PROPERTY OWNER(S). ANY PROJECTIONS, OPINIONS OR ESTIMATES ARE SUBJECT TO UNCERTAINTY AND DO NOT SIGNIFY CURRENT OR FUTURE PROPERTY PERFORMANCE.



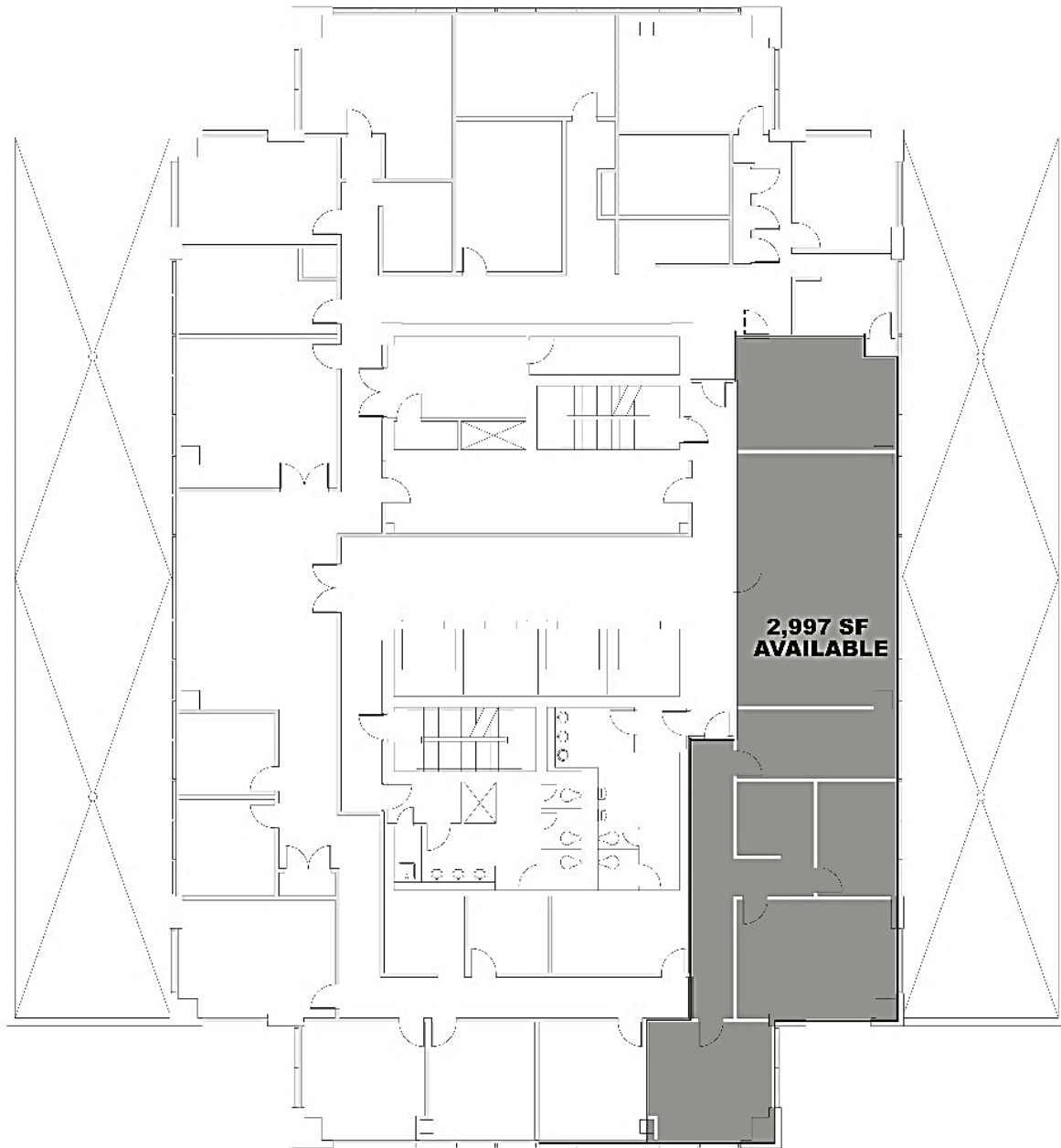
**CUSHMAN &  
WAKEFIELD**

Commercial Kentucky

**FOR LEASE**

**220 WEST MAIN STREET**

**Louisville, KY 40202**



**19<sup>th</sup> Floor Plan**

For more information, please contact:

**E.P. SCHERER**  
**Senior Director**  
502 589 5150 ext. 234  
[epscherer@commercialkentucky.com](mailto:epscherer@commercialkentucky.com)

**SAM ENGLISH, CFA**  
**Senior Director**  
502 589 5150 ext. 244  
[senglish@commercialkentucky.com](mailto:senglish@commercialkentucky.com)

333 E. Main Street, Suite 510  
Louisville, KY 40202  
phone: +1 502 589 5150  
[www.CommercialKentucky.com](http://www.CommercialKentucky.com)

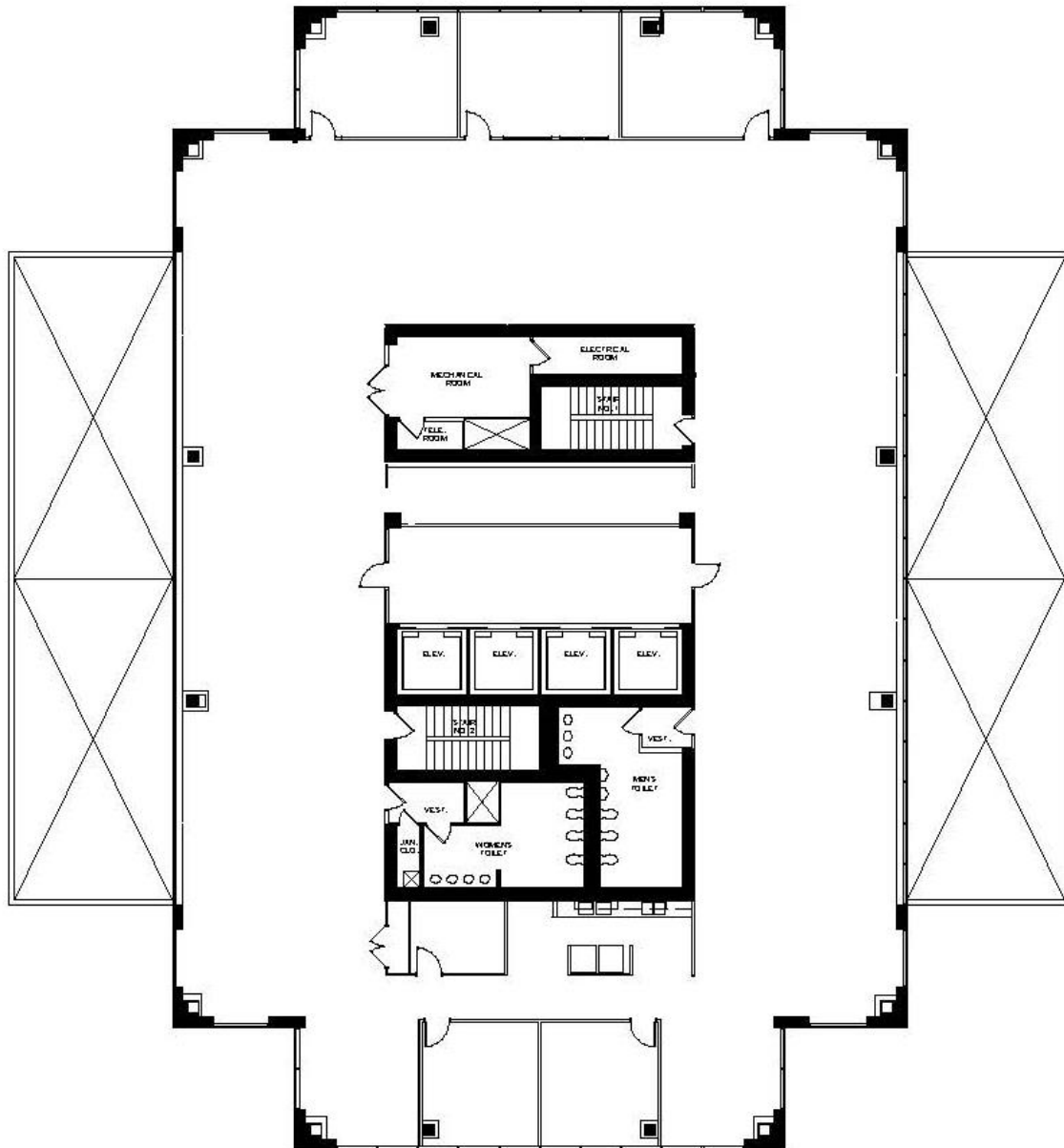
Independently Owned and Operated / A Member of the Cushman & Wakefield Alliance  
©2018 Cushman & Wakefield. All rights reserved. The information contained in this communication is strictly confidential. This information has been obtained from sources believed to be reliable but has not been verified. NO WARRANTY OR REPRESENTATION, EXPRESS OR IMPLIED, IS MADE AS TO THE CONDITION OF THE PROPERTY (OR PROPERTIES) REFERENCED HEREIN OR AS TO THE ACCURACY OR COMPLETENESS OF THE INFORMATION CONTAINED HEREIN, AND SAME IS SUBMITTED SUBJECT TO ERRORS, OMISSIONS, CHANGE OF PRICE, RENTAL OR OTHER CONDITIONS, WITHDRAWAL WITHOUT NOTICE, AND TO ANY SPECIAL LISTING CONDITIONS IMPOSED BY THE PROPERTY OWNER(S). ANY PROJECTIONS, OPINIONS OR ESTIMATES ARE SUBJECT TO UNCERTAINTY AND DO NOT SIGNIFY CURRENT OR FUTURE PROPERTY PERFORMANCE.



**CUSHMAN &  
WAKEFIELD**

Commercial Kentucky

**FOR LEASE**  
**220 WEST MAIN STREET**  
Louisville, KY 40202



**20<sup>th</sup> Floor Plan**

For more information, please contact:

**E.P. SCHERER**  
**Senior Director**  
502 589 5150 ext. 234  
[epscherer@commercialkentucky.com](mailto:epscherer@commercialkentucky.com)

**SAM ENGLISH, CFA**  
**Senior Director**  
502 589 5150 ext. 244  
[senglish@commercialkentucky.com](mailto:senglish@commercialkentucky.com)

333 E. Main Street, Suite 510  
Louisville, KY 40202  
phone: +1 502 589 5150  
[www.CommercialKentucky.com](http://www.CommercialKentucky.com)

Independently Owned and Operated / A Member of the Cushman & Wakefield Alliance  
©2018 Cushman & Wakefield. All rights reserved. The information contained in this communication is strictly confidential. This information has been obtained from sources believed to be reliable but has not been verified. NO WARRANTY OR REPRESENTATION, EXPRESS OR IMPLIED, IS MADE AS TO THE CONDITION OF THE PROPERTY (OR PROPERTIES) REFERENCED HEREIN OR AS TO THE ACCURACY OR COMPLETENESS OF THE INFORMATION CONTAINED HEREIN, AND SAME IS SUBMITTED SUBJECT TO ERRORS, OMISSIONS, CHANGE OF PRICE, RENTAL OR OTHER CONDITIONS, WITHDRAWAL WITHOUT NOTICE, AND TO ANY SPECIAL LISTING CONDITIONS IMPOSED BY THE PROPERTY OWNER(S). ANY PROJECTIONS, OPINIONS OR ESTIMATES ARE SUBJECT TO UNCERTAINTY AND DO NOT SIGNIFY CURRENT OR FUTURE PROPERTY PERFORMANCE.

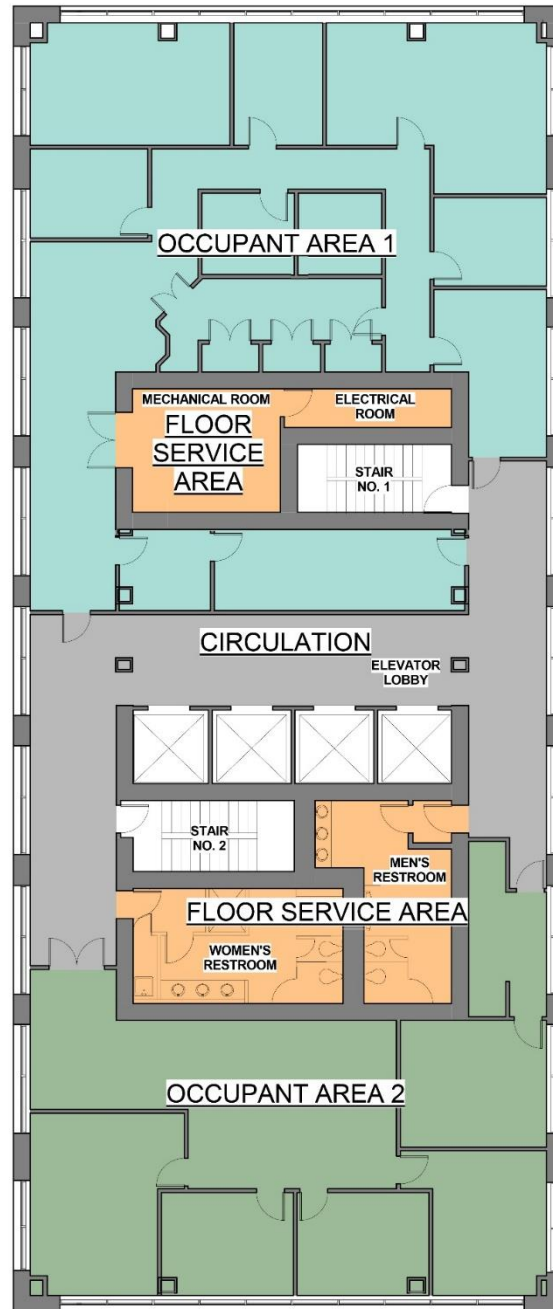




**CUSHMAN &  
WAKEFIELD**

Commercial Kentucky

**FOR LEASE**  
**220 WEST MAIN STREET**  
Louisville, KY 40202



**22<sup>nd</sup> Floor Plan**

For more information, please contact:

**E.P. SCHERER**  
**Senior Director**  
502 589 5150 ext. 234  
[epscherer@commercialkentucky.com](mailto:epscherer@commercialkentucky.com)

**SAM ENGLISH, CFA**  
**Senior Director**  
502 589 5150 ext. 244  
[senglish@commercialkentucky.com](mailto:senglish@commercialkentucky.com)

333 E. Main Street, Suite 510  
Louisville, KY 40202  
phone: +1 502 589 5150  
[www.CommercialKentucky.com](http://www.CommercialKentucky.com)

Independently Owned and Operated / A Member of the Cushman & Wakefield Alliance  
©2018 Cushman & Wakefield. All rights reserved. The information contained in this communication is strictly confidential. This information has been obtained from sources believed to be reliable but has not been verified. NO WARRANTY OR REPRESENTATION, EXPRESS OR IMPLIED, IS MADE AS TO THE CONDITION OF THE PROPERTY (OR PROPERTIES) REFERENCED HEREIN OR AS TO THE ACCURACY OR COMPLETENESS OF THE INFORMATION CONTAINED HEREIN, AND SAME IS SUBMITTED SUBJECT TO ERRORS, OMISSIONS, CHANGE OF PRICE, RENTAL OR OTHER CONDITIONS, WITHDRAWAL WITHOUT NOTICE, AND TO ANY SPECIAL LISTING CONDITIONS IMPOSED BY THE PROPERTY OWNER(S). ANY PROJECTIONS, OPINIONS OR ESTIMATES ARE SUBJECT TO UNCERTAINTY AND DO NOT SIGNIFY CURRENT OR FUTURE PROPERTY PERFORMANCE.



For more information, please contact:

**E.P. SCHERER**  
**Senior Director**  
502 589 5150 ext. 234  
[epscherer@commercialkentucky.com](mailto:epscherer@commercialkentucky.com)

**SAM ENGLISH, CFA**  
**Senior Director**  
502 589 5150 ext. 244  
[senglish@commercialkentucky.com](mailto:senglish@commercialkentucky.com)

333 E. Main Street, Suite 510  
Louisville, KY 40202  
phone: +1 502 589 5150  
[www.CommercialKentucky.com](http://www.CommercialKentucky.com)

Independently Owned and Operated / A Member of the Cushman & Wakefield Alliance  
©2018 Cushman & Wakefield. All rights reserved. The information contained in this communication is strictly confidential. This information has been obtained from sources believed to be reliable but has not been verified. NO WARRANTY OR REPRESENTATION, EXPRESS OR IMPLIED, IS MADE AS TO THE CONDITION OF THE PROPERTY (OR PROPERTIES) REFERENCED HEREIN OR AS TO THE ACCURACY OR COMPLETENESS OF THE INFORMATION CONTAINED HEREIN, AND SAME IS SUBMITTED SUBJECT TO ERRORS, OMISSIONS, CHANGE OF PRICE, RENTAL OR OTHER CONDITIONS, WITHDRAWAL WITHOUT NOTICE, AND TO ANY SPECIAL LISTING CONDITIONS IMPOSED BY THE PROPERTY OWNER(S). ANY PROJECTIONS, OPINIONS OR ESTIMATES ARE SUBJECT TO UNCERTAINTY AND DO NOT SIGNIFY CURRENT OR FUTURE PROPERTY PERFORMANCE.





**Aerial Map**



For more information, please contact:

**E.P. SCHERER**  
Senior Director  
502 589 5150 ext. 234  
[epscherer@commercialkentucky.com](mailto:epscherer@commercialkentucky.com)

**SAM ENGLISH, CFA**  
Senior Director  
502 589 5150 ext. 244  
[senglish@commercialkentucky.com](mailto:senglish@commercialkentucky.com)

333 E. Main Street, Suite 510  
Louisville, KY 40202  
phone: +1 502 589 5150  
[www.CommercialKentucky.com](http://www.CommercialKentucky.com)

Independently Owned and Operated / A Member of the Cushman & Wakefield Alliance  
©2018 Cushman & Wakefield. All rights reserved. The information contained in this communication is strictly confidential. This information has been obtained from sources believed to be reliable but has not been verified. NO WARRANTY OR REPRESENTATION, EXPRESS OR IMPLIED, IS MADE AS TO THE CONDITION OF THE PROPERTY (OR PROPERTIES) REFERENCED HEREIN OR AS TO THE ACCURACY OR COMPLETENESS OF THE INFORMATION CONTAINED HEREIN, AND SAME IS SUBMITTED SUBJECT TO ERRORS, OMISSIONS, CHANGE OF PRICE, RENTAL OR OTHER CONDITIONS, WITHDRAWAL WITHOUT NOTICE, AND TO ANY SPECIAL LISTING CONDITIONS IMPOSED BY THE PROPERTY OWNER(S). ANY PROJECTIONS, OPINIONS OR ESTIMATES ARE SUBJECT TO UNCERTAINTY AND DO NOT SIGNIFY CURRENT OR FUTURE PROPERTY PERFORMANCE.