

GALPIN BLVD & W 78TH ST FOR SALE



HWY 5 SITES

CHANHASSEN, MINNESOTA

SKIP MELIN
Senior Director
+1 952 465 3377
william.melin@cushwake.com

BEN DREW
Director
+1 952 210 4637
ben.drew@cushwake.com

AMBER VICKERMAN
Associate
+1 763 302 9337
amber.vickerman@cushwake.com



PROPERTY INFORMATION

PID #: 25.0101810 & 25.0101800

Developable Acres: A: 2.2 Acres B: 0.8 Acres*

Zoning: PUDRC - Planned Unit Development/Regional Commercial

**Based on National Wetland Inventory database.*

Property Highlights

- Sewer and water available
- Zoned Planned Unit Development
- +/- 28,000 vehicles per day on Hwy 5
- New Roundabout at 78th St & Galpin Blvd
- City drainage easement on North parcel (shown on aerial)

Permitted Land Uses (Included in PUD)

- Retail
- Restaurant
- Office
- Business/Services
- Medical
- School



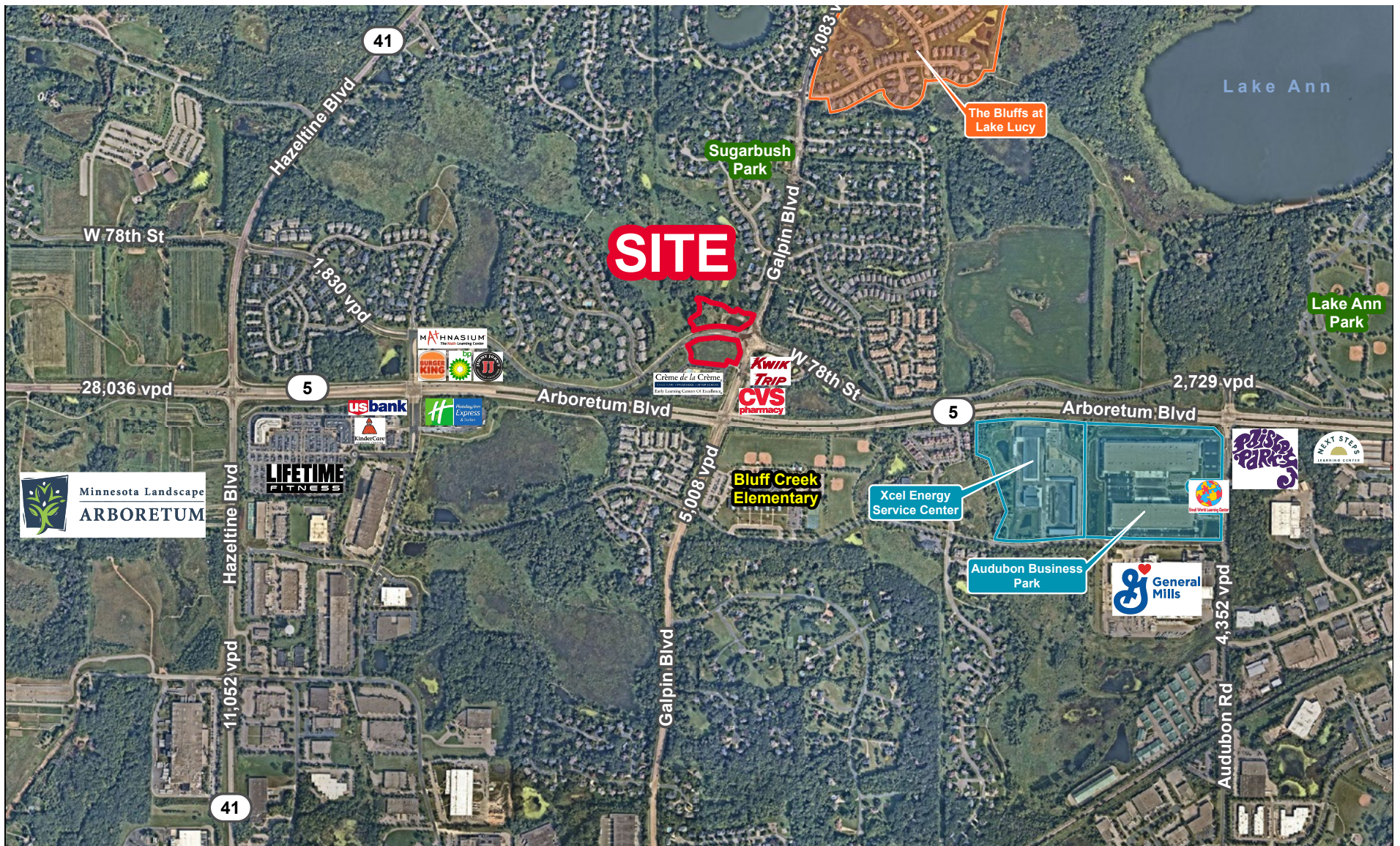
Demographics (2025)

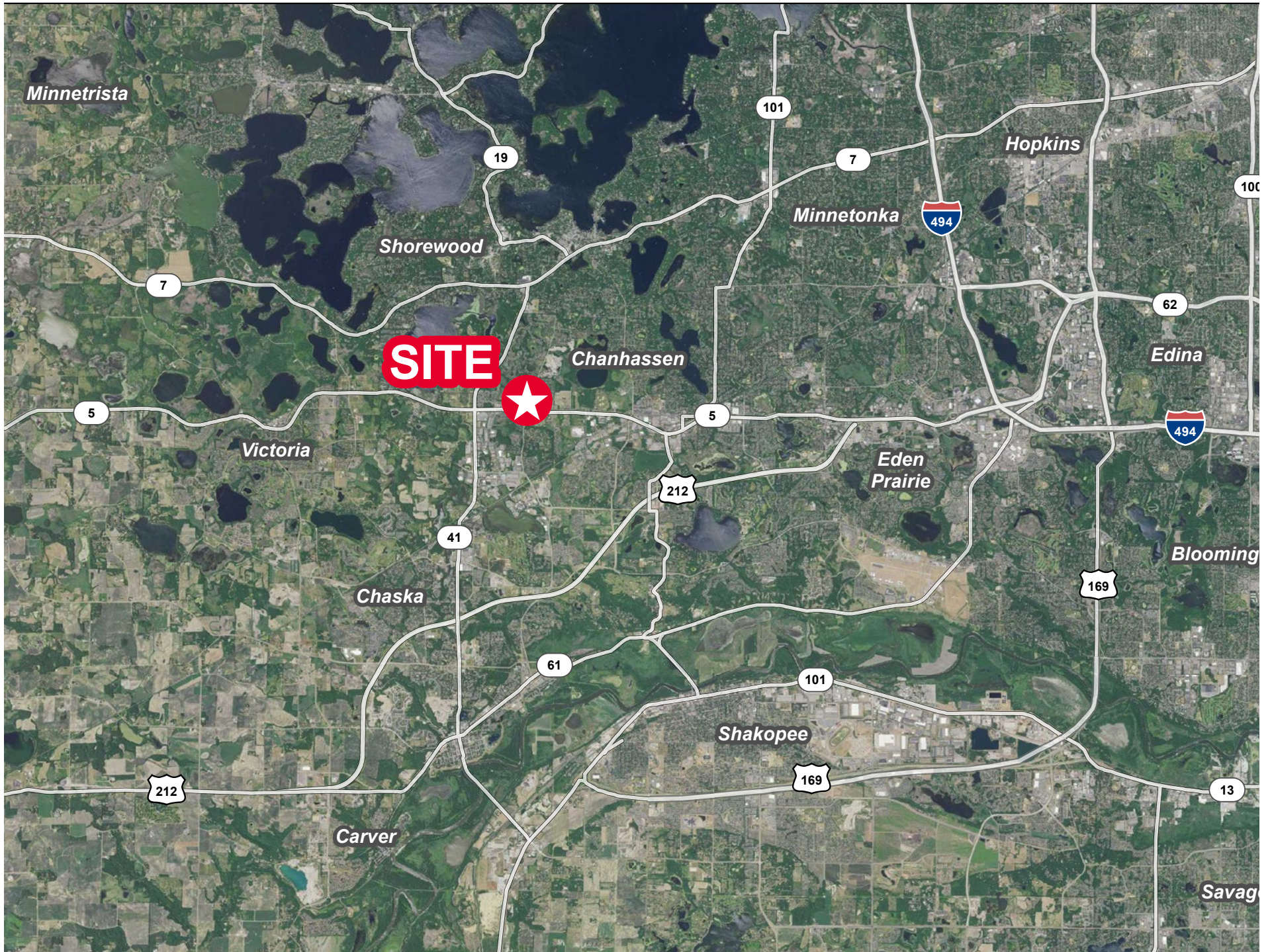
	1 Mile	3 Miles	5 Miles
Population	4,242	35,442	102,562
Households	1,694	14,029	39,123
Average HH Income	\$220,868	\$191,457	\$198,543
Daytime Population	3,902	26,943	41,607

PROPERTY AERIAL

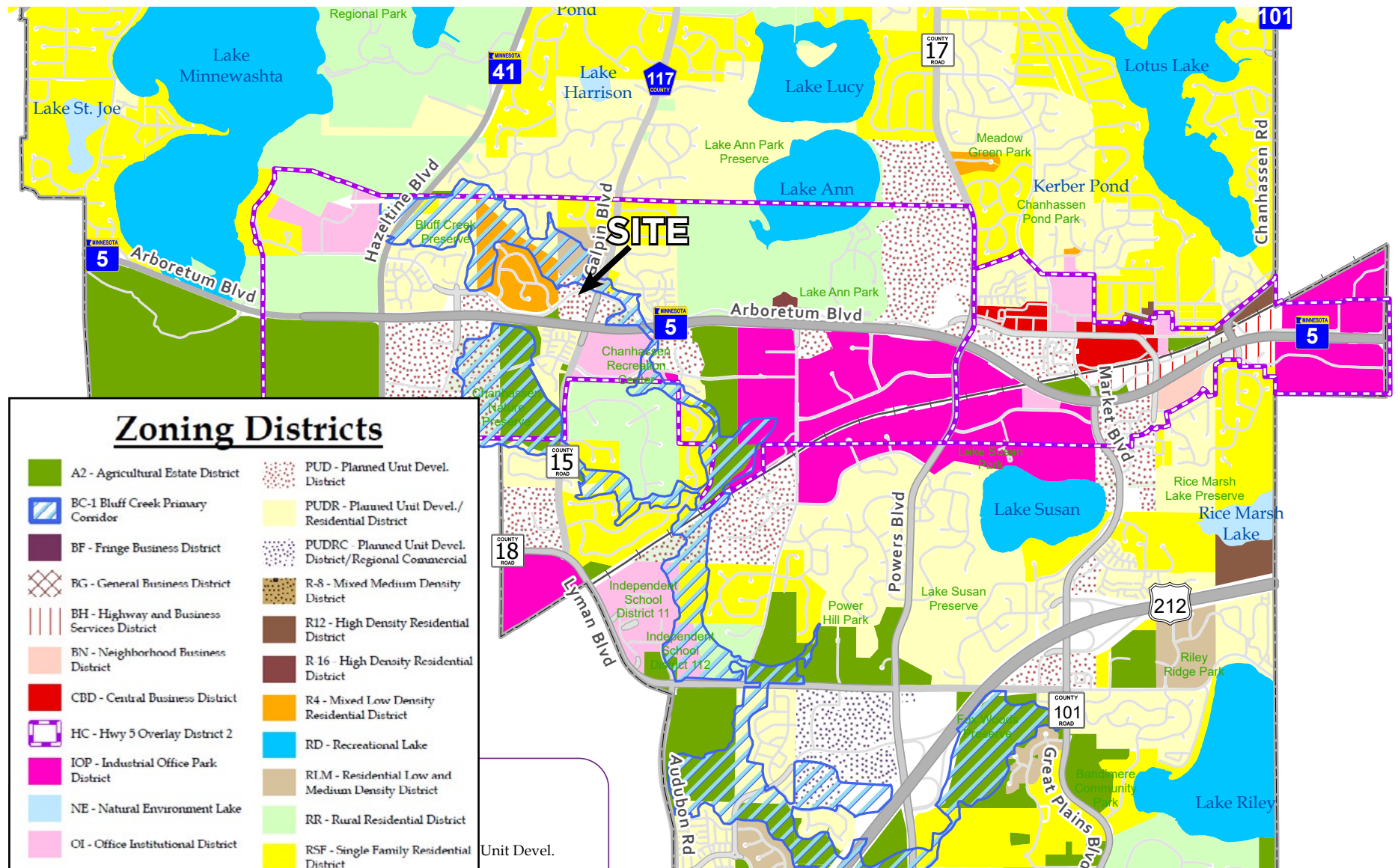


PROPERTY AERIAL





ZONING MAP





©2025 Cushman & Wakefield. All rights reserved. The information contained in this communication is strictly confidential. This information has been obtained from sources believed to be reliable but has not been verified. NO WARRANTY OR REPRESENTATION, EXPRESS OR IMPLIED, IS MADE AS TO THE CONDITION OF THE PROPERTY (OR PROPERTIES) REFERENCED HEREIN OR AS TO THE ACCURACY OR COMPLETENESS OF THE INFORMATION CONTAINED HEREIN, AND SAME IS SUBMITTED SUBJECT TO ERRORS, OMISSIONS, CHANGE OF PRICE, RENTAL OR OTHER CONDITIONS, WITHDRAWAL WITHOUT NOTICE, AND TO ANY SPECIAL LISTING CONDITIONS IMPOSED BY THE PROPERTY OWNER(S). ANY PROJECTIONS, OPINIONS OR ESTIMATES ARE SUBJECT TO UNCERTAINTY AND DO NOT SIGNIFY CURRENT OR FUTURE PROPERTY PERFORMANCE.